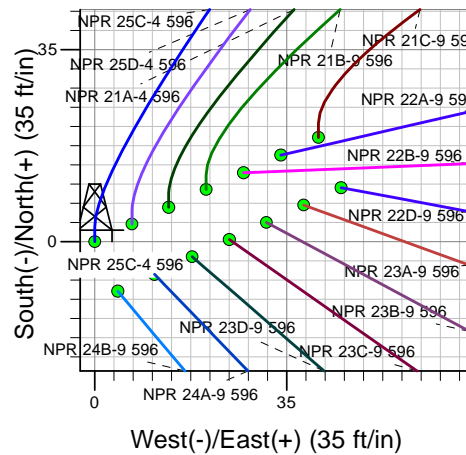
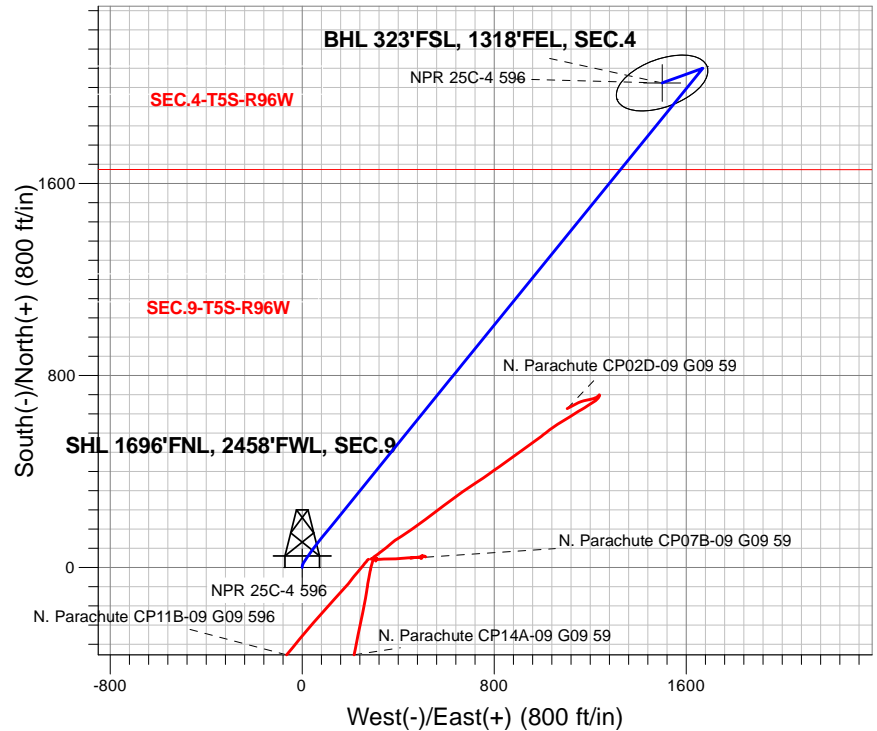
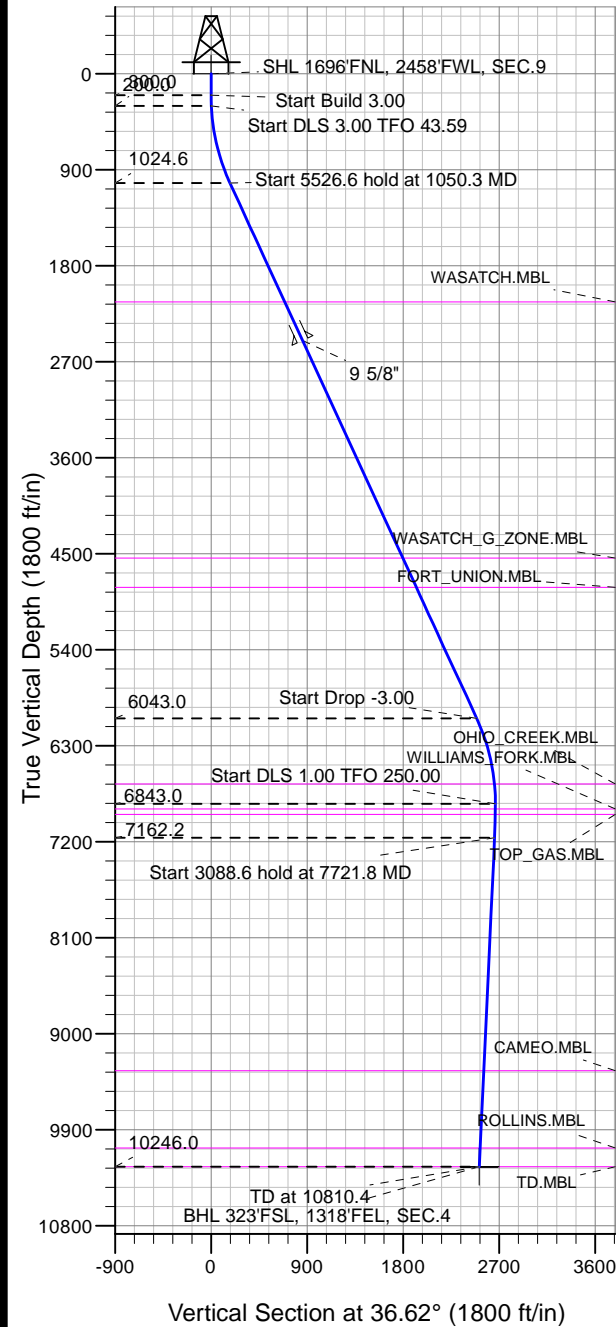


Caerus Oil and Gas LLC



NPR 25C-4 596
 Plan #1 (1-15-18)
 11:43, January 18 2018



Azimuths to True North
 Magnetic North: 9.63°
 Magnetic Field
 Strength: 51503.2snT
 Dip Angle: 65.85°
 Date: 1/18/2018
 Model: HDGM

DESIGN TARGET DETAILS

Name	TVD	+N/-S	+E/-W	Latitude	Longitude	Shape
SHL 1696'FNL, 2458'FWL, SEC.9	1.0	0.0	0.0	39.632183	-108.174169	Point
BHL 323'FSL, 1318'FEL, SEC.4	10246.0	2018.1	1500.0	39.637723	-108.168844	Ellipse (Radii: L200.0 W100.0)

SECTION DETAILS

Sec	MD	Inc	Azi	TVD	+N/-S	+E/-W	Dleg	TFace	Vsect	Target
1	0.0	0.00	0.00	0.0	0.0	0.0	0.00	0.00	0.0	
2	200.0	0.00	0.00	200.0	0.0	0.0	0.00	0.00	0.0	
3	300.0	3.00	0.00	300.0	2.6	0.0	3.00	0.00	2.1	
4	1050.3	24.77	39.07	1024.6	146.1	100.3	3.00	43.59	177.1	
5	6576.9	24.77	39.07	6043.0	1943.6	1559.3	0.00	0.00	2490.1	
6	7402.4	0.00	0.00	6843.0	2080.0	1670.0	3.00	180.00	2665.6	
7	7721.8	3.19	250.00	7162.2	2077.0	1661.6	1.00	250.00	2658.2	
8	10810.4	3.19	250.00	10246.0	2018.1	1500.0	0.00	0.00	2514.5	BHL 323'FSL, 1318'FEL, SEC.4



Caerus Oil and Gas LLC

SEC.9-T5S-R96W

NPR G09 596 Pad Sec.9-T5S-R96W

NPR 25C-4 596

Wellbore #1

Plan: Plan #1 (1-15-18)

Standard Planning Report

18 January, 2018

Database:	US_EDM	Local Co-ordinate Reference:	Well NPR 25C-4 596
Company:	Caerus Oil and Gas LLC	TVD Reference:	WELL @ 7670.0ft (Original Well Elev)
Project:	SEC.9-T5S-R96W	MD Reference:	WELL @ 7670.0ft (Original Well Elev)
Site:	NPR G09 596 Pad Sec.9-T5S-R96W	North Reference:	True
Well:	NPR 25C-4 596	Survey Calculation Method:	Minimum Curvature
Wellbore:	Wellbore #1		
Design:	Plan #1 (1-15-18)		

Project	SEC.9-T5S-R96W, Garfield County, CO		
Map System:	Universal Transverse Mercator (US Survey Feet)	System Datum:	Mean Sea Level
Geo Datum:	NAD 1927 - Western US		Using Well Reference Point
Map Zone:	Zone 12N (114 W to 108 W)		Using geodetic scale factor

Site	NPR G09 596 Pad Sec.9-T5S-R96W		
Site Position:		Northing:	14,404,590.33 usft
From:	Lat/Long	Easting:	2,436,015.01 usft
Position Uncertainty:	0.0 ft	Slot Radius:	13-3/16 "
		Latitude:	39.632067
		Longitude:	-108.174492
		Grid Convergence:	1.80 °

Well	NPR 25C-4 596		
Well Position	+N/-S	42.1 ft	Northing:
	+E/-W	90.8 ft	Easting:
Position Uncertainty	0.0 ft	Wellhead Elevation:	0.0 ft
		Latitude:	39.632183
		Longitude:	-108.174170
		Ground Level:	7,640.0 ft

Wellbore	Wellbore #1				
Magnetics	Model Name	Sample Date	Declination (°)	Dip Angle (°)	Field Strength (nT)
	HDGM	1/18/2018	9.63	65.85	51,503

Design	Plan #1 (1-15-18)			
Audit Notes:				
Version:	Phase:	PROTOTYPE	Tie On Depth:	0.0
Vertical Section:	Depth From (TVD)	+N/-S	+E/-W	Direction
	(ft)	(ft)	(ft)	(°)
	0.0	0.0	0.0	36.62

Plan Sections										
Measured Depth (ft)	Inclination (°)	Azimuth (°)	Vertical Depth (ft)	+N/-S (ft)	+E/-W (ft)	Dogleg Rate (°/100usft)	Build Rate (°/100usft)	Turn Rate (°/100usft)	TFO (°)	Target
0.0	0.00	0.00	0.0	0.0	0.0	0.00	0.00	0.00	0.00	
200.0	0.00	0.00	200.0	0.0	0.0	0.00	0.00	0.00	0.00	
300.0	3.00	0.00	300.0	2.6	0.0	3.00	3.00	0.00	0.00	
1,050.3	24.77	39.07	1,024.6	146.1	100.3	3.00	2.90	5.21	43.59	
6,576.9	24.77	39.07	6,043.0	1,943.6	1,559.3	0.00	0.00	0.00	0.00	
7,402.4	0.00	0.00	6,843.0	2,080.0	1,670.0	3.00	-3.00	0.00	180.00	
7,721.8	3.19	250.00	7,162.2	2,077.0	1,661.6	1.00	1.00	-34.45	250.00	
10,810.4	3.19	250.00	10,246.0	2,018.1	1,500.0	0.00	0.00	0.00	0.00	BHL 323'FSL, 1318'FI

Database:	US_EDM	Local Co-ordinate Reference:	Well NPR 25C-4 596
Company:	Caerus Oil and Gas LLC	TVD Reference:	WELL @ 7670.0ft (Original Well Elev)
Project:	SEC.9-T5S-R96W	MD Reference:	WELL @ 7670.0ft (Original Well Elev)
Site:	NPR G09 596 Pad Sec.9-T5S-R96W	North Reference:	True
Well:	NPR 25C-4 596	Survey Calculation Method:	Minimum Curvature
Wellbore:	Wellbore #1		
Design:	Plan #1 (1-15-18)		

Planned Survey									
Measured Depth (ft)	Inclination (°)	Azimuth (°)	Vertical Depth (ft)	+N/-S (ft)	+E/-W (ft)	Vertical Section (ft)	Dogleg Rate (°/100usft)	Build Rate (°/100usft)	Turn Rate (°/100usft)
0.0	0.00	0.00	0.0	0.0	0.0	0.0	0.00	0.00	0.00
1.0	0.00	0.00	1.0	0.0	0.0	0.0	0.00	0.00	0.00
SHL 1696'FNL, 2458'FWL, SEC.9									
100.0	0.00	0.00	100.0	0.0	0.0	0.0	0.00	0.00	0.00
200.0	0.00	0.00	200.0	0.0	0.0	0.0	0.00	0.00	0.00
300.0	3.00	0.00	300.0	2.6	0.0	2.1	3.00	3.00	0.00
400.0	5.57	21.82	399.7	9.7	1.8	8.9	3.00	2.57	21.82
500.0	8.43	29.45	498.9	20.6	7.2	20.9	3.00	2.86	7.63
600.0	11.36	33.20	597.4	35.3	16.2	38.0	3.00	2.93	3.75
700.0	14.32	35.42	694.9	53.6	28.8	60.2	3.00	2.96	2.22
800.0	17.29	36.89	791.1	75.6	44.9	87.4	3.00	2.97	1.47
900.0	20.27	37.94	885.8	101.1	64.5	119.6	3.00	2.98	1.05
1,000.0	23.26	38.74	978.6	130.2	87.5	156.7	3.00	2.99	0.79
1,050.3	24.77	39.07	1,024.6	146.1	100.3	177.1	3.00	2.99	0.65
1,100.0	24.77	39.07	1,069.7	162.3	113.4	197.9	0.00	0.00	0.00
1,200.0	24.77	39.07	1,160.5	194.8	139.8	239.8	0.00	0.00	0.00
1,300.0	24.77	39.07	1,251.3	227.3	166.2	281.6	0.00	0.00	0.00
1,400.0	24.77	39.07	1,342.1	259.8	192.6	323.5	0.00	0.00	0.00
1,500.0	24.77	39.07	1,432.9	292.4	219.0	365.3	0.00	0.00	0.00
1,600.0	24.77	39.07	1,523.7	324.9	245.4	407.2	0.00	0.00	0.00
1,700.0	24.77	39.07	1,614.5	357.4	271.8	449.0	0.00	0.00	0.00
1,800.0	24.77	39.07	1,705.3	389.9	298.2	490.9	0.00	0.00	0.00
1,900.0	24.77	39.07	1,796.1	422.5	324.6	532.7	0.00	0.00	0.00
2,000.0	24.77	39.07	1,886.9	455.0	351.0	574.6	0.00	0.00	0.00
2,100.0	24.77	39.07	1,977.7	487.5	377.4	616.4	0.00	0.00	0.00
2,200.0	24.77	39.07	2,068.6	520.0	403.8	658.3	0.00	0.00	0.00
2,277.6	24.77	39.07	2,139.0	545.3	424.3	690.8	0.00	0.00	0.00
WASATCH.MBL									
2,300.0	24.77	39.07	2,159.4	552.6	430.2	700.1	0.00	0.00	0.00
2,400.0	24.77	39.07	2,250.2	585.1	456.6	742.0	0.00	0.00	0.00
2,500.0	24.77	39.07	2,341.0	617.6	483.0	783.8	0.00	0.00	0.00
2,600.0	24.77	39.07	2,431.8	650.1	509.4	825.7	0.00	0.00	0.00
2,675.1	24.77	39.07	2,500.0	674.6	529.3	857.1	0.00	0.00	0.00
9 5/8"									
2,700.0	24.77	39.07	2,522.6	682.7	535.8	867.5	0.00	0.00	0.00
2,800.0	24.77	39.07	2,613.4	715.2	562.2	909.4	0.00	0.00	0.00
2,900.0	24.77	39.07	2,704.2	747.7	588.6	951.2	0.00	0.00	0.00
3,000.0	24.77	39.07	2,795.0	780.2	615.0	993.1	0.00	0.00	0.00
3,100.0	24.77	39.07	2,885.8	812.8	641.4	1,034.9	0.00	0.00	0.00
3,200.0	24.77	39.07	2,976.6	845.3	667.8	1,076.8	0.00	0.00	0.00
3,300.0	24.77	39.07	3,067.4	877.8	694.2	1,118.7	0.00	0.00	0.00
3,400.0	24.77	39.07	3,158.2	910.3	720.6	1,160.5	0.00	0.00	0.00
3,500.0	24.77	39.07	3,249.0	942.9	747.0	1,202.4	0.00	0.00	0.00
3,600.0	24.77	39.07	3,339.8	975.4	773.4	1,244.2	0.00	0.00	0.00
3,700.0	24.77	39.07	3,430.6	1,007.9	799.8	1,286.1	0.00	0.00	0.00
3,800.0	24.77	39.07	3,521.4	1,040.4	826.2	1,327.9	0.00	0.00	0.00
3,900.0	24.77	39.07	3,612.2	1,073.0	852.6	1,369.8	0.00	0.00	0.00
4,000.0	24.77	39.07	3,703.0	1,105.5	879.0	1,411.6	0.00	0.00	0.00
4,100.0	24.77	39.07	3,793.8	1,138.0	905.4	1,453.5	0.00	0.00	0.00
4,200.0	24.77	39.07	3,884.6	1,170.5	931.8	1,495.3	0.00	0.00	0.00
4,300.0	24.77	39.07	3,975.4	1,203.1	958.2	1,537.2	0.00	0.00	0.00
4,400.0	24.77	39.07	4,066.2	1,235.6	984.6	1,579.0	0.00	0.00	0.00
4,500.0	24.77	39.07	4,157.0	1,268.1	1,011.0	1,620.9	0.00	0.00	0.00

Database:	US_EDM	Local Co-ordinate Reference:	Well NPR 25C-4 596
Company:	Caerus Oil and Gas LLC	TVD Reference:	WELL @ 7670.0ft (Original Well Elev)
Project:	SEC.9-T5S-R96W	MD Reference:	WELL @ 7670.0ft (Original Well Elev)
Site:	NPR G09 596 Pad Sec.9-T5S-R96W	North Reference:	True
Well:	NPR 25C-4 596	Survey Calculation Method:	Minimum Curvature
Wellbore:	Wellbore #1		
Design:	Plan #1 (1-15-18)		

Planned Survey									
Measured Depth (ft)	Inclination (°)	Azimuth (°)	Vertical Depth (ft)	+N/-S (ft)	+E/-W (ft)	Vertical Section (ft)	Dogleg Rate (°/100usft)	Build Rate (°/100usft)	Turn Rate (°/100usft)
4,600.0	24.77	39.07	4,247.8	1,300.6	1,037.4	1,662.7	0.00	0.00	0.00
4,700.0	24.77	39.07	4,338.6	1,333.2	1,063.8	1,704.6	0.00	0.00	0.00
4,800.0	24.77	39.07	4,429.4	1,365.7	1,090.2	1,746.4	0.00	0.00	0.00
4,900.0	24.77	39.07	4,520.2	1,398.2	1,116.6	1,788.3	0.00	0.00	0.00
4,920.7	24.77	39.07	4,539.0	1,404.9	1,122.1	1,796.9	0.00	0.00	0.00
WASATCH_G_ZONE.MBL									
5,000.0	24.77	39.07	4,611.0	1,430.7	1,143.0	1,830.1	0.00	0.00	0.00
5,100.0	24.77	39.07	4,701.8	1,463.3	1,169.4	1,872.0	0.00	0.00	0.00
5,200.0	24.77	39.07	4,792.7	1,495.8	1,195.8	1,913.8	0.00	0.00	0.00
5,225.7	24.77	39.07	4,816.0	1,504.1	1,202.6	1,924.6	0.00	0.00	0.00
FORT_UNION.MBL									
5,300.0	24.77	39.07	4,883.5	1,528.3	1,222.2	1,955.7	0.00	0.00	0.00
5,400.0	24.77	39.07	4,974.3	1,560.8	1,248.6	1,997.5	0.00	0.00	0.00
5,500.0	24.77	39.07	5,065.1	1,593.4	1,275.0	2,039.4	0.00	0.00	0.00
5,600.0	24.77	39.07	5,155.9	1,625.9	1,301.4	2,081.2	0.00	0.00	0.00
5,700.0	24.77	39.07	5,246.7	1,658.4	1,327.8	2,123.1	0.00	0.00	0.00
5,800.0	24.77	39.07	5,337.5	1,690.9	1,354.2	2,164.9	0.00	0.00	0.00
5,900.0	24.77	39.07	5,428.3	1,723.5	1,380.6	2,206.8	0.00	0.00	0.00
6,000.0	24.77	39.07	5,519.1	1,756.0	1,407.0	2,248.6	0.00	0.00	0.00
6,100.0	24.77	39.07	5,609.9	1,788.5	1,433.4	2,290.5	0.00	0.00	0.00
6,200.0	24.77	39.07	5,700.7	1,821.0	1,459.8	2,332.4	0.00	0.00	0.00
6,300.0	24.77	39.07	5,791.5	1,853.6	1,486.2	2,374.2	0.00	0.00	0.00
6,400.0	24.77	39.07	5,882.3	1,886.1	1,512.6	2,416.1	0.00	0.00	0.00
6,500.0	24.77	39.07	5,973.1	1,918.6	1,539.0	2,457.9	0.00	0.00	0.00
6,576.9	24.77	39.07	6,043.0	1,943.6	1,559.3	2,490.1	0.00	0.00	0.00
6,600.0	24.07	39.07	6,064.0	1,951.0	1,565.3	2,499.6	3.00	-3.00	0.00
6,700.0	21.07	39.07	6,156.3	1,980.8	1,589.5	2,538.0	3.00	-3.00	0.00
6,800.0	18.07	39.07	6,250.5	2,006.8	1,610.6	2,571.4	3.00	-3.00	0.00
6,900.0	15.07	39.07	6,346.3	2,029.0	1,628.6	2,599.9	3.00	-3.00	0.00
7,000.0	12.07	39.07	6,443.5	2,047.2	1,643.4	2,623.4	3.00	-3.00	0.00
7,100.0	9.07	39.07	6,541.8	2,061.4	1,654.9	2,641.7	3.00	-3.00	0.00
7,200.0	6.07	39.07	6,640.9	2,071.7	1,663.2	2,654.9	3.00	-3.00	0.00
7,218.2	5.53	39.07	6,659.0	2,073.1	1,664.4	2,656.7	3.00	-3.00	0.00
OHIO_CREEK.MBL									
7,300.0	3.07	39.07	6,740.6	2,077.9	1,668.3	2,662.8	3.00	-3.00	0.00
7,400.0	0.07	39.07	6,840.6	2,080.0	1,670.0	2,665.6	3.00	-3.00	0.00
7,402.4	0.00	0.00	6,843.0	2,080.0	1,670.0	2,665.6	3.00	-3.00	0.00
7,452.4	0.50	250.00	6,893.0	2,079.9	1,669.8	2,665.4	1.00	1.00	0.00
WILLIAMS_FORK.MBL									
7,500.0	0.98	250.00	6,940.5	2,079.7	1,669.2	2,664.9	1.00	1.00	0.00
7,502.5	1.00	250.00	6,943.0	2,079.7	1,669.2	2,664.9	1.00	1.00	0.00
TOP_GAS.MBL									
7,600.0	1.98	250.00	7,040.5	2,078.8	1,666.8	2,662.7	1.00	1.00	0.00
7,700.0	2.98	250.00	7,140.4	2,077.4	1,662.7	2,659.1	1.00	1.00	0.00
7,721.8	3.19	250.00	7,162.2	2,077.0	1,661.6	2,658.2	1.00	1.00	0.00
7,800.0	3.19	250.00	7,240.3	2,075.5	1,657.5	2,654.5	0.00	0.00	0.00
7,900.0	3.19	250.00	7,340.1	2,073.6	1,652.3	2,649.9	0.00	0.00	0.00
8,000.0	3.19	250.00	7,440.0	2,071.7	1,647.1	2,645.2	0.00	0.00	0.00
8,100.0	3.19	250.00	7,539.8	2,069.8	1,641.8	2,640.6	0.00	0.00	0.00
8,200.0	3.19	250.00	7,639.6	2,067.8	1,636.6	2,635.9	0.00	0.00	0.00
8,300.0	3.19	250.00	7,739.5	2,065.9	1,631.4	2,631.3	0.00	0.00	0.00
8,400.0	3.19	250.00	7,839.3	2,064.0	1,626.1	2,626.6	0.00	0.00	0.00
8,500.0	3.19	250.00	7,939.2	2,062.1	1,620.9	2,622.0	0.00	0.00	0.00
8,600.0	3.19	250.00	8,039.0	2,060.2	1,615.7	2,617.3	0.00	0.00	0.00

Database:	US_EDM	Local Co-ordinate Reference:	Well NPR 25C-4 596
Company:	Caerus Oil and Gas LLC	TVD Reference:	WELL @ 7670.0ft (Original Well Elev)
Project:	SEC.9-T5S-R96W	MD Reference:	WELL @ 7670.0ft (Original Well Elev)
Site:	NPR G09 596 Pad Sec.9-T5S-R96W	North Reference:	True
Well:	NPR 25C-4 596	Survey Calculation Method:	Minimum Curvature
Wellbore:	Wellbore #1		
Design:	Plan #1 (1-15-18)		

Planned Survey										
Measured Depth (ft)	Inclination (°)	Azimuth (°)	Vertical Depth (ft)	+N/-S (ft)	+E/-W (ft)	Vertical Section (ft)	Dogleg Rate (°/100usft)	Build Rate (°/100usft)	Turn Rate (°/100usft)	
8,700.0	3.19	250.00	8,138.9	2,058.3	1,610.4	2,612.7	0.00	0.00	0.00	
8,800.0	3.19	250.00	8,238.7	2,056.4	1,605.2	2,608.0	0.00	0.00	0.00	
8,900.0	3.19	250.00	8,338.6	2,054.5	1,600.0	2,603.4	0.00	0.00	0.00	
9,000.0	3.19	250.00	8,438.4	2,052.6	1,594.7	2,598.7	0.00	0.00	0.00	
9,100.0	3.19	250.00	8,538.2	2,050.7	1,589.5	2,594.1	0.00	0.00	0.00	
9,200.0	3.19	250.00	8,638.1	2,048.8	1,584.3	2,589.4	0.00	0.00	0.00	
9,300.0	3.19	250.00	8,737.9	2,046.9	1,579.0	2,584.7	0.00	0.00	0.00	
9,400.0	3.19	250.00	8,837.8	2,045.0	1,573.8	2,580.1	0.00	0.00	0.00	
9,500.0	3.19	250.00	8,937.6	2,043.1	1,568.6	2,575.4	0.00	0.00	0.00	
9,600.0	3.19	250.00	9,037.5	2,041.2	1,563.3	2,570.8	0.00	0.00	0.00	
9,700.0	3.19	250.00	9,137.3	2,039.3	1,558.1	2,566.1	0.00	0.00	0.00	
9,800.0	3.19	250.00	9,237.2	2,037.4	1,552.9	2,561.5	0.00	0.00	0.00	
9,900.0	3.19	250.00	9,337.0	2,035.5	1,547.6	2,556.8	0.00	0.00	0.00	
9,908.0	3.19	250.00	9,345.0	2,035.3	1,547.2	2,556.5	0.00	0.00	0.00	
CAMEO.MBL										
10,000.0	3.19	250.00	9,436.9	2,033.5	1,542.4	2,552.2	0.00	0.00	0.00	
10,100.0	3.19	250.00	9,536.7	2,031.6	1,537.2	2,547.5	0.00	0.00	0.00	
10,200.0	3.19	250.00	9,636.5	2,029.7	1,531.9	2,542.9	0.00	0.00	0.00	
10,300.0	3.19	250.00	9,736.4	2,027.8	1,526.7	2,538.2	0.00	0.00	0.00	
10,400.0	3.19	250.00	9,836.2	2,025.9	1,521.4	2,533.6	0.00	0.00	0.00	
10,500.0	3.19	250.00	9,936.1	2,024.0	1,516.2	2,528.9	0.00	0.00	0.00	
10,600.0	3.19	250.00	10,035.9	2,022.1	1,511.0	2,524.3	0.00	0.00	0.00	
10,635.1	3.19	250.00	10,071.0	2,021.4	1,509.1	2,522.6	0.00	0.00	0.00	
ROLLINS.MBL										
10,700.0	3.19	250.00	10,135.8	2,020.2	1,505.7	2,519.6	0.00	0.00	0.00	
10,800.0	3.19	250.00	10,235.6	2,018.3	1,500.5	2,515.0	0.00	0.00	0.00	
10,810.4	3.19	250.00	10,246.0	2,018.1	1,500.0	2,514.5	0.00	0.00	0.00	
TD.MBL - BHL 323°FSL, 1318°FEL, SEC.4										

Design Targets										
Target Name	Dip Angle (°)	Dip Dir. (°)	TVD (ft)	+N/-S (ft)	+E/-W (ft)	Northing (usft)	Easting (usft)	Latitude	Longitude	
- hit/miss target										
- Shape										
SHL 1696°FNL, 2458°FV	0.00	0.00	1.0	0.0	0.0	14,404,635.26	2,436,104.42	39.632183	-108.174170	
- plan hits target center										
- Point										
BHL 323°FSL, 1318°FEL	0.00	0.00	10,246.0	2,018.1	1,500.0	14,406,700.23	2,437,540.59	39.637723	-108.168844	
- plan hits target center										
- Ellipse (radii L200.0 W100.0 on 250.00 azi)										

Casing Points										
Measured Depth (ft)	Vertical Depth (ft)	Name	Casing Diameter (")	Hole Diameter (")						
2,675.1	2,500.0	9 5/8"	9-5/8	12-1/4						

Database:	US_EDM	Local Co-ordinate Reference:	Well NPR 25C-4 596
Company:	Caerus Oil and Gas LLC	TVD Reference:	WELL @ 7670.0ft (Original Well Elev)
Project:	SEC.9-T5S-R96W	MD Reference:	WELL @ 7670.0ft (Original Well Elev)
Site:	NPR G09 596 Pad Sec.9-T5S-R96W	North Reference:	True
Well:	NPR 25C-4 596	Survey Calculation Method:	Minimum Curvature
Wellbore:	Wellbore #1		
Design:	Plan #1 (1-15-18)		

Formations						
Measured Depth (ft)	Vertical Depth (ft)	Name	Lithology	Dip (°)	Dip Direction (°)	
2,277.6	2,139.0	WASATCH.MBL		0.00		
4,920.7	4,539.0	WASATCH_G_ZONE.MBL		0.00		
5,225.7	4,816.0	FORT_UNION.MBL		0.00		
7,218.2	6,659.0	OHIO_CREEK.MBL		0.00		
7,452.4	6,893.0	WILLIAMS_FORK.MBL		0.00		
7,502.5	6,943.0	TOP_GAS.MBL		0.00		
9,908.0	9,345.0	CAMEO.MBL		0.00		
10,635.1	10,071.0	ROLLINS.MBL		0.00		
10,810.4	10,246.0	TD.MBL		0.00		