



Caerus

Surface Post Job Report

Puckett 11C-26 697 05-045-23386

S:23 T:6S R:97W Garfield CO

Quote #: | Execution #:



Caerus

Attention: Mr. Steve Schmitz | (720) 880-6412 | sschmitz@caerusoilandgas.com

Caerus | 1001 17th Street, Suite 1600 | Denver, CO 80202

Dear Mr. Schmitz,

Thank you for the opportunity to provide cementing services on this well. BJ Services strives to achieve complete customer satisfaction. If you have any questions regarding the services or data provided, please contact BJ Services at any time.

Sincerely,

Zen Keith
Field Engineer II | (307) 757-7178 | Zen.Keith@BJServices.com

Field Office 28730 US-6, Rifle, CO 81650
Phone: (970) 632-2412

Sales Office 999 18th St. Suite 1200 Denver, CO 80202
Phone: (281) 408-2361

Cementing Treatment



Start Date	12/3/2017	Well	Puckett 11C-26 697
End Date	12/4/2017	County	GARFIELD
Client	CAERUS OPERATING, LLC	State/Province	CO
Client Field Rep	DOUG MCADAM	API	05-045-23386
Service Supervisor		Formation	
Field Ticket No.	Surface	Rig	H&P 330
District	Rifle, CO	Type of Job	Surface

WELL GEOMETRY

Type	ID (in)	OD (in)	Wt. (lb/ft)	MD (ft)	Excess(%)	Grade	Thread
Previous Casing	19.50	20.00	52.73	100.00			
Open Hole	14.75			2,000.00	25.00		
Open Hole	14.75			2,550.00			
Casing	8.92	9.63	36.00	2,527.00		J-55	BUTT

Shoe Length (ft): 43

HARDWARE

Bottom Plug Used?	No	Tool Type	Float Collar
Bottom Plug Provided By		Tool Depth (ft)	2,485.00
Bottom Plug Size		Max Tubing Pressure - Rated (psi)	
Top Plug Used?	Yes	Max Tubing Pressure - Operated (psi)	
Top Plug Provided By	Non BJ	Max Casing Pressure - Rated (psi)	3,520.00
Top Plug Size	9.625	Max Casing Pressure - Operated (psi)	2,000.00
Centralizers Used	No	Pipe Movement	None
Centralizers Quantity		Job Pumped Through	No Manifold
Centralizers Type	Bow	Top Connection Thread	BUTT
Landing Collar Depth (ft)	2,485	Top Connection Size	9.625

Cementing Treatment



CIRCULATION PRIOR TO JOB

Well Circulated By	BJ	Solids Present at End of Circulation	No
Circulation Prior to Job	Yes	10 sec SGS	4.00
Circulation Time (min)	90.00	10 min SGS	4.00
Circulation Rate (bpm)	3.00	30 min SGS	5.00
Circulation Volume (bbls)	192.00	Flare Prior to/during the Cement Job	No
Lost Circulation Prior to Cement Job	No	Gas Present	No
Mud Density In (ppg)	8.34	Gas Units	0
Mud Density Out (ppg)	8.00		
PV Mud In	11		
YP Mud In	7		

TEMPERATURE

Ambient Temperature (°F)	29.00	Slurry Cement Temperature (°F)	73.00
Mix Water Temperature (°F)	70.00	Flow Line Temperature (°F)	70.00

BJ FLUID DETAILS

Fluid Type	Fluid Name	Density (ppg)	Yield (Cu Ft/sk)	H2O Req. (gals/sk)	Vol (sk)	Vol (Cu Ft)	Vol (bbls)
Spacer / Pre Flush / Flush	Sodium Silicate	10.0000					20.0000
Spacer / Pre Flush / Flush	Water	8.3300					20.0000
Spacer / Pre Flush / Flush	Water	8.3300					20.0000
Lead Slurry	S100-12	12.0000	2.5329	14.89	704	1,774.0000	315.9000
Tail Slurry	S100-12	12.5000	2.2282	12.62	162	358.0000	63.7000
Displacement Final	Displacement	8.3300				0.0000	190.2000
Top Out Slurry	S100-12	12.5000	2.2282	12.62	51	112.1100	20.0000

Fluid Type	Fluid Name	Component	Concentration	UOM
------------	------------	-----------	---------------	-----

Cementing Treatment



Spacer / Pre Flush / Flush	Sodium Silicate	SILICATE, SODIUM, A-3L	21.00	GPB
Lead Slurry	S100-12	FP-25, Dry Foam Preventer (BJS Only)	0.30	BWOB
Lead Slurry	S100-12	CEMENT EXTENDER, GYPSUM, A-10	5.00	BWOB
Lead Slurry	S100-12	IntegraSeal CELLO	0.13	LBS/SK
Lead Slurry	S100-12	CEMENT, ASTM TYPE III	100.00	PCT
Lead Slurry	S100-12	ACCELERATOR, SALT, CHLORIDE, CALCIUM, A-7P, PELLETS	2.00	LBS/SK
Lead Slurry	S100-12	CEMENT EXTENDER, SODIUM METASILICATE, A-2	2.00	LBS/SK
Tail Slurry	S100-12	CEMENT EXTENDER, GYPSUM, A-10	5.00	BWOB
Tail Slurry	S100-12	CEMENT, ASTM TYPE III	100.00	PCT
Tail Slurry	S100-12	IntegraSeal CELLO	0.13	LBS/SK
Tail Slurry	S100-12	CEMENT EXTENDER, SODIUM METASILICATE, A-2	2.00	LBS/SK
Tail Slurry	S100-12	ACCELERATOR, SALT, CHLORIDE, CALCIUM, A-7P, PELLETS	2.00	LBS/SK
Tail Slurry	S100-12	FP-25, Dry Foam Preventer (BJS Only)	0.30	BWOB
Top Out Slurry	S100-12	CEMENT EXTENDER, GYPSUM, A-10	5.00	BWOB
Top Out Slurry	S100-12	CEMENT, ASTM TYPE III	100.00	PCT
Top Out Slurry	S100-12	IntegraSeal CELLO	0.13	LBS/SK
Top Out Slurry	S100-12	CEMENT EXTENDER, SODIUM METASILICATE, A-2	2.00	LBS/SK
Top Out Slurry	S100-12	ACCELERATOR, SALT, CHLORIDE, CALCIUM, A-7P, PELLETS	2.00	LBS/SK
Top Out Slurry	S100-12	FP-25, Dry Foam Preventer (BJS Only)	0.30	BWOB

Cementing Treatment



TREATMENT SUMMARY

Time	Fluid	Rate (bpm)	Fluid Vol. (bbls)	Pipe Pressure (psi)	Annulus Pressure (psi)	Comments
12/3/2017 10:48 PM	Water	5.00	20.00	255.00		
12/3/2017 10:58 PM	Sodium Silicate	5.00	20.00	275.00		
12/3/2017 11:03 PM	Water	5.00	20.00	214.00		
12/3/2017 11:13 PM	S100-12	5.00	315.90	296.00		
12/4/2017 12:08 AM	S100-12	5.00	63.70	115.00		
12/4/2017 12:26 AM	Displacement	5.00	190.20	392.00		

	Min	Max	Avg
Pressure (psi)	0.00	990.00	280.00
Rate (bpm)	0.00	6.00	4.00

DISPLACEMENT AND END OF JOB SUMMARY

Displaced By	BJ	Amount of Cement Returned/Reversed	1.00
Calculated Displacement Volume (bbls)	192.00	Method Used to Verify Returns	Visual
Actual Displacement Volume (bbls)	192.00	Amount of Spacer to Surface	0.00
Did Float Hold?	Yes	Pressure Left on Casing (psi)	0.00
Bump Plug	Yes	Amount Bled Back After Job	1.00
Bump Plug Pressure (psi)	990.00	Total Volume Pumped (bbls)	658.00
Were Returns Planned at Surface	Yes	Top Out Cement Spotted	Yes
Cement returns During Job	None	Lost Circulation During Cement Job	Yes

Customer Name CAERUS
 Well Name PUCKETT 11C-26
 Job Type Surface

District Rifle
 Supervisor JAMES ROUSH
 Engineer GAGE PUTNAM



Seq No.	Start Date	Start Time	Event	Equipment	Density (lb/gal)	Pump Rate (bpm)	Pump Vol (bbls)	Pipe Pressure (psi)	Comments
1	12/3/2017	12:00	CREW CALLOUT						BJ CREW CALLED WITH A RTS OF 19:00 FOR PUCKETT 11C-26 SURFACE JOB
2	12/3/2017	13:45	J.M.						JOURNEY MANAGEMENT WITH BJ CREW
3	12/3/2017	14:00	LEAVE DISTRICT						LEAVE DISTRICT
4	12/3/2017	15:45	ARRIVE LOCATION						ARRIVE ON LOCATION
5	12/3/2017	16:00	STEACS						STEACS BRIEFING WITH CREW AND SPOT EQUIPMENT
6	12/3/2017	16:20	RIG UP						RIG UP EQUIPMENT
7	12/3/2017	17:30	BJ ON STANDBY						BJ ON STANDBY, RIG RUNNING CASING
8	12/3/2017	19:00	P.O.B.						PIPE ON BOTTOM
9	12/3/2017	20:30	SAFETY MEETING						SAFETY MEETING WITH BJ CREW AND RIG CREW AND COMPANY MAN
10	12/3/2017	22:40	RIG UP	Plug Container					RIG UP CEMENT HEAD TO CASING
11	12/3/2017	22:48	FILL LINES	Cement Pump Truck	8.34	2.5	5	150	BREAK CIRCULATION
12	12/3/2017	22:50	TEST LINES	Cement Pump Truck					TEST LINES 3000 PSI
13	12/3/2017	22:55	FW SPACER	Cement Pump Truck	8.34	5.5	15	255	FRESH WATER SPACER AHEAD
14	12/3/2017	22:58	SODIUM SILICATE	Cement Pump Truck	10	5.5	20	275	SODIUM SILICATE SPACER
15	12/3/2017	23:03	FW SPACER	Cement Pump Truck	8.34	5.5	20	214	FRESH WATER SPACER AHEAD
16	12/3/2017	23:10	BATCH UP	Cement Pump Truck	12				BATCH UP LEAD SLURRY @ 12.0 PPG
17	12/3/2017	23:13	LEAD SLURRY	Cement Pump Truck	12	6	317	296	LEAD SLURRY @ 12.0 PPG (704 SXS Y-2.53 MW-14.89)
18	12/3/2017	23:21	LEAD SLURRY	Cement Pump Truck	12	6		122	50 BBLS GONE LEAD SLURRY
19	12/3/2017	23:30	LEAD SLURRY	Cement Pump Truck	12	6		115	100 BBLS GONE LEAD SLURRY
20	12/3/2017	23:38	LEAD SLURRY	Cement Pump Truck	12	6		115	150 BBLS GONE LEAD SLURRY
21	12/3/2017	23:46	LEAD SLURRY	Cement Pump Truck	12	6		114	200 BBLS GONE LEAD SLURRY
22	12/3/2017	23:55	LEAD SLURRY	Cement Pump Truck	12	6		114	250 BBLS GONE LEAD SLURRY
23	12/4/2017	0:04	LEAD SLURRY	Cement Pump Truck	12	6		115	300 BBLS GONE LEAD SLURRY
24	12/4/2017	0:06	BATCH UP	Cement Pump Truck	12.5				BATCH UP TAIL SLURRY @ 12.5 PPG
25	12/4/2017	0:08	TAIL SLURRY	Cement Pump Truck	12.5	5	60	80	TAIL SLURRY @ 12.5 PPG (162 SXS Y- 2.22 MW- 12.62)
26	12/4/2017	0:16	TAIL SLURRY	Cement Pump Truck	12.5	4.5		81	50 BBLS GONE TAIL SLURRY
27	12/4/2017	0:21	SHUTDOWN	Plug Container					SHUTDOWN DROP PLUG
28	12/4/2017	0:25	TAIL SLURRY	Cement Pump Truck	12.5	5.5	4	118	PUMP 4 BBLS CEMENT ON PLUG
29	12/4/2017	0:26	DISPLACEMENT	Cement Pump Truck	8.34	6	178	80	START DISPLACEMENT
30	12/4/2017	0:35	DISPLACEMENT	Cement Pump Truck	8.34	6		85	50 BBLS GONE DISPLACEMENT
31	12/4/2017	0:44	DISPLACEMENT	Cement Pump Truck	8.34	6		252	100 BBLS GONE DISPLACEMENT
32	12/4/2017	0:31	DISPLACEMENT	Cement Pump Truck	8.34	6		392	150 BBLS GONE DISPLACEMENT
33	12/4/2017	0:56	SLOW RATE	Cement Pump Truck	8.34	2	10	200	SLOW RATE TO BUMP PLUG
34	12/4/2017	1:00	BUMP PLUG	Cement Pump Truck	8.34			990	BUMP PLUG 990 PSI
35	12/4/2017	1:05	BLEE PRESSURE	Cement Pump Truck					BLEED PRESSURE CHECK FLOATS 1 BBL BACK
36	12/4/2017	1:10	PARASITE	Cement Pump Truck	8.34	1	10	145	PUMP 10 BBLS SUGAR WATER DOWN PARASITE LINE
37	12/4/2017	1:20	WASH PUMP						START WASH UP OF PUMP TRUCK
38	12/4/2017	2:00	BJ ON STANDBY						BJ ON STANDBY, WAIT 4 HOURS TO DO TOP OUT
39	12/4/2017	8:00	RIG UP	Cement Pump Truck					RIG UP IN CELLAR TO PUMP TOP OUT JOB
40	12/4/2017	10:00	CACL WATER	Cement Pump Truck	8.5	2	3	26	CACL WATER AHEAD
41	12/4/2017	10:04	FW SPACER	Cement Pump Truck	8.34	2	2	20	FRESH WATER SPACER AHEAD
42	12/4/2017	10:05	SODIUM SILICATE	Cement Pump Truck					START INJECTING SODIUM SILICATE INTO WELLBORE
43	12/4/2017	10:10	BATCH UP	Cement Pump Truck	12.5				BATCH UP TOP OUT CEMENT
44	12/4/2017	10:13	CEMENT	Cement Pump Truck	12.5	3	20	60	TOP OUT CEMENT DOWN HOLE
45	12/4/2017	10:30	CEMENT	Cement Pump Truck	12.5	1	3	35	PUMP 3 BBLS CEMENT DOWN PREVIOUS WELL PARASITE
46	12/4/2017	10:40	SHUTDOWN						SHUTDOWN FLUSH LINES
47	12/4/2017	11:00	RIG DOWN						RIG DOWN MEETING WITH BJ CREW
48	12/4/2017	11:15	RIG DOWN						START RIG DOWN OF EQUIPMENT

Customer Name CAERUS
 Well Name PUCKETT 11C-26
 Job Type Surface

District Rifle
 Supervisor JAMES ROUSH
 Engineer GAGE PUTNAM



Seq No.	Start Date	Start Time	Event	Equipment	Density (lb/gal)	Pump Rate (bpm)	Pump Vol (bbls)	Pipe Pressure (psi)	Comments
49	12/4/2017	12:30	J.M.						JOURNEY MANAGEMENT WITH BJ CREW
50	12/4/2017	13:00	LEAVE LOCATION						LEAVE LOCATION
51									
52									
53			*MISC*						FCP-205, BUMPED PLUG- 990 PSI, CHECKED FLOATS AND HOLDING 1 BBL BACK.
54									TOPOUT- PUMPED 20 BBLS (50.5 SXS Y-2.22 12.62) 1 BBL TO SURFACE

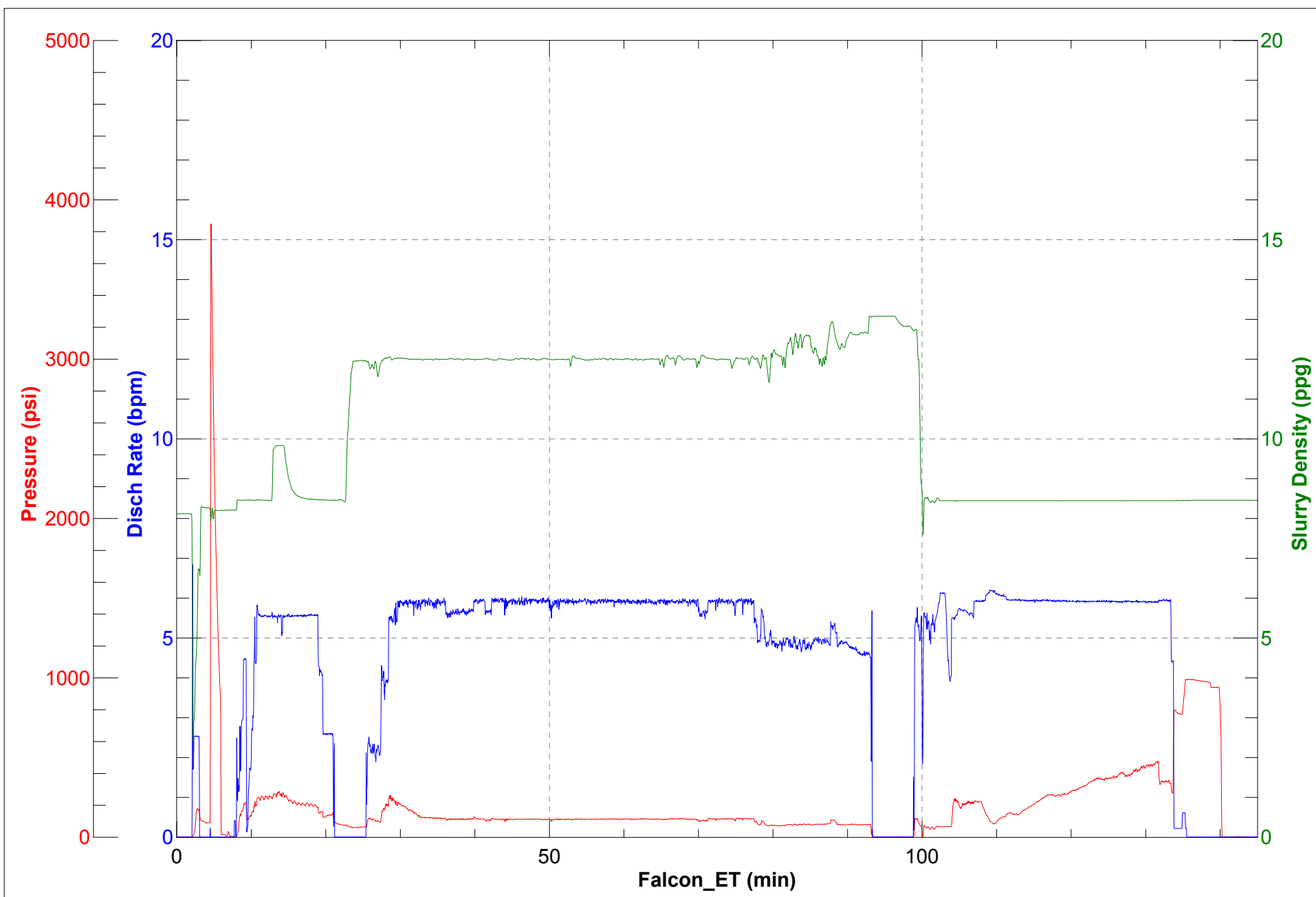


JobMaster Program Version 4.02C1

Job Number: 1283

Customer: Caerus

Well Name: Puckett 11C-26





Caerus TOPOUT Puckett 11C-26

