


|   |  |   |  |
|---|--|---|--|
| <div><div>PHOENIX<br/>TECHNOLOGY SERVICES</div><div>MD<br/>1:600<br/>Feet</div></div>   |  | <div>MWD Gamma / ROP (2")</div>   |  |
| <div>Client: Extraction Oil &amp; Gas</div>   |  |   |  |
| <div>Well Name: Mickey 1</div>  |  |   |  |
| <div>API/UWID: 05 123 43849</div>   |  |   |  |
| <div>County: Weld</div>   |  | <div>Field: Wattenburg</div>  |  |
| <div>Permit #: 1234</div>   |  |   |  |
| <div>State: Colorado</div>  |  | <div>Country: USA</div>   |  |
| <div>Longitude: 104° 54' 51.11938 W</div>   |  | <div>Personnel</div>  |  |
| <div>Latitude: 40° 30' 59.05151 N</div>   |  |   |  |
| <div>Rig Name: Patterson 346</div>  |  |   |  |
| <div>Job Number: 60550</div>  |  |   |  |
| <div>Ground Level: 4881.00 ft</div>   |  |   |  |
| <div>Kelly Bushing: 4906.00 ft</div>  |  | <div>Company Representative<br/>Jose Torres</div>                             |  |
| <div>Permanent Datum: Mean Sea Level</div>  |  | <div>Geologist</div>  |  |
| <div>Drilling Measured From: Kelly Bushing</div>  |  | <div>Directional Driller(s)<br/>Scott Sanford<br/>Colby Hansen</div>          |  |
| <div>Spud Date: -</div>   |  |   |  |
| <div>Bottom Hole Temp: 275.9 °F</div>   |  | <div>MWD Operator(s)<br/>Brian Murphy<br/>Kevin Hursh<br/>Justin Schram</div> |  |
| <div>Log Start Depth: 6000.00 ft</div>  |  |   |  |
| <div>Log End Depth: 17950.00 ft</div>   |  |   |  |
| <div>Comments: -</div>  |  | <div>Main Leg</div>   |  |
| <div>PHOENIX TECHNOLOGY SERVICES LP ("PHOENIX") DOES NOT MAKE AND EXPRESSLY DISCLAIMS ALL WARRANTIES, REPRESENTATIONS AND CONDITIONS, WITH RESPECT TO THE INFORMATION CONTAINED IN THIS DOCUMENT, WHETHER ORAL OR WRITTEN, EXPRESS OR IMPLIED OR ARISING FROM CONTRACT OR OTHERWISE, INCLUDING WITHOUT LIMITATION, THE IMPLIED WARRANTIES OF MERCHANTABILITY, ADEQUACY, ACCURACY, FITNESS FOR A PARTICULAR PURPOSE, AND NON-INFRINGEMENT. PHOENIX AND ITS AGENTS AND SUBSIDIARIES, AGENTS OF PHOENIX, AGENTS OF THE FOREGOING, PHOENIX DOES NOT WARRANT THAT THE INFORMATION (OR THE USE THEREOF) WILL BE FREE OF ALL ERRORS OR THAT IT DOES NOT INFRINGE ANY THIRD PARTY RIGHTS. ANYONE USING THE INFORMATION AGREES TO INDEMNIFY AND HOLD PHOENIX HARMLESS FROM ALL CLAIMS, ACTIONS, COSTS (INCLUDING LEGAL COSTS ON A SOLICITOR AND HIS OWN CLIENT BASIS) AND LIABILITIES ARISING FROM OR IN CONNECTION WITH THE USE OF THE INFORMATION.</div> |  |   |  |

Operational Run Summary60550

|                      | Run 1      | Run 2      |  |  |  |  |
|----------------------|------------|------------|--|--|--|--|
| Run Start Depth (ft) | 0.00       | 8447.69    |  |  |  |  |
| Run End Depth (ft)   | 8447.69    | 17950.00   |  |  |  |  |
| Run Start Date       | 11/27/2016 | 11/29/2016 |  |  |  |  |
| Run Start Time       | 4:48 PM    | 9:57 PM    |  |  |  |  |
| Run End Date         | 11/29/2016 | 12/4/2016  |  |  |  |  |
| Run End Time         | 2:30 PM    | 1:06 PM    |  |  |  |  |

Tool Information Summary60550

|                                     | Run 1    | Run 2     |  |  |  |  |
|-------------------------------------|----------|-----------|--|--|--|--|
| Gamma Probe Serial No               | EGNF0024 | EGNF-0024 |  |  |  |  |
| Probe Cal Ratio                     | 1        | 1         |  |  |  |  |
| Gamma Scale Factor                  | 2.875    | 2.875     |  |  |  |  |
| Tool Carrier ID (in)                | 4.490    | 4.490     |  |  |  |  |
| Tool Carrier OD (in)                | 6.630    | 6.630     |  |  |  |  |
|                                     |          |           |  |  |  |  |
| Survey-to-Bit (PTB) (ft)            | 64.63    | 64.59     |  |  |  |  |
| Gamma-to-Bit (GTB) (ft)             | 63.44    | 63.40     |  |  |  |  |
| Annular Pressure-to-Bit (APTb) (ft) | 0.00     | 0.00      |  |  |  |  |

Borehole Fluids and Measurements Summary60550

|                         | Run 1   | Run 2   |  |  |  |  |
|-------------------------|---------|---------|--|--|--|--|
| Hole Size (in)          | 7.88    | 7.88    |  |  |  |  |
| Casing Start Depth (ft) | 0.00    | 0.00    |  |  |  |  |
| Casing End Depth (ft)   | 1550.00 | 1550.00 |  |  |  |  |
| Casing ID Size (in)     | 0.625   | 0.625   |  |  |  |  |

|                     |                     |                     |  |  |  |  |
|---------------------|---------------------|---------------------|--|--|--|--|
| Casing Size (in)    | 9.625               | 9.625               |  |  |  |  |
| Mud Type            | Oil-Based Mud (OBM) | Oil-Based Mud (OBM) |  |  |  |  |
| Mud Weight (lb/gal) | 8.5                 | 10.0                |  |  |  |  |
| Mud Viscosity (s)   | 39                  | 39                  |  |  |  |  |
| Weighting Agent     | Barite              | Barite              |  |  |  |  |
| Mud KCL Content (%) | 0.000               | 0.000               |  |  |  |  |

Log

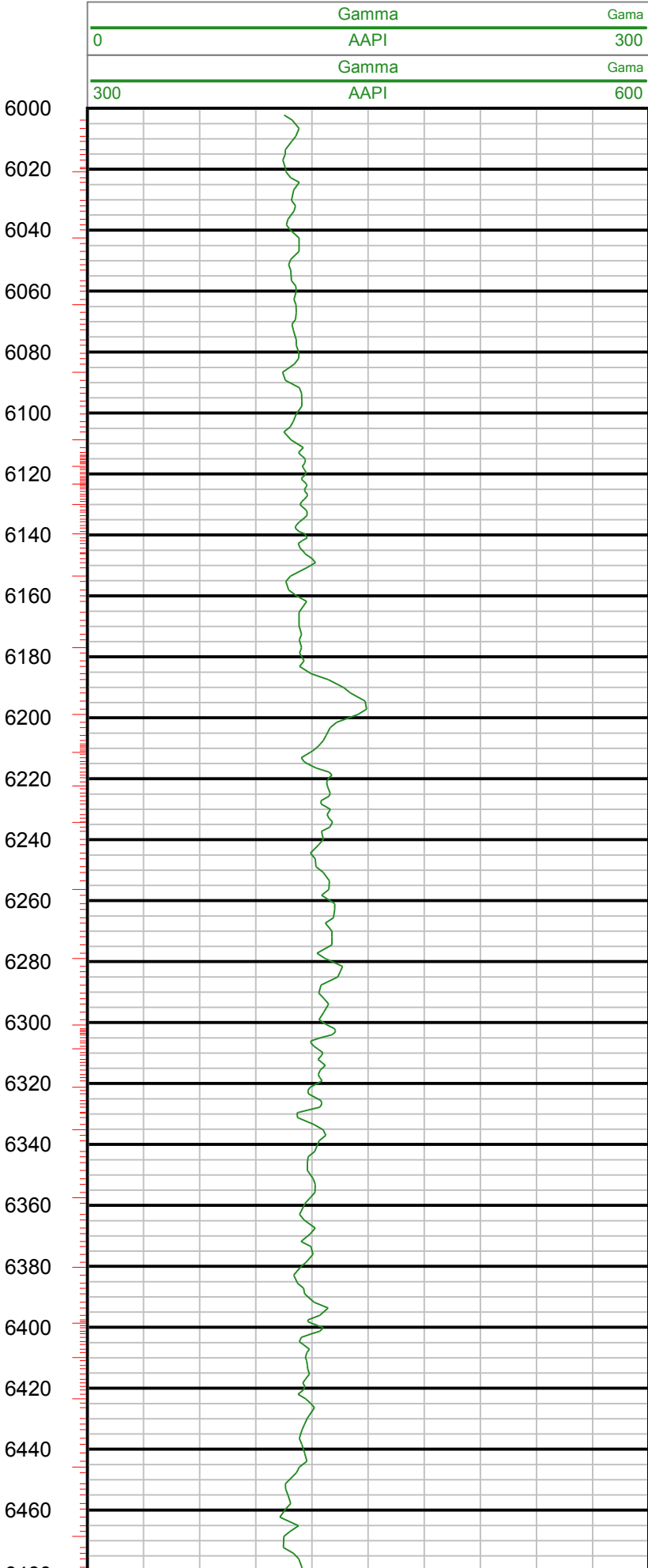
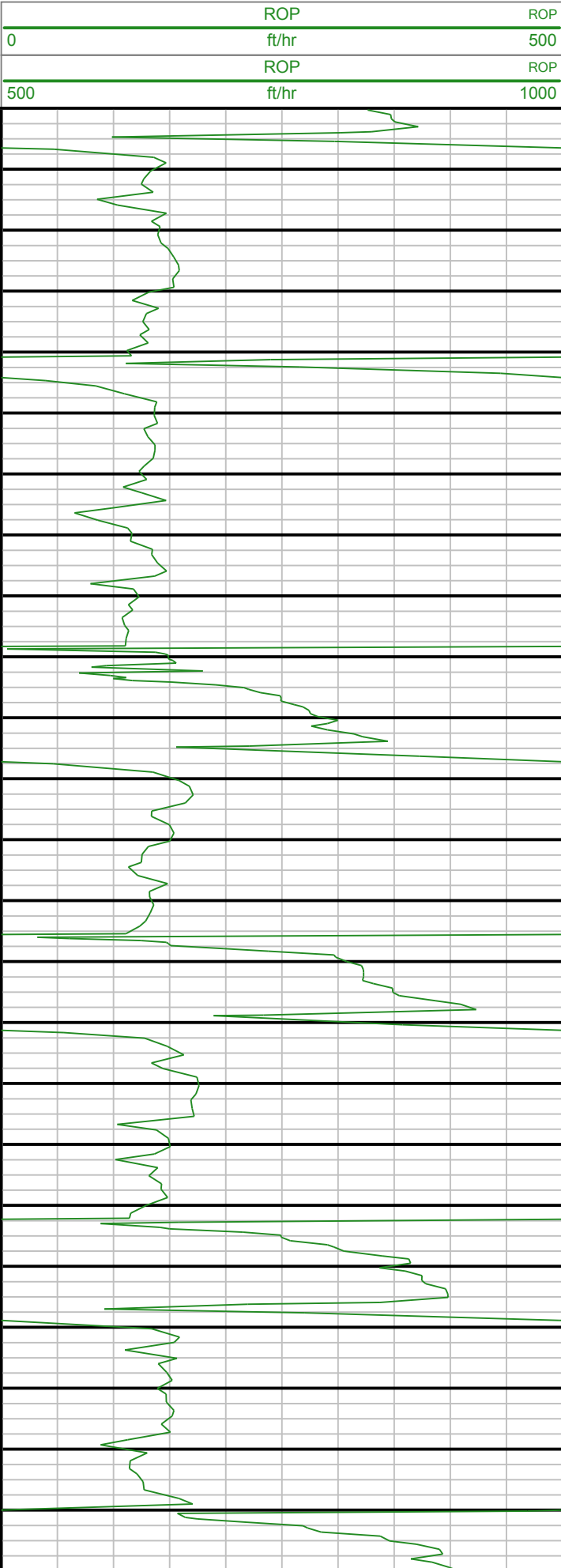
1:600

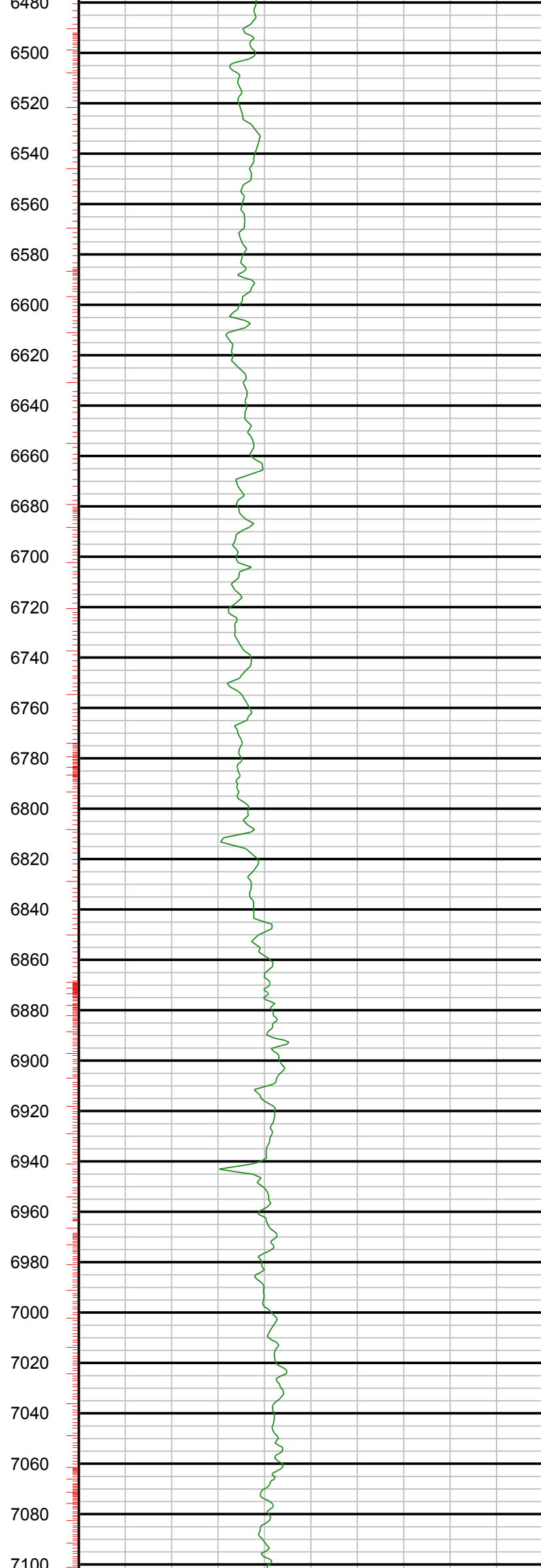
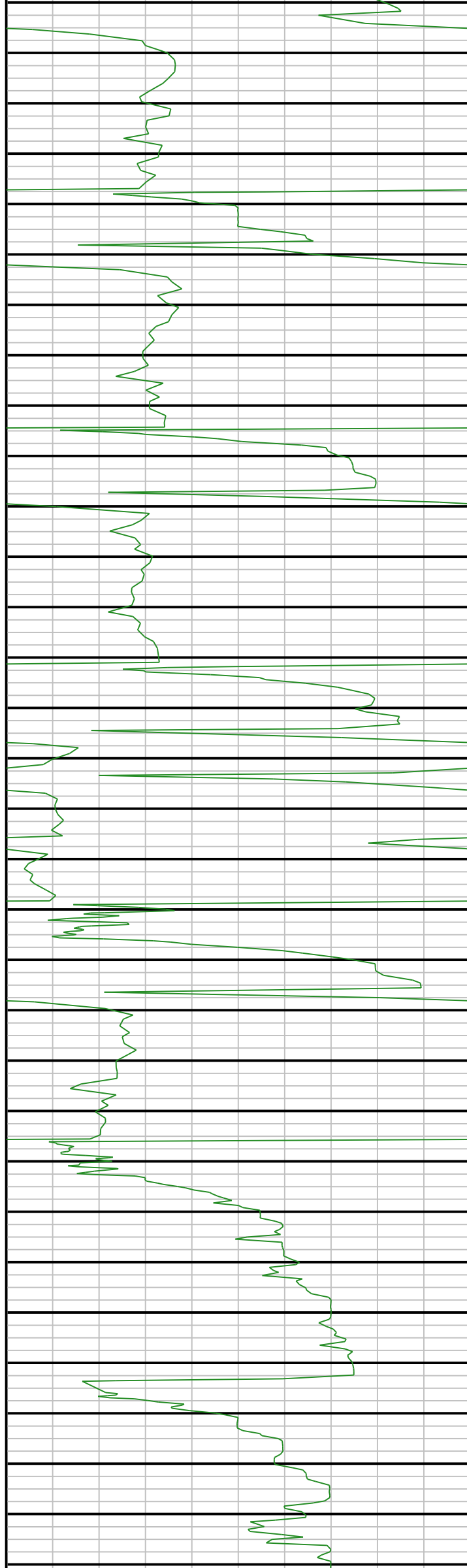
Index Scale: 1:600

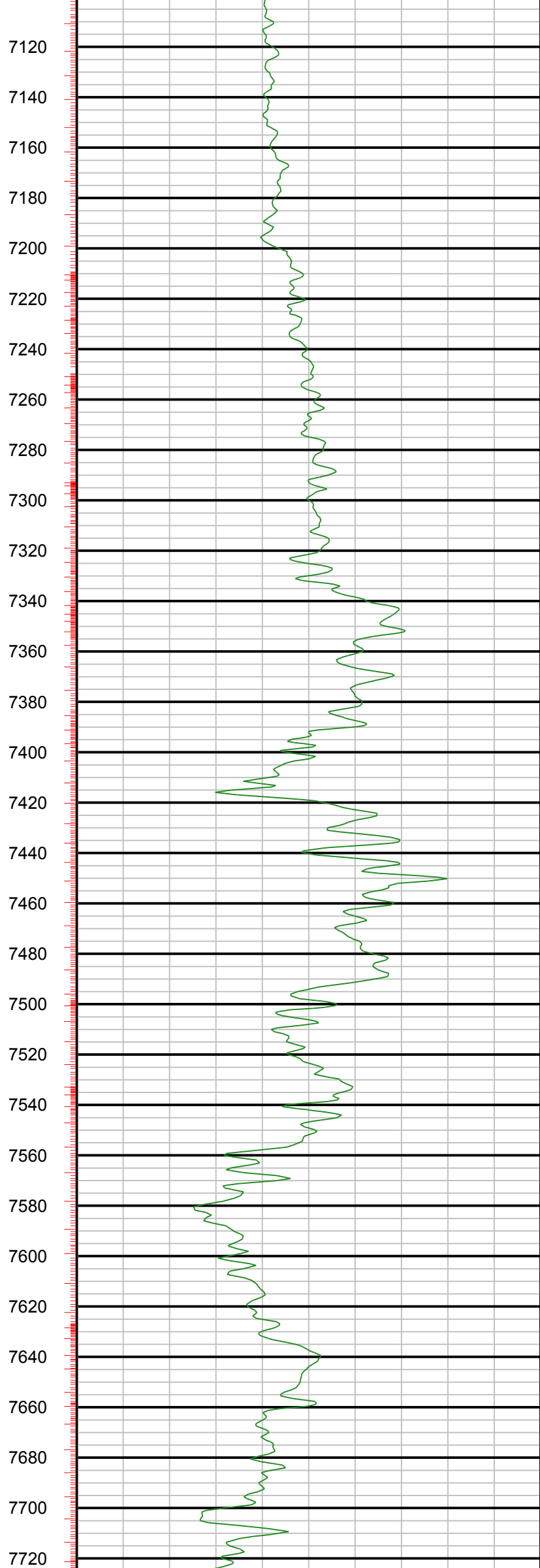
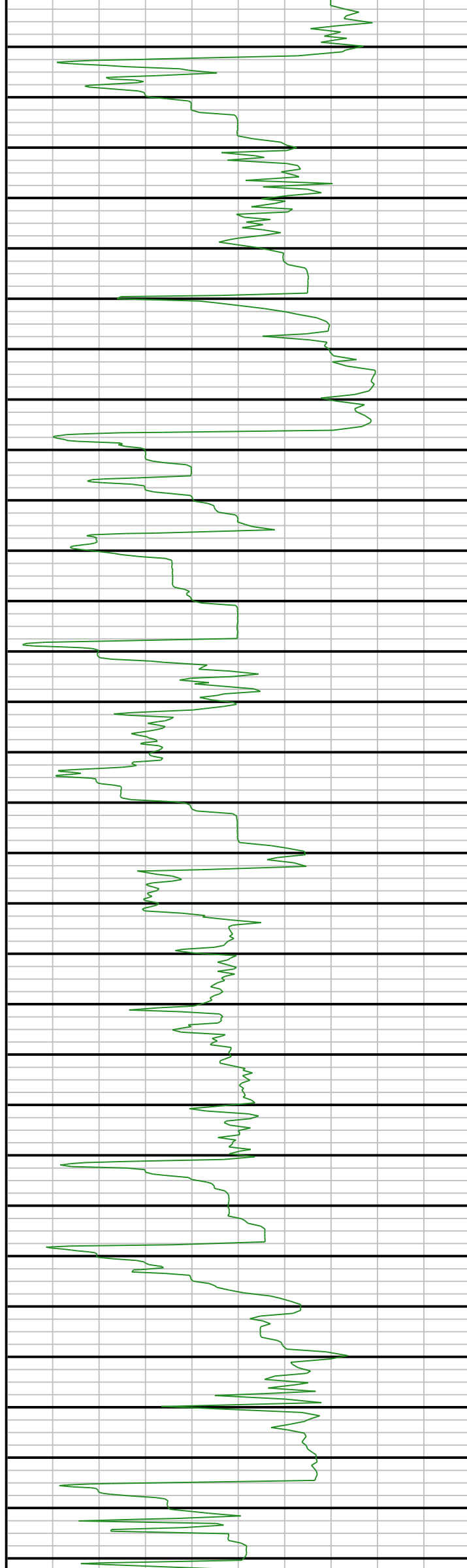
Index Unit: Feet

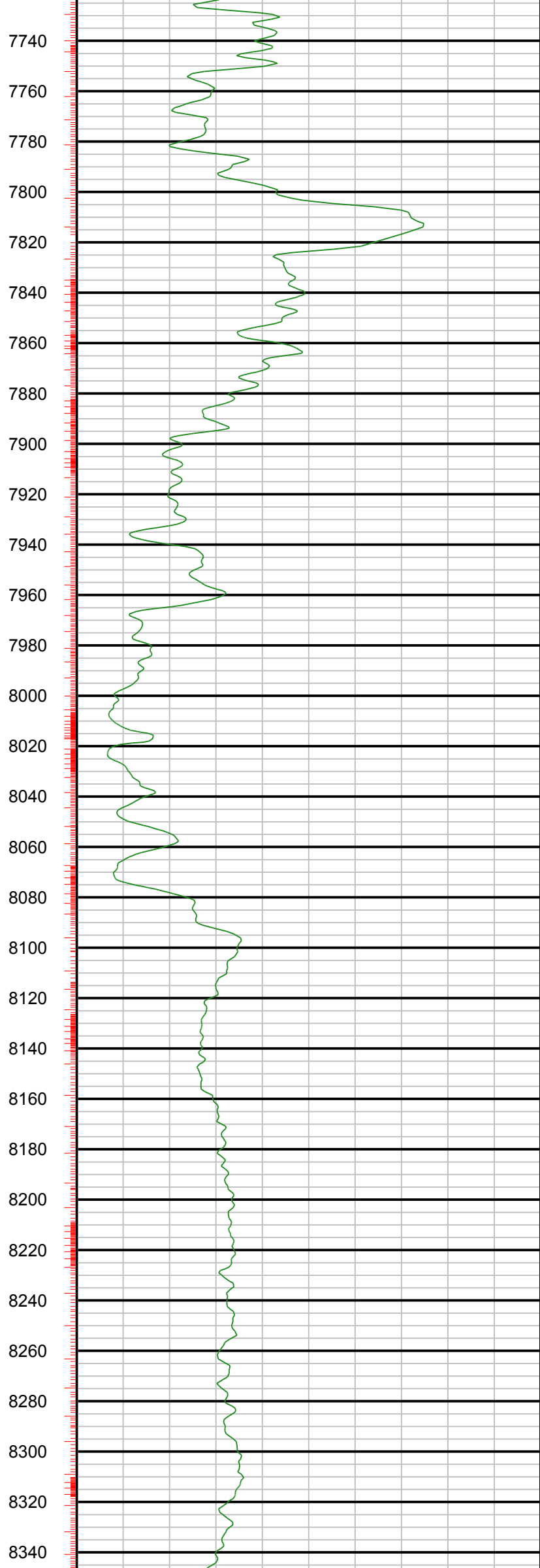
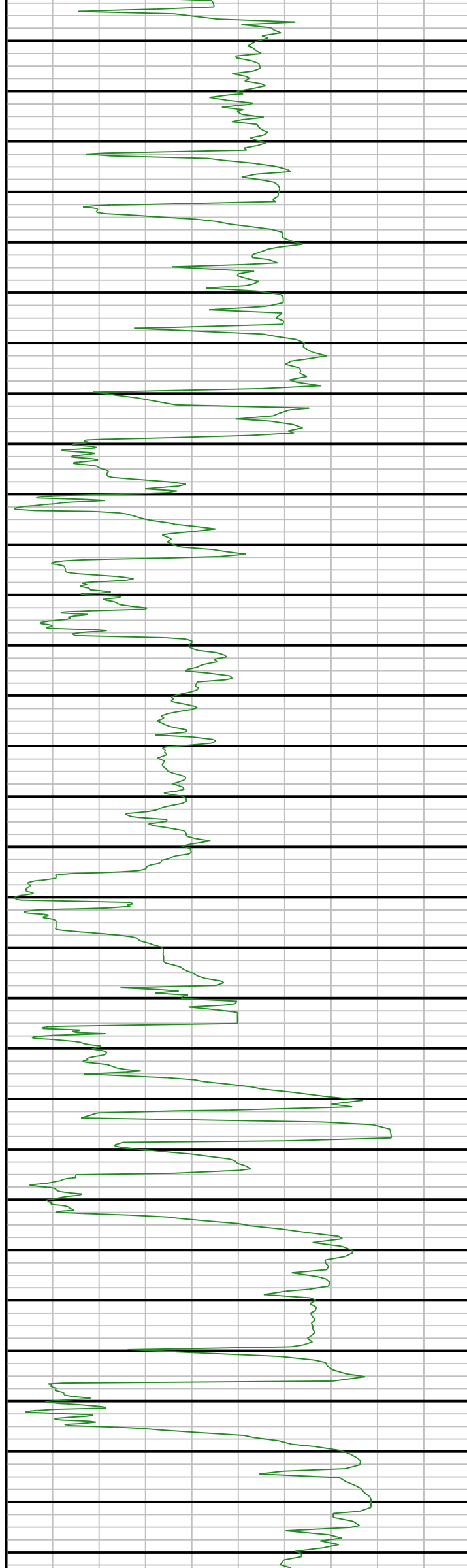
Index Type: MD

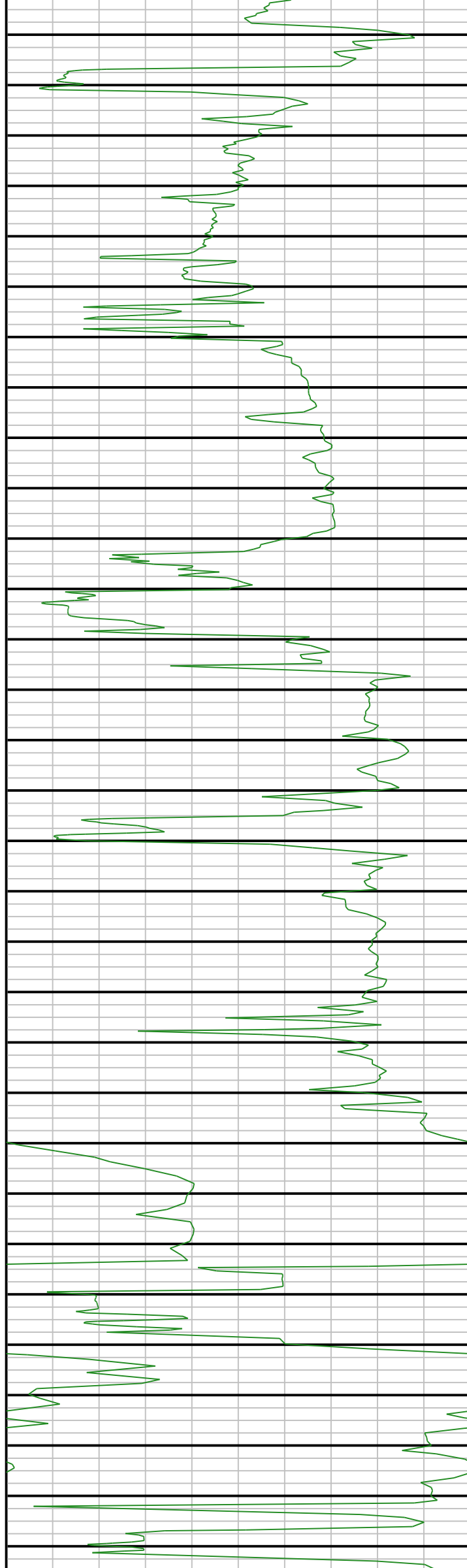
Creation Date: February 08, 2018 10:32



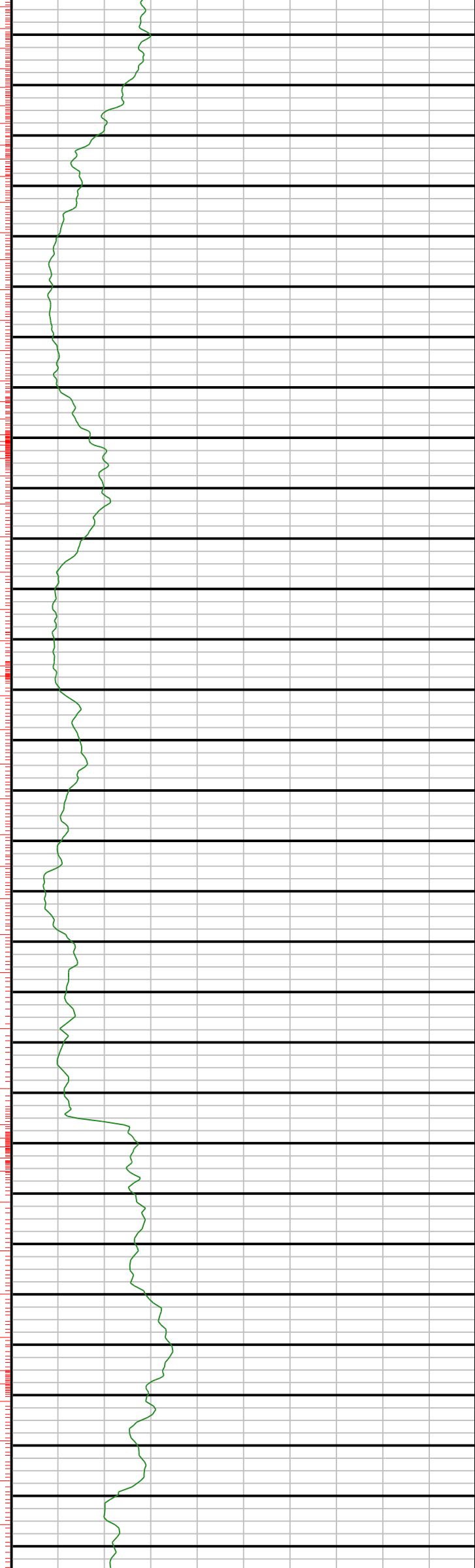


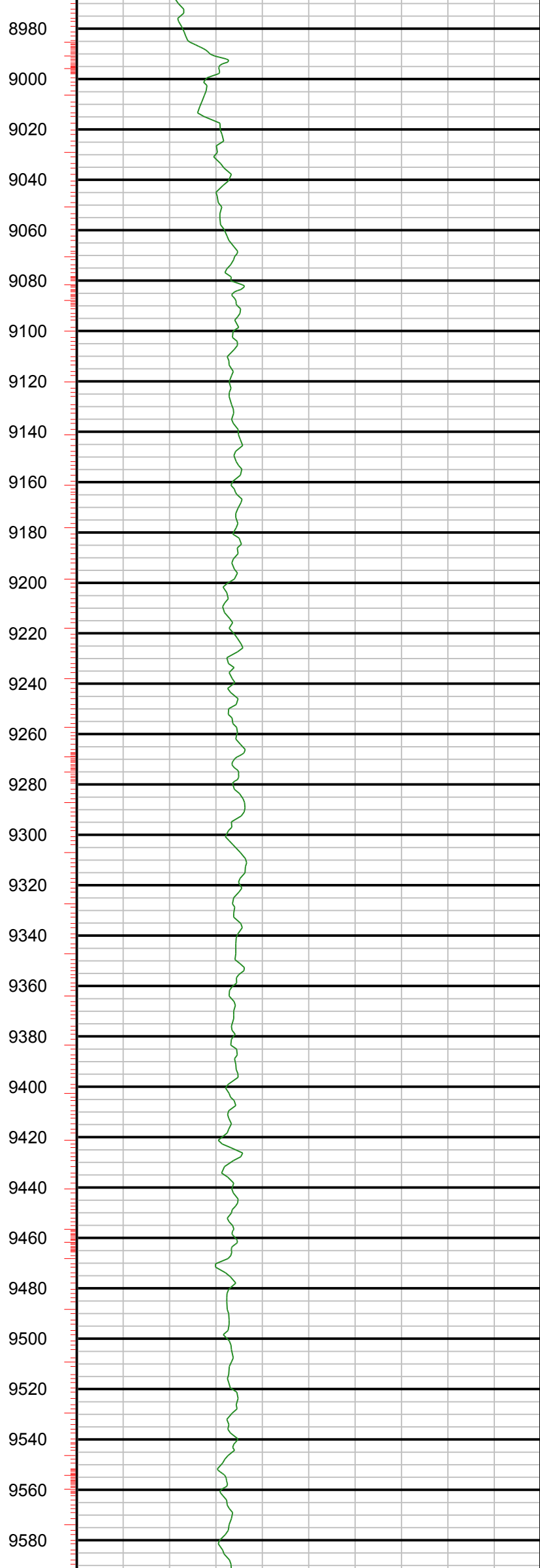
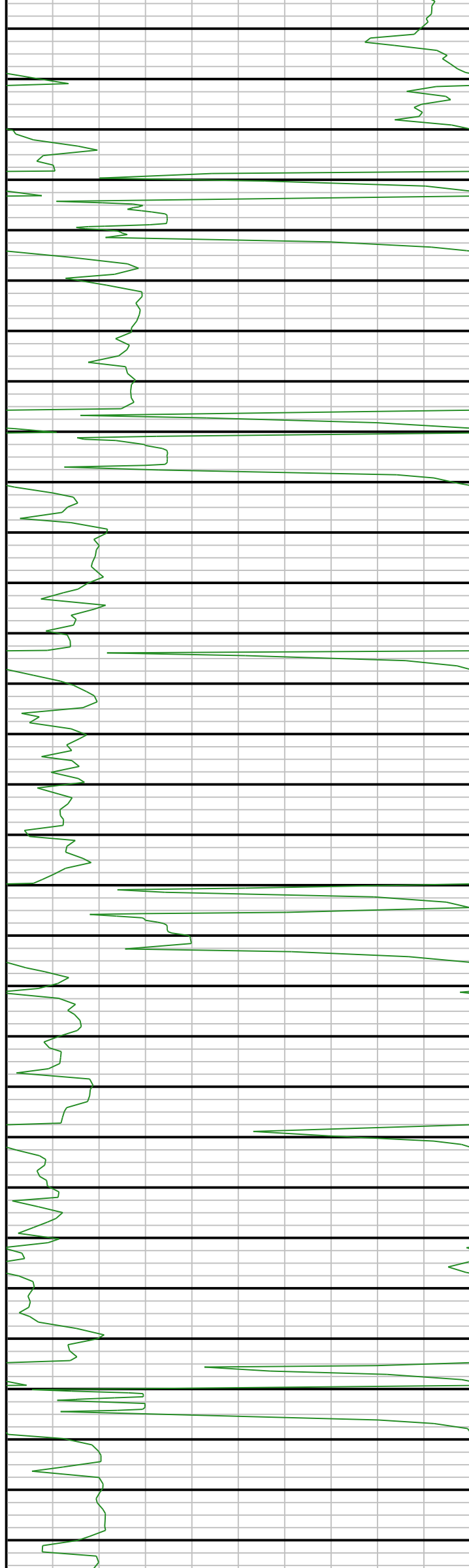


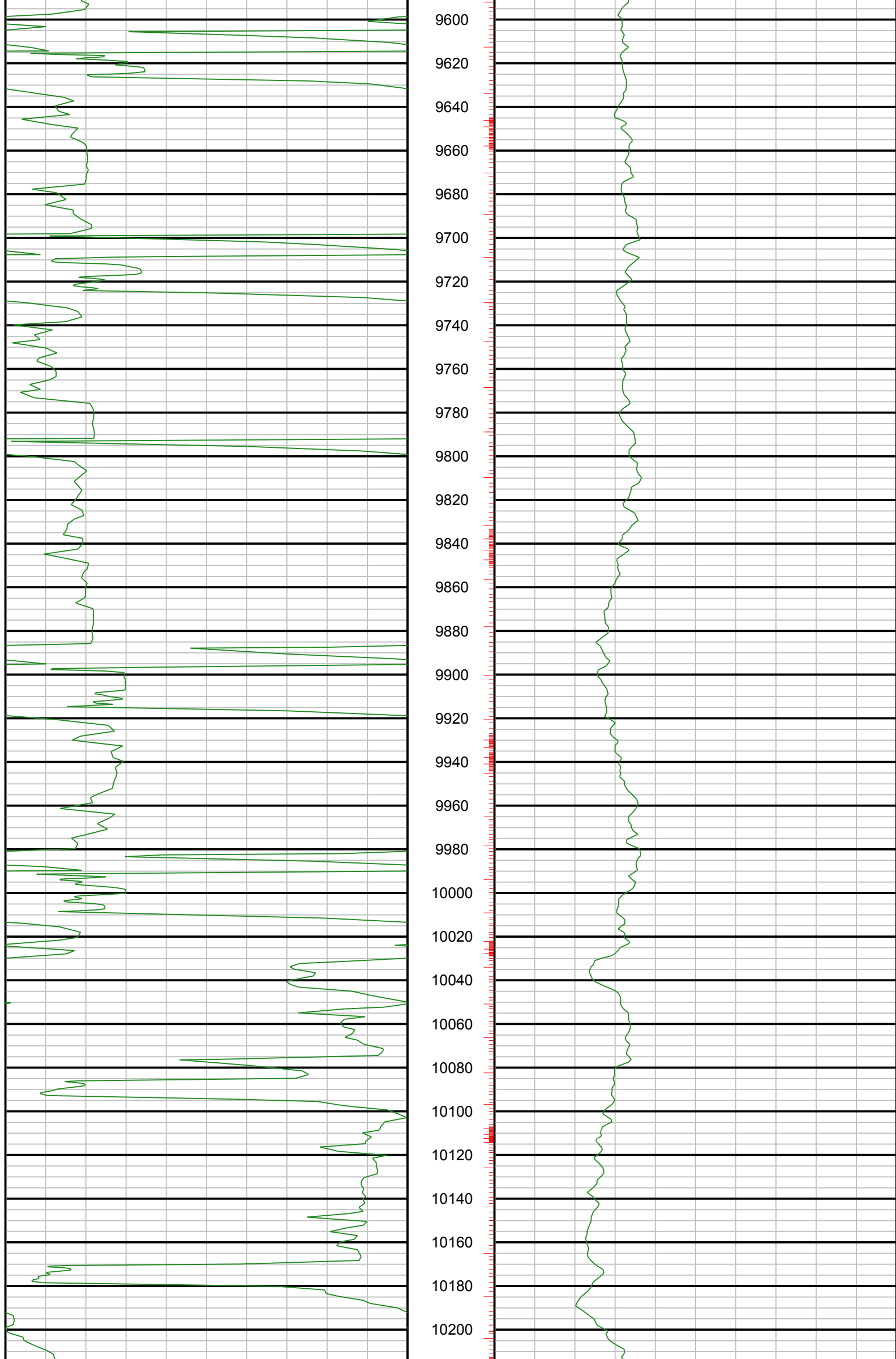




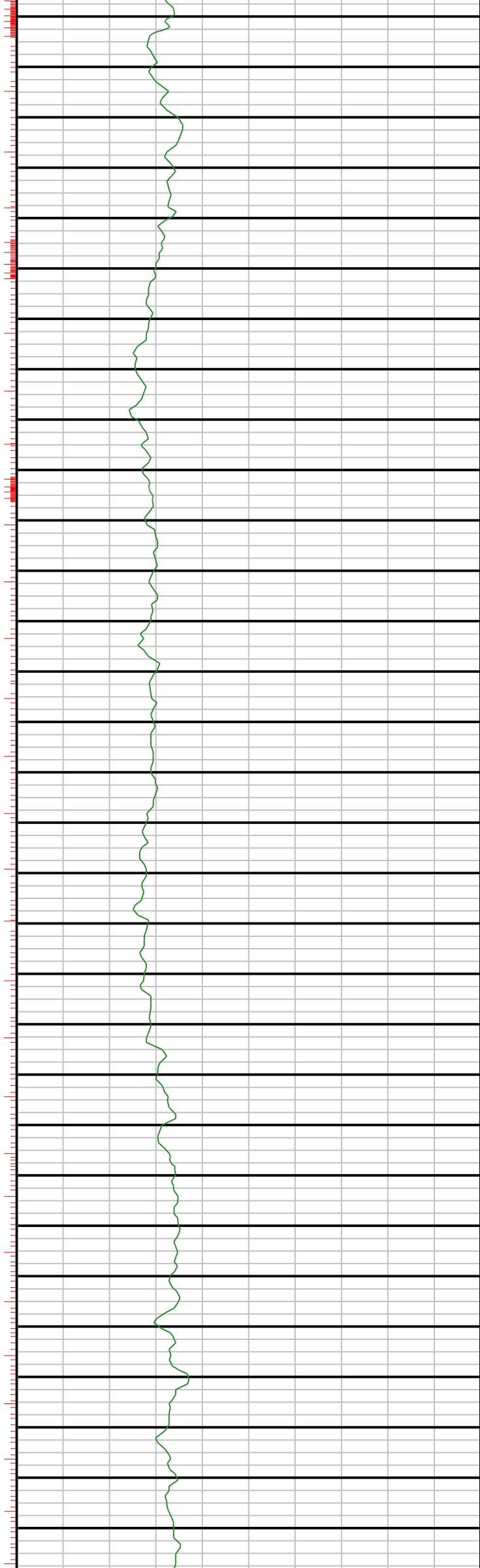
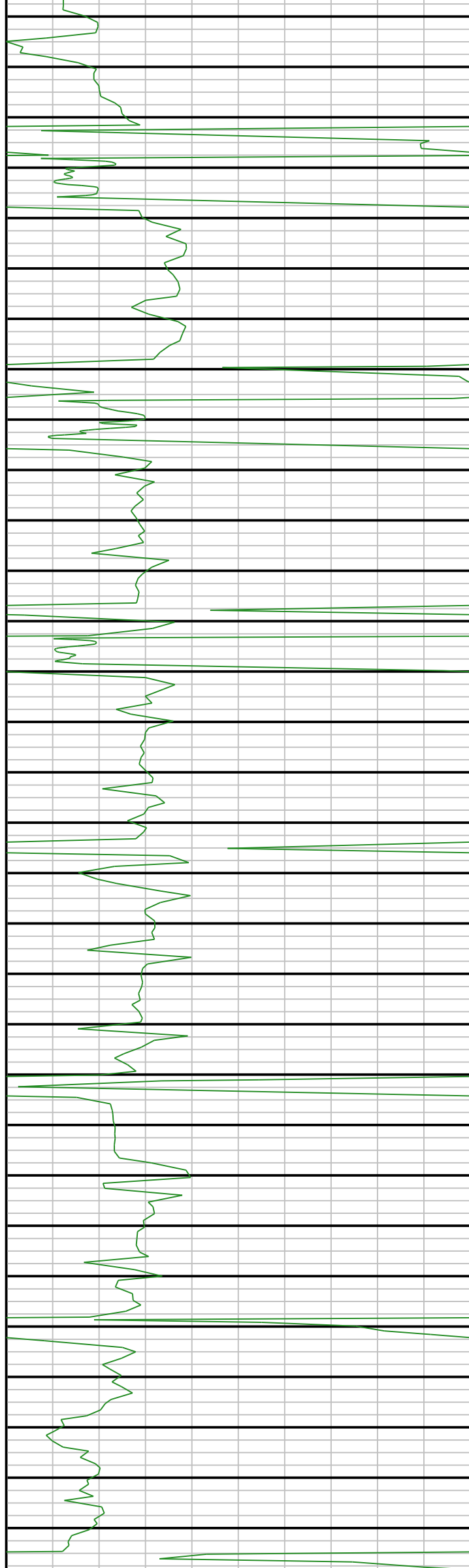
8360  
8380  
8400  
8420  
8440  
8460  
8480  
8500  
8520  
8540  
8560  
8580  
8600  
8620  
8640  
8660  
8680  
8700  
8720  
8740  
8760  
8780  
8800  
8820  
8840  
8860  
8880  
8900  
8920  
8940  
8960

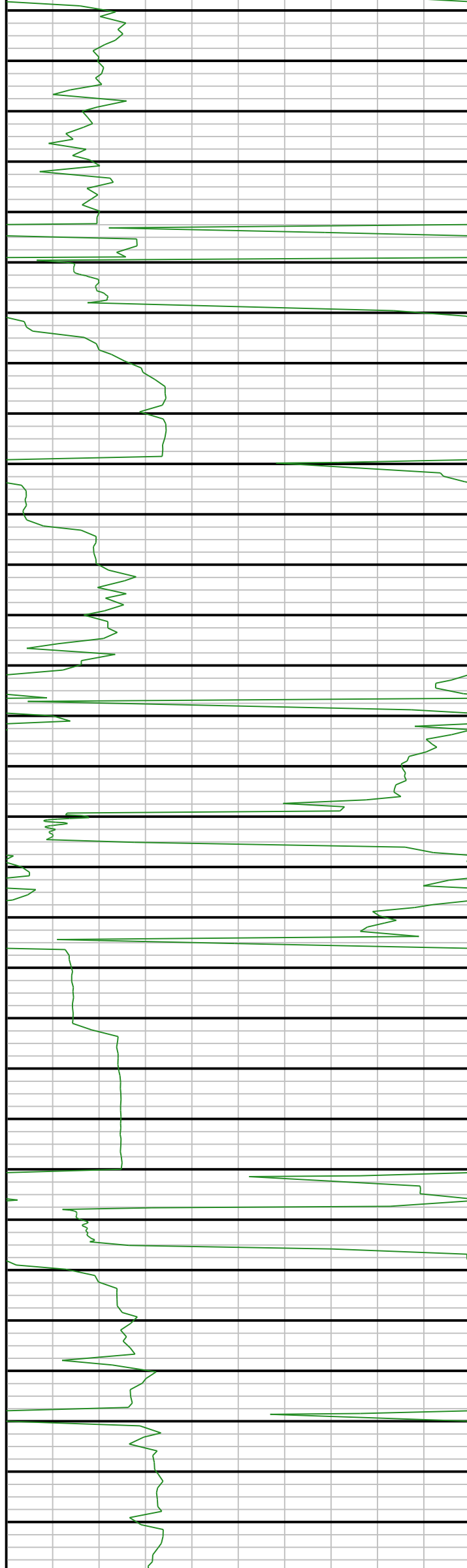




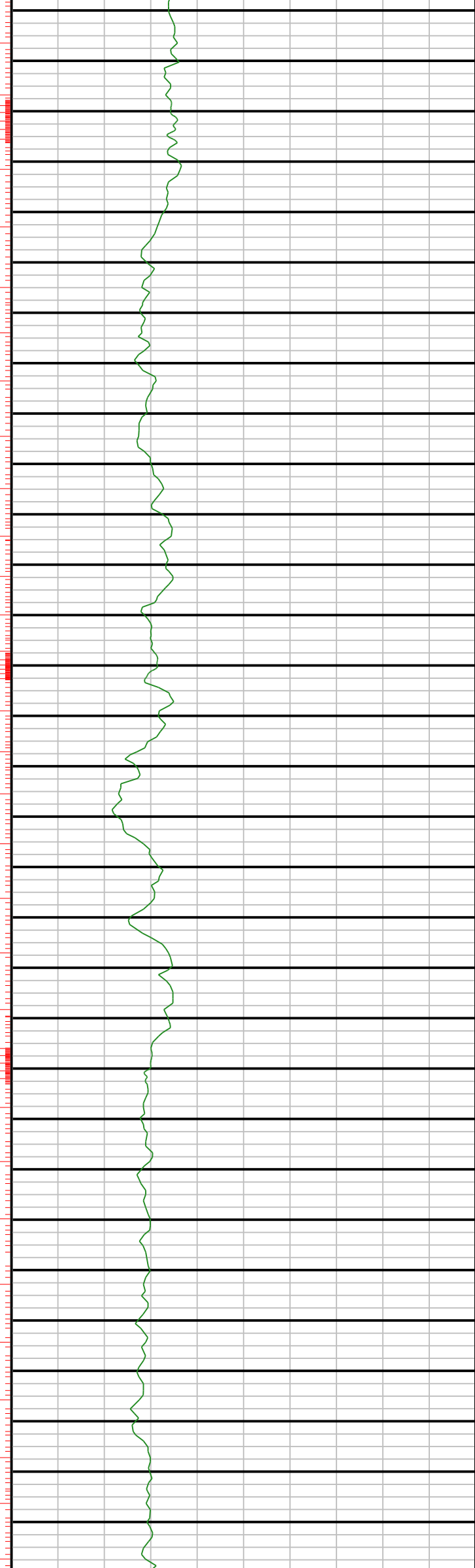


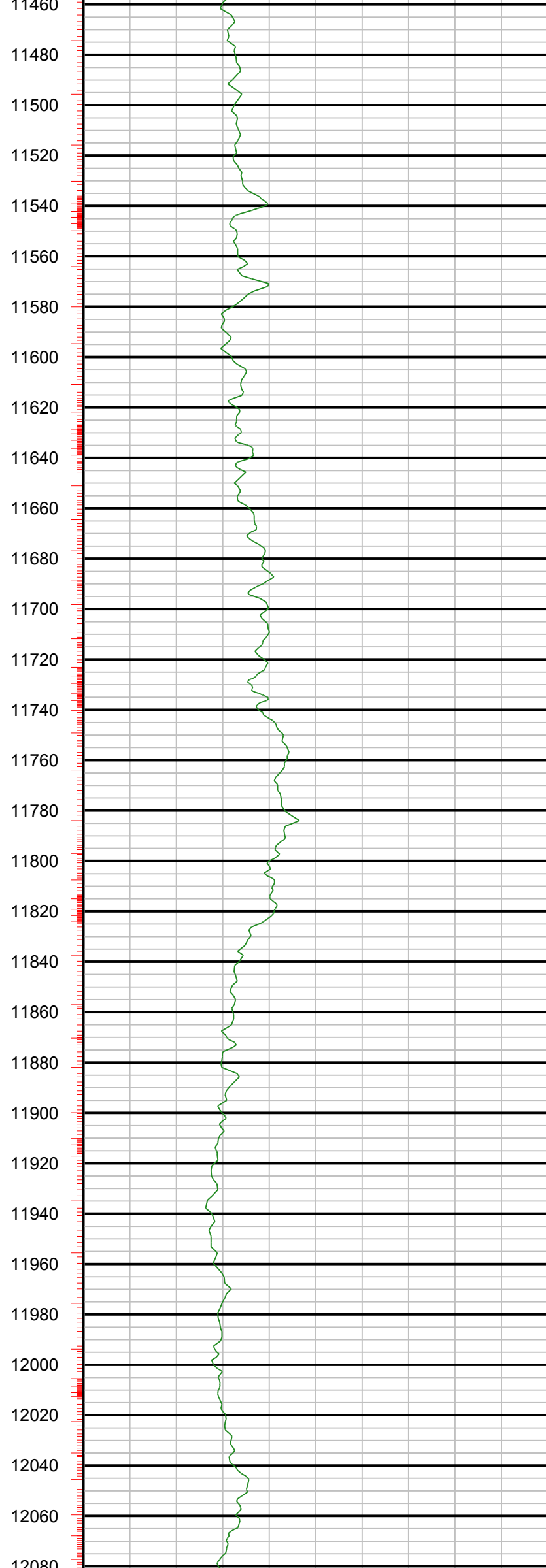
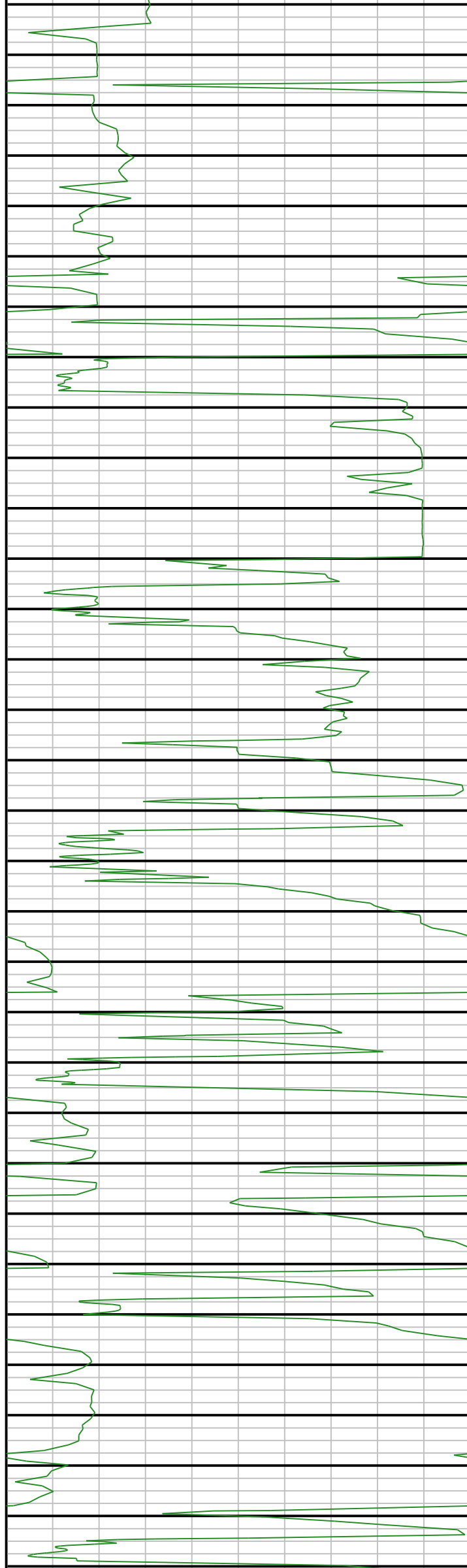


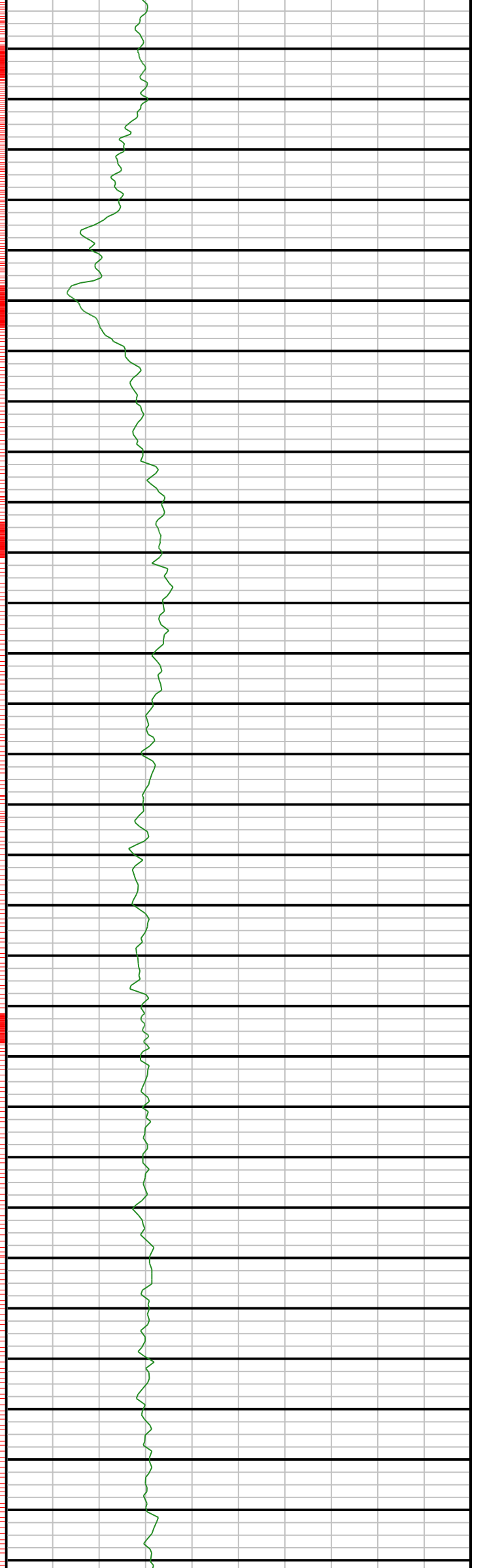
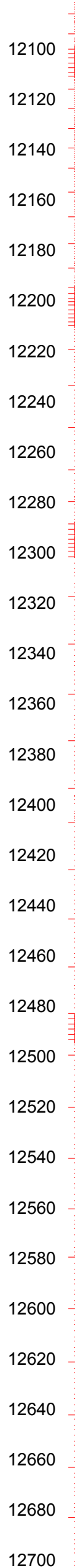
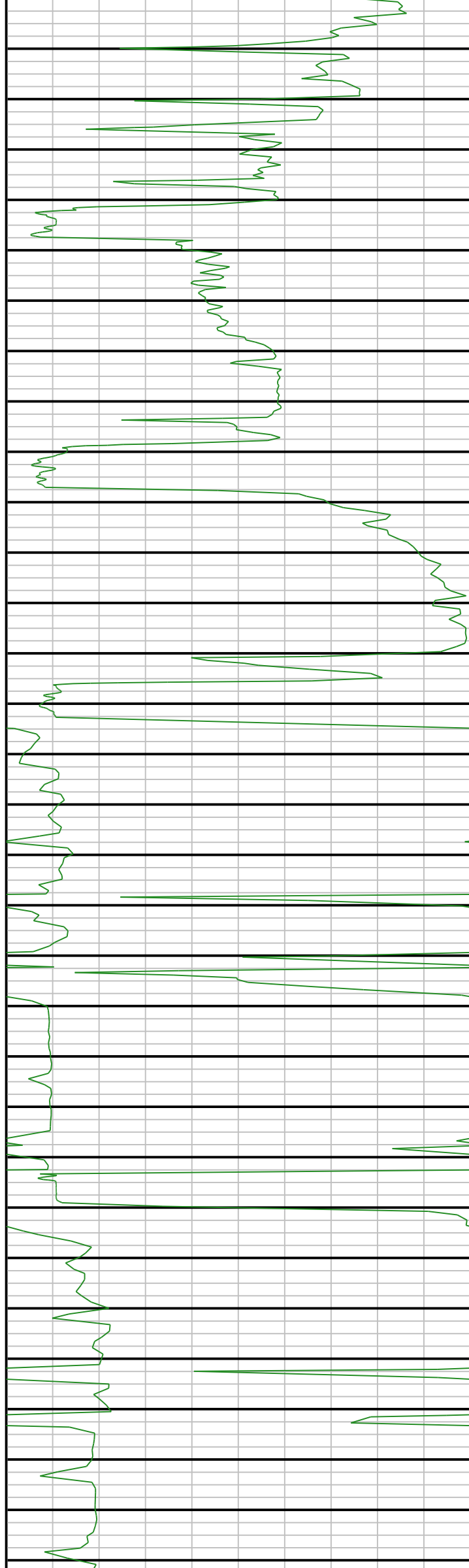


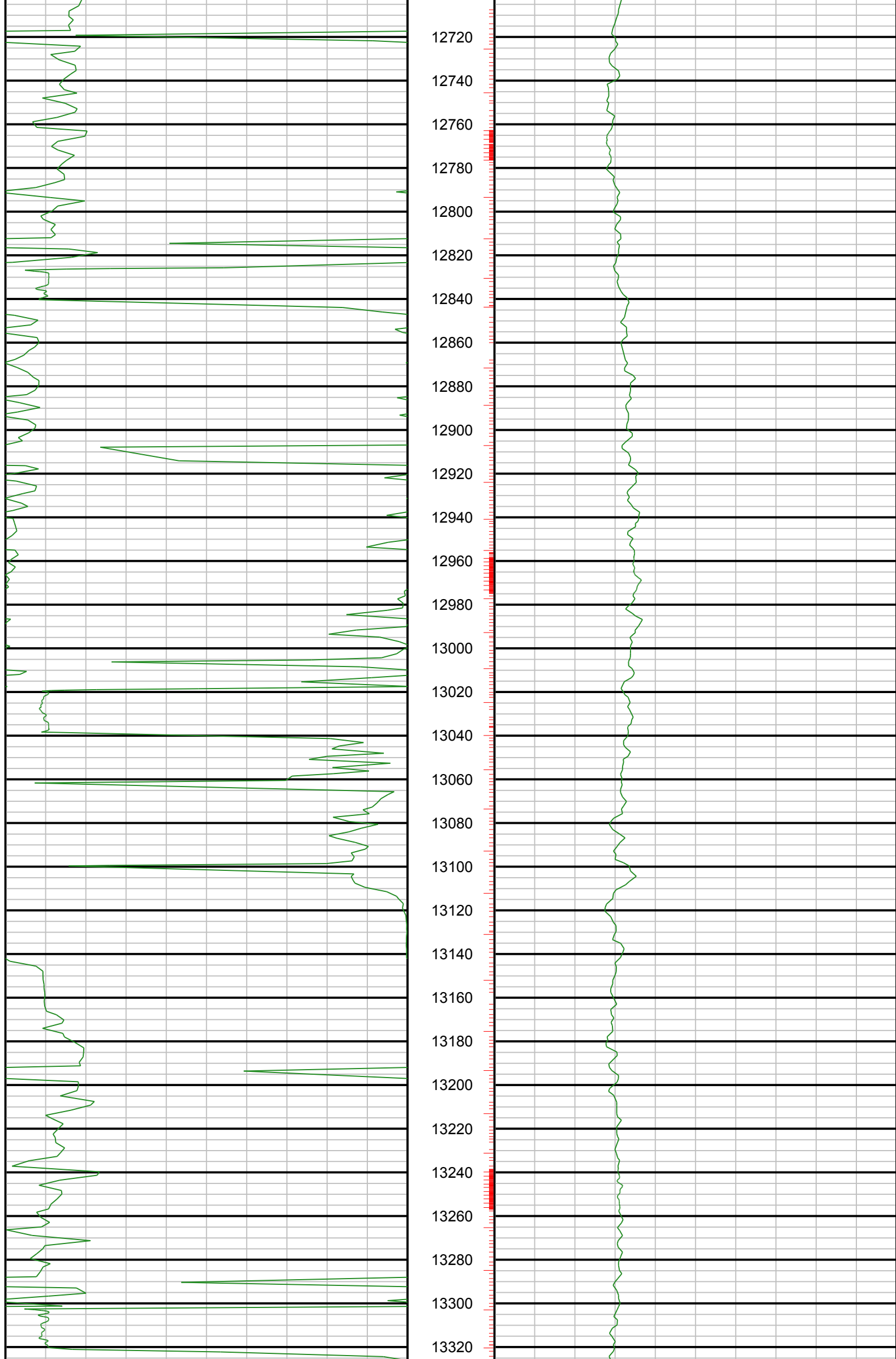


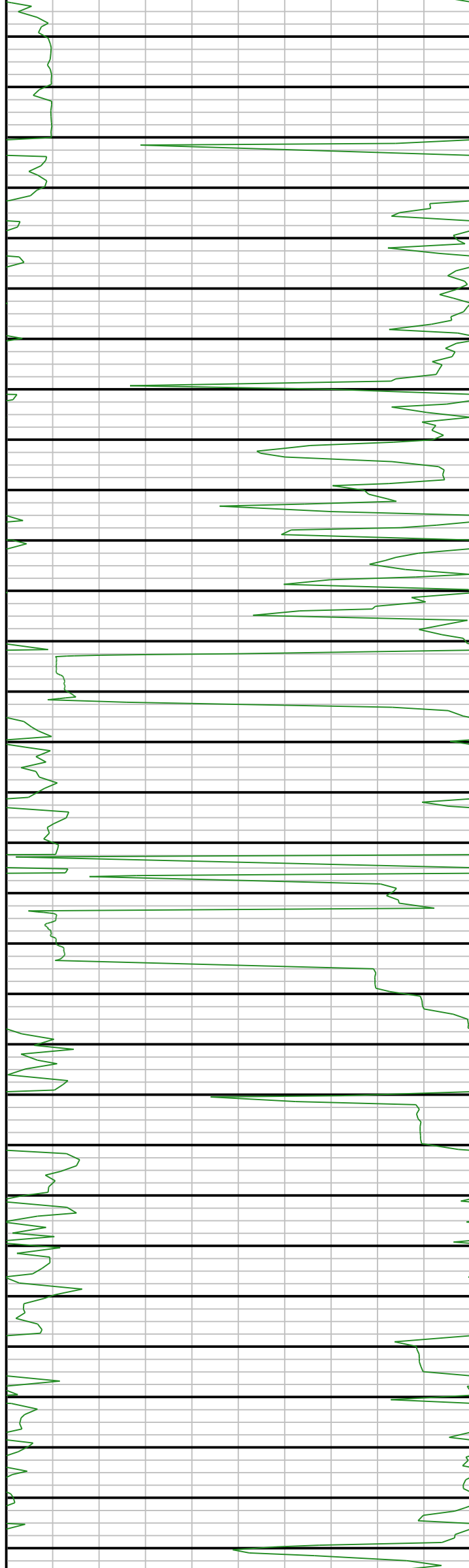
10840  
10860  
10880  
10900  
10920  
10940  
10960  
10980  
11000  
11020  
11040  
11060  
11080  
11100  
11120  
11140  
11160  
11180  
11200  
11220  
11240  
11260  
11280  
11300  
11320  
11340  
11360  
11380  
11400  
11420  
11440











13340  
13360  
13380  
13400  
13420  
13440  
13460  
13480  
13500  
13520  
13540  
13560  
13580  
13600  
13620  
13640  
13660  
13680  
13700  
13720  
13740  
13760  
13780  
13800  
13820  
13840  
13860  
13880  
13900  
13920  
13940

