

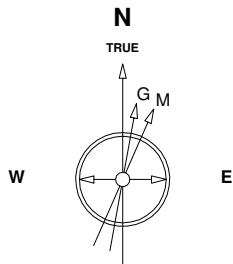
Great Western Operating Company, LLC

Location Colorado
Field Wattenburg
Installation Ocho
Slot Slot E16 - Ocho LD 17-369HC
Well Ocho LD 17-369HC
Wellbore Ocho LD 17-369HC (PWB)

Created by admin

Date plotted 12-Sep-2017

Plot reference is Ocho LD 17-369HC (PWB).
Ref wellpath is Ocho LD 17-369HC (PWP#1).
Coordinates are in Feet reference Slot E16 - Ocho LD 17-369HC.
True Vertical Depths are reference Rig Datum.
Measured Depths are reference Rig Datum.
Rig Datum: Planned Datum #1
Rig Datum to Mean Sea Level: 20.00 ft.
Plot North is aligned to TRUE North.

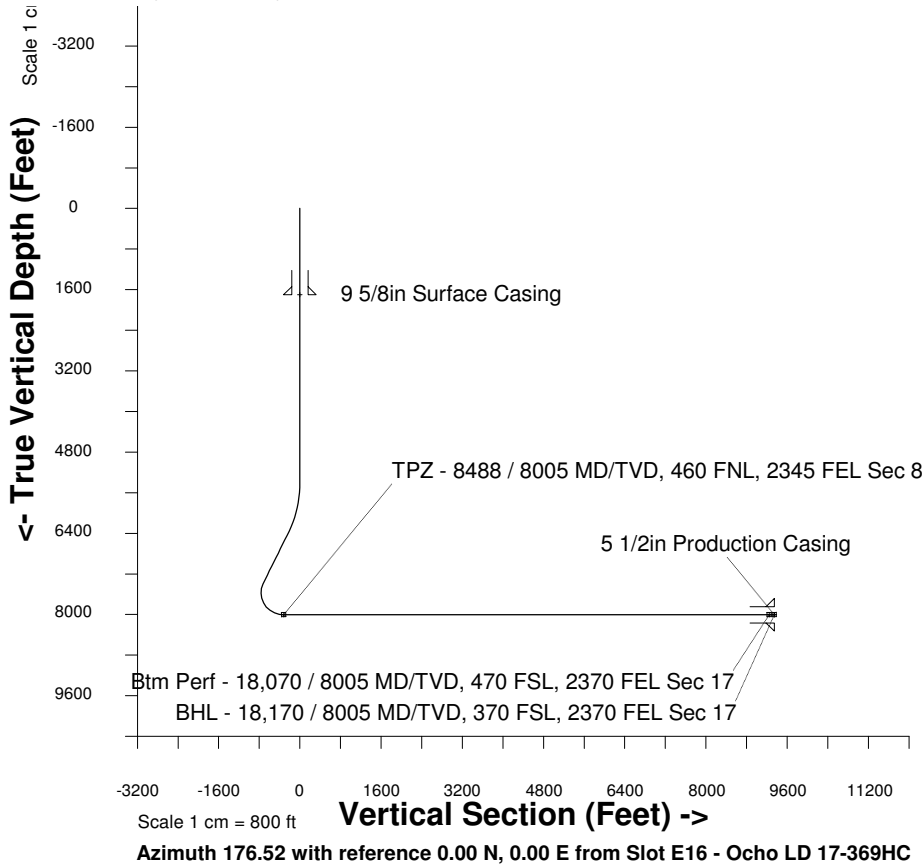


Scale 1 cm = 400 ft

East (Feet) ->

-6400 -5600 -4800 -4000 -3200 -2400 -1600 -800 0 800 1600 2400 3200 4000

31-Aug-2016
IGRF Model [1900.0-2020.0] Dip: 66.52 deg Field: 52289.7 nT
Lat: N39 59 4.9488 Long: W104 54 50.5188 Elev: 0.00 ft
Magnetic North is 8.34 deg East of TRUE North
To correct azimuth from Magnetic to TRUE add 8.34 deg



WELL PROFILE DATA

Point	MD	Inc	Azi	TVD	North	East	deg/100ft	V. Sect
Tie on	0.00	0.00	0.00	0.00	S 0.00	W 0.00		0.00
KOP	5415.50	0.00	27.68	5415.50	S 0.00	W 0.00	0.00	0.00
End of Build	6415.58	30.00	27.68	6370.50	N 226.63	E 118.87	9.84	-219.00
End of Hold	7593.95	30.00	27.68	7390.97	N 748.43	E 392.58	0.00	-723.24
Target TPZ - ... Sec 8	8488.33	90.00	179.95	8005.00	N 353.36	E 557.93	42.65	-318.87
Target Btm Pe...Sec 17	18070.14	90.00	179.95	8005.00	S 9228.44	E 566.83	0.00	9245.83
End of Turn	18070.56	90.00	180.00	8005.00	S 9228.86	E 566.83	42.65	9246.25
T.D. & Target BHL... 17	18170.14	90.00	180.00	8005.00	S 9328.44	E 566.83	0.00	9345.65

TPZ - 8488 / 8005 MD/TVD, 460 FNL, 2345 FEL Sec 8

Sec 8, T1S, R67W

Sec 17, T1S, R67W

Btm Perf - 18,070 / 8005 MD/TVD, 470 FSL, 2370 FEL Sec 17
BHL - 18,170 / 8005 MD/TVD, 370 FSL, 2370 FEL Sec 17

<- North(Feet)

Scale 1 cm = 400 ft