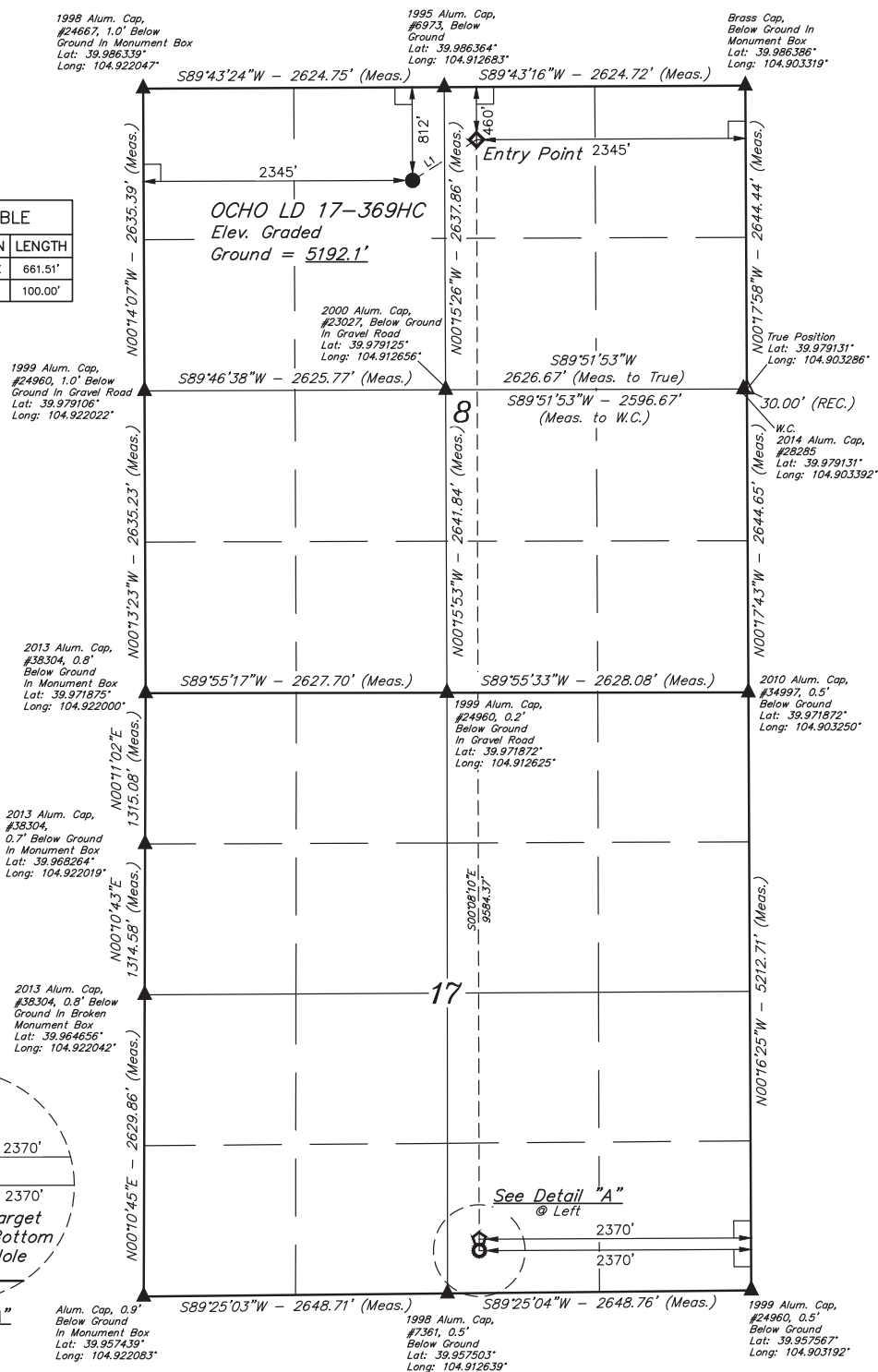
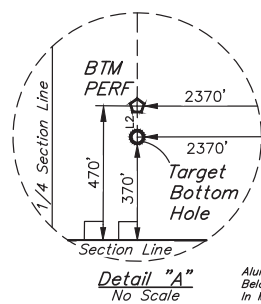


T1S, R67W, 6th P.M.

- | LINE TABLE | | |
|------------|-------------|---------|
| LINE | DIRECTION | LENGTH |
| L1 | N57°34'49"E | 661.51' |
| L2 | S00°16'25"E | 100.00' |



NAD 83 (SURFACE LOCATION)	NAD 83 (ENTRY POINT)	NAD 83 (BTM PERF)	NAD 83 (TARGET BOTTOM HOLE)
LATITUDE = 39°59'02.88" (9.984133)	LATITUDE = 39°59'06.37" (9.985103)	LATITUDE = 39°57'31.68" (9.958800)	LATITUDE = 39°57'30.69" (9.958525)
LONGITUDE = 104°54'49.22" (104.913672)	LONGITUDE = 104°54'42.05" (104.911681)	LONGITUDE = 104°54'41.94" (104.911650)	LONGITUDE = 104°54'41.93" (104.911647)
NAD 27 (SURFACE LOCATION)	NAD 27 (ENTRY POINT)	NAD 27 (BTM PERF)	NAD 27 (TARGET BOTTOM HOLE)
LATITUDE = 39°59'02.93" (9.984147)	LATITUDE = 39°59'06.43" (9.985119)	LATITUDE = 39°57'31.73" (9.958814)	LATITUDE = 39°57'30.75" (9.958542)
LONGITUDE = 104°54'47.31" (104.913142)	LONGITUDE = 104°54'40.13" (104.911147)	LONGITUDE = 104°54'40.02" (104.911117)	LONGITUDE = 104°54'40.02" (104.911117)

BASIS OF ELEVATION



UINTAH
ENGINEERING & LAND SURVEYING

OCHO LD 17-369HC
NE 1/4 NW 1/4, SECTION 8, T1S, R67W, 6th P.M.
ADAMS COUNTY, COLORADO

SURVEYED BY	GREG WEIMER	10-06-17	SCALE
DRAWN BY	K.B.	10-06-17	1" = 1000'

WELL LOCATION PLAT

CERTIFICATE

THIS IS TO CERTIFY THAT THE ABOVE MAP WAS PREPARED FROM FIELD NOTES OF ACTUAL SURVEYS MADE IN ACCORDANCE WITH MY SURVEYING AND THAT THE SAME ARE TRUE AND CORRECT TO THE BEST OF MY KNOWLEDGE AND BELIEF.



