

Great Western Operating Company, LLC

Location Colorado
Field Wattenburg
Installation Tollway
Slot S05 - Tollway LC 24-373HN
Well Tollway LC 24-373HN
Wellbore Tollway LC 24-373HN (PWB)

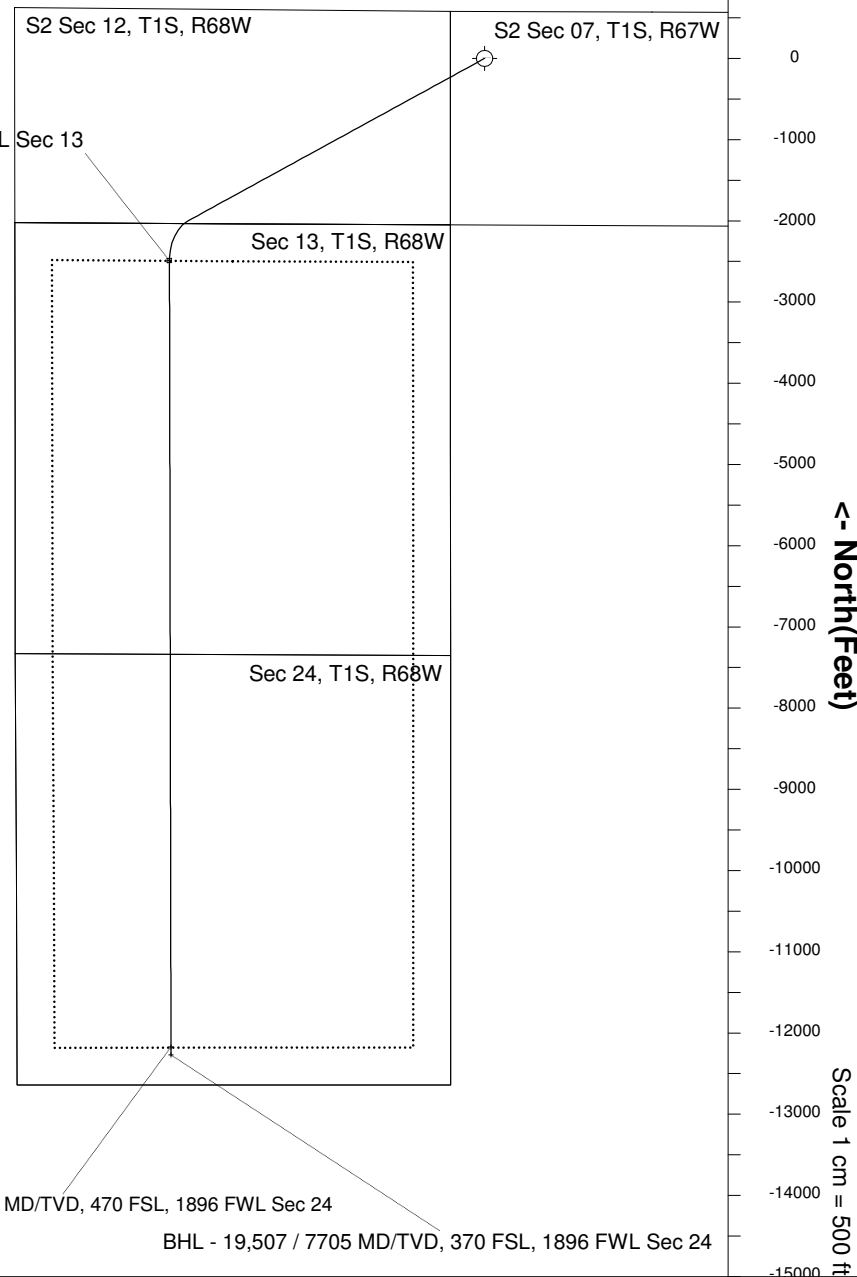
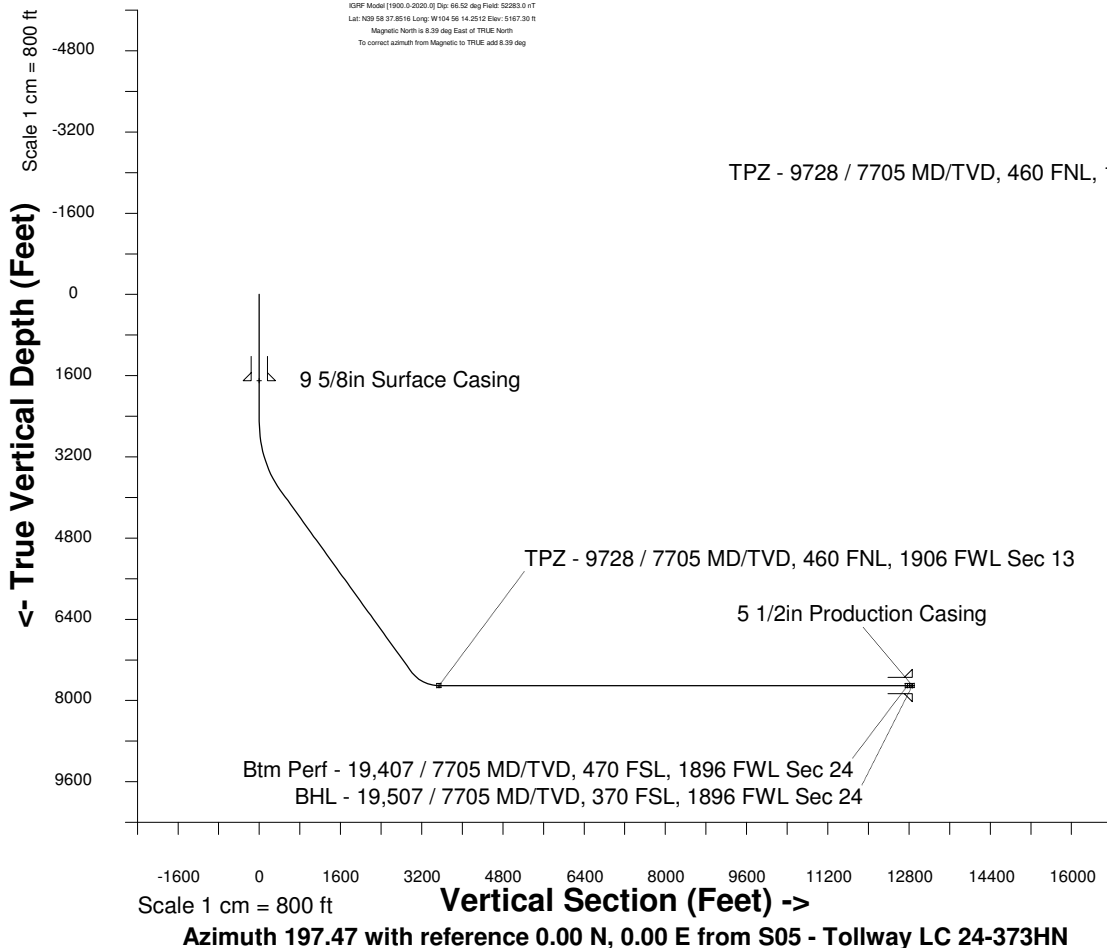
Created by admin
Date plotted 17-Jan-2018
Plot reference is Tollway LC 24-373HN (PWB).
Ref wellpath is Tollway LC 24-373HN (PWP#1).
Coordinates are in Feet reference S05 - Tollway LC 24-373HN.
True Vertical Depths are reference Rig Datum.
Measured Depths are reference Rig Datum.
Rig Datum: Planned Datum #1
Rig Datum to Mean Sea Level: 5187.30 ft.
Plot North is aligned to TRUE North.

Scale 1 cm = 500 ft

East (Feet) ->

-10000 -9000 -8000 -7000 -6000 -5000 -4000 -3000 -2000 -1000 0 1000 2000 3000

20-Apr-2016
KOPF Model [1900.0-2020.0] Dip: 66.52 deg Field: 52283.0 nT
Lat: N29 58 37.8516 Long: W104 56 14.2512 Elev: 5167.30 ft
Magnetic North is 6.39 deg East of TRUE North
To correct azimuth from Magnetic to TRUE, add 6.39 deg



WELL PROFILE DATA

Point	MD	Inc	Azi	TVD	North	East	deg/100ft	V. Sect
Tie on	0.00	0.00	0.00	0.00	S 0.00	W 0.00		-0.00
KOP	2489.00	0.00	241.28	2489.00	S 0.00	W 0.00	0.00	-0.00
End of Build	3988.93	45.00	241.28	3839.42	S 268.76	W 490.53	9.84	403.59
End of Hold	9089.32	45.00	241.28	7446.09	S 2001.60	W 3653.33	0.00	3005.82
Target TPZ - ...Sec 13	9727.60	90.00	179.89	7705.00	S 2492.14	W 3879.68	36.09	3541.68
Target Btm Pe...Sec 24	19406.67	90.00	179.89	7705.00	S 12171.19	W 3861.28	0.00	12768.96
End of Turn	19407.06	90.00	179.85	7705.00	S 12171.58	W 3861.28	36.09	12769.34
T.D. & Target BHL... 24	19506.48	90.00	179.85	7705.00	S 12271.00	W 3861.02	0.00	12864.10