

Great Western Operating Company, LLC

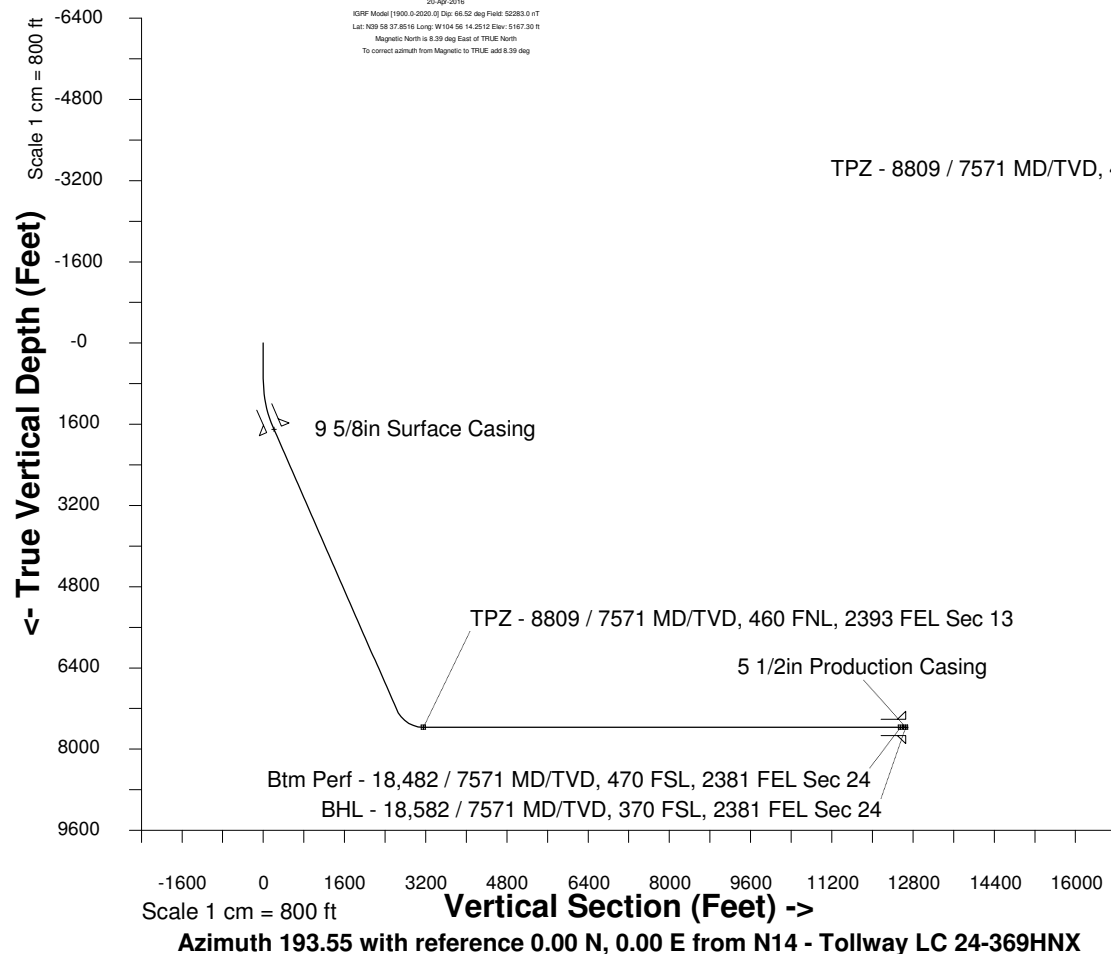
Location Colorado
Field Wattenburg
Installation Tollway
Slot N14 - Tollway LC 24-369HNX
Well Tollway LC 24-369HNX
Wellbore Tollway LC 24-369HNX (PWB)

Scale 1 cm = 500 ft

East (Feet) ->

Created by admin
Date plotted 17-Jan-2018
Plot reference is Tollway LC 24-369HNX (PWB).
Ref wellpath is Tollway LC 24-369HNX (PWP#1).
Coordinates are in Feet reference N14 - Tollway LC 24-369HNX.
True Vertical Depths are reference Rig Datum.
Measured Depths are reference Rig Datum.
Rig Datum: Planned Datum #1
Rig Datum to Mean Sea Level: 5187.30 ft.
Plot North is aligned to TRUE North.

20-Apr-2016
KOPF Model [1900.0-2020.0] Dip: 66.52 deg Field: 52283.0 nT
Lat: N29 58 37.8516 Long: W104 56 14.2512 Elev: 5167.30 ft
Magnetic North is 6.39 deg East of TRUE North
To correct azimuth from Magnetic to TRUE, add 6.39 deg



WELL PROFILE DATA

Point	MD	Inc	Azi	TVD	North	East	deg/100ft	V. Sect
Tie on	0.00	0.00	0.00	0.00	S 0.00	W 0.00		-0.00
KOP	702.00	0.00	234.28	702.00	S 0.00	W 0.00	0.00	-0.00
End of Build	1701.90	30.00	234.28	1656.85	S 149.37	W 207.69	9.84	193.87
End of Hold	8144.91	30.00	234.28	7236.82	S 2030.18	W 2822.80	0.00	2635.01
Target TPZ - ...Sec 13	8809.12	90.00	179.92	7571.00	S 2528.69	W 2978.85	36.09	3156.21
Target Btm Pe...Sec 24	18481.99	90.00	179.92	7571.00	S 12201.55	W 2964.59	0.00	12556.51
End of Turn	18482.82	90.00	180.01	7571.00	S 12202.38	W 2964.59	36.09	12557.32
T.D. & Target BHL... 24	18582.17	90.00	180.01	7571.00	S 12301.72	W 2964.60	0.00	12653.90

