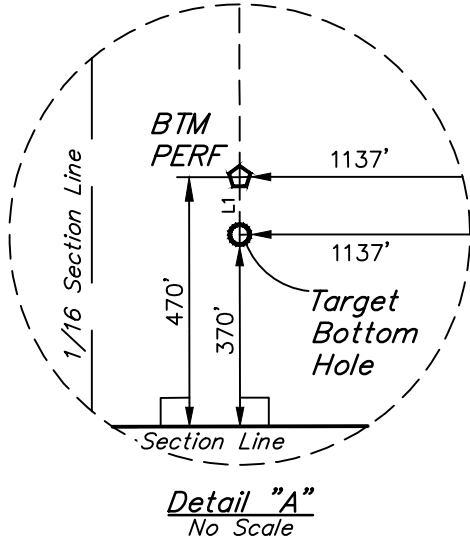
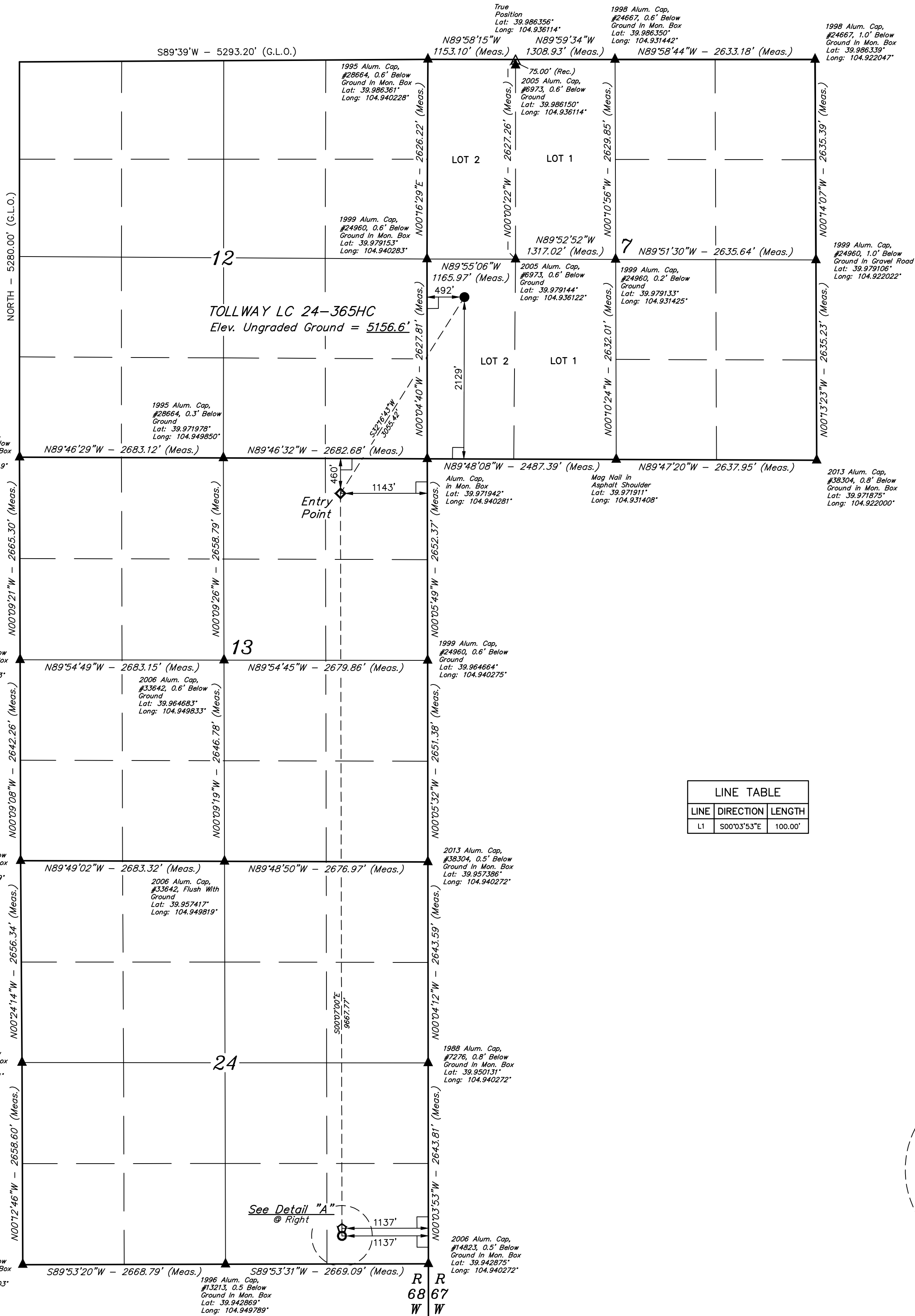
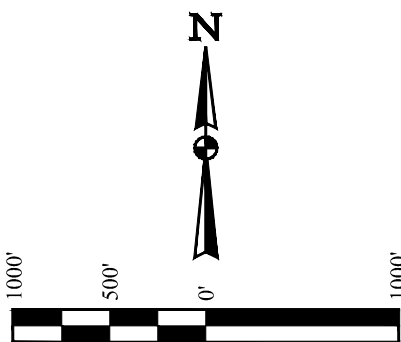


BASIS OF BEARINGS  
BASIS OF ELEVATION  
BENCHMARK JR 53 5026 LOCATED IN THE SW 1/4 SE 1/4  
OF SECTION 18, T1N, R68W, 6th P.M., TAKEN FROM 1988  
PUBLISHED DATUM BY THE UNITED STATES DEPARTMENT  
OF THE INTERIOR, GEOLOGICAL SURVEY AS BEING 5028 FEET.



CERTIFICATE OF RECORD  
THIS IS TO CERTIFY THAT THE ABOVE SHOWN SURVEY WAS MADE IN ACCORDANCE WITH THE NOTES OF ACTUAL SURVEYS MADE BY ME AND UNDER MY SUPERVISION, AND THAT THE SAME ARE TRUE AND CORRECT TO THE BEST OF MY KNOWLEDGE AND BELIEF.

REGISTERED LAND SURVEYOR  
REG. NO. 28285  
STATE OF COLORADO

REV: 2 01-04-18 K.B. (BP ADD, SL, EP, TBI & NAME CHANGE)

UWELLS, LLC  
Corporate Office \* 85 South 200 East  
Vernal, UT 84078 \* (435) 789-1017

**WELL LOCATION PLAT**

SURVEYED BY	GREG WEIMER	01-04-18	SCALE
DRAWN BY	L.C.S.	03-29-16	1" = 1000'

LEGEND:

- 90° SYMBOL
- PROPOSED WELLHEAD.
- ENTRY POINT.
- BTM PERF.
- TARGET BOTTOM HOLE.
- SECTION CORNERS LOCATED. (NAD 83)
- SECTION CORNERS RE-ESTABLISHED. (Not Set on Ground.) (NAD 83)

NAD 83 (SURFACE LOCATION)	NAD 83 (ENTRY POINT)	NAD 83 (BTM PERF)	NAD 83 (TARGET BOTTOM HOLE)
LATITUDE = 39°58'40.01" (39.977780)	LATITUDE = 39°58'14.50" (39.970695)	LATITUDE = 39°56'38.99" (39.944163)	LATITUDE = 39°56'38.00" (39.943888)
LONGITUDE = 104°56'18.69" (104.938526)	LONGITUDE = 104°56'39.68" (104.944357)	LONGITUDE = 104°56'39.57" (104.944325)	LONGITUDE = 104°56'39.57" (104.944325)
NAD 27 (SURFACE LOCATION)	NAD 27 (ENTRY POINT)	NAD 27 (BTM PERF)	NAD 27 (TARGET BOTTOM HOLE)
LATITUDE = 39°58'40.06" (39.977795)	LATITUDE = 39°58'14.56" (39.970711)	LATITUDE = 39°56'39.04" (39.944178)	LATITUDE = 39°56'38.05" (39.943903)
LONGITUDE = 104°56'16.77" (104.937992)	LONGITUDE = 104°56'37.76" (104.943823)	LONGITUDE = 104°56'37.65" (104.943792)	LONGITUDE = 104°56'37.65" (104.943792)