

Great Western Operating Company, LLC

Location Colorado
Field Wattenburg
Installation Tollway
Slot N03 - Tollway LC 24-362HC
Well Tollway LC 24-362HC
Wellbore Tollway LC 24-362HC (PWB)

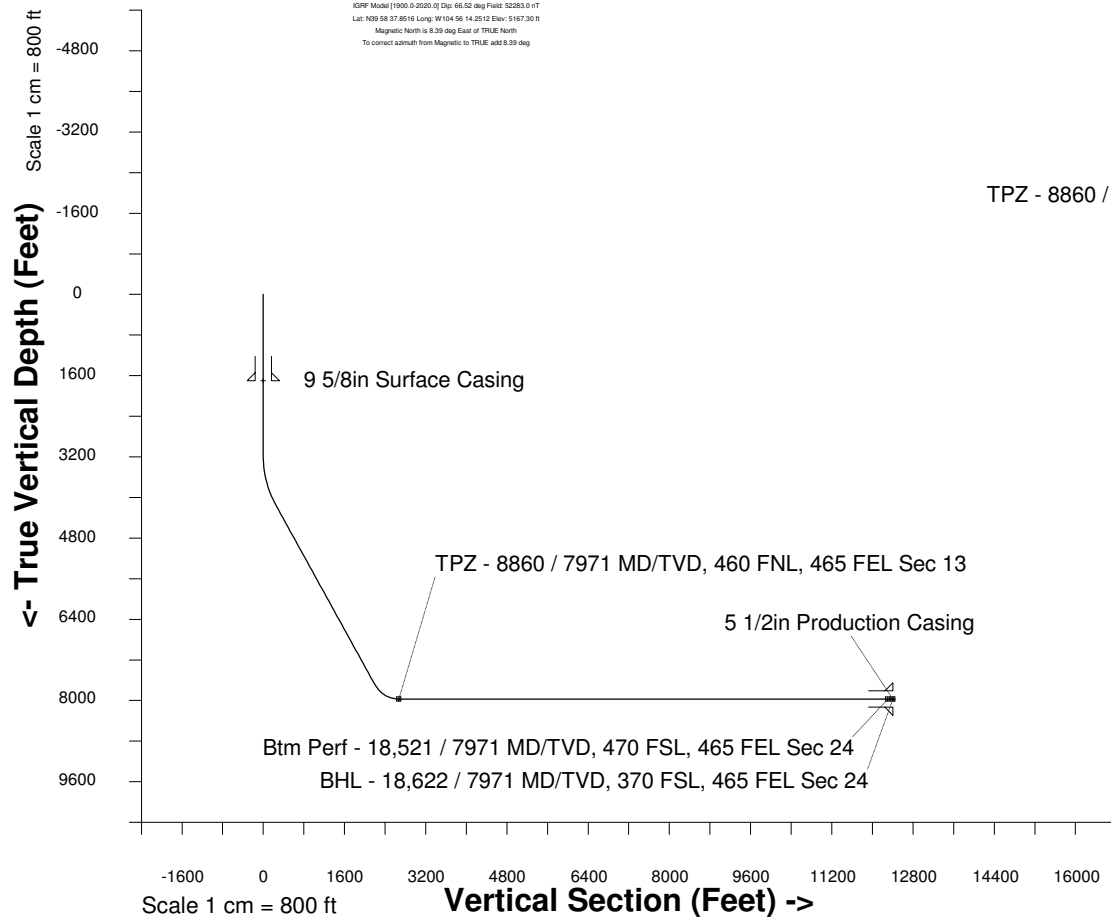
Created by admin
Date plotted 17-Jan-2018
Plot reference is Tollway LC 24-362HC (PWB).
Ref wellpath is Tollway LC 24-362HC (PWP#1).
Coordinates are in Feet reference N03 - Tollway LC 24-362HC.
True Vertical Depths are reference Rig Datum.
Measured Depths are reference Rig Datum.
Rig Datum: Planned Datum #1
Rig Datum to Mean Sea Level: 5187.30 ft.
Plot North is aligned to TRUE North.

Scale 1 cm = 500 ft

East (Feet) ->

-10000 -9000 -8000 -7000 -6000 -5000 -4000 -3000 -2000 -1000 0 1000 2000 3000

20-Apr-2016
IGFPP Model [1900.0-2020.0] Dip: 66.52 deg Field: 52283.0 nT
Lat: N03 58 37.8516 Long: W104 56 14.2512 Elev: 5167.30 ft
Magnetic North is 6.39 deg East of TRUE North
To correct azimuth from Magnetic to TRUE, add 6.39 deg



WELL PROFILE DATA

Point	MD	Inc	Azi	TVD	North	East	deg/100ft	V. Sect
Tie on	0.00	0.00	0.00	0.00	S 0.00	W 0.00		-0.00
KOP	3187.00	0.00	201.47	3187.00	S 0.00	W 0.00	0.00	-0.00
End of Build	4186.97	30.00	201.47	4141.90	S 238.11	W 93.63	9.84	244.28
End of Hold	8293.73	30.00	201.47	7698.49	S 2149.02	W 845.01	0.00	2204.68
Target TPZ - ...Sec 13	8859.84	90.00	179.99	7971.00	S 2610.09	W 902.51	36.09	2668.71
Target Btm Pe...Sec 24	18521.41	90.00	179.99	7971.00	S 12271.65	W 900.34	0.00	12304.63
End of Turn	18521.54	90.00	180.00	7971.00	S 12271.79	W 900.34	36.09	12304.77
T.D. & Target BHL... 24	18621.59	90.00	180.00	7971.00	S 12371.83	W 900.34	0.00	12404.55

