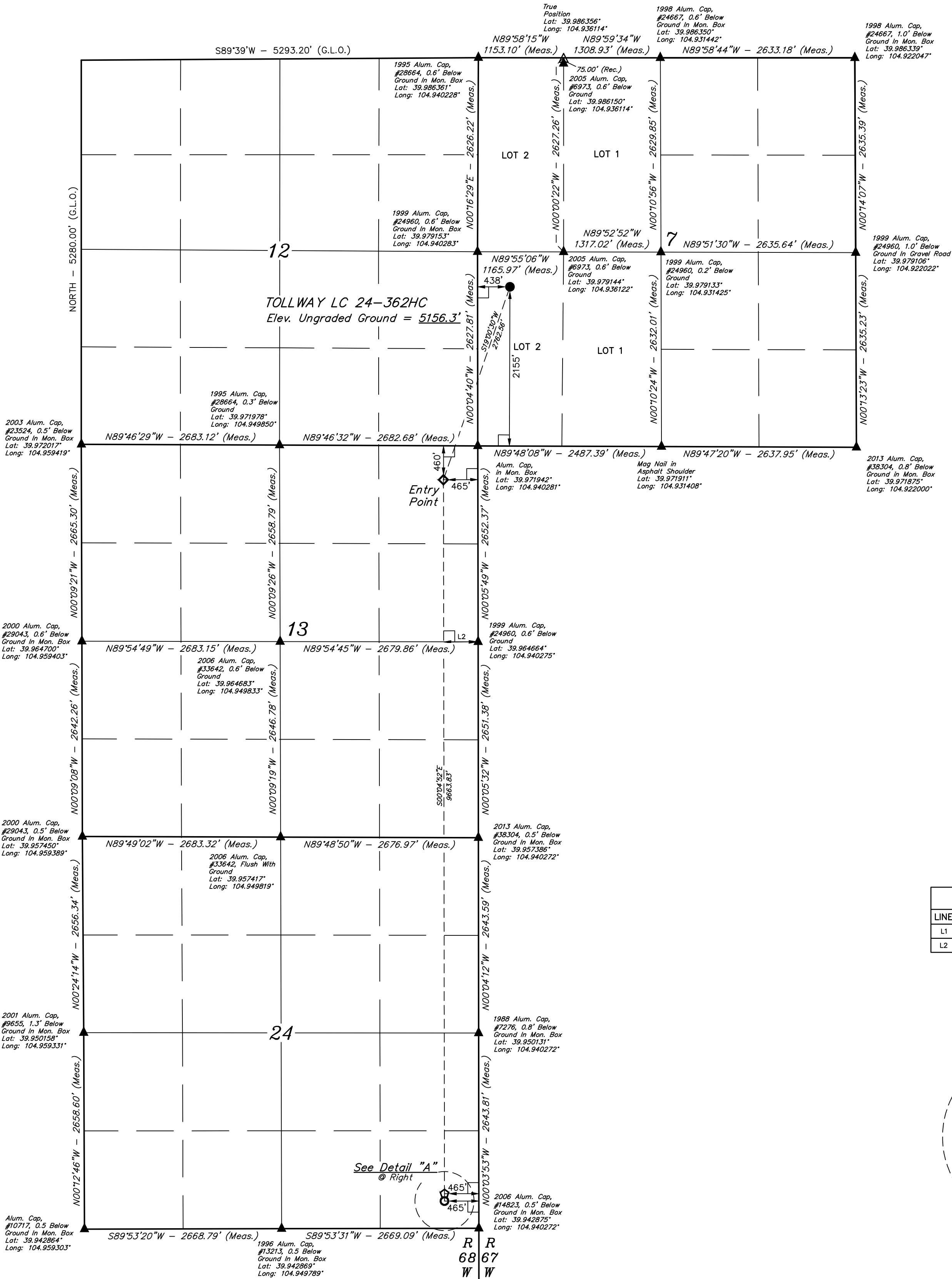
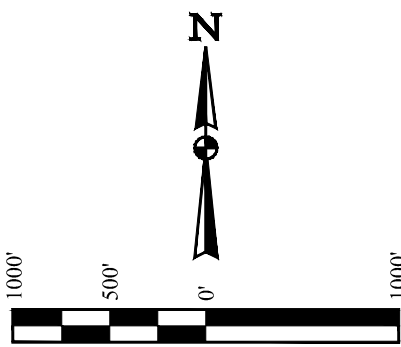


T1S, R67W, 6th P.M.

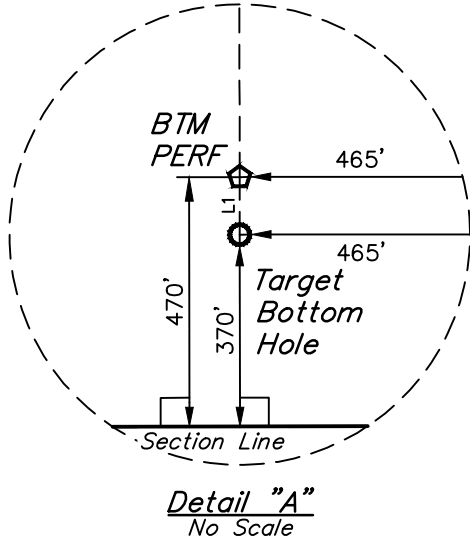
GREAT WESTERN OPERATING COMPANY

TOLLWAY LC 24-362HC  
NW 1/4 SW 1/4, SECTION 7, T1S, R67W, 6th P.M.  
ADAMS COUNTY, COLORADO

BASIS OF BEARINGS  
BASIS OF ELEVATION  
BENCHMARK JR 53 5026 LOCATED IN THE SW 1/4 SE 1/4  
OF SECTION 18, T1N, R68W, 6th P.M., TAKEN FROM 1988  
PUBLISHED DATUM BY THE UNITED STATES DEPARTMENT  
OF THE INTERIOR, GEOLOGICAL SURVEY AS BEING 5028 FEET.



LINE TABLE		
LINE	DIRECTION	LENGTH
L1	S00°03'53"E	100.00'
L2	S89°55'08"W	465.61'



CERTIFICATE OF RECORD  
THIS IS TO CERTIFY THAT THE ABOVE IS A TRUE AND CORRECT COPY OF THE NOTES OF ACTUAL SURVEYS MADE BY ME AND UNDER MY SUPERVISION AND THAT THE SAME ARE TRUE AND CORRECT TO THE BEST OF MY KNOWLEDGE AND BELIEF.

REGISTERED LAND SURVEYOR  
REG. NO. 28285  
STATE OF COLORADO  
JULY 18, 2018

REV: 2 01-04-18 K.B. (BP ADD, SL, EP, TBI & NAME CHANGE)

SURVEYED BY		GREG WEIMER	01-04-18	SCALE
DRAWN BY		L.C.S.	03-29-16	1" = 1000'
WELL LOCATION PLAT				

LEGEND:

- 90° SYMBOL
- PROPOSED WELLHEAD.
- ENTRY POINT.
- BTM PERF.
- TARGET BOTTOM HOLE.
- SECTION CORNERS LOCATED. (NAD 83)
- SECTION CORNERS RE-ESTABLISHED. (Not Set on Ground.) (NAD 83)

NAD 83 (SURFACE LOCATION)	NAD 83 (ENTRY POINT)	NAD 83 (BTM PERF)	NAD 83 (TARGET BOTTOM HOLE)
LATITUDE = 39°58'40.26" (39.977851)	LATITUDE = 39°58'14.47" (39.970686)	LATITUDE = 39°56'38.99" (39.944164)	LATITUDE = 39°56'38.00" (39.943889)
LONGITUDE = 104°56'19.38" (104.938718)	LONGITUDE = 104°56'30.98" (104.941938)	LONGITUDE = 104°56'30.95" (104.941929)	LONGITUDE = 104°56'30.95" (104.941929)
NAD 27 (SURFACE LOCATION)	NAD 27 (ENTRY POINT)	NAD 27 (BTM PERF)	NAD 27 (TARGET BOTTOM HOLE)
LATITUDE = 39°58'40.32" (39.977867)	LATITUDE = 39°58'14.53" (39.970701)	LATITUDE = 39°56'39.04" (39.944179)	LATITUDE = 39°56'38.06" (39.943905)
LONGITUDE = 104°56'17.46" (104.938185)	LONGITUDE = 104°56'29.06" (104.941405)	LONGITUDE = 104°56'29.02" (104.941396)	LONGITUDE = 104°56'29.02" (104.941396)