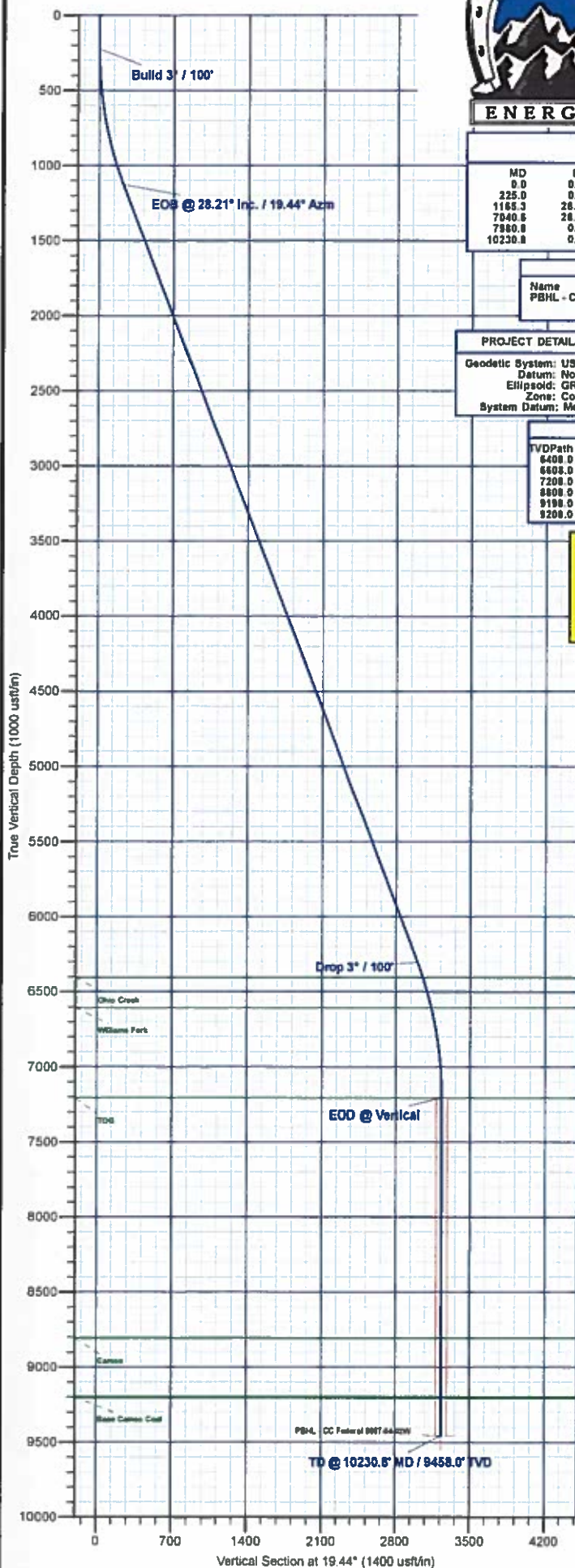




Project: Garfield County, CO  
 Site: CC 604-12-13 Pad  
 Well: CC Federal 0697-04-02W  
 Wellbore: A-10  
 Design: Design #1  
 Latitude: 39.553342  
 Longitude: -108.233305  
 Ground Level: 8529.0  
 WELL @ 8559.0usft (H&P #522)



#### SECTION DETAILS

MD	Inc	Azi	TVD	+N-S	+E-W	Diag	TFace	Vsect	Annotation
0.0	0.00	0.00	0.0	0.0	0.0	0.00	0.00	0.0	Build 3° / 100'
225.0	0.00	0.00	225.0	0.0	0.0	0.00	0.00	0.0	EOB @ 28.21° Inc. / 19.44° Azm
1165.3	28.21	19.44	1127.8	213.9	75.5	3.00	19.44	226.8	Drop 3° / 100'
7040.6	28.21	19.44	6305.2	2832.7	999.8	0.00	0.00	3004.0	EOO @ Vertical
7980.8	0.00	0.00	7208.0	3046.6	1075.3	3.00	180.00	3230.8	TD @ 10230.8' MD / 9458.0' TVD
10230.8	0.00	0.00	9458.0	3046.6	1075.3	0.00	0.00	3230.8	

#### DESIGN TARGET DETAILS

Name	TVD	+N-S	+E-W	Northing	Easting	Latitude	Longitude
PSHL - CC Federal 0697-04-02W	9458.0	3046.6	1075.3	1641039.48	2230571.20	39.551706	-108.229491

#### PROJECT DETAILS: Garfield County, CO

Geodetic System: US State Plane 1983  
 Datum: North American Datum 1983  
 Ellipsoid: GRS 1980  
 Zone: Colorado Central Zone  
 System Datum: Mean Sea Level

#### WELL DETAILS: CC Federal 0697-04-02W

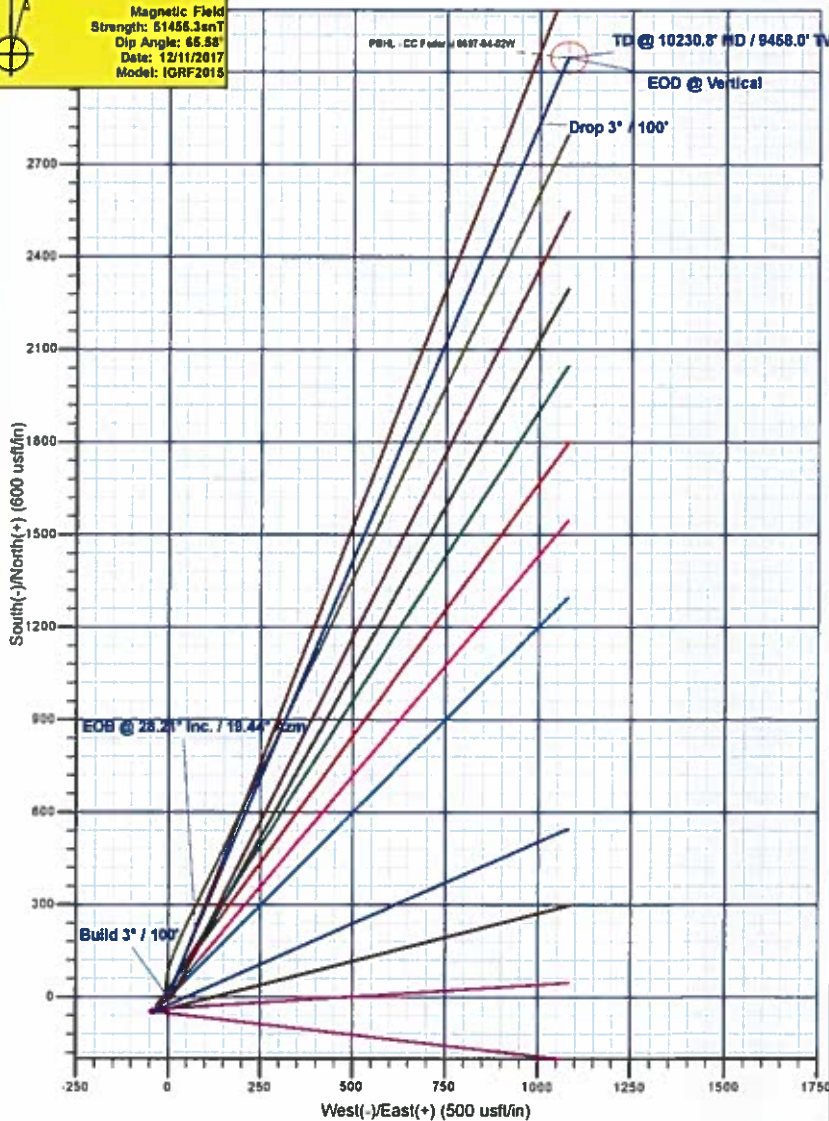
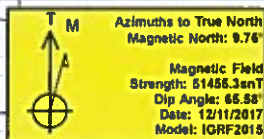
+N-S	+E-W	Northing	Easting	Latitude	Longitude
0.0	0.0	1638026.63	2229404.73	39.553342	-108.233305

#### FORMATION TOP DETAILS

TVDPath	MDPath	Formation
6498.0	7165.4	Ohio Creek
6603.0	7370.5	Williams Fork
7208.0	7980.8	TOG
8608.0	9569.5	Cameo
9198.0	9970.5	Base Cameo Coal
9208.0	9980.8	Rollins

#### REFERENCE INFORMATION

Co-ordinate (N/E) Reference: Well CC Federal 0697-04-02W, True North  
 Vertical (TVD) Reference: WELL @ 8559.0usft (H&P #522)  
 Section (VS) Reference: Slot - (0.0N, 0.0E)  
 Measured Depth Reference: WELL @ 8559.0usft (H&P #522)  
 Calculation Method: Minimum Curvature





# **Laramie Energy, LLC**

**Garfield County, CO**

**CC 604-12-13 Pad**

**CC Federal 0697-04-02W**

**A-10**

**Plan: Design #1**

## **QES Well Planning Report**

**12 December, 2017**





# Well Planning Report



<b>Database:</b>	EDM 5000.1 Single User Db	<b>Local Co-ordinate Reference:</b>	Well CC Federal 0697-04-02W
<b>Company:</b>	Laramie Energy, LLC	<b>TVD Reference:</b>	WELL @ 8559.0usft (H&P #522)
<b>Project:</b>	Garfield County, CO	<b>MD Reference:</b>	WELL @ 8559.0usft (H&P #522)
<b>Site:</b>	CC 604-12-13 Pad	<b>North Reference:</b>	True
<b>Well:</b>	CC Federal 0697-04-02W	<b>Survey Calculation Method:</b>	Minimum Curvature
<b>Wellbore:</b>	A-10		
<b>Design:</b>	Design #1		

<b>Project</b>	Garfield County, CO		
<b>Map System:</b>	US State Plane 1983	<b>System Datum:</b>	Mean Sea Level
<b>Geo Datum:</b>	North American Datum 1983		
<b>Map Zone:</b>	Colorado Central Zone		

<b>Site</b>	CC 604-12-13 Pad			
<b>Site Position:</b>		<b>Northing:</b>	1,638,031.56 usft	<b>Latitude:</b> 39.553356
<b>From:</b>	Lat/Long	<b>Easting:</b>	2,229,410.52 usft	<b>Longitude:</b> -108.233285
<b>Position Uncertainty:</b>	0.0 usft	<b>Slot Radius:</b>	13-3/16 "	<b>Grid Convergence:</b> -1.72 °

<b>Well</b>	CC Federal 0697-04-02W			
<b>Well Position</b>	+N/-S	-5.1 usft	<b>Northing:</b>	1,638,026.62 usft
	+E/-W	-5.6 usft	<b>Easting:</b>	2,229,404.73 usft
<b>Position Uncertainty</b>	0.0 usft		<b>Wellhead Elevation:</b>	<b>Ground Level:</b> 8,529.0 usft

<b>Wellbore</b>	A-10				
<b>Magnetics</b>	<b>Model Name</b>	<b>Sample Date</b>	<b>Declination (°)</b>	<b>Dip Angle (°)</b>	<b>Field Strength (nT)</b>
	IGRF2015	12/11/2017	9.76	65.58	51,455.25704111

<b>Design</b>	Design #1			
<b>Audit Notes:</b>				
<b>Version:</b>	<b>Phase:</b>	PLAN	<b>Tie On Depth:</b>	0.0
<b>Vertical Section:</b>	<b>Depth From (TVD) (usft)</b>	<b>+N/-S (usft)</b>	<b>+E/-W (usft)</b>	<b>Direction (°)</b>
	0.0	0.0	0.0	19.44

<b>Plan Sections</b>										
Measured Depth (usft)	Inclination (°)	Azimuth (°)	Vertical Depth (usft)	+N/-S (usft)	+E/-W (usft)	Dogleg Rate (°/100usft)	Build Rate (°/100usft)	Turn Rate (°/100usft)	TFO (°)	Target
0.0	0.00	0.00	0.0	0.0	0.0	0.00	0.00	0.00	0.00	
225.0	0.00	0.00	225.0	0.0	0.0	0.00	0.00	0.00	0.00	
1,165.3	28.21	19.44	1,127.8	213.9	75.5	3.00	3.00	0.00	19.44	
7,040.6	28.21	19.44	6,305.2	2,832.7	999.8	0.00	0.00	0.00	0.00	
7,980.8	0.00	0.00	7,208.0	3,046.6	1,075.3	3.00	-3.00	0.00	180.00	
10,230.8	0.00	0.00	9,458.0	3,046.6	1,075.3	0.00	0.00	0.00	0.00	PBHL - CC Federal 04



# Well Planning Report



<b>Database:</b>	EDM 5000.1 Single User Db	<b>Local Co-ordinate Reference:</b>	Well CC Federal 0697-04-02W
<b>Company:</b>	Laramie Energy, LLC	<b>TVD Reference:</b>	WELL @ 8559 0usft (H&P #522)
<b>Project:</b>	Garfield County, CO	<b>MD Reference:</b>	WELL @ 8559 0usft (H&P #522)
<b>Site:</b>	CC 604-12-13 Pad	<b>North Reference:</b>	True
<b>Well:</b>	CC Federal 0697-04-02W	<b>Survey Calculation Method:</b>	Minimum Curvature
<b>Wellbore:</b>	A-10		
<b>Design:</b>	Design #1		

## Planned Survey

Measured Depth (usft)	Inclination (°)	Azimuth (°)	Vertical Depth (usft)	+N/-S (usft)	+E/-W (usft)	Vertical Section (usft)	Dogleg Rate (°/100usft)	Build Rate (°/100usft)	Turn Rate (°/100usft)
0.0	0.00	0.00	0.0	0.0	0.0	0.0	0.00	0.00	0.00
100.0	0.00	0.00	100.0	0.0	0.0	0.0	0.00	0.00	0.00
200.0	0.00	0.00	200.0	0.0	0.0	0.0	0.00	0.00	0.00
<b>Build 3° / 100'</b>									
225.0	0.00	0.00	225.0	0.0	0.0	0.0	0.00	0.00	0.00
300.0	2.25	19.44	300.0	1.4	0.5	1.5	3.00	3.00	0.00
400.0	5.25	19.44	399.8	7.6	2.7	8.0	3.00	3.00	0.00
500.0	8.25	19.44	499.1	18.6	6.6	19.8	3.00	3.00	0.00
600.0	11.25	19.44	597.6	34.6	12.2	36.7	3.00	3.00	0.00
700.0	14.25	19.44	695.1	55.4	19.6	58.8	3.00	3.00	0.00
800.0	17.25	19.44	791.4	81.0	28.6	85.9	3.00	3.00	0.00
900.0	20.25	19.44	886.0	111.3	39.3	118.0	3.00	3.00	0.00
1,000.0	23.25	19.44	978.9	146.3	51.6	155.1	3.00	3.00	0.00
1,100.0	26.25	19.44	1,069.7	185.7	65.6	197.0	3.00	3.00	0.00
<b>EOB @ 28.21° Inc. / 19.44° Azm</b>									
1,165.3	28.21	19.44	1,127.8	213.9	75.5	226.8	3.00	3.00	0.00
1,200.0	28.21	19.44	1,158.3	229.4	81.0	243.2	0.00	0.00	0.00
1,300.0	28.21	19.44	1,246.5	273.9	96.7	290.5	0.00	0.00	0.00
1,400.0	28.21	19.44	1,334.6	318.5	112.4	337.8	0.00	0.00	0.00
1,500.0	28.21	19.44	1,422.7	363.1	128.2	385.0	0.00	0.00	0.00
1,600.0	28.21	19.44	1,510.8	407.7	143.9	432.3	0.00	0.00	0.00
1,700.0	28.21	19.44	1,599.0	452.2	159.6	479.6	0.00	0.00	0.00
1,800.0	28.21	19.44	1,687.1	496.8	175.4	526.8	0.00	0.00	0.00
1,900.0	28.21	19.44	1,775.2	541.4	191.1	574.1	0.00	0.00	0.00
2,000.0	28.21	19.44	1,863.3	586.0	206.8	621.4	0.00	0.00	0.00
2,100.0	28.21	19.44	1,951.5	630.5	222.5	668.7	0.00	0.00	0.00
2,200.0	28.21	19.44	2,039.6	675.1	238.3	715.9	0.00	0.00	0.00
2,300.0	28.21	19.44	2,127.7	719.7	254.0	763.2	0.00	0.00	0.00
2,400.0	28.21	19.44	2,215.8	764.2	269.7	810.5	0.00	0.00	0.00
2,500.0	28.21	19.44	2,304.0	808.8	285.5	857.7	0.00	0.00	0.00
<b>9 5/8"</b>									
2,530.0	28.21	19.44	2,330.4	822.2	290.2	871.9	0.00	0.00	0.00
2,600.0	28.21	19.44	2,392.1	853.4	301.2	905.0	0.00	0.00	0.00
2,700.0	28.21	19.44	2,480.2	898.0	316.9	952.3	0.00	0.00	0.00
2,800.0	28.21	19.44	2,568.3	942.5	332.7	999.5	0.00	0.00	0.00
2,900.0	28.21	19.44	2,656.4	987.1	348.4	1,046.8	0.00	0.00	0.00
3,000.0	28.21	19.44	2,744.6	1,031.7	364.1	1,094.1	0.00	0.00	0.00
3,100.0	28.21	19.44	2,832.7	1,076.3	379.9	1,141.3	0.00	0.00	0.00
3,200.0	28.21	19.44	2,820.8	1,120.8	395.6	1,188.6	0.00	0.00	0.00
3,300.0	28.21	19.44	3,008.9	1,165.4	411.3	1,235.9	0.00	0.00	0.00
3,400.0	28.21	19.44	3,097.1	1,210.0	427.1	1,283.1	0.00	0.00	0.00
3,500.0	28.21	19.44	3,185.2	1,254.6	442.8	1,330.4	0.00	0.00	0.00
3,600.0	28.21	19.44	3,273.3	1,299.1	458.5	1,377.7	0.00	0.00	0.00
3,700.0	28.21	19.44	3,361.4	1,343.7	474.3	1,424.9	0.00	0.00	0.00
3,800.0	28.21	19.44	3,449.6	1,388.3	490.0	1,472.2	0.00	0.00	0.00
3,900.0	28.21	19.44	3,537.7	1,432.8	505.7	1,519.5	0.00	0.00	0.00
4,000.0	28.21	19.44	3,625.8	1,477.4	521.5	1,566.7	0.00	0.00	0.00
4,100.0	28.21	19.44	3,713.9	1,522.0	537.2	1,614.0	0.00	0.00	0.00
4,200.0	28.21	19.44	3,802.0	1,566.6	552.9	1,661.3	0.00	0.00	0.00
4,300.0	28.21	19.44	3,890.2	1,611.1	568.7	1,708.5	0.00	0.00	0.00
4,400.0	28.21	19.44	3,978.3	1,655.7	584.4	1,755.8	0.00	0.00	0.00
4,500.0	28.21	19.44	4,066.4	1,700.3	600.1	1,803.1	0.00	0.00	0.00
4,600.0	28.21	19.44	4,154.5	1,744.9	615.9	1,850.4	0.00	0.00	0.00



# Well Planning Report



<b>Database:</b>	EDM 5000 1 Single User Db	<b>Local Co-ordinate Reference:</b>	Well CC Federal 0697-04-02W
<b>Company:</b>	Laramie Energy, LLC	<b>TVD Reference:</b>	WELL @ 8559.0usft (H&P #522)
<b>Project:</b>	Garfield County, CO	<b>MD Reference:</b>	WELL @ 8559.0usft (H&P #522)
<b>Site:</b>	CC 604-12-13 Pad	<b>North Reference:</b>	True
<b>Well:</b>	CC Federal 0697-04-02W	<b>Survey Calculation Method:</b>	Minimum Curvature
<b>Wellbore:</b>	A-10		
<b>Design:</b>	Design #1		

## Planned Survey

Measured Depth (usft)	Inclination (°)	Azimuth (°)	Vertical Depth (usft)	+N/-S (usft)	+E/-W (usft)	Vertical Section (usft)	Dogleg Rate (°/100usft)	Build Rate (°/100usft)	Turn Rate (°/100usft)
4,700.0	28.21	19.44	4,242.7	1,789.4	631.6	1,897.6	0.00	0.00	0.00
4,800.0	28.21	19.44	4,330.8	1,834.0	647.3	1,944.9	0.00	0.00	0.00
4,900.0	28.21	19.44	4,418.9	1,878.6	663.1	1,992.2	0.00	0.00	0.00
5,000.0	28.21	19.44	4,507.0	1,923.1	678.8	2,039.4	0.00	0.00	0.00
5,100.0	28.21	19.44	4,595.2	1,967.7	694.5	2,086.7	0.00	0.00	0.00
5,200.0	28.21	19.44	4,683.3	2,012.3	710.3	2,134.0	0.00	0.00	0.00
5,300.0	28.21	19.44	4,771.4	2,056.9	726.0	2,181.2	0.00	0.00	0.00
5,400.0	28.21	19.44	4,859.5	2,101.4	741.7	2,228.5	0.00	0.00	0.00
5,500.0	28.21	19.44	4,947.7	2,146.0	757.4	2,275.8	0.00	0.00	0.00
5,600.0	28.21	19.44	5,035.8	2,190.6	773.2	2,323.0	0.00	0.00	0.00
5,700.0	28.21	19.44	5,123.9	2,235.2	788.9	2,370.3	0.00	0.00	0.00
5,800.0	28.21	19.44	5,212.0	2,279.7	804.6	2,417.6	0.00	0.00	0.00
5,900.0	28.21	19.44	5,300.1	2,324.3	820.4	2,464.8	0.00	0.00	0.00
6,000.0	28.21	19.44	5,388.3	2,368.9	836.1	2,512.1	0.00	0.00	0.00
6,100.0	28.21	19.44	5,476.4	2,413.5	851.8	2,559.4	0.00	0.00	0.00
6,200.0	28.21	19.44	5,564.5	2,458.0	867.6	2,606.6	0.00	0.00	0.00
6,300.0	28.21	19.44	5,652.6	2,502.6	883.3	2,653.9	0.00	0.00	0.00
6,400.0	28.21	19.44	5,740.8	2,547.2	899.0	2,701.2	0.00	0.00	0.00
6,500.0	28.21	19.44	5,828.9	2,591.7	914.8	2,748.4	0.00	0.00	0.00
6,600.0	28.21	19.44	5,917.0	2,636.3	930.5	2,795.7	0.00	0.00	0.00
6,700.0	28.21	19.44	6,005.1	2,680.9	946.2	2,843.0	0.00	0.00	0.00
6,800.0	28.21	19.44	6,093.3	2,725.5	962.0	2,890.2	0.00	0.00	0.00
6,900.0	28.21	19.44	6,181.4	2,770.0	977.7	2,937.5	0.00	0.00	0.00
7,000.0	28.21	19.44	6,269.5	2,814.6	993.4	2,984.8	0.00	0.00	0.00
<b>Drop 3" / 100'</b>									
7,040.6	28.21	19.44	6,305.2	2,832.7	999.8	3,004.0	0.00	0.00	0.00
7,100.0	28.43	19.44	6,358.1	2,858.4	1,008.9	3,031.2	3.00	-3.00	0.00
<b>Ohio Creek</b>									
7,155.4	24.76	19.44	6,408.0	2,881.0	1,016.9	3,055.2	3.00	-3.00	0.00
7,200.0	23.43	19.44	6,448.7	2,898.1	1,022.9	3,073.4	3.00	-3.00	0.00
7,300.0	20.43	19.44	6,541.5	2,933.4	1,035.3	3,110.7	3.00	-3.00	0.00
<b>Williams Fork</b>									
7,370.5	18.31	19.44	6,608.0	2,955.4	1,043.1	3,134.1	3.00	-3.00	0.00
7,400.0	17.43	19.44	6,636.1	2,963.9	1,046.1	3,143.1	3.00	-3.00	0.00
7,500.0	14.43	19.44	6,732.2	2,989.8	1,055.3	3,170.6	3.00	-3.00	0.00
7,600.0	11.43	19.44	6,829.7	3,010.9	1,062.7	3,192.9	3.00	-3.00	0.00
7,700.0	8.43	19.44	6,928.2	3,027.1	1,068.4	3,210.2	3.00	-3.00	0.00
7,800.0	5.43	19.44	7,027.4	3,038.5	1,072.5	3,222.2	3.00	-3.00	0.00
7,900.0	2.43	19.44	7,127.2	3,045.0	1,074.7	3,229.1	3.00	-3.00	0.00
<b>EOD @ Vertical - TOG</b>									
7,980.8	0.00	0.00	7,208.0	3,046.6	1,075.3	3,230.8	3.00	-3.00	0.00
8,000.0	0.00	0.00	7,227.2	3,046.6	1,075.3	3,230.8	0.00	0.00	0.00
8,100.0	0.00	0.00	7,327.2	3,046.6	1,075.3	3,230.8	0.00	0.00	0.00
8,200.0	0.00	0.00	7,427.2	3,046.6	1,075.3	3,230.8	0.00	0.00	0.00
8,300.0	0.00	0.00	7,527.2	3,046.6	1,075.3	3,230.8	0.00	0.00	0.00
8,400.0	0.00	0.00	7,627.2	3,046.6	1,075.3	3,230.8	0.00	0.00	0.00
8,500.0	0.00	0.00	7,727.2	3,046.6	1,075.3	3,230.8	0.00	0.00	0.00
8,600.0	0.00	0.00	7,827.2	3,046.6	1,075.3	3,230.8	0.00	0.00	0.00
8,700.0	0.00	0.00	7,927.2	3,046.6	1,075.3	3,230.8	0.00	0.00	0.00
8,800.0	0.00	0.00	8,027.2	3,046.6	1,075.3	3,230.8	0.00	0.00	0.00
8,900.0	0.00	0.00	8,127.2	3,046.6	1,075.3	3,230.8	0.00	0.00	0.00
9,000.0	0.00	0.00	8,227.2	3,046.6	1,075.3	3,230.8	0.00	0.00	0.00
9,100.0	0.00	0.00	8,327.2	3,046.6	1,075.3	3,230.8	0.00	0.00	0.00
9,200.0	0.00	0.00	8,427.2	3,046.6	1,075.3	3,230.8	0.00	0.00	0.00



## Well Planning Report



Database:	EDM 5000 1 Single User Db	Local Co-ordinate Reference:	Well CC Federal 0697-04-02W
Company:	Laramie Energy, LLC	TVD Reference:	WELL @ 8559.0usft (H&P #522)
Project:	Garfield County, CO	MD Reference:	WELL @ 8559.0usft (H&P #522)
Site:	CC 604-12-13 Pad	North Reference:	True
Well:	CC Federal 0697-04-02W	Survey Calculation Method:	Minimum Curvature
Wellbore:	A-10		
Design:	Design #1		

## Planned Survey

Measured Depth (usft)	Inclination (°)	Azimuth (°)	Vertical Depth (usft)	+N/-S (usft)	+E/-W (usft)	Vertical Section (usft)	Dogleg Rate (°/100usft)	Build Rate (°/100usft)	Turn Rate (°/100usft)
9,300.0	0.00	0.00	8,527.2	3,046.6	1,075.3	3,230.8	0.00	0.00	0.00
9,400.0	0.00	0.00	8,627.2	3,046.6	1,075.3	3,230.8	0.00	0.00	0.00
9,500.0	0.00	0.00	8,727.2	3,046.6	1,075.3	3,230.8	0.00	0.00	0.00
<b>Cameo</b>									
9,580.8	0.00	0.00	8,808.0	3,046.6	1,075.3	3,230.8	0.00	0.00	0.00
9,600.0	0.00	0.00	8,827.2	3,046.6	1,075.3	3,230.8	0.00	0.00	0.00
9,700.0	0.00	0.00	8,927.2	3,046.6	1,075.3	3,230.8	0.00	0.00	0.00
9,800.0	0.00	0.00	9,027.2	3,046.6	1,075.3	3,230.8	0.00	0.00	0.00
9,900.0	0.00	0.00	9,127.2	3,046.6	1,075.3	3,230.8	0.00	0.00	0.00
<b>Base Cameo Coal</b>									
9,970.8	0.00	0.00	9,198.0	3,046.6	1,075.3	3,230.8	0.00	0.00	0.00
<b>Rollins</b>									
9,980.8	0.00	0.00	9,208.0	3,046.6	1,075.3	3,230.8	0.00	0.00	0.00
10,000.0	0.00	0.00	9,227.2	3,046.6	1,075.3	3,230.8	0.00	0.00	0.00
10,100.0	0.00	0.00	9,327.2	3,046.6	1,075.3	3,230.8	0.00	0.00	0.00
10,200.0	0.00	0.00	9,427.2	3,046.6	1,075.3	3,230.8	0.00	0.00	0.00
<b>TD @ 10230.8' MD / 9458.0' TVD</b>									
10,230.8	0.00	0.00	9,458.0	3,046.6	1,075.3	3,230.8	0.00	0.00	0.00

## Design Targets

Target Name	Dip Angle (°)	Dip Dir. (°)	TVD (usft)	+N/-S (usft)	+E/-W (usft)	Northing (usft)	Easting (usft)	Latitude	Longitude
- hit/miss target									
- Shape									
PBHL - CC Federal 0697	0.00	0.00	9,458.0	3,046.6	1,075.3	1,641,039.48	2,230,571.20	39.561706	-108.229491
- plan hits target center									
- Circle (radius 50.0)									

## Casing Points

Measured Depth (usft)	Vertical Depth (usft)	Name	Casing Diameter (")	Hole Diameter (")
2,530.0	2,330.4	9 5/8"	9-5/8	14-3/4

## Formations

Measured Depth (usft)	Vertical Depth (usft)	Name	Lithology	Dip (°)	Dip Direction (°)
7,155.4	6,408.0	Ohio Creek			
7,370.5	6,608.0	Williams Fork			
7,980.8	7,208.0	TOG			
9,580.8	8,808.0	Cameo			
9,970.8	9,198.0	Base Cameo Coal			
9,980.8	9,208.0	Rollins			



# Well Planning Report



<b>Database:</b>	EDM 5000.1 Single User Db	<b>Local Co-ordinate Reference:</b>	Well CC Federal 0697-04-02W
<b>Company:</b>	Laramie Energy, LLC	<b>TVD Reference:</b>	WELL @ 8559 0usft (H&P #522)
<b>Project:</b>	Garfield County, CO	<b>MD Reference:</b>	WELL @ 8559 0usft (H&P #522)
<b>Site:</b>	CC 604-12-13 Pad	<b>North Reference:</b>	True
<b>Well:</b>	CC Federal 0697-04-02W	<b>Survey Calculation Method:</b>	Minimum Curvature
<b>Wellbore:</b>	A-10		
<b>Design:</b>	Design #1		

## Plan Annotations

Measured Depth (usft)	Vertical Depth (usft)	Local Coordinates		Comment
		+N/-S (usft)	+E/-W (usft)	
225.0	225.0	0.0	0.0	Build 3" / 100'
1,165.3	1,127.8	213.9	75.5	EOB @ 28.21° Inc. / 19.44° Azm
7,040.6	6,305.2	2,832.7	999.8	Drop 3" / 100'
7,980.8	7,208.0	3,046.6	1,075.3	EOD @ Vertical
10,230.8	9,458.0	3,046.6	1,075.3	TD @ 10230.8' MD / 9458.0' TVD