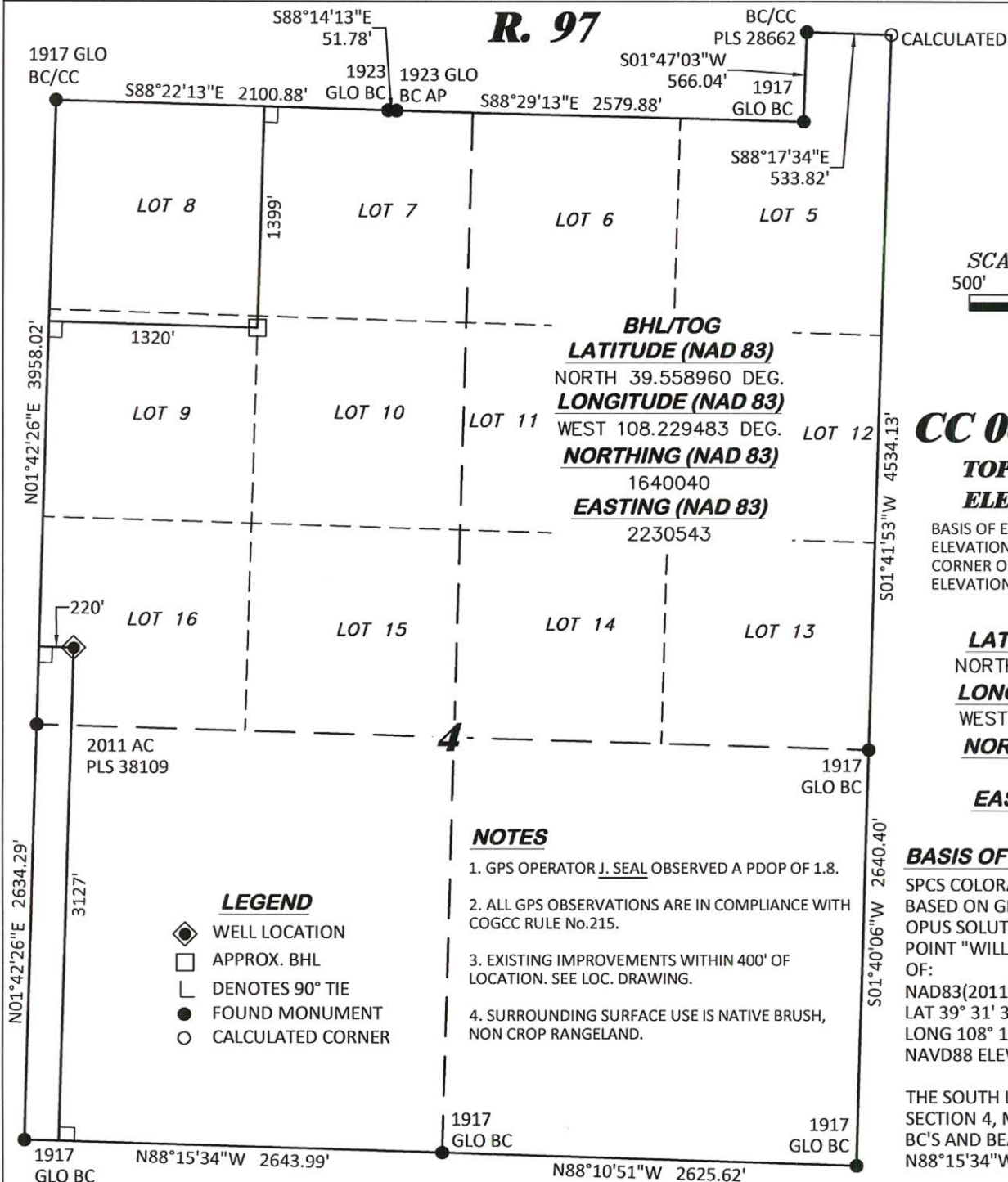


R. 97

GRID NORTH
SCALE 1" = 1000'
500' 0 1000'

T. 6 S.**CC 0697-04-06W**

**TOP OF CONCRETE
ELEVATION: 8528.8'**

BASIS OF ELEVATION: USGS SPOT
ELEVATION LOCATED AT THE SE
CORNER OF SECTION 4, T6S, R97W
ELEVATION: 8387'

SHL
LATITUDE (NAD 83)
NORTH 39.553285 DEG.
LONGITUDE (NAD 83)
WEST 108.233381 DEG.
NORTHING (NAD 83)
1638006.52
EASTING (NAD 83)
2229382.72

BASIS OF BEARING/DATUM
SPCS COLORADO CENTRAL NAD 27
BASED ON GPS OBSERVATIONS AND
OPUS SOLUTION ON DRG CONTROL
POINT "WILLIAMS" HAVING A POSITION
OF:
NAD83(2011)
LAT 39° 31' 35.18" NORTH
LONG 108° 12' 16.79" WEST
NAVD88 ELEVATION: 8618.14'

THE SOUTH LINE OF THE SW¼ OF
SECTION 4, MONUMENTED BY BLM
BC'S AND BEARING
N88°15'34"W.

LEGEND

- ◆ WELL LOCATION
- APPROX. BHL
- └ DENOTES 90° TIE
- FOUND MONUMENT
- CALCULATED CORNER

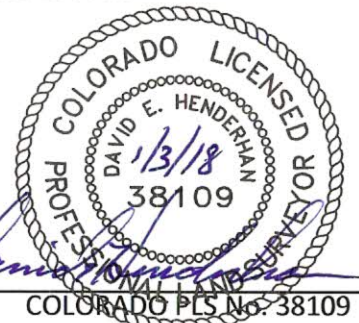
NOTES

1. GPS OPERATOR J. SEAL OBSERVED A PDOP OF 1.8.
2. ALL GPS OBSERVATIONS ARE IN COMPLIANCE WITH COGCC RULE No.215.
3. EXISTING IMPROVEMENTS WITHIN 400' OF LOCATION. SEE LOC. DRAWING.
4. SURROUNDING SURFACE USE IS NATIVE BRUSH, NON CROP RANGELAND.

SURVEYOR'S STATEMENT

I, DAVID E. HENDERHAN, AN EMPLOYEE AND AGENT ON BEHALF OF D.R. GRIFFIN & ASSOCIATES, INC. STATE THE PLAT HEREON IS A CORRECT REPRESENTATION OF A SURVEY MADE UNDER MY SUPERVISION ON THE 13th DAY OF JANUARY, 2012 OF THE SHOWN CC 0697-04-06W AS-DRILLED CONDUCTOR.

Notice: In accordance with Colorado State Law, any legal action based upon any defect in this survey plat must commence within three (3) years after first discovery of such defect. In no event, may any action based upon any defect in this survey plat be commenced more than ten (10) years from the date of certification shown hereon.

CC 604-12-13 ANNEX PAD

DRG **RIFFIN & ASSOCIATES, INC.**
(307) 362-5028 1414 ELK ST., ROCK SPRINGS, WY 82901

**PLAT OF AS-DRILLED CONDUCTOR
IN LOT 16, SECTION 4, FOR
LARAMIE ENERGY, LLC.**

DRAWN: 12/26/2017 - DEH

SCALE: 1" = 1000'

REVISED: N/A -

DRG JOB No. 21376

A6-04-06W

**3127' F/SL, & 220' F/WL, SECTION 4,
T. 6 S., R. 97, 6TH P.M.,
GARFIELD COUNTY, COLORADO**