

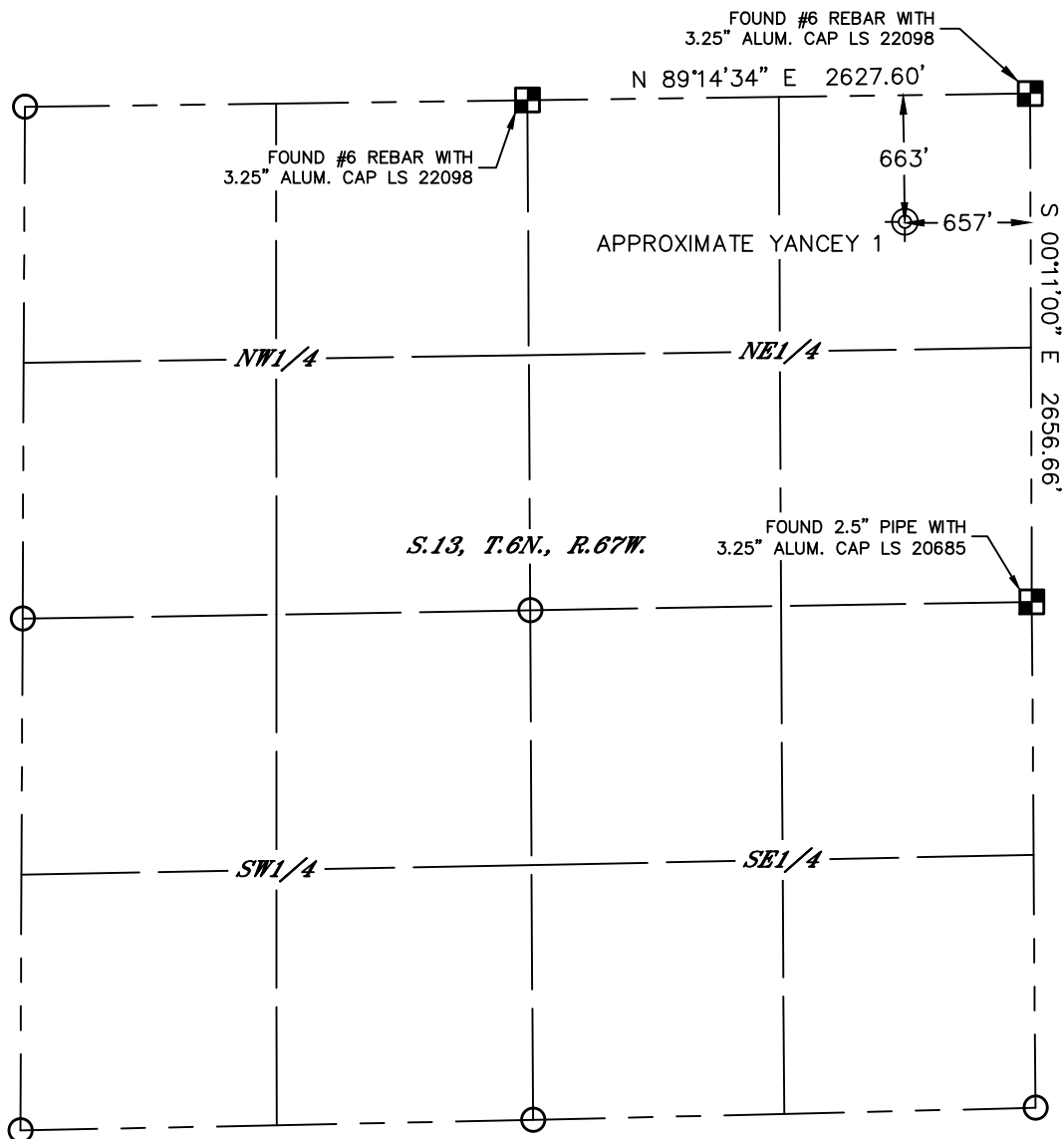


Lat40°, Inc. 6250 W. 10th Street, Unit 2, Greeley, CO 970-515-5294

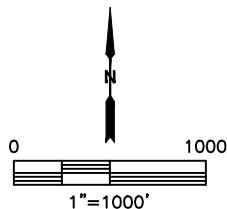
PLUGGED & ABANDONED WELL EXHIBIT

YANCEY 1

SECTION: 13
TOWNSHIP: 6N
RANGE: 67W
6TH. P.M.
WELD COUNTY, CO



CLIENT: SRC ENERGY					LANDMAN: CORY SHEAHEN				
INSTRUMENT OPERATOR: SCOTT SHERARD					SURVEY DATE: 1/25/2018		SURFACE USE: CROP LAND		
SHL FOOTAGE			SHL LAT °	SHL LONG °	SHL PDOP	SHL ELEV (FT.)	SHL 1/4/1/4	SHL S-T-R	
663	FNL	657	FEL	40.49254	-104.83473	2.2	4867	NENE	13-6-67
DESCRIPTION: FOUND STRONG METAL DETECTOR RING AT NOTED POSITION. THIS WAS AMONG OTHER SOFTER RINGS IN THE AREA. SET AN ORANGE LATH WITH FLAGGING AT APPROXIMATE LOCATION OF YANCEY 1 P&A WELL.									

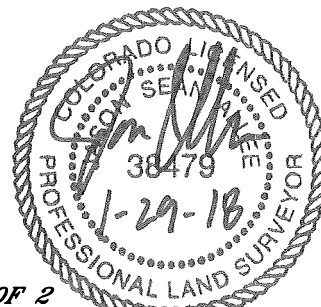


LEGEND

- = ALIQUOT MONUMENT AS DESCRIBED
- = CALCULATED POSITION
- ⊗ = ABANDONED WELL

NOTE:

- 1) Bearings shown are Grid Bearings of the Colorado State Plane Coordinate System, North Zone, North American Datum 1983. The lineal dimensions as contained herein are based upon the "U.S. Survey Foot."
- 2) Distances to section lines measured at 90 degrees from said section lines.
- 3) Ground elevations are based on an observed GPS elevation (NAVD 1988 DATUM).
- 4) Latitude and Longitude shown are (NAD 83 DATUM).
- 5) This map does not represent a boundary survey.



SHEET 1 OF 2

Jason S. Allee—On behalf of Lat40°, Inc.
Colorado Licensed Professional
Land Surveyor No. 38479
DATE: 01/29/2018
PROJECT#: 2018012



Lat40°, Inc. 6250 W. 10th Street, Unit 2, Greeley, CO 970-515-5294

PLUGGED & ABANDONED WELL EXHIBIT

YANCEY 1

SECTION: 13
TOWNSHIP: 6N
RANGE: 67W
6TH. P.M.
WELD COUNTY, CO
DATE: 1/25/2018



VIEW NORTH



VIEW WEST



VIEW EAST



VIEW SOUTH