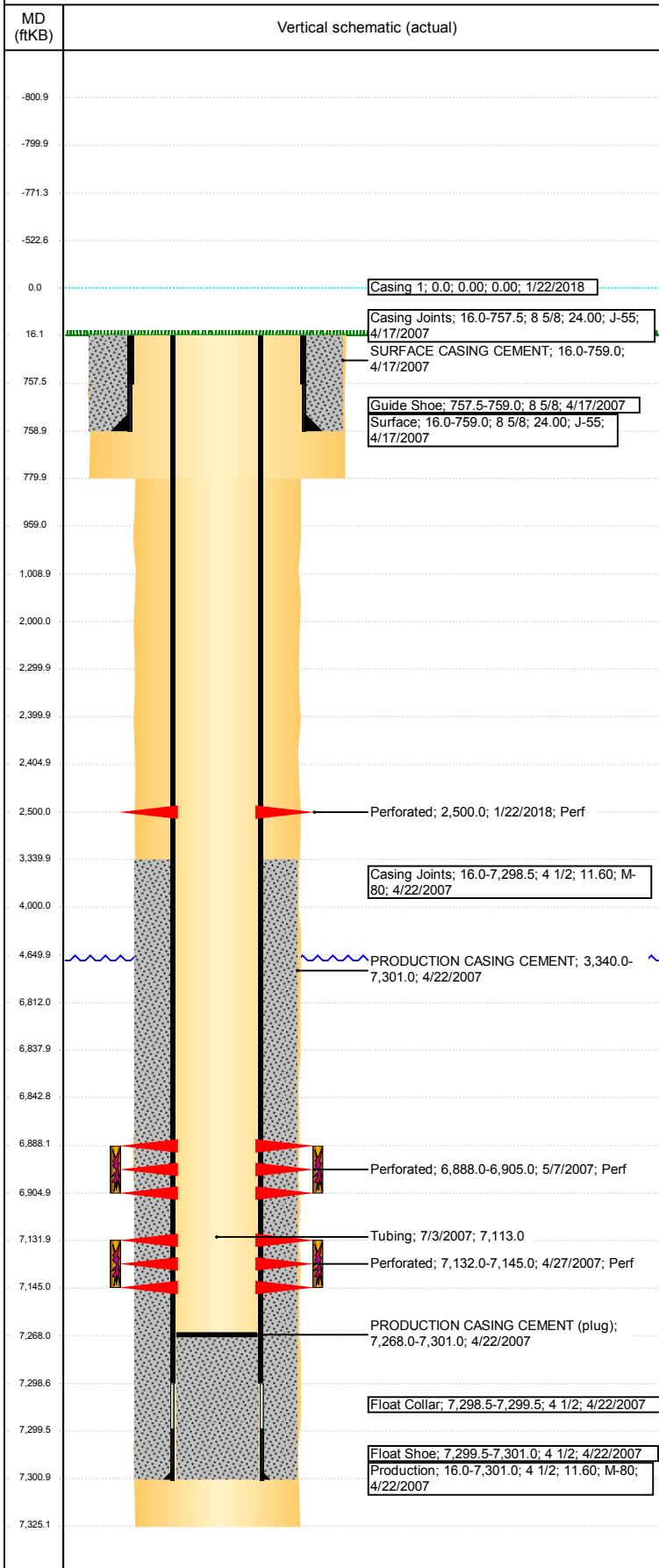


Well Name: MOSER H26-24

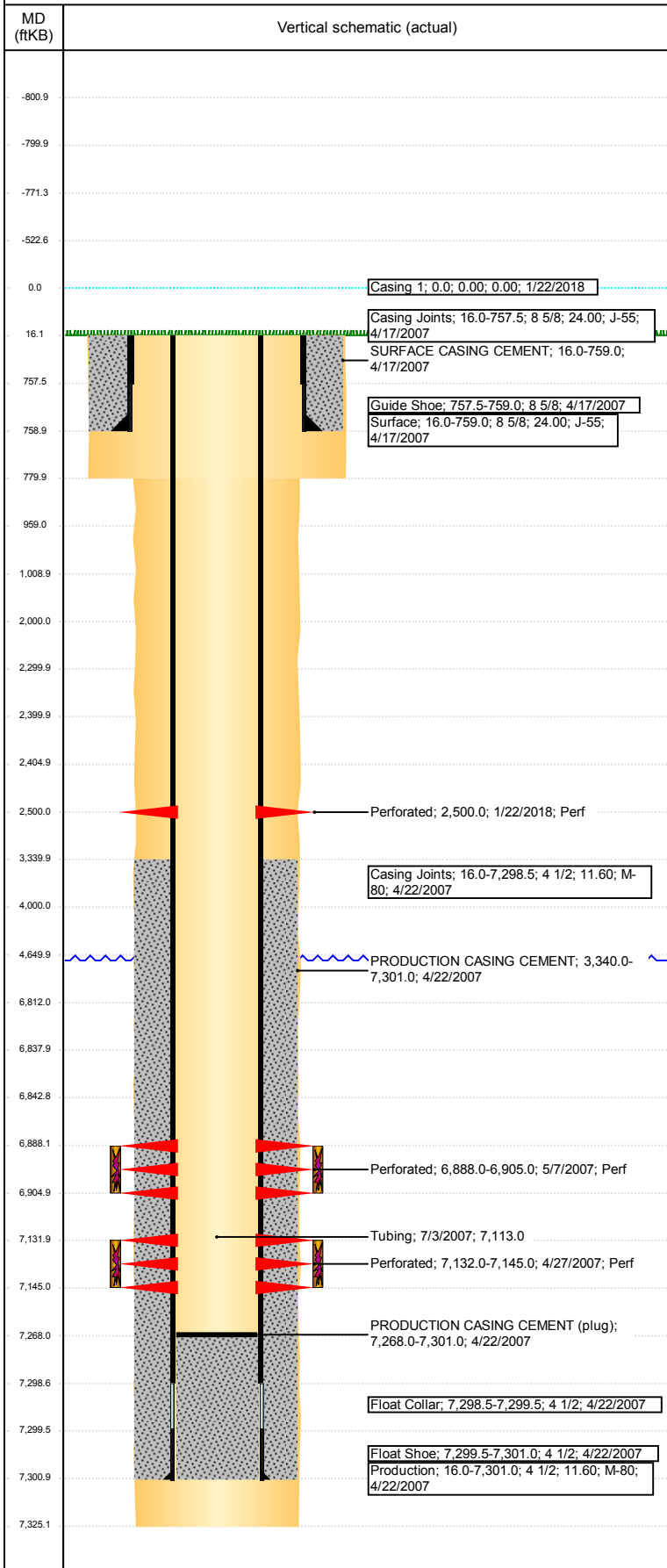
VERTICAL - ORIGINAL HOLE, 1/29/2018 1:29:07 PM



Well Header						
API 05-123-24869	Business Unit DJ BASIN		District 15		Well Config VERTICAL	
Original KB Elevation (ft) 4,868	KB - GL / MSL (ftKB) 16.00		Spud Date 4/16/2007		P & A Date	
Comment						
Directions To Well						
Congressional Location						
Quarter 3 NE	Quarter 4 SW	Section 26	Township 3	Twnshp N/S Dir N	Range 65	Range E/W Dir W
Bottom Hole Location						
North-South Distance (ft)		From N or S Line		East-West Distance (ft)		From E or W Line
Plug Back Total Depths						
Date	Depth (ftKB)	Method		Com		
4/22/2007	7,283.0	CASING TALLY		FLOAT COLLAR		
4/27/2007	7,268.0	CASED HOLE LOG		DEPTH LOGGER ON CBL		
Wellbore Sections						
Section Des		Size (in)		Act Top, MD (ftKB)		Act Btm, MD (ftKB)
SURFACE		12 1/4		16		780
PRODUCTION		7 7/8		780		7,325
Zone Statuses						
Zone Name	Status Date	Status	Fluid Type	Job	Prod Method	
NIOBRARA	6/5/2007	PR	Water	DRILLING - OR...	Flowing	
NIOBRARA	2/23/2010	PR				
CODELL	6/5/2007	PR	Water	DRILLING - OR...	Flowing	
CODELL	2/23/2010	PR				
CODELL	5/9/2017	SI				
Casing Strings						
<des>, <depth>ftKB						
Casing Description		Run Date	OD (in)	Wt/Len (l...	Grade	Top, MD (ft... MD (ftKB)
		1/22/2018				
Surface, 759.0ftKB						
Casing Description		Run Date	OD (in)	Wt/Len (l...	Grade	Top, MD (ft... MD (ftKB)
Surface		4/17/2007	8 5/8	24.00	J-55	16.0 759.0
Production, 7,301.0ftKB						
Casing Description		Run Date	OD (in)	Wt/Len (l...	Grade	Top, MD (ft... MD (ftKB)
Production		4/22/2007	4 1/2	11.60	M-80	16.0 7,301.0
Cement						
Description				Top Depth (ftKB)		Bottom Depth (ftKB)
SURFACE CASING CEMENT				16.0		759.0
Description				Top Depth (ftKB)		Bottom Depth (ftKB)
PRODUCTION CASING CEMENT				3,340.0		7,301.0
Description				Top Depth (ftKB)		Bottom Depth (ftKB)
Dump Bail				6,812.0		6,838.0
Description				Top Depth (ftKB)		Bottom Depth (ftKB)
Balance Plug				4,000.0		4,650.0
Description				Top Depth (ftKB)		Bottom Depth (ftKB)
Balance Plug				2,300.0		2,400.0
Description				Top Depth (ftKB)		Bottom Depth (ftKB)
Balance Plug				2,405.0		2,500.0
Description				Top Depth (ftKB)		Bottom Depth (ftKB)
Cement Squeeze				2,000.0		2,500.0
Description				Top Depth (ftKB)		Bottom Depth (ftKB)
Balance Plug				959.0		1,009.0
Description				Top Depth (ftKB)		Bottom Depth (ftKB)
Balance Plug				759.0		959.0
Description				Top Depth (ftKB)		Bottom Depth (ftKB)
Balance Plug				16.0		759.0
Tubing Strings						
Tubing Description		Run Date	String...	ID (in)	Wt (lb/ft)	Grade
Tubing		7/3/2007				
Tubing Components						
Item Des		OD (in)	Wt (lb/ft)	Grade	Jts	Len (ft)
		2 3/8	4.70	J55	230	
						7,113.0
Other In Hole						
Run Date		Des			OD (in)	Top (ftKB)
1/22/2018		Cast Iron Bridge Plug			4	6,838.0
1/22/2018		Cement Retainer			4	2,400.0
						6,843.0
						2,405.0

Well Name: MOSER H26-24

VERTICAL - ORIGINAL HOLE, 1/29/2018 1:29:08 PM



Logs			
Date	Type	Top, MD (ftKB)	Btm, MD (ftKB)
4/21/2007	COMPENSATED DENSITY	2,890.0	7,305.0
4/21/2007	INDUCTION	760.0	7,325.0
4/27/2007	CEMENT BOND	3,200.0	7,266.0
10/27/2014	GYRO	10.0	7,000.0

Perforation Data					
Linked Zone	Bnch/St g	Sum of Entered Shot Total	Top (ftKB)	Btm (ftKB)	Date
		0	2,500.00	2,500.00	1/22/2018
		68	6,888.00	6,905.00	5/7/2007
		52	7,132.00	7,145.00	4/27/2007

Total (Sum)	120			
--------------------	------------	--	--	--

Stimulation Intervals		
Start Date	Primary Job Type	
5/7/2007	DRILLING - ORIGINAL	
Technical Result	Tech Result Details	Tech Result Note

Comment		
Start Date	Primary Job Type	
5/7/2007	DRILLING - ORIGINAL	
Technical Result	Tech Result Details	Tech Result Note
Comment		