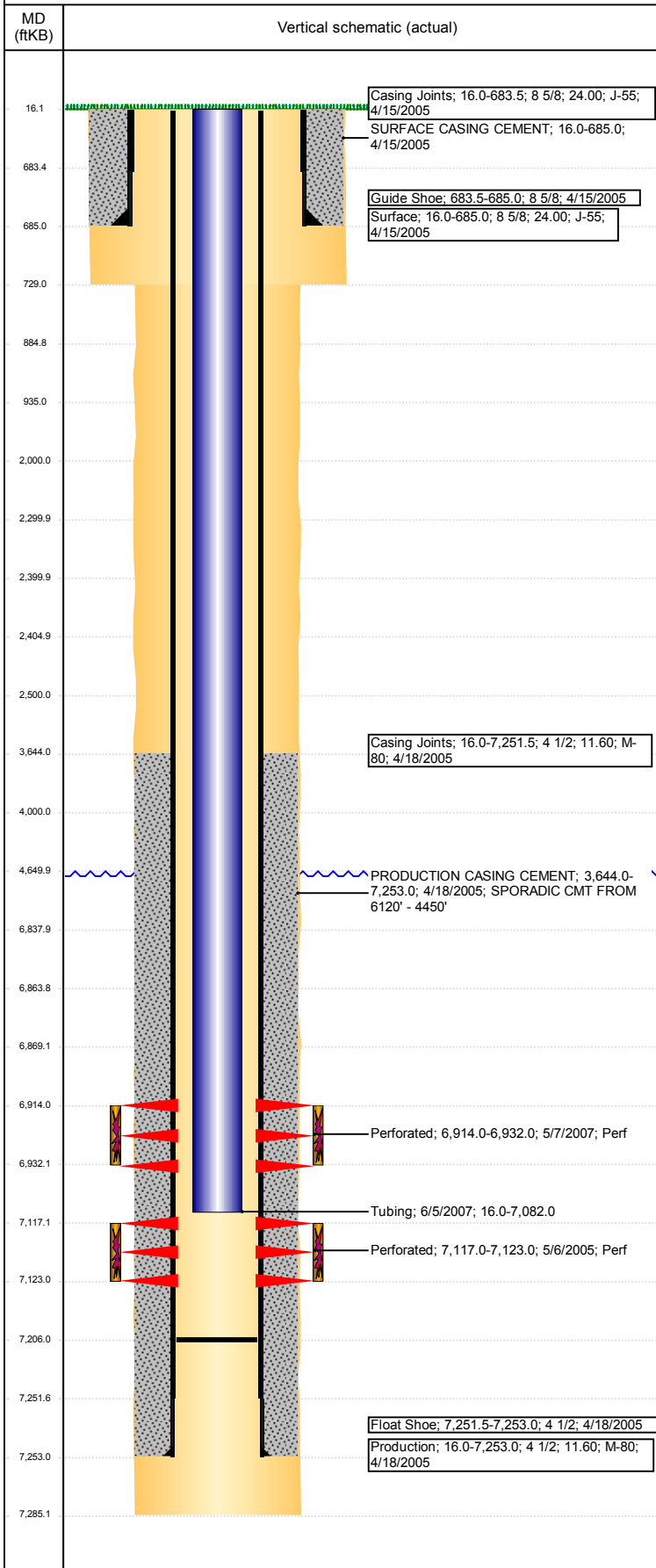


# Wellbore Schematic Input Report

**Well Name: MOSER H26-13**

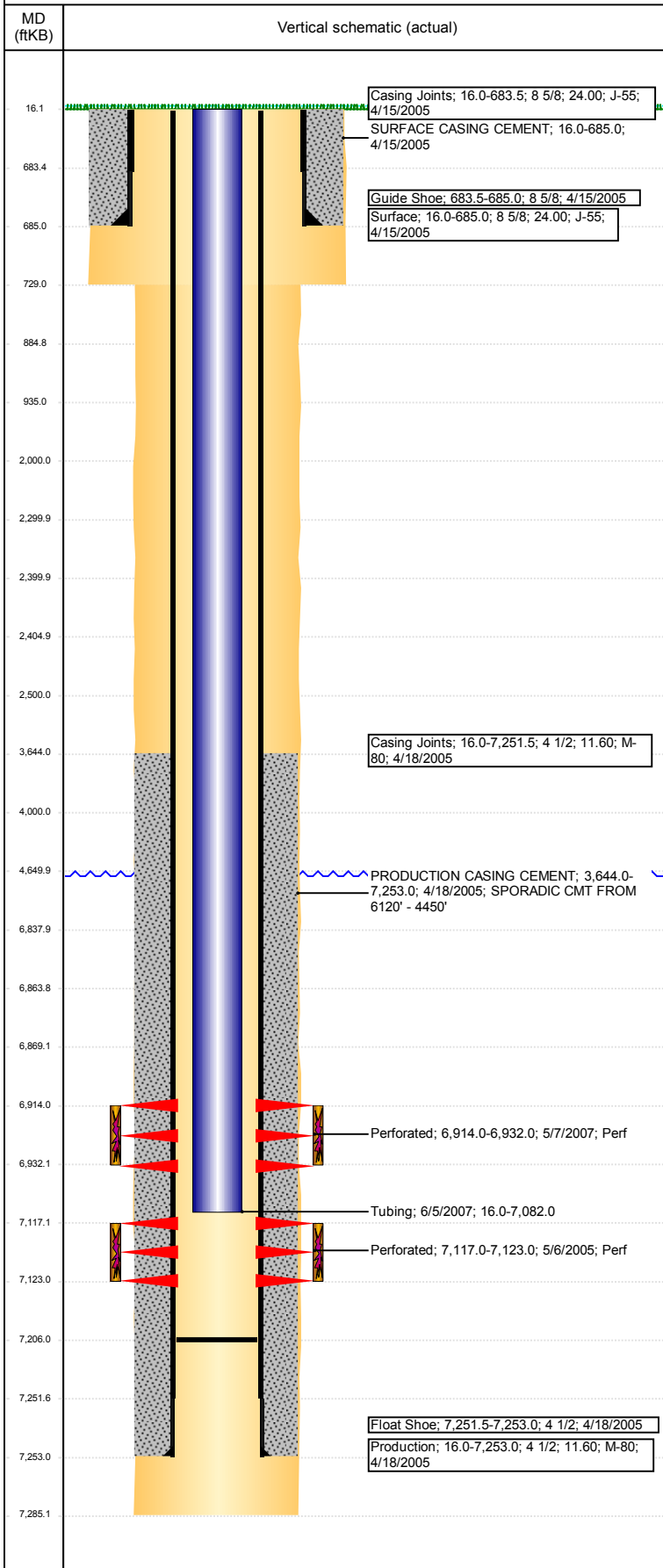
VERTICAL - ORIGINAL HOLE, 1/29/2018 1:18:14 PM



Well Header						
API 05-123-22418	Business Unit DJ BASIN		District 15		Well Config VERTICAL	
Original KB Elevation (ft) 4,846	KB - GL / MSL (ftKB) 16.00		Spud Date 4/15/2005		P & A Date	
Comment						
Directions To Well						
Congressional Location						
Quarter 3 SW	Quarter 4 SW	Section 26	Township 3	Twnshp N/S Dir N	Range 65	Range E/W Dir W
Bottom Hole Location						
North-South Distance (ft)		From N or S Line		East-West Distance (ft)		From E or W Line
Plug Back Total Depths						
Date	Depth (ftKB)	Method		Com		
4/18/2005	7,241.0	CASING TALLY		FLOAT SHOE W/ LATCH DOWN BAFFLE		
5/6/2005	7,205.0	CASED HOLE LOG		DEPTH LOGGER ON CBL		
5/4/2007	7,240.0	TAG		CLEAN OUT		
5/7/2007	6,983.0	TAG		CIBP		
6/4/2007	7,206.0	TAG		CHASED CIPF		
Wellbore Sections						
Section Des		Size (in)		Act Top, MD (ftKB)		Act Btm, MD (ftKB)
SURFACE		12 1/4		16		729
PRODUCTION		7 7/8		729		7,285
Zone Statuses						
Zone Name	Status Date	Status	Fluid Type	Job	Prod Method	
NIOBRARA	5/24/2007	PR		RECOMPLETI...		
CODELL	5/24/2005	PR		DRILLING/CO...		
Casing Strings						
Surface, 685.0ftKB						
Casing Description	Run Date	OD (in)	Wt/Len (l...	Grade	Top, MD (ft...	MD (ftKB)
Surface	4/15/2005	8 5/8	24.00	J-55	16.0	685.0
Production, 7,253.0ftKB						
Casing Description	Run Date	OD (in)	Wt/Len (l...	Grade	Top, MD (ft...	MD (ftKB)
Production	4/18/2005	4 1/2	11.60	M-80	16.0	7,253.0
Cement						
Description				Top Depth (ftKB)	Bottom Depth (ftKB)	
SURFACE CASING CEMENT				16.0	685.0	
Description				Top Depth (ftKB)	Bottom Depth (ftKB)	
PRODUCTION CASING CEMENT				3,644.0	7,253.0	
Description				Top Depth (ftKB)	Bottom Depth (ftKB)	
Dump Bail				6,838.0	6,864.0	
Description				Top Depth (ftKB)	Bottom Depth (ftKB)	
Balance Plug				4,000.0	4,650.0	
Description				Top Depth (ftKB)	Bottom Depth (ftKB)	
Balance Plug				2,405.0	2,500.0	
Description				Top Depth (ftKB)	Bottom Depth (ftKB)	
Balance Plug				2,300.0	2,400.0	
Description				Top Depth (ftKB)	Bottom Depth (ftKB)	
Cement Squeeze				2,000.0	2,500.0	
Description				Top Depth (ftKB)	Bottom Depth (ftKB)	
Balance Plug				885.0	935.0	
Description				Top Depth (ftKB)	Bottom Depth (ftKB)	
Balance Plug				685.0	885.0	
Description				Top Depth (ftKB)	Bottom Depth (ftKB)	
Balance Plug				16.0	685.0	
Tubing Strings						
Tubing Description	Run Date	String...	ID (in)	Wt (lb/ft)	Grade	Len (ft) Set De...
Tubing	6/5/2007	2 3/8	2.00	4.70	J-55	7,066.00
Tubing Components						
Item Des	OD (in)	Wt (lb/ft)	Grade	Jts	Len (ft)	Btm (ftKB) Btm (TVD) (ftKB)
Tubing	2 3/8	4.70	J-55	216	7,064.00	7,080.0
Seal Nipple	2 3/8				1.00	7,081.0
Notched collar	2 3/8				1.00	7,082.0
Other In Hole						
Run Date	Des			OD (in)	Top (ftKB)	Btm (ftKB)
1/22/2018	Cast Iron Bridge Plug			4	6,864.0	6,869.0

**Well Name: MOSER H26-13**

VERTICAL - ORIGINAL HOLE, 1/29/2018 1:18:15 PM



## Other In Hole

Run Date	Des	OD (in)	Top (ftKB)	Btm (ftKB)
1/22/2018	Cement Retainer	4	2,400.0	2,405.0

## Logs

Date	Type	Top, MD (ftKB)	Btm, MD (ftKB)
4/18/2005	COMPENSATED DENSITY	4,300.0	7,242.0
4/18/2005	INDUCTION	684.0	7,262.0
5/6/2005	CEMENT BOND	3,500.0	7,202.0
11/23/2013	GYRO	16.0	7,000.0

## Perforation Data

Linked Zone	Bnch/St g	Sum of Entered Shot Total	Top (ftKB)	Btm (ftKB)	Date
NIORARA, ORIGINAL HOLE		0	2,500.00	2,500.00	1/22/2018
CODELL, ORIGINAL HOLE		72	6,914.00	6,932.00	5/7/2007
		24	7,117.00	7,123.00	5/6/2005
<b>Total (Sum)</b>		<b>96</b>			

## Stimulation Intervals

Start Date 5/23/2005	Primary Job Type DRILLING/COMPLETION - ORIGINAL	
Technical Result	Tech Result Details	Tech Result Note
Comment		
Start Date 5/22/2007	Primary Job Type RECOMPLETION	
Technical Result	Tech Result Details	Tech Result Note
Comment		