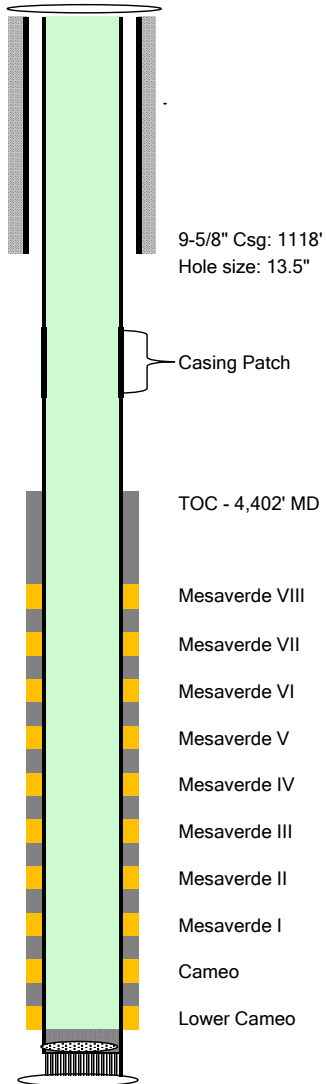


Exploration and Production



Well Name	SR 433-12	
Location	Lat: 39.441131; Long: -107.836646	
Field	Rulison	
County	Garfield, CO	
API	05-045-23456	
KB	24	
Elev	7479	
Spud		
Conductor	80'	
Casing	1,118'	9-5/8" 32.3#
Cement	300 sx	Class G
Casing	9,586'	4-1/2" 11.6# P-110
Cement	1075 sx	Class G
Tubing	N/A	
Formation Tops		
Mesaverde	5,841	
Cameo	8,738	

TOC - 4,402' MD