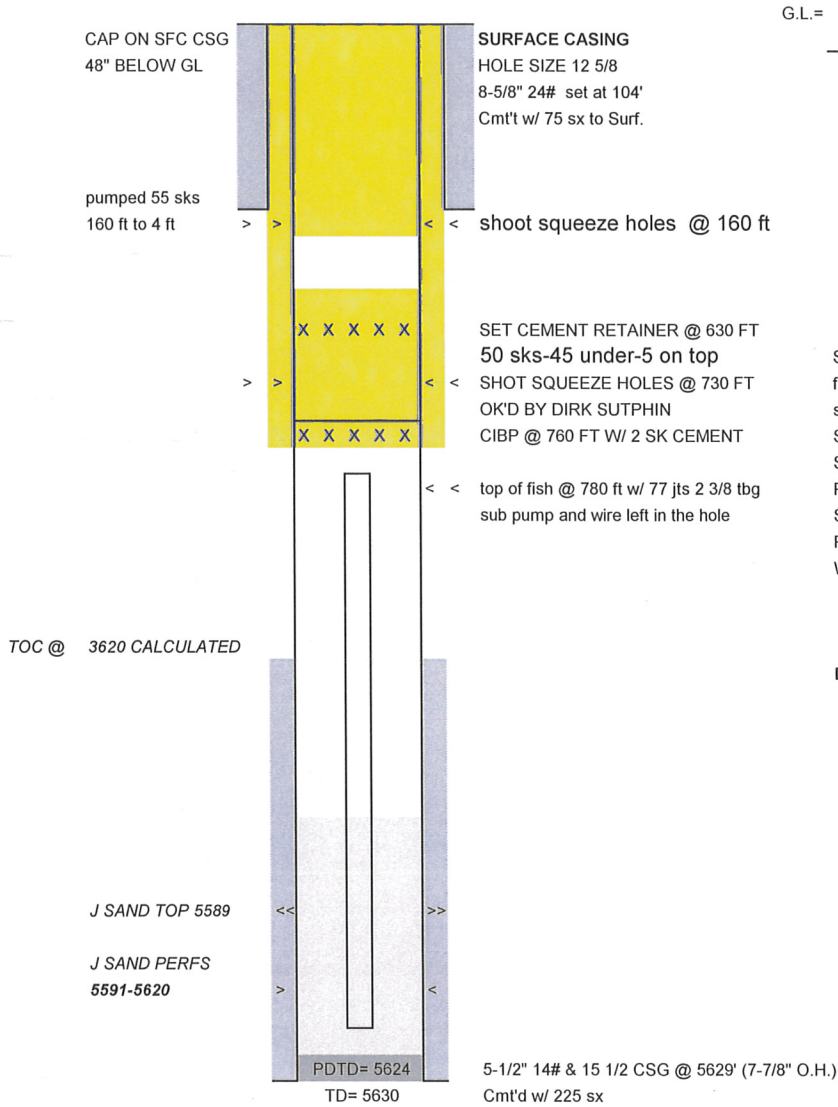


# WELLBORE DIAGRAM AS PLUGGED

Black Raven Energy Inc.  
 HOUGH, RM # A-4  
 NWSW Section 7, Township 1N, Range 57W  
 Footages 1633 FSL 952 FWL  
 County MORGAN: State: COLORADO  
 API :05-087-05362



G.L.= 0  
 0  
 0

| Formation tops |      |
|----------------|------|
| Niobrara       | 4686 |
| Greenhorn      | 5187 |
| D-Sand         | 5525 |
| J-Sand         | 5589 |

## PLUGGING OPERATIONS

Submersible pump & wire and 77 jts 2 3/8" tbg stuck in the hole  
 free point and cut tbg off @ 780 ft  
 set CIBP @ 760 FT W/ 2 SK CEMENT ON TOP  
 SHOOT SQ HOLES @ 730 FT  
 SET CMT RETAINER @ 630 FT  
 PUMP 50 SK CMT W/ 45 UNDER & 5 ON TOP  
 SHOOT SQ HOLES @ 160 FT  
 PUMP 55 SK CMT FROM 160 TO 4 FT  
 Weld on cap @ 4 ft

| Date     | Perforation History | status |
|----------|---------------------|--------|
|          | top                 | btm    |
| 4/2/1954 | 5591                | 5620   |