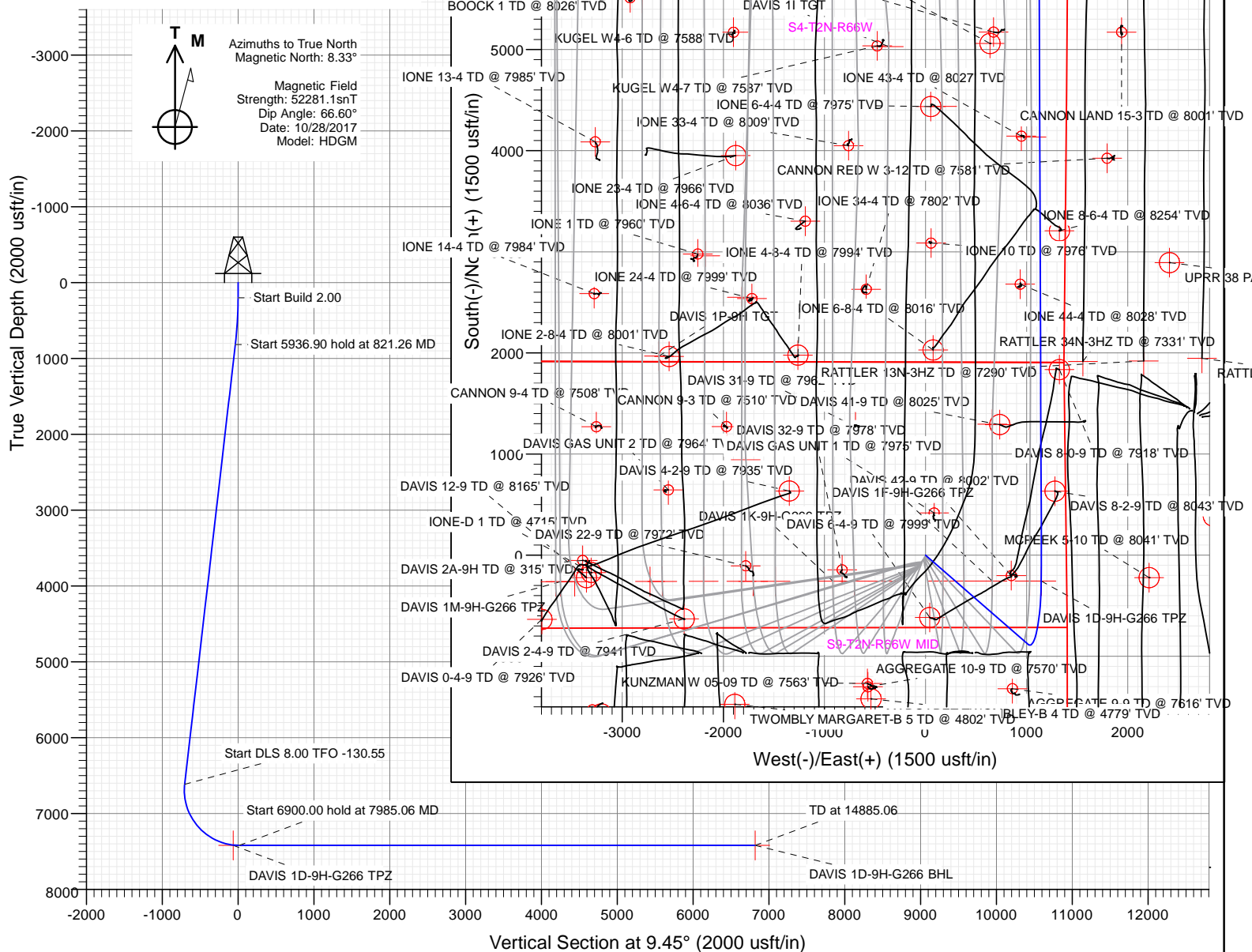




Sec	MD	Inc	Azi	TVD	+N/-S	+E/-W	Dleg	TFace	VSect	Target
1	0.00	0.00	0.00	0.00	0.00	0.00	0.00	0.00	0.00	
2	200.00	0.00	0.00	200.00	0.00	0.00	0.00	0.00	0.00	
3	821.26	12.43	131.01	816.41	-44.03	50.63	2.00	131.01	-35.12	
4	6758.17	12.43	131.01	6614.25	-882.26	1014.57	0.00	0.00	-703.68	
5	7985.06	90.00	359.79	7421.00	-172.81	1145.62	8.00	-130.55	17.66	
6	14885.06	90.00	359.79	7421.00	6727.15	1119.88	0.00	0.00	6819.72	DAVIS 1D-9H-G266 BHL

PLAN #3							
DAVIS 1D-9H-G266							
23 KB @ 4840.0usbt							
Ground Level @ 4917.0							
North American Datum 1983							
Well DAVIS 1D-9H-G266 - Slot DAVIS 1D-9H, True North							
Type TD	Target No Target (Freehand)	Azimuth 9.45	Origin Type	N/S 0.00	E/W 0.00	From TVD 0.00	
Name	TVD	+N-S	E-W	Latitude	Longitude		
DAVIS 1D-9H-G266 BHL	7421.00	6727.15	1119.88	46.173566	-104.773779		
DAVIS 1D-9H-G266 TPZ	7421.00	295.26	11.59	46.183882	-104.759672		

Project: DJ BASIN
Site: S4-T2N-R66W
Well: DAVIS 1D-9H-G266
Wellbore: OH
Design: PLAN #3



WELL DETAILS: DAVIS 1D-9H-G266

4917.00						
+N/-S	+E/-W	Northing	Easting	Latitude	Longitude	
0.00	0.00	1299979.94	3201869.86	40.154583	-104.777786	DAVIS 1D-9H



Crestone Peak Resources

DJ BASIN

S4-T2N-R66W

DAVIS 1D-9H-G266 - Slot DAVIS 1D-9H

OH

Plan: PLAN #3

Standard Planning Report

11 January, 2018

Cathedral Energy Services

Planning Report

Database:	USA EDM 5000 Multi Users DB	Local Co-ordinate Reference:	Well DAVIS 1D-9H-G266 - Slot DAVIS 1D-9H
Company:	Crestone Peak Resources	TVD Reference:	23' KB @ 4940.00usft
Project:	DJ BASIN	MD Reference:	23' KB @ 4940.00usft
Site:	S4-T2N-R66W	North Reference:	True
Well:	DAVIS 1D-9H-G266	Survey Calculation Method:	Minimum Curvature
Wellbore:	OH		
Design:	PLAN #3		

Project	DJ BASIN		
Map System:	US State Plane 1983	System Datum:	Mean Sea Level
Geo Datum:	North American Datum 1983		
Map Zone:	Colorado Northern Zone		

Site		S4-T2N-R66W			
Site Position:		Northing:	1,300,048.95 usft	Latitude:	40.154783
From:	Map	Easting:	3,201,389.75 usft	Longitude:	-104.779502
Position Uncertainty:	0.00 usft	Slot Radius:	13-3/16 "	Grid Convergence:	0.47 °

Well	DAVIS 1D-9H-G266 - Slot DAVIS 1D-9H					
Well Position	+N/-S	-72.90 usft	Northing:	1,299,979.94 usft	Latitude:	40.154583
	+E/-W	479.54 usft	Easting:	3,201,869.86 usft	Longitude:	-104.777786
Position Uncertainty		0.00 usft	Wellhead Elevation:		Ground Level:	4,917.00 usft

Wellbore	OH				
Magnetics	Model Name	Sample Date	Declination (°)	Dip Angle (°)	Field Strength (nT)
	HDGM	10/28/2017	8.33	66.60	52,281.10000000

Design	PLAN #3			
Audit Notes:				
Version:	Phase:	PLAN	Tie On Depth:	0.00
Vertical Section:	Depth From (TVD) (usft)	+N/-S (usft)	+E/-W (usft)	Direction (°)
	0.00	0.00	0.00	9.45

Plan Sections										
Measured Depth (usft)	Inclination (°)	Azimuth (°)	Vertical Depth (usft)	+N/-S (usft)	+E/-W (usft)	Dogleg Rate (°/100usft)	Build Rate (°/100usft)	Turn Rate (°/100usft)	TFO (°)	Target
0.00	0.00	0.00	0.00	0.00	0.00	0.00	0.00	0.00	0.00	
200.00	0.00	0.00	200.00	0.00	0.00	0.00	0.00	0.00	0.00	
821.26	12.43	131.01	816.41	-44.03	50.63	2.00	2.00	0.00	131.01	
6,758.17	12.43	131.01	6,614.25	-882.26	1,014.57	0.00	0.00	0.00	0.00	
7,985.06	90.00	359.79	7,421.00	-172.81	1,145.62	8.00	6.32	-10.70	-130.55	
14,885.06	90.00	359.79	7,421.00	6,727.15	1,119.88	0.00	0.00	0.00	0.00	DAVIS 1D-9H-G266 E

Cathedral Energy Services

Planning Report

Database:	USA EDM 5000 Multi Users DB	Local Co-ordinate Reference:	Well DAVIS 1D-9H-G266 - Slot DAVIS 1D-9H
Company:	Crestone Peak Resources	TVD Reference:	23' KB @ 4940.00usft
Project:	DJ BASIN	MD Reference:	23' KB @ 4940.00usft
Site:	S4-T2N-R66W	North Reference:	True
Well:	DAVIS 1D-9H-G266	Survey Calculation Method:	Minimum Curvature
Wellbore:	OH		
Design:	PLAN #3		

Planned Survey									
Measured Depth (usft)	Inclination (°)	Azimuth (°)	Vertical Depth (usft)	+N/-S (usft)	+E/-W (usft)	Vertical Section (usft)	Dogleg Rate (°/100usft)	Build Rate (°/100usft)	Turn Rate (°/100usft)
0.00	0.00	0.00	0.00	0.00	0.00	0.00	0.00	0.00	0.00
100.00	0.00	0.00	100.00	0.00	0.00	0.00	0.00	0.00	0.00
200.00	0.00	0.00	200.00	0.00	0.00	0.00	0.00	0.00	0.00
300.00	2.00	131.01	299.98	-1.15	1.32	-0.91	2.00	2.00	0.00
400.00	4.00	131.01	399.84	-4.58	5.27	-3.65	2.00	2.00	0.00
500.00	6.00	131.01	499.45	-10.30	11.84	-8.21	2.00	2.00	0.00
600.00	8.00	131.01	598.70	-18.29	21.04	-14.59	2.00	2.00	0.00
700.00	10.00	131.01	697.47	-28.56	32.84	-22.78	2.00	2.00	0.00
800.00	12.00	131.01	795.62	-41.08	47.24	-32.76	2.00	2.00	0.00
821.26	12.43	131.01	816.41	-44.03	50.63	-35.12	2.00	2.00	0.00
900.00	12.43	131.01	893.30	-55.15	63.42	-43.98	0.00	0.00	0.00
1,000.00	12.43	131.01	990.96	-69.27	79.65	-55.25	0.00	0.00	0.00
1,100.00	12.43	131.01	1,088.61	-83.39	95.89	-66.51	0.00	0.00	0.00
1,200.00	12.43	131.01	1,186.27	-97.50	112.13	-77.77	0.00	0.00	0.00
1,300.00	12.43	131.01	1,283.93	-111.62	128.36	-89.03	0.00	0.00	0.00
1,400.00	12.43	131.01	1,381.59	-125.74	144.60	-100.29	0.00	0.00	0.00
1,500.00	12.43	131.01	1,479.24	-139.86	160.84	-111.55	0.00	0.00	0.00
1,600.00	12.43	131.01	1,576.90	-153.98	177.07	-122.81	0.00	0.00	0.00
1,700.00	12.43	131.01	1,674.56	-168.10	193.31	-134.07	0.00	0.00	0.00
1,800.00	12.43	131.01	1,772.22	-182.22	209.54	-145.34	0.00	0.00	0.00
1,900.00	12.43	131.01	1,869.88	-196.34	225.78	-156.60	0.00	0.00	0.00
2,000.00	12.43	131.01	1,967.53	-210.46	242.02	-167.86	0.00	0.00	0.00
2,100.00	12.43	131.01	2,065.19	-224.58	258.25	-179.12	0.00	0.00	0.00
2,200.00	12.43	131.01	2,162.85	-238.69	274.49	-190.38	0.00	0.00	0.00
2,300.00	12.43	131.01	2,260.51	-252.81	290.73	-201.64	0.00	0.00	0.00
2,400.00	12.43	131.01	2,358.16	-266.93	306.96	-212.90	0.00	0.00	0.00
2,500.00	12.43	131.01	2,455.82	-281.05	323.20	-224.16	0.00	0.00	0.00
2,600.00	12.43	131.01	2,553.48	-295.17	339.44	-235.42	0.00	0.00	0.00
2,700.00	12.43	131.01	2,651.14	-309.29	355.67	-246.69	0.00	0.00	0.00
2,800.00	12.43	131.01	2,748.79	-323.41	371.91	-257.95	0.00	0.00	0.00
2,900.00	12.43	131.01	2,846.45	-337.53	388.14	-269.21	0.00	0.00	0.00
3,000.00	12.43	131.01	2,944.11	-351.65	404.38	-280.47	0.00	0.00	0.00
3,100.00	12.43	131.01	3,041.77	-365.77	420.62	-291.73	0.00	0.00	0.00
3,200.00	12.43	131.01	3,139.43	-379.88	436.85	-302.99	0.00	0.00	0.00
3,300.00	12.43	131.01	3,237.08	-394.00	453.09	-314.25	0.00	0.00	0.00
3,400.00	12.43	131.01	3,334.74	-408.12	469.33	-325.51	0.00	0.00	0.00
3,500.00	12.43	131.01	3,432.40	-422.24	485.56	-336.77	0.00	0.00	0.00
3,600.00	12.43	131.01	3,530.06	-436.36	501.80	-348.04	0.00	0.00	0.00
3,700.00	12.43	131.01	3,627.71	-450.48	518.04	-359.30	0.00	0.00	0.00
3,800.00	12.43	131.01	3,725.37	-464.60	534.27	-370.56	0.00	0.00	0.00
3,900.00	12.43	131.01	3,823.03	-478.72	550.51	-381.82	0.00	0.00	0.00
4,000.00	12.43	131.01	3,920.69	-492.84	566.74	-393.08	0.00	0.00	0.00
4,100.00	12.43	131.01	4,018.35	-506.96	582.98	-404.34	0.00	0.00	0.00
4,200.00	12.43	131.01	4,116.00	-521.07	599.22	-415.60	0.00	0.00	0.00
4,300.00	12.43	131.01	4,213.66	-535.19	615.45	-426.86	0.00	0.00	0.00
4,400.00	12.43	131.01	4,311.32	-549.31	631.69	-438.12	0.00	0.00	0.00
4,500.00	12.43	131.01	4,408.98	-563.43	647.93	-449.39	0.00	0.00	0.00
4,600.00	12.43	131.01	4,506.63	-577.55	664.16	-460.65	0.00	0.00	0.00
4,700.00	12.43	131.01	4,604.29	-591.67	680.40	-471.91	0.00	0.00	0.00
4,800.00	12.43	131.01	4,701.95	-605.79	696.64	-483.17	0.00	0.00	0.00
4,900.00	12.43	131.01	4,799.61	-619.91	712.87	-494.43	0.00	0.00	0.00
5,000.00	12.43	131.01	4,897.27	-634.03	729.11	-505.69	0.00	0.00	0.00
5,100.00	12.43	131.01	4,994.92	-648.14	745.34	-516.95	0.00	0.00	0.00
5,200.00	12.43	131.01	5,092.58	-662.26	761.58	-528.21	0.00	0.00	0.00

Cathedral Energy Services

Planning Report

Database:	USA EDM 5000 Multi Users DB	Local Co-ordinate Reference:	Well DAVIS 1D-9H-G266 - Slot DAVIS 1D-9H
Company:	Crestone Peak Resources	TVD Reference:	23' KB @ 4940.00usft
Project:	DJ BASIN	MD Reference:	23' KB @ 4940.00usft
Site:	S4-T2N-R66W	North Reference:	True
Well:	DAVIS 1D-9H-G266	Survey Calculation Method:	Minimum Curvature
Wellbore:	OH		
Design:	PLAN #3		

Planned Survey									
Measured Depth (usft)	Inclination (°)	Azimuth (°)	Vertical Depth (usft)	+N/-S (usft)	+E/-W (usft)	Vertical Section (usft)	Dogleg Rate (°/100usft)	Build Rate (°/100usft)	Turn Rate (°/100usft)
5,300.00	12.43	131.01	5,190.24	-676.38	777.82	-539.47	0.00	0.00	0.00
5,400.00	12.43	131.01	5,287.90	-690.50	794.05	-550.74	0.00	0.00	0.00
5,500.00	12.43	131.01	5,385.55	-704.62	810.29	-562.00	0.00	0.00	0.00
5,600.00	12.43	131.01	5,483.21	-718.74	826.53	-573.26	0.00	0.00	0.00
5,700.00	12.43	131.01	5,580.87	-732.86	842.76	-584.52	0.00	0.00	0.00
5,800.00	12.43	131.01	5,678.53	-746.98	859.00	-595.78	0.00	0.00	0.00
5,900.00	12.43	131.01	5,776.19	-761.10	875.23	-607.04	0.00	0.00	0.00
6,000.00	12.43	131.01	5,873.84	-775.22	891.47	-618.30	0.00	0.00	0.00
6,100.00	12.43	131.01	5,971.50	-789.33	907.71	-629.56	0.00	0.00	0.00
6,200.00	12.43	131.01	6,069.16	-803.45	923.94	-640.82	0.00	0.00	0.00
6,300.00	12.43	131.01	6,166.82	-817.57	940.18	-652.09	0.00	0.00	0.00
6,400.00	12.43	131.01	6,264.47	-831.69	956.42	-663.35	0.00	0.00	0.00
6,500.00	12.43	131.01	6,362.13	-845.81	972.65	-674.61	0.00	0.00	0.00
6,600.00	12.43	131.01	6,459.79	-859.93	988.89	-685.87	0.00	0.00	0.00
6,700.00	12.43	131.01	6,557.45	-874.05	1,005.13	-697.13	0.00	0.00	0.00
6,758.17	12.43	131.01	6,614.25	-882.26	1,014.57	-703.68	0.00	0.00	0.00
6,800.00	10.56	117.00	6,655.25	-886.96	1,021.38	-707.19	8.00	-4.47	-33.50
6,900.00	9.93	70.94	6,753.82	-888.30	1,037.72	-705.83	8.00	-0.62	-46.06
7,000.00	14.59	39.35	6,851.62	-875.72	1,053.88	-690.78	8.00	4.65	-31.59
7,100.00	21.30	24.94	6,946.74	-849.48	1,069.55	-662.31	8.00	6.71	-14.40
7,200.00	28.66	17.44	7,037.35	-810.07	1,084.42	-621.00	8.00	7.36	-7.50
7,300.00	36.27	12.84	7,121.67	-758.26	1,098.20	-567.63	8.00	7.61	-4.60
7,400.00	44.01	9.66	7,198.07	-695.07	1,110.62	-503.26	8.00	7.74	-3.17
7,500.00	51.81	7.28	7,265.05	-621.72	1,121.45	-429.13	8.00	7.80	-2.39
7,600.00	59.65	5.35	7,321.31	-539.64	1,130.47	-346.68	8.00	7.84	-1.92
7,700.00	67.52	3.72	7,365.77	-450.44	1,137.50	-257.53	8.00	7.87	-1.64
7,800.00	75.40	2.26	7,397.54	-355.83	1,142.41	-163.40	8.00	7.88	-1.46
7,900.00	83.29	0.90	7,416.02	-257.67	1,145.11	-66.14	8.00	7.89	-1.36
7,902.71	83.50	0.87	7,416.33	-254.98	1,145.15	-63.47	8.00	7.89	-1.33
DAVIS 1D-9H-G266 TPZ									
7,985.06	90.00	359.79	7,421.00	-172.81	1,145.62	17.66	8.00	7.89	-1.31
8,000.00	90.00	359.79	7,421.00	-157.87	1,145.56	32.39	0.00	0.00	0.00
8,100.00	90.00	359.79	7,421.00	-57.87	1,145.19	130.97	0.00	0.00	0.00
8,200.00	90.00	359.79	7,421.00	42.13	1,144.81	229.55	0.00	0.00	0.00
8,300.00	90.00	359.79	7,421.00	142.13	1,144.44	328.13	0.00	0.00	0.00
8,400.00	90.00	359.79	7,421.00	242.13	1,144.07	426.71	0.00	0.00	0.00
8,500.00	90.00	359.79	7,421.00	342.13	1,143.70	525.29	0.00	0.00	0.00
8,600.00	90.00	359.79	7,421.00	442.12	1,143.32	623.87	0.00	0.00	0.00
8,700.00	90.00	359.79	7,421.00	542.12	1,142.95	722.45	0.00	0.00	0.00
8,800.00	90.00	359.79	7,421.00	642.12	1,142.58	821.03	0.00	0.00	0.00
8,900.00	90.00	359.79	7,421.00	742.12	1,142.20	919.61	0.00	0.00	0.00
9,000.00	90.00	359.79	7,421.00	842.12	1,141.83	1,018.19	0.00	0.00	0.00
9,100.00	90.00	359.79	7,421.00	942.12	1,141.46	1,116.77	0.00	0.00	0.00
9,200.00	90.00	359.79	7,421.00	1,042.12	1,141.09	1,215.35	0.00	0.00	0.00
9,300.00	90.00	359.79	7,421.00	1,142.12	1,140.71	1,313.93	0.00	0.00	0.00
9,400.00	90.00	359.79	7,421.00	1,242.12	1,140.34	1,412.51	0.00	0.00	0.00
9,500.00	90.00	359.79	7,421.00	1,342.12	1,139.97	1,511.10	0.00	0.00	0.00
9,600.00	90.00	359.79	7,421.00	1,442.12	1,139.59	1,609.68	0.00	0.00	0.00
9,700.00	90.00	359.79	7,421.00	1,542.12	1,139.22	1,708.26	0.00	0.00	0.00
9,800.00	90.00	359.79	7,421.00	1,642.12	1,138.85	1,806.84	0.00	0.00	0.00
9,900.00	90.00	359.79	7,421.00	1,742.12	1,138.47	1,905.42	0.00	0.00	0.00
10,000.00	90.00	359.79	7,421.00	1,842.12	1,138.10	2,004.00	0.00	0.00	0.00
10,100.00	90.00	359.79	7,421.00	1,942.11	1,137.73	2,102.58	0.00	0.00	0.00

Cathedral Energy Services

Planning Report

Database:	USA EDM 5000 Multi Users DB	Local Co-ordinate Reference:	Well DAVIS 1D-9H-G266 - Slot DAVIS 1D-9H
Company:	Crestone Peak Resources	TVD Reference:	23' KB @ 4940.00usft
Project:	DJ BASIN	MD Reference:	23' KB @ 4940.00usft
Site:	S4-T2N-R66W	North Reference:	True
Well:	DAVIS 1D-9H-G266	Survey Calculation Method:	Minimum Curvature
Wellbore:	OH		
Design:	PLAN #3		

Planned Survey									
Measured Depth (usft)	Inclination (°)	Azimuth (°)	Vertical Depth (usft)	+N/-S (usft)	+E/-W (usft)	Vertical Section (usft)	Dogleg Rate (°/100usft)	Build Rate (°/100usft)	Turn Rate (°/100usft)
10,200.00	90.00	359.79	7,421.00	2,042.11	1,137.36	2,201.16	0.00	0.00	0.00
10,300.00	90.00	359.79	7,421.00	2,142.11	1,136.98	2,299.74	0.00	0.00	0.00
10,400.00	90.00	359.79	7,421.00	2,242.11	1,136.61	2,398.32	0.00	0.00	0.00
10,500.00	90.00	359.79	7,421.00	2,342.11	1,136.24	2,496.90	0.00	0.00	0.00
10,600.00	90.00	359.79	7,421.00	2,442.11	1,135.86	2,595.48	0.00	0.00	0.00
10,700.00	90.00	359.79	7,421.00	2,542.11	1,135.49	2,694.06	0.00	0.00	0.00
10,800.00	90.00	359.79	7,421.00	2,642.11	1,135.12	2,792.64	0.00	0.00	0.00
10,900.00	90.00	359.79	7,421.00	2,742.11	1,134.74	2,891.22	0.00	0.00	0.00
11,000.00	90.00	359.79	7,421.00	2,842.11	1,134.37	2,989.80	0.00	0.00	0.00
11,100.00	90.00	359.79	7,421.00	2,942.11	1,134.00	3,088.38	0.00	0.00	0.00
11,200.00	90.00	359.79	7,421.00	3,042.11	1,133.63	3,186.97	0.00	0.00	0.00
11,300.00	90.00	359.79	7,421.00	3,142.11	1,133.25	3,285.55	0.00	0.00	0.00
11,400.00	90.00	359.79	7,421.00	3,242.11	1,132.88	3,384.13	0.00	0.00	0.00
11,500.00	90.00	359.79	7,421.00	3,342.10	1,132.51	3,482.71	0.00	0.00	0.00
11,600.00	90.00	359.79	7,421.00	3,442.10	1,132.13	3,581.29	0.00	0.00	0.00
11,700.00	90.00	359.79	7,421.00	3,542.10	1,131.76	3,679.87	0.00	0.00	0.00
11,800.00	90.00	359.79	7,421.00	3,642.10	1,131.39	3,778.45	0.00	0.00	0.00
11,900.00	90.00	359.79	7,421.00	3,742.10	1,131.01	3,877.03	0.00	0.00	0.00
12,000.00	90.00	359.79	7,421.00	3,842.10	1,130.64	3,975.61	0.00	0.00	0.00
12,100.00	90.00	359.79	7,421.00	3,942.10	1,130.27	4,074.19	0.00	0.00	0.00
12,200.00	90.00	359.79	7,421.00	4,042.10	1,129.90	4,172.77	0.00	0.00	0.00
12,300.00	90.00	359.79	7,421.00	4,142.10	1,129.52	4,271.35	0.00	0.00	0.00
12,400.00	90.00	359.79	7,421.00	4,242.10	1,129.15	4,369.93	0.00	0.00	0.00
12,500.00	90.00	359.79	7,421.00	4,342.10	1,128.78	4,468.51	0.00	0.00	0.00
12,600.00	90.00	359.79	7,421.00	4,442.10	1,128.40	4,567.09	0.00	0.00	0.00
12,700.00	90.00	359.79	7,421.00	4,542.10	1,128.03	4,665.67	0.00	0.00	0.00
12,800.00	90.00	359.79	7,421.00	4,642.10	1,127.66	4,764.25	0.00	0.00	0.00
12,900.00	90.00	359.79	7,421.00	4,742.09	1,127.28	4,862.83	0.00	0.00	0.00
13,000.00	90.00	359.79	7,421.00	4,842.09	1,126.91	4,961.42	0.00	0.00	0.00
13,100.00	90.00	359.79	7,421.00	4,942.09	1,126.54	5,060.00	0.00	0.00	0.00
13,200.00	90.00	359.79	7,421.00	5,042.09	1,126.17	5,158.58	0.00	0.00	0.00
13,300.00	90.00	359.79	7,421.00	5,142.09	1,125.79	5,257.16	0.00	0.00	0.00
13,400.00	90.00	359.79	7,421.00	5,242.09	1,125.42	5,355.74	0.00	0.00	0.00
13,500.00	90.00	359.79	7,421.00	5,342.09	1,125.05	5,454.32	0.00	0.00	0.00
13,600.00	90.00	359.79	7,421.00	5,442.09	1,124.67	5,552.90	0.00	0.00	0.00
13,700.00	90.00	359.79	7,421.00	5,542.09	1,124.30	5,651.48	0.00	0.00	0.00
13,800.00	90.00	359.79	7,421.00	5,642.09	1,123.93	5,750.06	0.00	0.00	0.00
13,900.00	90.00	359.79	7,421.00	5,742.09	1,123.55	5,848.64	0.00	0.00	0.00
14,000.00	90.00	359.79	7,421.00	5,842.09	1,123.18	5,947.22	0.00	0.00	0.00
14,100.00	90.00	359.79	7,421.00	5,942.09	1,122.81	6,045.80	0.00	0.00	0.00
14,200.00	90.00	359.79	7,421.00	6,042.09	1,122.44	6,144.38	0.00	0.00	0.00
14,300.00	90.00	359.79	7,421.00	6,142.09	1,122.06	6,242.96	0.00	0.00	0.00
14,400.00	90.00	359.79	7,421.00	6,242.08	1,121.69	6,341.54	0.00	0.00	0.00
14,500.00	90.00	359.79	7,421.00	6,342.08	1,121.32	6,440.12	0.00	0.00	0.00
14,600.00	90.00	359.79	7,421.00	6,442.08	1,120.94	6,538.70	0.00	0.00	0.00
14,700.00	90.00	359.79	7,421.00	6,542.08	1,120.57	6,637.29	0.00	0.00	0.00
14,800.00	90.00	359.79	7,421.00	6,642.08	1,120.20	6,735.87	0.00	0.00	0.00
14,885.06	90.00	359.79	7,421.00	6,727.15	1,119.88	6,819.72	0.00	0.00	0.00
DAVIS 1D-9H-G266 BHL									

Cathedral Energy Services

Planning Report

Database:	USA EDM 5000 Multi Users DB	Local Co-ordinate Reference:	Well DAVIS 1D-9H-G266 - Slot DAVIS 1D-9H
Company:	Crestone Peak Resources	TVD Reference:	23' KB @ 4940.00usft
Project:	DJ BASIN	MD Reference:	23' KB @ 4940.00usft
Site:	S4-T2N-R66W	North Reference:	True
Well:	DAVIS 1D-9H-G266	Survey Calculation Method:	Minimum Curvature
Wellbore:	OH		
Design:	PLAN #3		

Design Targets									
Target Name									
- hit/miss target	Dip Angle	Dip Dir.	TVD	+N/-S	+E/-W	Northing	Easting	Latitude	Longitude
- Shape	(°)	(°)	(usft)	(usft)	(usft)	(usft)	(usft)		
DAVIS 1D-9H-G266 TP2	0.00	0.00	7,421.00	-255.25	1,144.59	1,299,734.02	3,203,016.49	40.153882	-104.773692
- plan misses target center by 4.71usft at 7902.71usft MD (7416.33 TVD, -254.98 N, 1145.15 E)									
- Point									
DAVIS 1D-9H-G266 BHI	0.00	0.00	7,421.00	6,727.15	1,119.88	1,306,715.98	3,202,934.92	40.173050	-104.773779
- plan hits target center									
- Point									