

January 8, 2018

Colorado Oil & Gas Conservation Commission
The Chancery Building
1120 Lincoln Street, Suite 801
Denver, CO 80203

Attn: Mr Matt Lepore, Director

RE: Davis 1P-9H-G266

Davis 1O-9H-G266

<u>Township 2N, Range 66W, 6th P.M.</u>	(Surface Hole Location)
Section 9: 2013' FNL; 1453' FEL	(TPZ Location)
Section 9: 2174' FNL; 1281' FWL	(Bottom Hole Location)
Section 4: 460' FNL; 1256' FWL	
Weld County	

Mr. Lepore,

Crestone Peak Resources ("CPR") is planning to drill the captioned well in accordance with the provisions of COGCC Rule 318A.e(6).

Proposed spacing unit configuration: T2N-R66W Sec 4: W2 Sec 9: NW

Formation(s): Codell
Spacing unit acreage: 480

CPR is not the only owner within the proposed spacing unit, and as such provided notice to the remaining owner(s) within said proposed spacing unit as required under COGCC Rule 318A.e(6). The required thirty (30) day notice period has elapsed absent the receipt by CPR of an objection to said proposal by the owner(s) within the proposed spacing unit for this well.

Attached is a copy of the map illustrating the proposed wellbore spacing unit to assist you in your review and approval of CPR's proposed APD for the captioned well.

Thank you for your time and attention to this matter. Crestone Peak Resources respectfully requests that the COGCC review the enclosed information and approve the Application for Permit to Drill the captioned well.

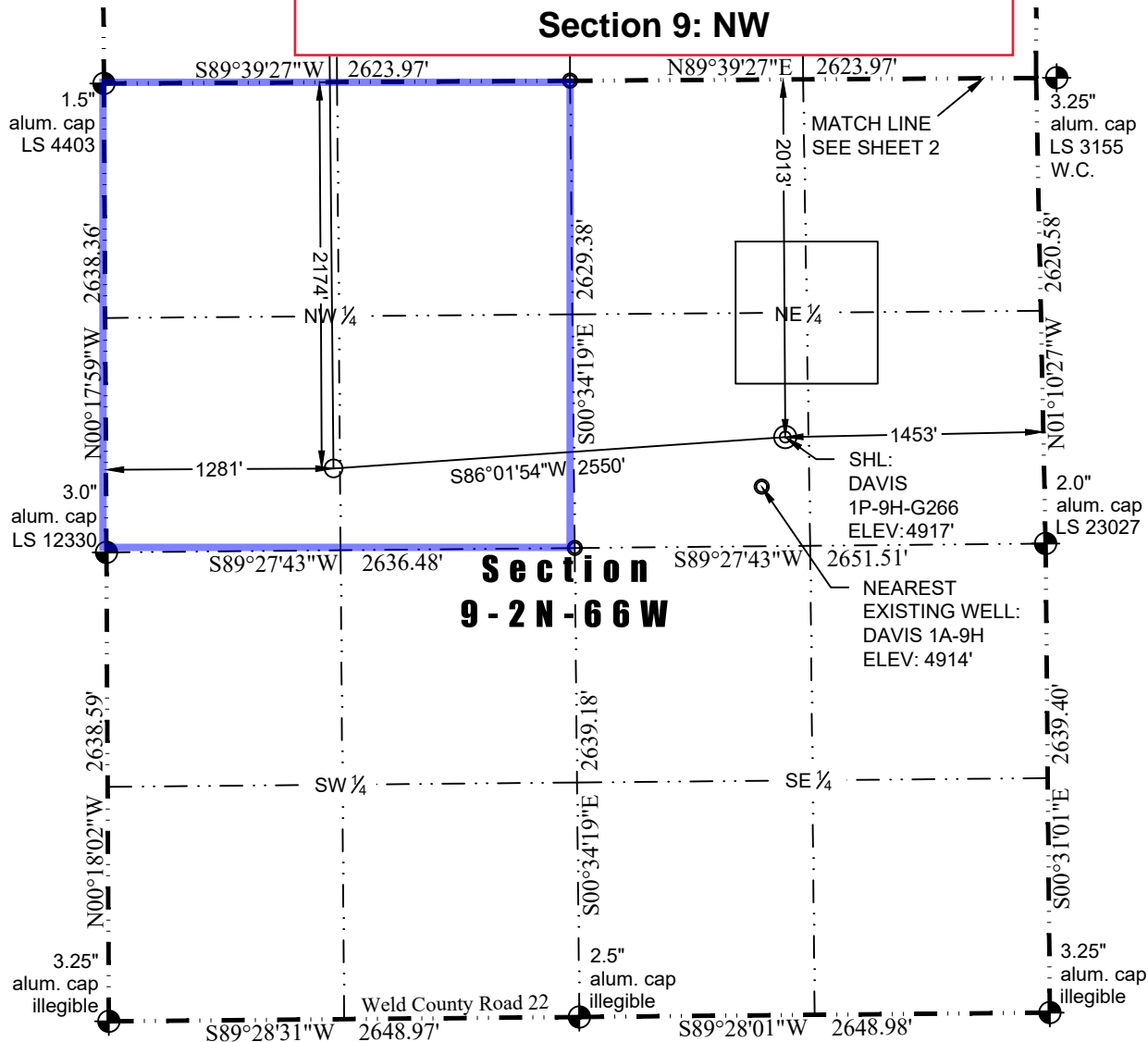
Sincerely,



Toby Sachen
Contract Regulatory Specialist

Davis 1P-9H-G266
T2N-R66W
Section 4: W2
Section 9: NW

Washburn Land Surveying
www.WashburnSurveying.com
970-232-9645



In accordance with a request from Jay Knutson of Crestone Peak Resources, Washburn Land Surveying, LLC has determined the location of the **DAVIS 1P-9H-G266** well site to be SHL: 2013' FNL and 1453' FEL, (TPZ: 2174' FNL and 1281' FWL), (BHL: 460' FNL and 1256' FWL), as measured at ninety (90) degrees from the section lines of Sections 9 and 4, Township 2 North, Range 66 West of the 6th Principal Meridian, Weld County Colorado.

Proposed Surface Hole Data:
Latitude: N 40.154297°
Longitude: W 104.777999°
PDOP: 1.4

Proposed TPZ Data:
Latitude: N 40.153869°
Longitude: W 104.787104°

Proposed Bottom Hole Data:
Latitude: N 40.172955°
Longitude: W 104.787139°

Nearest Cultural Items:
Building: 1067' NE
Building Unit: 1120' E
Above Ground Utility: 687' N
Public Road: 1426' E
Existing Well: 309' SW

Well Window: 301' Outside
Property Line: 613' S
Railroad: +5280'
High Occupancy Building Unit: +5280'
Designated Outside Activity Area: +5280'

LEGEND

- ◆ - Found Survey Monument
- - Calculated Position
- ⊙ - Surface Hole Location (SHL)
- - Top of Producing Zone (TPZ)
- × - Bottom Hole Location (BHL)

I hereby certify that this Location Certificate was prepared by me or under my direct supervision on 12-27-2017 for and on behalf of Crestone Peak Resources, Inc. as a Land Surveyor and Improvement Surveyor, and that it is not to be relied upon for establishment of fences, buildings, or other future improvement lines.

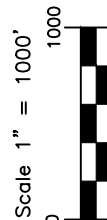
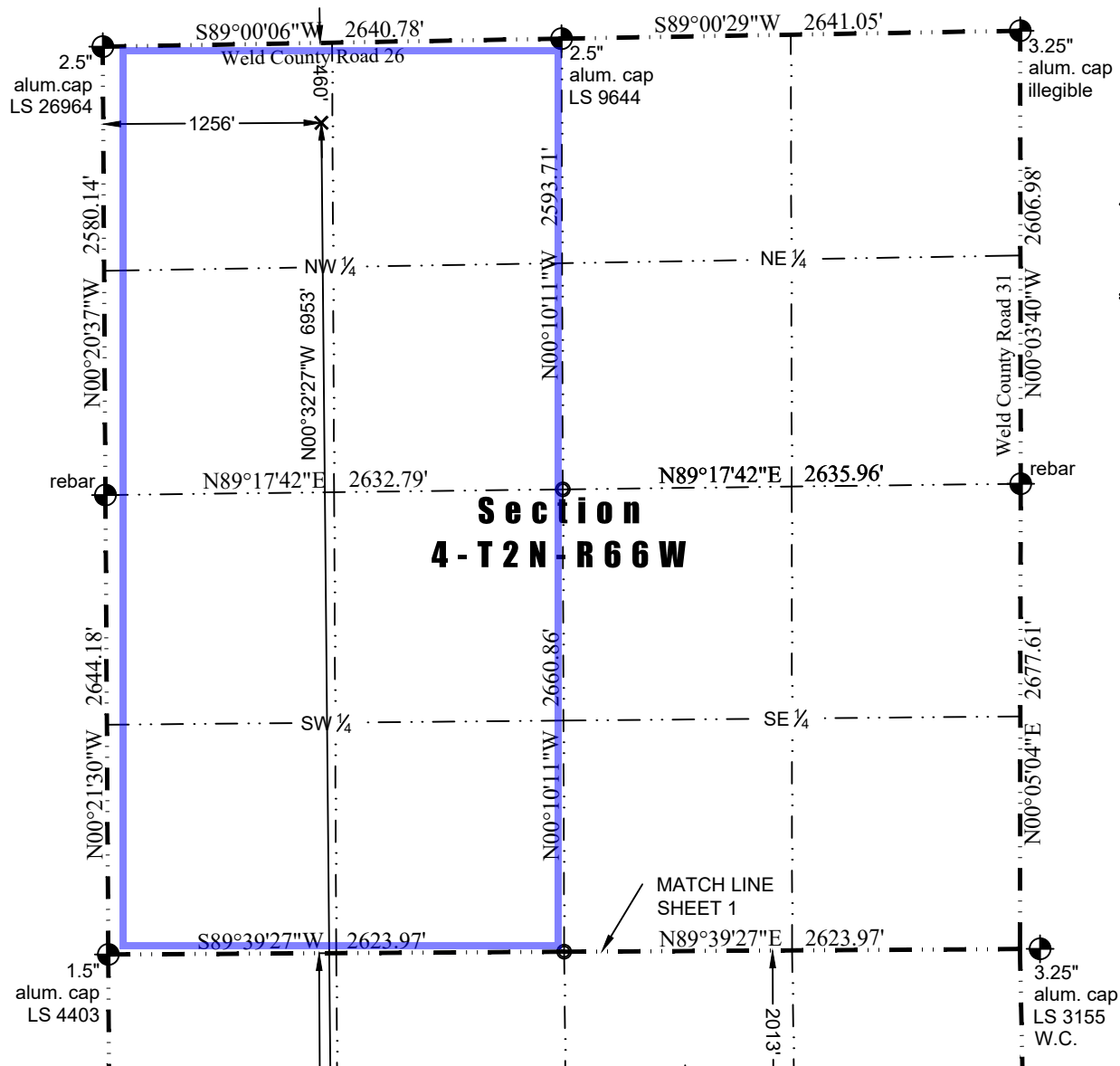
John Robert MacGhee, L.S. 3385
Well: DAVIS 1P-9H-G266

Notes:

- 1) Bearings and distances based on NAD 83 Colorado North State Plane Coordinate, using RTK GPS observations taken 12/26/17 by operator Jason Dahlan.
- 2) Conversion factor to ground (1.0002753983).
- 3) Elevations based on NAVD 88 GPS heights and Geoid 2009 corrections.
- 4) See Location Drawing for visible improvements within 500 feet of Pad Site.
- 5) The surface use is a cultivated field.

NOTICE: According to Colorado law you must commence any legal action based upon any defect in this W.L.C. within three years after you first discover such defect. In no event may any action based upon any defect in this W.L.C. be commenced more than ten years from this said date of the certification shown hereon.

Davis 1P-9H-G266
T2N-R66W
Section 4: W2
Section 9: NW

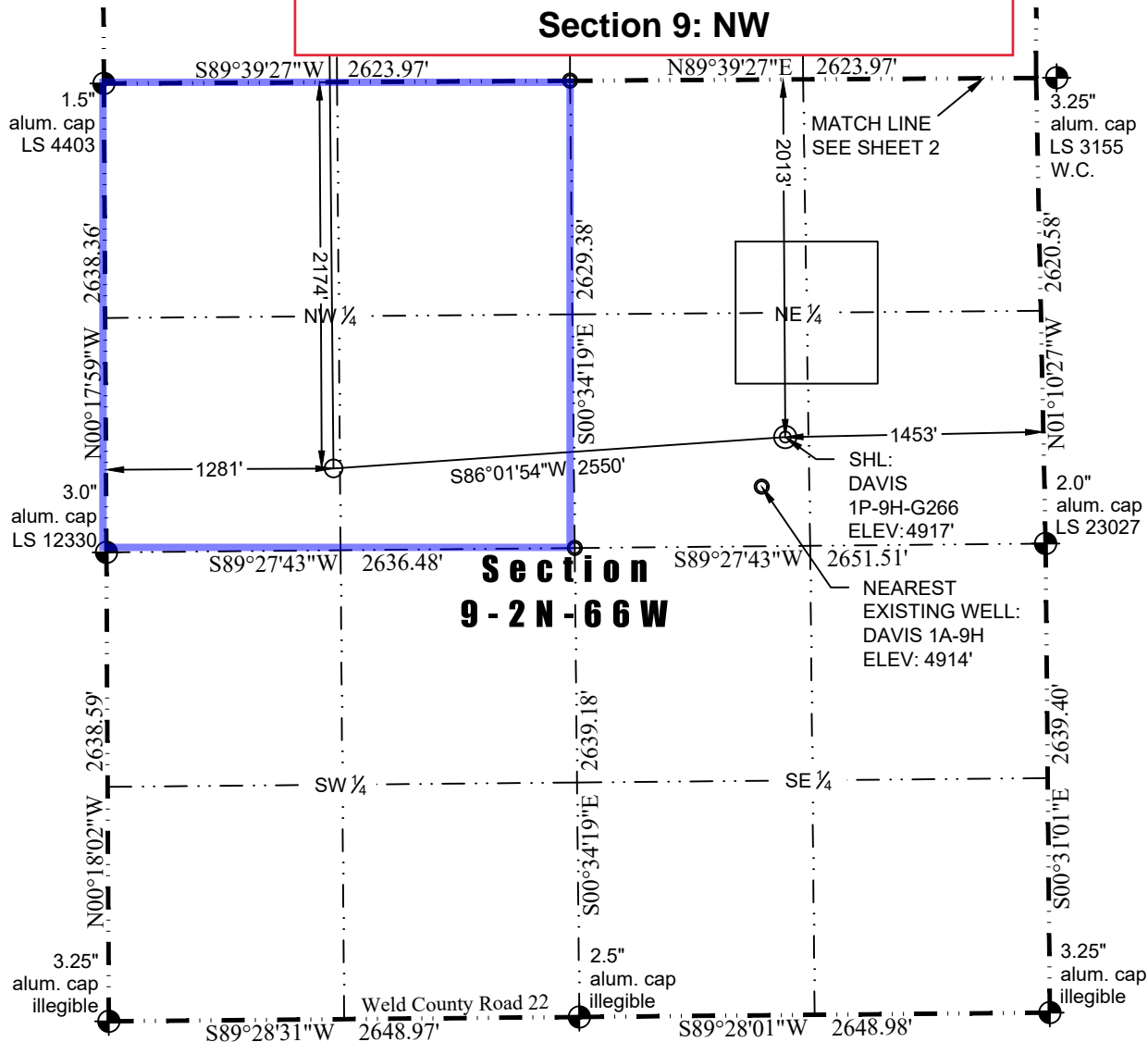


LEGEND

- ⊕ - Found Survey Monument
- ⊗ - Calculated Position
- ⊙ - Surface Hole Location (SHL)
- - Top of Producing Zone (TPZ)
- × - Bottom Hole Location (BHL)

Davis 1P-9H-G266
T2N-R66W
Section 4: W2
Section 9: NW

Washburn Land Surveying
www.WashburnSurveying.com
970-232-9645



In accordance with a request from Jay Knutson of Crestone Peak Resources, Washburn Land Surveying, LLC has determined the location of the **DAVIS 1P-9H-G266** well site to be SHL: 2013' FNL and 1453' FEL, (TPZ: 2174' FNL and 1281' FWL), (BHL: 460' FNL and 1256' FWL), as measured at ninety (90) degrees from the section lines of Sections 9 and 4, Township 2 North, Range 66 West of the 6th Principal Meridian, Weld County Colorado.

Proposed Surface Hole Data:
Latitude: N 40.154297°
Longitude: W 104.777999°
PDOP: 1.4

Proposed TPZ Data:
Latitude: N 40.153869°
Longitude: W 104.787104°

Proposed Bottom Hole Data:
Latitude: N 40.172955°
Longitude: W 104.787139°

Nearest Cultural Items:
Building: 1067' NE
Building Unit: 1120' E
Above Ground Utility: 687' N
Public Road: 1426' E
Existing Well: 309' SW

Well Window: 301' Outside
Property Line: 613' S
Railroad: +5280'
High Occupancy Building Unit: +5280'
Designated Outside Activity Area: +5280'

LEGEND

- ◆ - Found Survey Monument
- - Calculated Position
- ⊙ - Surface Hole Location (SHL)
- - Top of Producing Zone (TPZ)
- × - Bottom Hole Location (BHL)

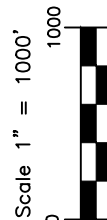
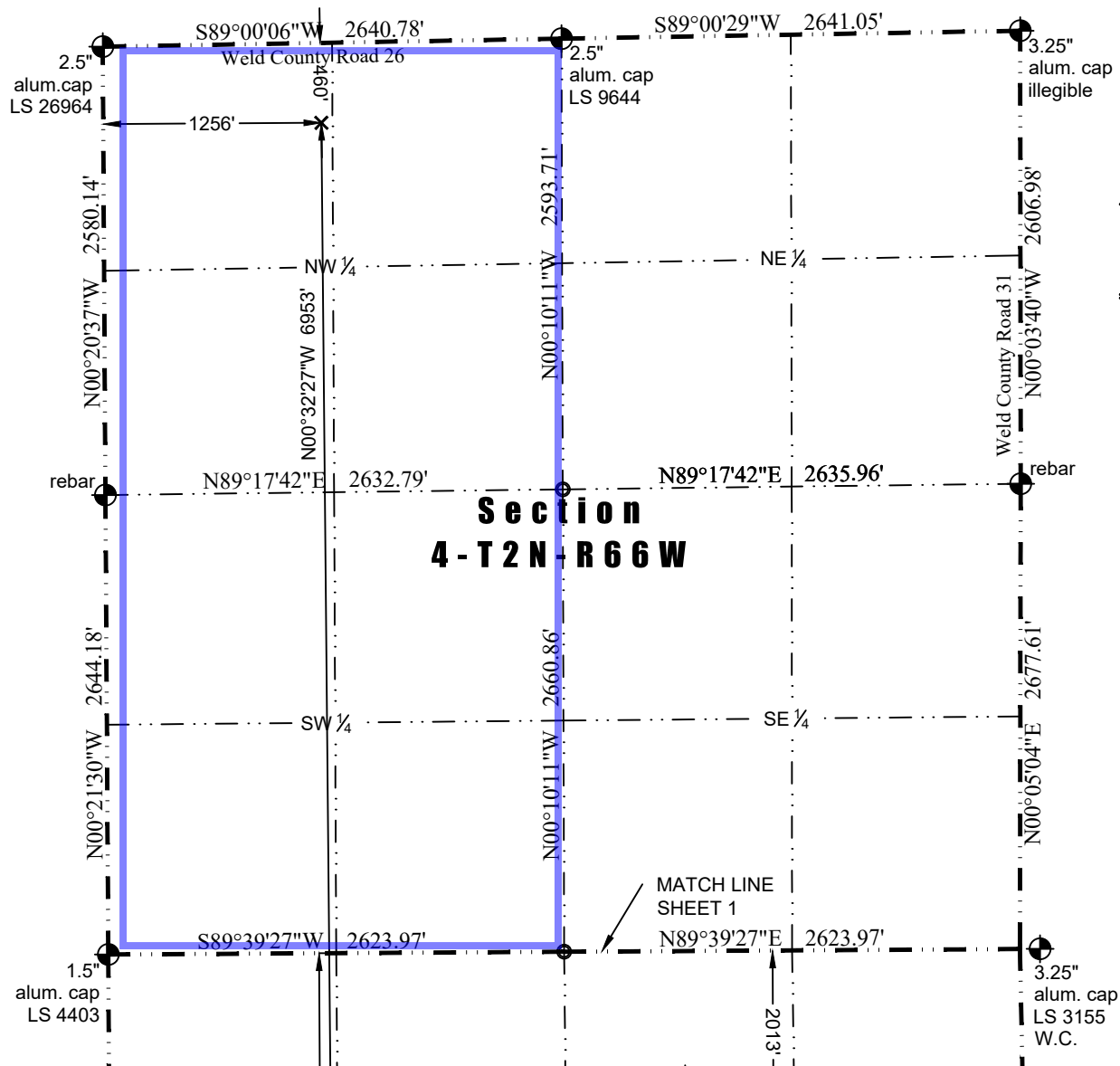
I hereby certify that this Location Certificate was prepared by me or under my direct supervision on 12-27-2017 for and on behalf of Crestone Peak Resources, Inc. as a Land Surveyor and an Improvement Surveyor and that it is not to be relied upon for establishment of fences, buildings, or other future improvement lines.

John Robert MacGhee, L.S. 3685
Well: DAVIS 1P-9H-G266

- Notes:**
- 1) Bearings and distances based on NAD 83 Colorado North State Plane Coordinate, using RTK GPS observations taken 12/26/17 by operator Jason Dahlan.
 - 2) Conversion factor to ground (1.0002753983).
 - 3) Elevations based on NAVD 88 GPS heights and Geoid 2009 corrections.
 - 4) See Location Drawing for visible improvements within 500 feet of Pad Site.
 - 5) The surface use is a cultivated field.

NOTICE: According to Colorado law you must commence any legal action based upon any defect in this W.L.C. within three years after you first discover such defect. In no event may any action based upon any defect in this W.L.C. be commenced more than ten years from this said date of the certification shown hereon.

Davis 1P-9H-G266
T2N-R66W
Section 4: W2
Section 9: NW



LEGEND

- ⊕ - Found Survey Monument
- ⊙ - Calculated Position
- ⊙ - Surface Hole Location (SHL)
- - Top of Producing Zone (TPZ)
- × - Bottom Hole Location (BHL)