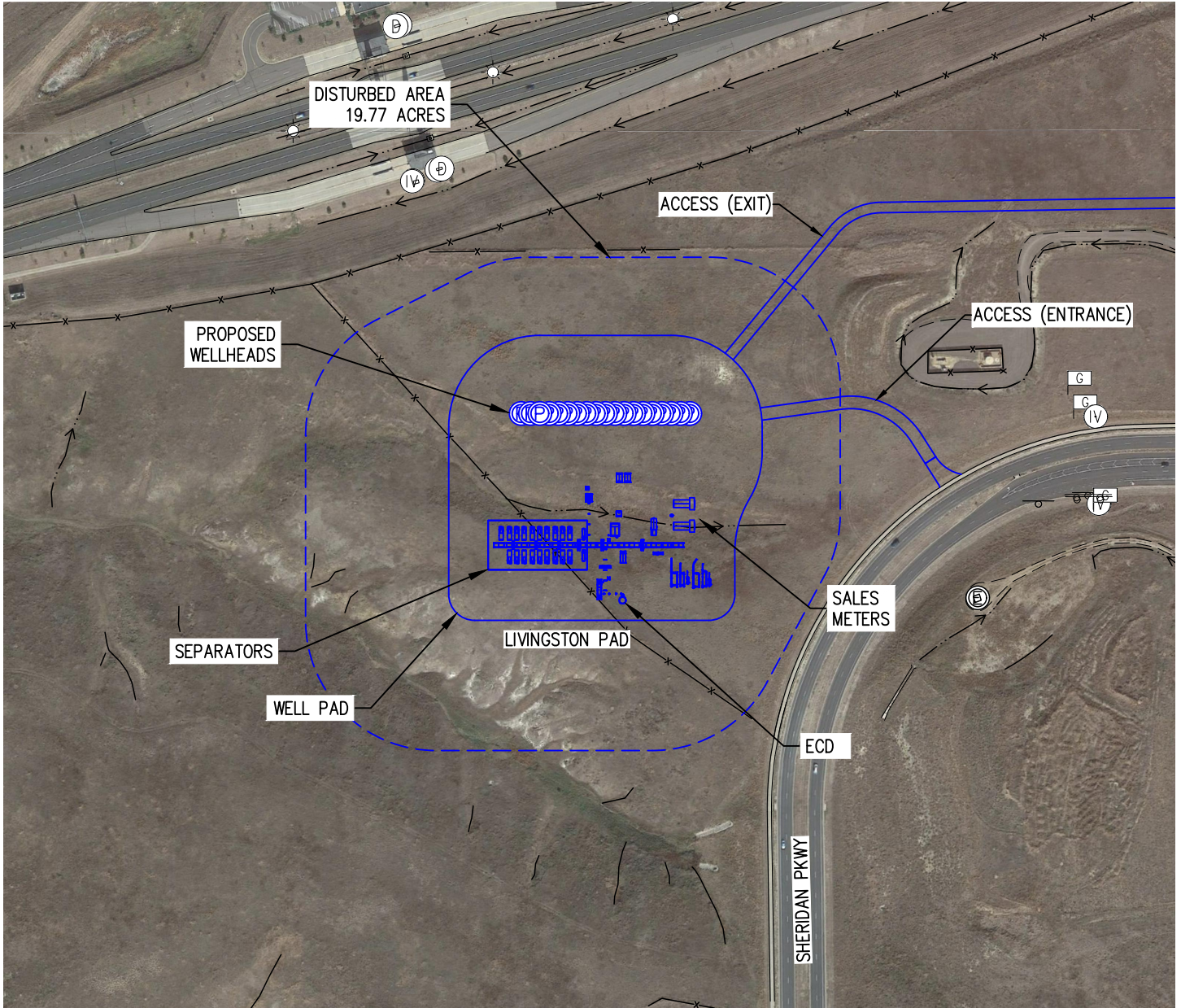


FACILITY LAYOUT DRAWING LIVINGSTON PAD

SECTION 7, TOWNSHIP 1 SOUTH, RANGE 68 WEST, 6TH P.M.



- | | | | | | |
|--|--------------------|--|------------------|--|--------------|
| | PROPOSED WELL HEAD | | ELECTRIC PANEL | | WATER VALVE |
| | EXISTING WELL HEAD | | IRRIGATION VALVE | | FIRE HYDRANT |
| | GAS MARKER | | DRAINAGE MANHOLE | | |
| | LIGHT POLE | | SANITARY MANHOLE | | |

NOTE: PROPOSED FEATURES SHOWN IN BLUE

DISTURBED/RECLAIMED AREAS

TOTAL DISTURBED AREA OF
LOCATION= 19.77 ACRES



DRAWN BY RPM	CHECKED BY AAD
INITIAL SUBMITTAL 12/8/2017	
REVISED NA	
DRAWING SIZE 8.5" X 11"	
JOB NO. EXT01S68W07-01	
SHEET 1 OF 1	

BASELINE
Engineering - Planning - Surveying

4007 S. LINCOLN AVENUE, SUITE 405 - LOVELAND, COLORADO 80537
P: 970.353.7800 - F: 970.353.7801 - www.baselinecorp.com