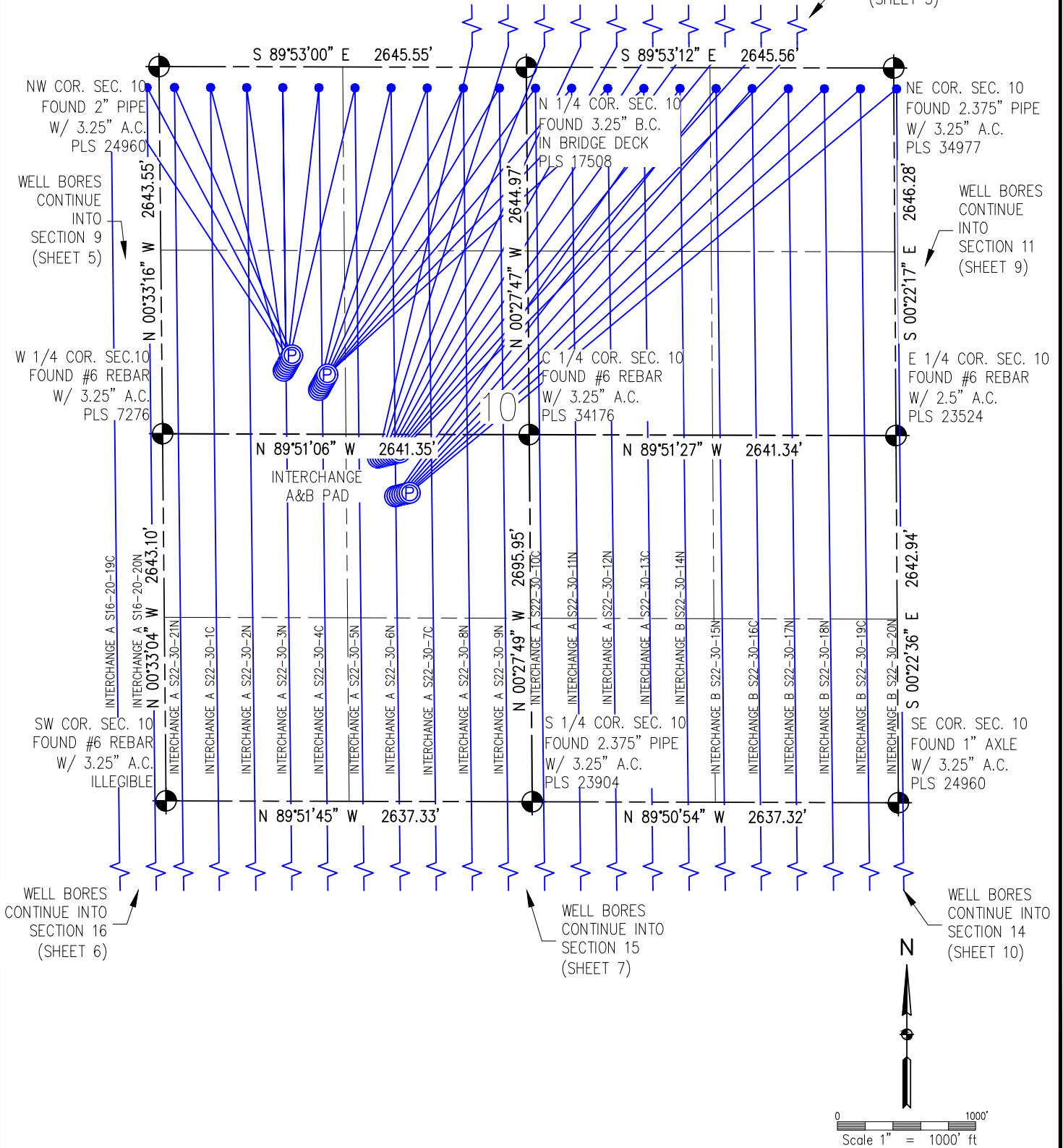


MULTI WELL PLAN INTERCHANGE A&B PAD

W1/2 SECTION 10, TOWNSHIP 1 SOUTH, RANGE 68 WEST, 6TH P.M.

WELL BORES
CONTINUE INTO
SECTION 3
(SHEET 3)



LEGEND

- - FOUND/SET SURVEY MONUMENT PER MONUMENT RECORD EXCEPTIONS NOTED.
- - CALCULATED SURVEY MONUMENT POSITION
- (C) - CALCULATED DIMENSION



DRAWN BY	BGR	CHECKED BY	AAD
INITIAL SUBMITTAL	12/8/2017	REVISED	N/A
DRAWING SIZE	8.5" X 11"	JOB NO.	EXT01S68W10-03
SHEET	1	OF	17

BASELINE
Engineering - Planning - Surveying

4007 S. LINCOLN AVENUE, SUITE 405 • LOVELAND, COLORADO 80537
P: 970.363.7800 • F: 970.363.7801 • www.baselinecorp.com

MULTI WELL PLAN INTERCHANGE A&B PAD

W1/2 SECTION 10, TOWNSHIP 1 SOUTH, RANGE 68 WEST, 6TH P.M.

NOTES (SURFACE HOLES, SECTION 10, TOWNSHIP 1 SOUTH, RANGE 68 WEST):

INTERCHANGE A S22-30-1C TO BE AT 2188' FNL, 877' FWL
INTERCHANGE A S22-30-2N TO BE AT 2172' FNL, 886' FWL
INTERCHANGE A S22-30-3N TO BE AT 2156' FNL, 895' FWL
INTERCHANGE A S22-30-4C TO BE AT 2140' FNL, 903' FWL
INTERCHANGE A S22-30-5N TO BE AT 2125' FNL, 912' FWL
INTERCHANGE A S16-20-19C TO BE AT 2109' FNL, 921' FWL
INTERCHANGE A S16-20-20N TO BE AT 2093' FNL, 930' FWL
INTERCHANGE A S22-20-21N TO BE AT 2077' FNL, 938' FWL
INTERCHANGE A S22-30-6N TO BE AT 2326' FNL, 1129' FWL
INTERCHANGE A S22-30-7C TO BE AT 2310' FNL, 1138' FWL
INTERCHANGE A S22-30-8N TO BE AT 2294' FNL, 1147' FWL
INTERCHANGE A S22-30-9N TO BE AT 2279' FNL, 1156' FWL
INTERCHANGE A S22-30-10C TO BE AT 2263' FNL, 1165' FWL
INTERCHANGE A S22-30-11N TO BE AT 2247' FNL, 1173' FWL
INTERCHANGE A S22-30-12N TO BE AT 2231' FNL, 1182' FWL
INTERCHANGE A S22-30-13C TO BE AT 2215' FNL, 1191' FWL
INTERCHANGE B S22-30-14N TO BE AT 2196' FSL, 1671' FWL
INTERCHANGE B S22-30-15N TO BE AT 2200' FSL, 1688' FWL
INTERCHANGE B S22-30-16C TO BE AT 2205' FSL, 1706' FWL
INTERCHANGE B S22-30-17N TO BE AT 2209' FSL, 1723' FWL
INTERCHANGE B S22-30-18N TO BE AT 2213' FSL, 1741' FWL
INTERCHANGE B S22-30-19C TO BE AT 2218' FSL, 1758' FWL
INTERCHANGE B S22-30-20N TO BE AT 2222' FSL, 1776' FWL

INTERCHANGE B N35-20-1N TO BE AT 2474' FSL, 1550' FWL
INTERCHANGE B N35-20-2C TO BE AT 2479' FSL, 1567' FWL
INTERCHANGE B N35-20-3N TO BE AT 2483' FSL, 1585' FWL
INTERCHANGE B N35-20-4N TO BE AT 2487' FSL, 1602' FWL
INTERCHANGE B N35-20-5C TO BE AT 2492' FSL, 1620' FWL
INTERCHANGE B N35-20-6N TO BE AT 2496' FSL, 1637' FWL
INTERCHANGE B N35-20-7N TO BE AT 2500' FSL, 1655' FWL
INTERCHANGE B N35-20-8C TO BE AT 2505' FSL, 1672' FWL
INTERCHANGE B N35-20-9N TO BE AT 2509' FSL, 1690' FWL
INTERCHANGE B N35-20-10N TO BE AT 2513' FSL, 1707' FWL

NOTES (ENTRY POINTS, SECTION 10, TOWNSHIP 1 SOUTH, RANGE 68 WEST):

INTERCHANGE A S22-30-21N TO BE AT 150' FNL, 110' FWL
INTERCHANGE A S22-30-1C TO BE AT 150' FNL, 370' FWL
INTERCHANGE A S22-30-2N TO BE AT 150' FNL, 630' FWL
INTERCHANGE A S22-30-3N TO BE AT 150' FNL, 890' FWL
INTERCHANGE A S22-30-4C TO BE AT 150' FNL, 1150' FWL
INTERCHANGE A S22-30-5N TO BE AT 150' FNL, 1410' FWL
INTERCHANGE A S22-30-6N TO BE AT 150' FNL, 1670' FWL
INTERCHANGE A S22-30-7C TO BE AT 150' FNL, 1930' FWL
INTERCHANGE A S22-30-8N TO BE AT 150' FNL, 2190' FWL
INTERCHANGE A S22-30-9N TO BE AT 150' FNL, 2450' FWL
INTERCHANGE A S22-30-10C TO BE AT 150' FNL, 2580' FEL
INTERCHANGE A S22-30-11N TO BE AT 150' FNL, 2320' FEL
INTERCHANGE A S22-30-12N TO BE AT 150' FNL, 2060' FEL
INTERCHANGE A S22-30-13C TO BE AT 150' FNL, 1800' FEL
INTERCHANGE B S22-30-14N TO BE AT 150' FNL, 1540' FEL
INTERCHANGE B S22-30-15N TO BE AT 150' FNL, 1280' FEL
INTERCHANGE B S22-30-16C TO BE AT 150' FNL, 1020' FEL
INTERCHANGE B S22-30-17N TO BE AT 150' FNL, 760' FEL
INTERCHANGE B S22-30-18N TO BE AT 150' FNL, 500' FEL
INTERCHANGE B S22-30-19C TO BE AT 150' FNL, 240' FEL



DRAWN BY BGR	CHECKED BY AAD
INITIAL SUBMITTAL	12/8/2017
REVISED	N/A
DRAWING SIZE	8.5" X 11"
JOB NO.	EXT01S68W10-03
SHEET	2 OF 11



MULTI WELL PLAN INTERCHANGE A&B PAD

W1/2 SECTION 10, TOWNSHIP 1 SOUTH, RANGE 68 WEST, 6TH P.M.

WELL BORES
CONTINUE INTO
SECTION 34
(SHEET 4)

SW COR. SEC. 34
FOUND #6 REBAR
UPGRADED
W/ 3.25" A.C.
PLS 38285

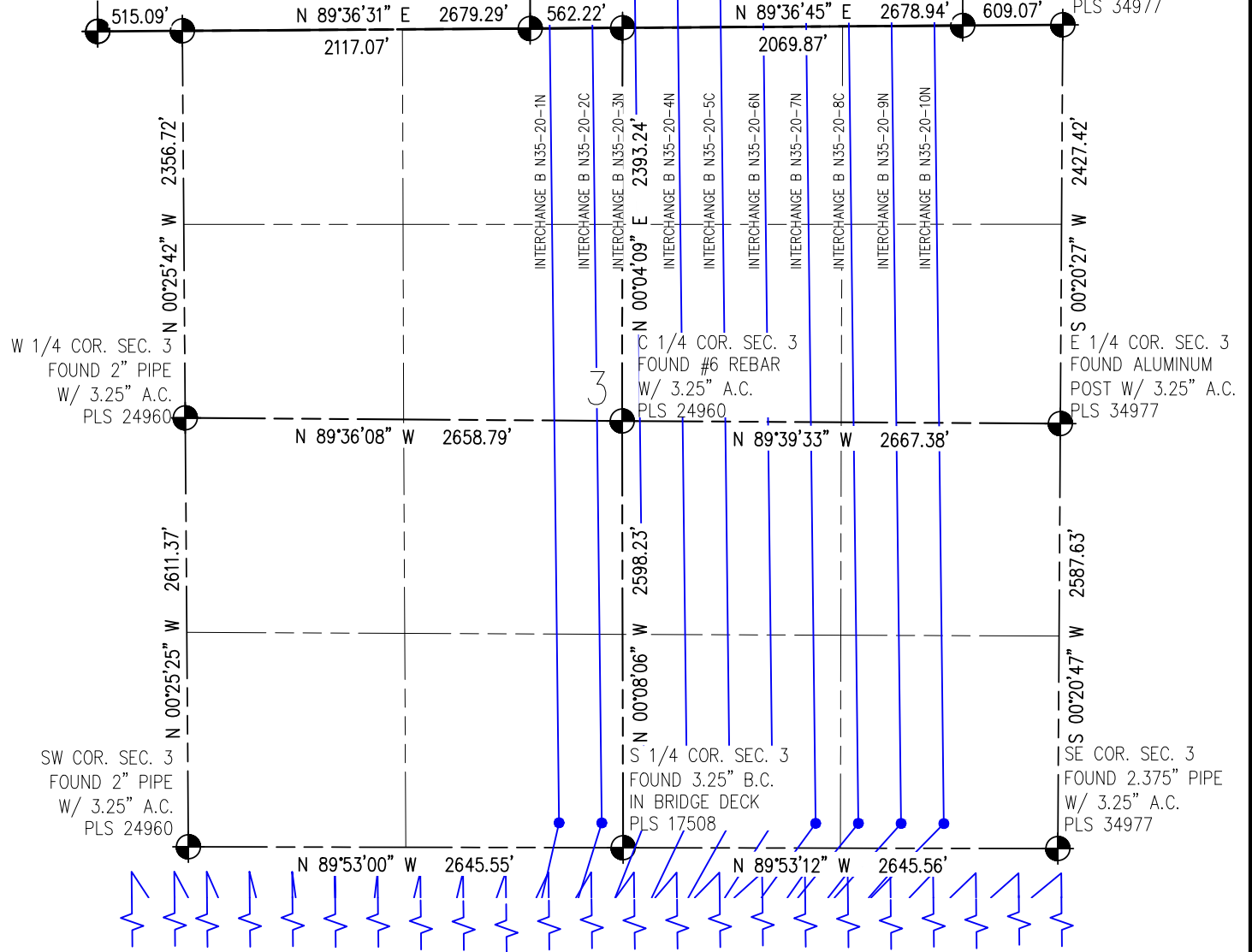
NW COR. SEC. 3
FOUND #6 REBAR
W/ 2" A.C.
PLS 23500

S 1/4 COR. SEC. 34
FOUND #6 REBAR
W/ 2.5" A.C.
PLS 14823

N 1/4 COR. SEC. 3
FOUND #6 REBAR
W/ 3.25" A.C.
PLS 24942

SE COR. SEC. 34
FOUND #6 REBAR
W/ 3.25" A.C.
PLS 23027

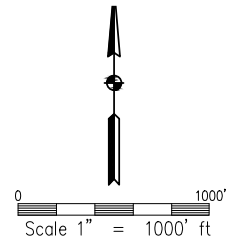
NE COR. SEC. 3
FOUND ALUMINUM
POST W/ 3.25" A.C.
PLS 34977



NOTES (ENTRY POINTS, SECTION 3, TOWNSHIP 1 SOUTH, RANGE 68 WEST):

- INTERCHANGE B N35-20-1N TO BE AT 150' FSL, 2257' FWL
- INTERCHANGE B N35-20-2C TO BE AT 150' FSL, 2517' FEL
- INTERCHANGE B N35-20-3N TO BE AT 150' FSL, 2516' FEL
- INTERCHANGE B N35-20-4N TO BE AT 150' FSL, 2256' FEL
- INTERCHANGE B N35-20-5C TO BE AT 150' FSL, 1995' FEL
- INTERCHANGE B N35-20-6N TO BE AT 150' FSL, 1735' FEL
- INTERCHANGE B N35-20-7N TO BE AT 150' FSL, 1475' FEL
- INTERCHANGE B N35-20-8C TO BE AT 150' FSL, 1215' FEL
- INTERCHANGE B N35-20-9N TO BE AT 150' FSL, 955' FEL
- INTERCHANGE B N35-20-10N TO BE AT 150' FSL, 694' FEL

WELL BORES
CONTINUE INTO
SECTION 10
(SHEET 1)



LEGEND

- - FOUND/SET SURVEY MONUMENT PER MONUMENT RECORD EXCEPTIONS NOTED.
- - CALCULATED SURVEY MONUMENT POSITION
- (C) - CALCULATED DIMENSION



DRAWN BY	BGR	CHECKED BY	AAD
INITIAL SUBMITTAL	12/8/2017	REVISED	N/A
DRAWING SIZE	8.5" X 11"	JOB NO.	EXT01S68W10-03
SHEET	3	OF	11

BASLINE
Engineering - Planning - Surveying
4007 S. LINCOLN AVENUE, SUITE 405 • LOVELAND, COLORADO 80537
P: 970.363.7800 • F: 970.363.7801 • www.baslinecorp.com

MULTI WELL PLAN INTERCHANGE A&B PAD

W1/2 SECTION 10, TOWNSHIP 1 SOUTH, RANGE 68 WEST, 6TH P.M.

N 1/4 COR. SEC. 34
FOUND #6 REB.
W/ 3-1/4" A.C.

NW COR. SEC. 34
FOUND #6 REB.
W/ 3-1/4" A.C.
PLS 13258

NE COR. SEC. 34
FOUND #6 REB.
W/ 2" A.C.

W 1/4 COR.
SEC. 34
FOUND #6 REB.
W/ 3-1/4" A.C.
PLS 18482

E 1/4 COR.
SEC. 34
FOUND #6 REB.
W/ 3-1/4" A.C.

SW COR. SEC. 34
FOUND #6 REB.
W/ 3-1/4" A.C.
PLS 38285

NW COR. SEC. 3
FOUND #6 REB.
W/ 2" A.C.
PLS 23500

S 1/4 COR. SEC. 34
FOUND #6 REB.
W/ 2-1/2" A.C.
PLS 14823

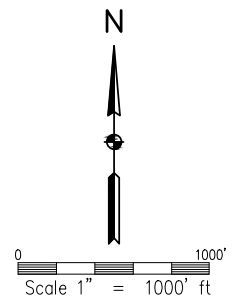
SE COR. SEC. 34
FOUND #6 REB.
W/ 3-1/4" A.C.
PLS 23027

NE COR. SEC. 3
FOUND AL. POST
W/ 3-1/4" A.C.
PLS 34977

NOTES (BOTTOM HOLES, SECTION 34, TOWNSHIP 1 NORTH, RANGE 68 WEST):

INTERCHANGE B N35-20-1N TO BE AT 460' FNL, 2257' FEL
INTERCHANGE B N35-20-2C TO BE AT 460' FNL, 2317' FEL
INTERCHANGE B N35-20-3N TO BE AT 460' FNL, 2057' FEL
INTERCHANGE B N35-20-4N TO BE AT 460' FNL, 1797' FEL
INTERCHANGE B N35-20-5C TO BE AT 460' FNL, 1537' FEL
INTERCHANGE B N35-20-6N TO BE AT 460' FNL, 1277' FEL
INTERCHANGE B N35-20-7N TO BE AT 460' FNL, 1017' FEL
INTERCHANGE B N35-20-8C TO BE AT 460' FNL, 757' FEL
INTERCHANGE B N35-20-9N TO BE AT 460' FNL, 497' FEL
INTERCHANGE B N35-20-10N TO BE AT 460' FNL, 237' FEL

WELL BORES
CONTINUE INTO
SECTION 3
(SHEET 3)



LEGEND

- - FOUND/SET SURVEY MONUMENT PER MONUMENT RECORD EXCEPTIONS NOTED.
- - CALCULATED SURVEY MONUMENT POSITION
- (C) - CALCULATED DIMENSION



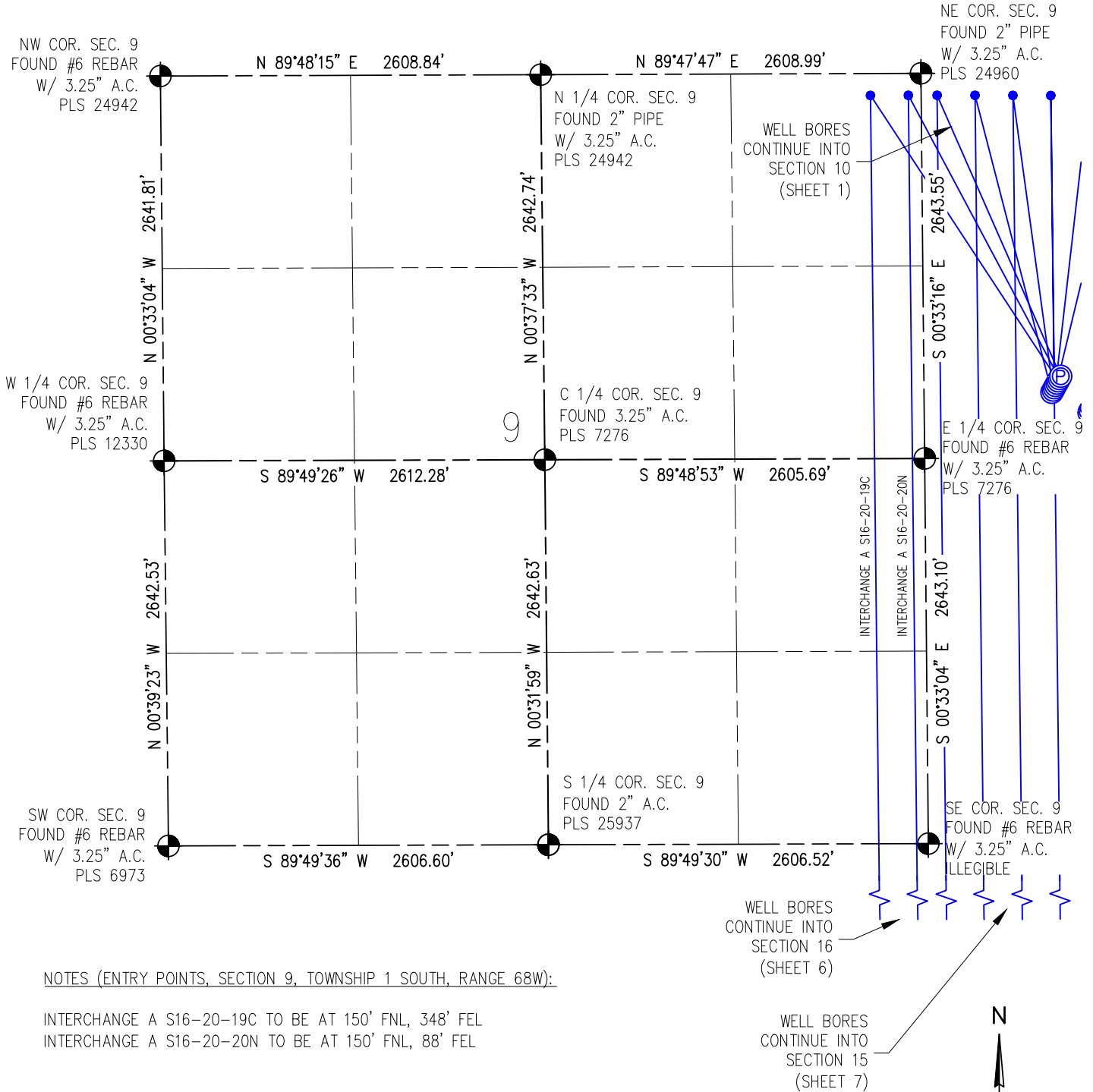
DRAWN BY	BGR	CHECKED BY	AAD
INITIAL SUBMITTAL	12/8/2017		
REVISED	N/A		
DRAWING SIZE	8.5" X 11"		
JOB NO.	EXT01S68W10-03		
SHEET	4 OF 11		

BASLINE
Engineering - Planning - Surveying

4007 S. LINCOLN AVENUE, SUITE 405 • LOVELAND, COLORADO 80537
P: 970.363.7800 • F: 970.363.7801 • www.baslinecorp.com

MULTI WELL PLAN INTERCHANGE A&B PAD

W1/2 SECTION 10, TOWNSHIP 1 SOUTH, RANGE 68 WEST, 6TH P.M.



LEGEND

- FOUND/SET SURVEY MONUMENT PER MONUMENT RECORD EXCEPTIONS NOTED.
- CALCULATED SURVEY MONUMENT POSITION
- CALCULATED DIMENSION



DRAWN BY
BGR

CHECKED BY
AAD

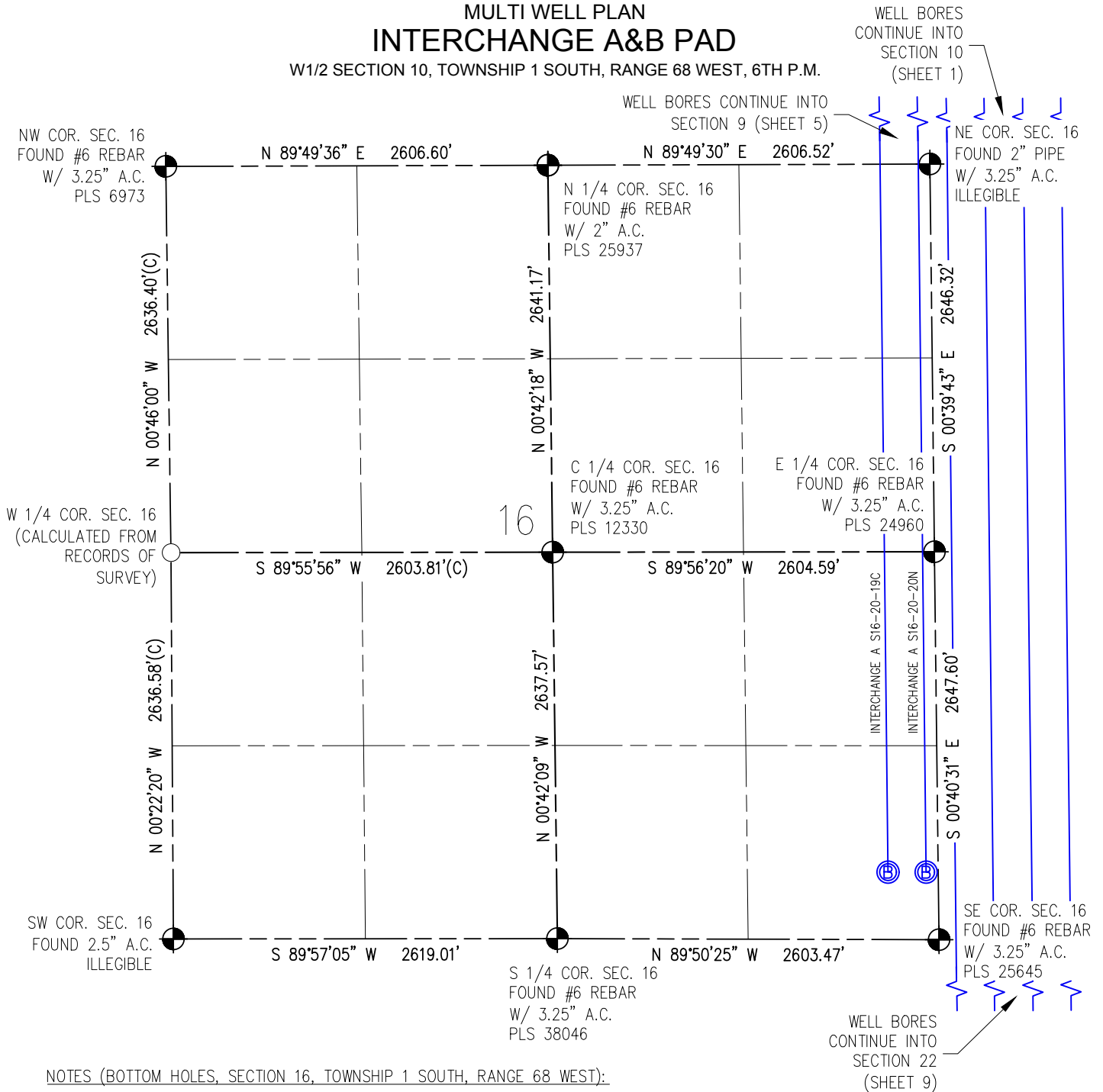
INITIAL SUBMITTAL	12/8/2017
REVISED	N/A
DRAWING SIZE	8.5" X 11"
JOB NO.	EXT01S68W10-03
SHEET	5 OF 11

BASLINE
Engineering - Planning - Surveying

4007 S. LINCOLN AVENUE, SUITE 405 • LOVELAND, COLORADO 80537
P: 970.353.7800 • F: 970.353.7801 • www.baselinecorp.com

MULTI WELL PLAN INTERCHANGE A&B PAD

W1/2 SECTION 10, TOWNSHIP 1 SOUTH, RANGE 68 WEST, 6TH P.M.



NOTES (BOTTOM HOLES, SECTION 16, TOWNSHIP 1 SOUTH, RANGE 68 WEST):

INTERCHANGE A S16-20-19C TO BE AT 460' FSL, 82' FEL
INTERCHANGE A S16-20-20N TO BE AT 460' FSL, 342' FEL

LEGEND

- - FOUND/SET SURVEY MONUMENT PER MONUMENT RECORD EXCEPTIONS NOTED.
- - CALCULATED SURVEY MONUMENT POSITION
- (C) - CALCULATED DIMENSION



DRAWN BY	BGR	CHECKED BY	AAD
INITIAL SUBMITTAL	12/8/2017	REVISED	N/A
DRAWING SIZE	8.5" X 11"	JOB NO.	EXT01S68W10-03
SHEET	6 OF 11		

BASELINE
Engineering - Planning - Surveying

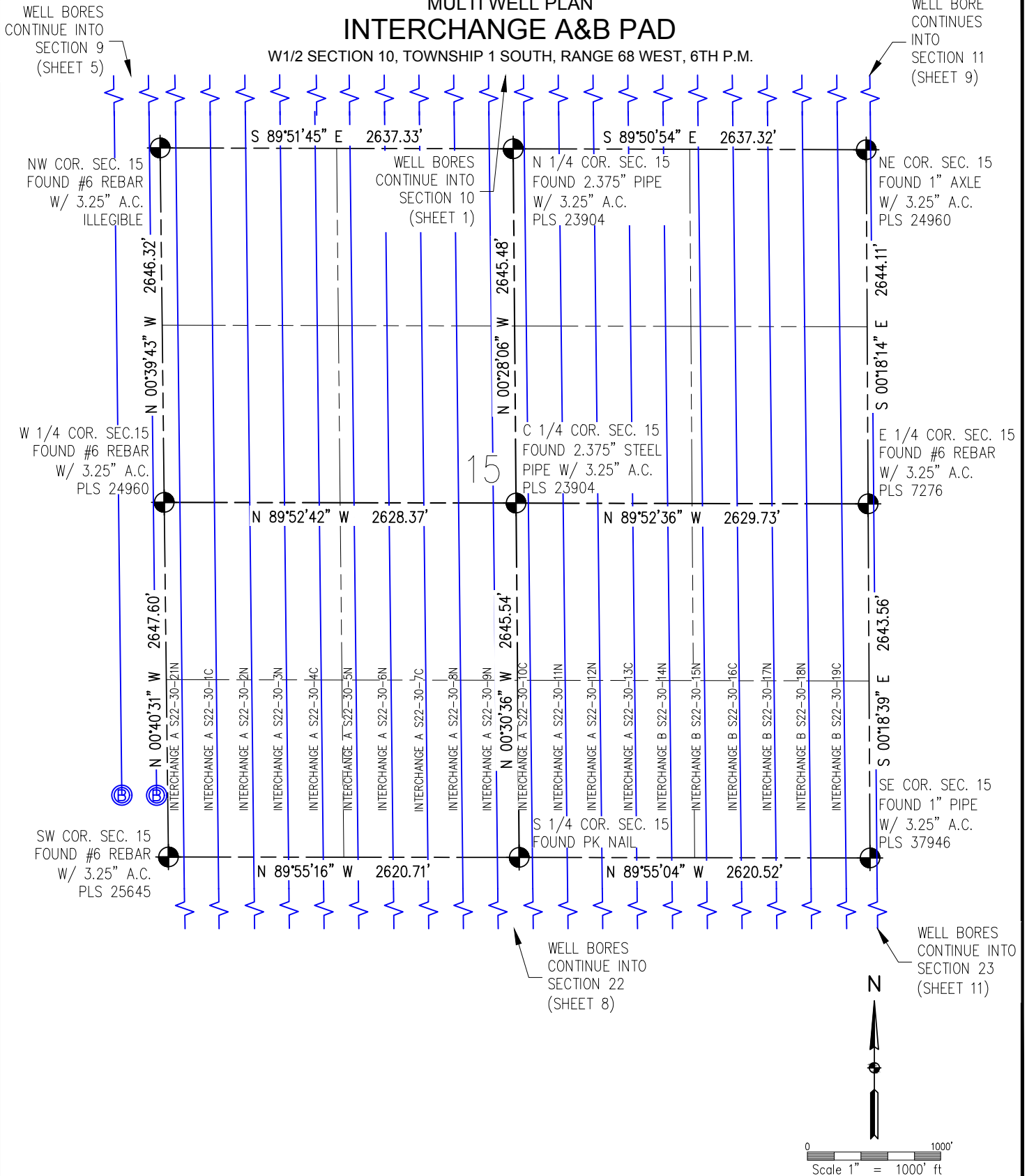
4007 S. LINCOLN AVENUE, SUITE 405 • LOVELAND, COLORADO 80537
P: 970.353.7800 • F: 970.353.7801 • www.baselinecorp.com

M:\co - Well Head Staking\EXT01S68W10-03 (INTERCHANGE)\Drawings\EXT01S68W10-03 (INTERCHANGE) - 2A.dwg, 12/8/2017 4:06:17 PM, Ben Redinius

MULTI WELL PLAN

INTERCHANGE A&B PAD

W1/2 SECTION 10, TOWNSHIP 1 SOUTH, RANGE 68 WEST, 6TH P.M.



LEGEND

- - FOUND/SET SURVEY MONUMENT PER MONUMENT RECORD EXCEPTIONS NOTED.
- - CALCULATED SURVEY MONUMENT POSITION
- (C) - CALCULATED DIMENSION

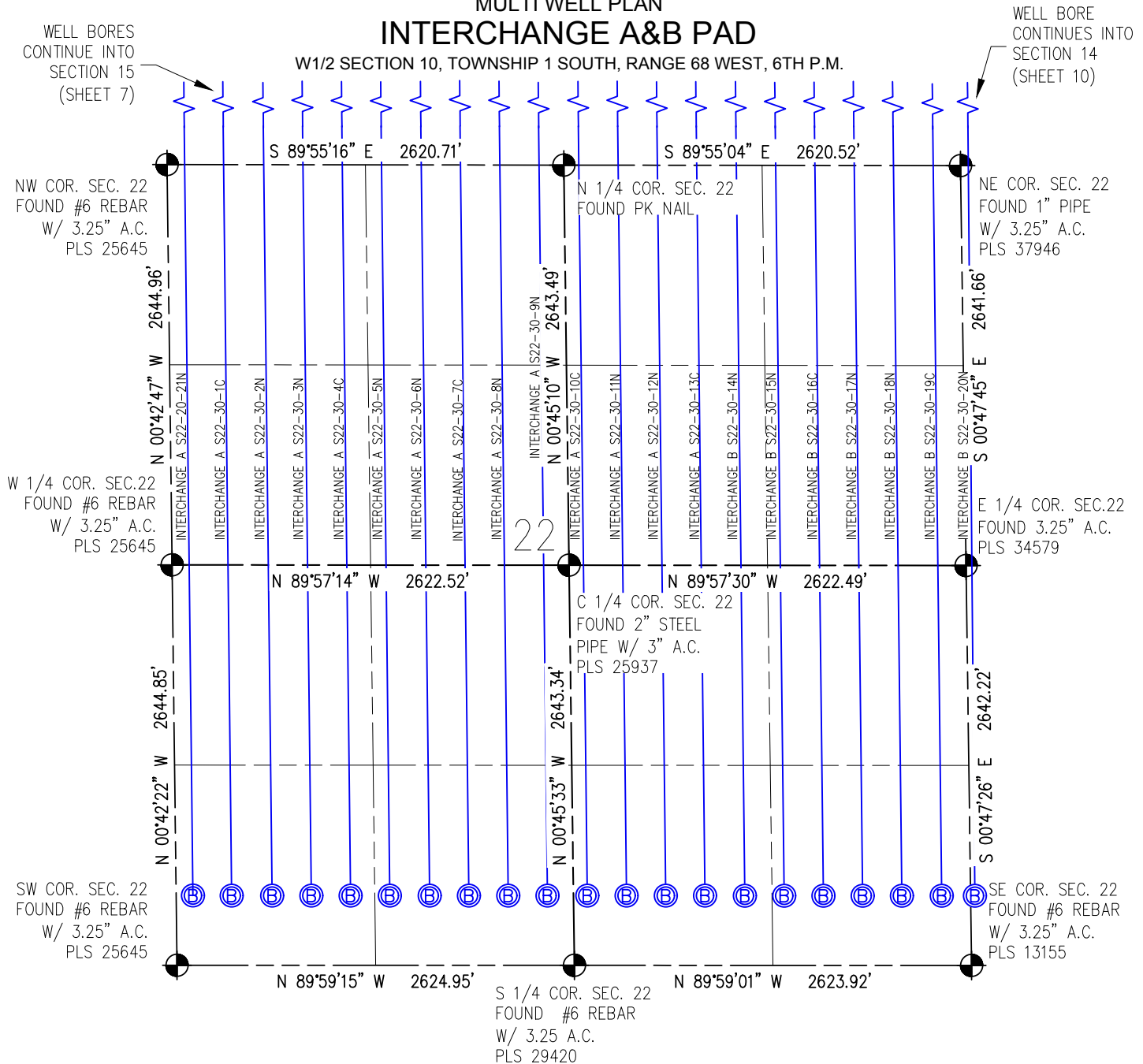


DRAWN BY	BGR	CHECKED BY	AAD
INITIAL SUBMITTAL	12/8/2017		
REVISED	N/A		
DRAWING SIZE	8.5" X 11"		
JOB NO.	EXT01S68W10-03		
SHEET	7	OF	11

BASELINE
Engineering - Planning - Surveying
4007 S. LINCOLN AVENUE, SUITE 405 • LOVELAND, COLORADO 80537
P: 970.363.7800 • F: 970.363.7801 • www.baselinecorp.com

MULTI WELL PLAN INTERCHANGE A&B PAD

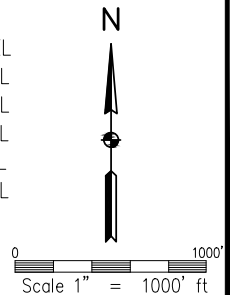
W1/2 SECTION 10, TOWNSHIP 1 SOUTH, RANGE 68 WEST, 6TH P.M.



NOTES (BOTTOM HOLES, SECTION 22, TOWNSHIP 1 SOUTH, RANGE 68 WEST):

INTERCHANGE A S22-20-21N TO BE AT 460' FSL, 111' FWL
 INTERCHANGE A S22-30-1C TO BE AT 460' FSL, 366' FWL
 INTERCHANGE A S22-30-2N TO BE AT 460' FSL, 634' FWL
 INTERCHANGE A S22-30-3N TO BE AT 460' FSL, 893' FWL
 INTERCHANGE A S22-30-4C TO BE AT 460' FSL, 1152' FWL
 INTERCHANGE A S22-30-5N TO BE AT 460' FSL, 1411' FWL
 INTERCHANGE A S22-30-6N TO BE AT 460' FSL, 1674' FWL
 INTERCHANGE A S22-30-7C TO BE AT 460' FSL, 1934' FWL
 INTERCHANGE A S22-30-8N TO BE AT 460' FSL, 2193' FWL
 INTERCHANGE A S22-30-9N TO BE AT 460' FSL, 2452' FWL

INTERCHANGE A S22-30-10C TO BE AT 460' FSL, 2532' FEL
 INTERCHANGE A S22-30-11N TO BE AT 460' FSL, 2273' FEL
 INTERCHANGE A S22-30-12N TO BE AT 460' FSL, 2014' FEL
 INTERCHANGE A S22-30-13C TO BE AT 460' FSL, 1754' FEL
 INTERCHANGE B S22-30-14N TO BE AT 460' FSL, 1491' FEL
 INTERCHANGE B S22-30-15N TO BE AT 460' FSL, 1232' FEL
 INTERCHANGE B S22-30-16C TO BE AT 460' FSL, 973' FEL
 INTERCHANGE B S22-30-17N TO BE AT 460' FSL, 713' FEL
 INTERCHANGE B S22-30-18N TO BE AT 460' FSL, 454' FEL
 INTERCHANGE B S22-30-19C TO BE AT 460' FSL, 191' FEL



LEGEND

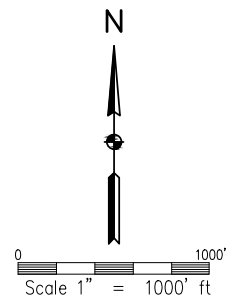
- - FOUND/SET SURVEY MONUMENT PER MONUMENT RECORD EXCEPTIONS NOTED.
- - CALCULATED SURVEY MONUMENT POSITION
- (C) - CALCULATED DIMENSION






DRAWN BY	BGR	CHECKED BY	AAD
INITIAL SUBMITTAL	12/8/2017	REVISED	N/A
DRAWING SIZE	8.5" X 11"	JOB NO.	EXT01S68W10-03
SHEET	8	OF	11

BASLINE
 Engineering - Planning - Surveying
 4007 S. LINCOLN AVENUE, SUITE 405 • LOVELAND, COLORADO 80537
 P: 970.363.7800 • F: 970.363.7801 • www.baslinecorp.com

W1/2 SECTION 10, TOWNSHIP 1 SOUTH, RANGE 68 WEST, 6TH P.M.



-  - FOUND/SET SURVEY MONUMENT PER MONUMENT RECORD EXCEPTIONS NOTED.
 - CALCULATED SURVEY MONUMENT POSITION
 - CALCULATED DIMENSION



DRAWN BY BCR	CHECKED BY AAD
INITIAL SUBMITTAL	12/8/2017
REVISED	N/A
DRAWING SIZE	8.5" X 11"
JOB NO.	EXT01S68W10-03
SHEET 9 OF 11	

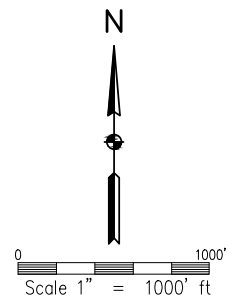
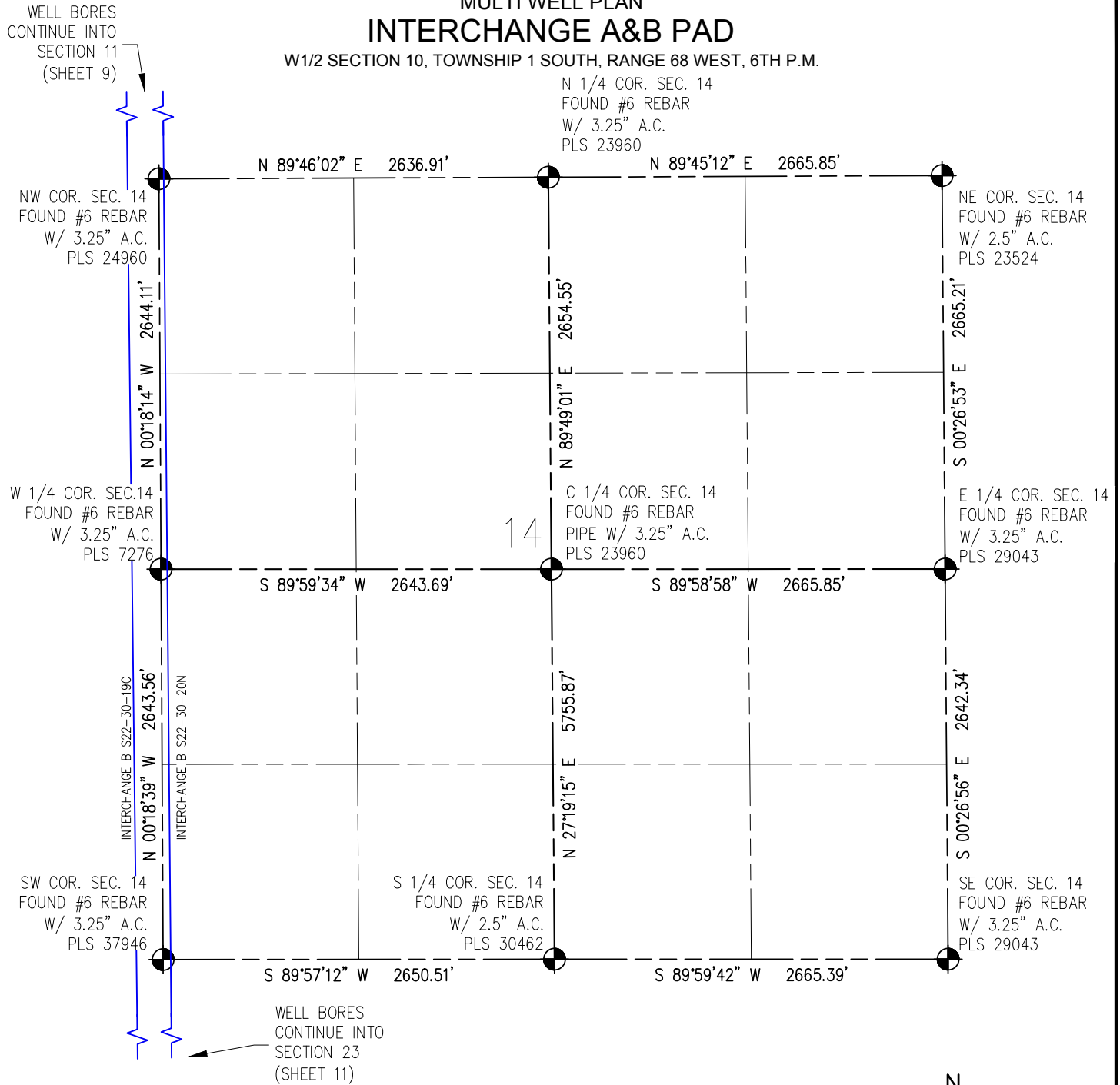


M:\co - Well Head Staking\EXT01S68W10-03 (INTERCHANGE)\Drawings\EXT01S68W10-03 (INTERCHANGE) - 2A.dwg, 12/8/2017 4:07:25 PM, Ben Redinius

M:\co - Well Head Staking\EXT01S68W10-03 (INTERCHANGE)\Drawings\EXT01S68W10-03 (INTERCHANGE) - 2A.dwg, 12/8/2017 4:07:59 PM, Ben Redinius

MULTI WELL PLAN INTERCHANGE A&B PAD

W1/2 SECTION 10, TOWNSHIP 1 SOUTH, RANGE 68 WEST, 6TH P.M.



LEGEND

- - FOUND/SET SURVEY MONUMENT PER MONUMENT RECORD EXCEPTIONS NOTED.
- - CALCULATED SURVEY MONUMENT POSITION
- (C) - CALCULATED DIMENSION



DRAWN BY
BGR

CHECKED BY
AAD

INITIAL SUBMITTAL 12/8/2017
REVISED N/A
DRAWING SIZE 8.5" X 11"
JOB NO. EXT01S68W10-03
SHEET 10 OF 11

BASELINE
Engineering - Planning - Surveying

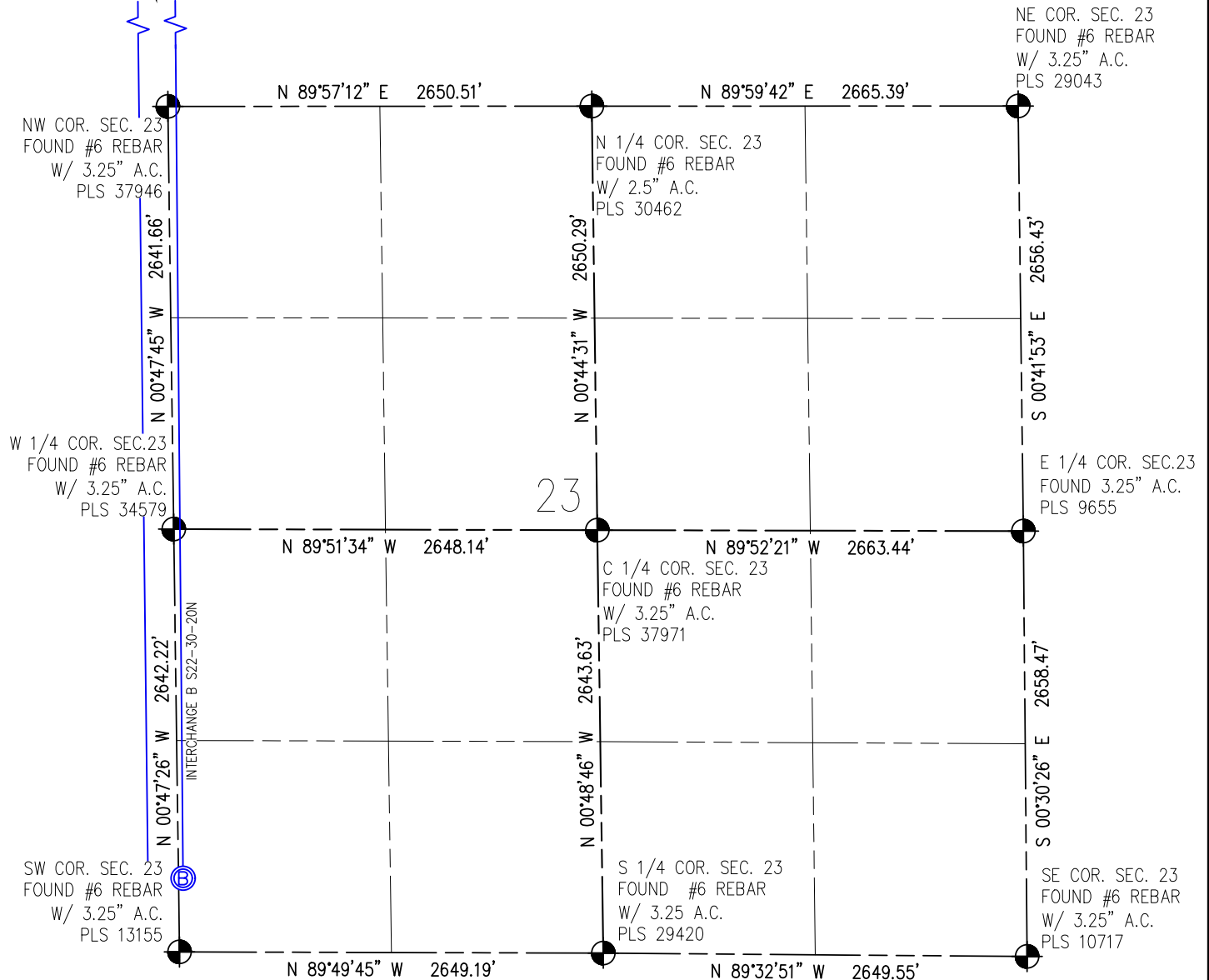
4007 S. LINCOLN AVENUE, SUITE 405 • LOVELAND, COLORADO 80537
P: 970.363.7800 • F: 970.363.7801 • www.baselinecorp.com

M:\co - Well Head Staking\EXT01S68W10-03 (INTERCHANGE)\Drawings\EXT01S68W10-03 (INTERCHANGE) - 2A.dwg, 12/8/2017 4:08:33 PM, Ben Redinius

WELL BORES
CONTINUE INTO
SECTION 14
(SHEET 10)

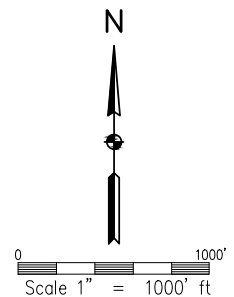
MULTI WELL PLAN INTERCHANGE A&B PAD

W1/2 SECTION 10, TOWNSHIP 1 SOUTH, RANGE 68 WEST, 6TH P.M.



NOTES (BOTTOM HOLES, SECTION 23, TOWNSHIP 1 SOUTH, RANGE 68 WEST):

INTERCHANGE B S22-30-20N TO BE AT 460' FSL, 28' FWL



LEGEND

- FOUND/SET SURVEY MONUMENT PER MONUMENT RECORD EXCEPTIONS NOTED.
- CALCULATED SURVEY MONUMENT POSITION
- CALCULATED DIMENSION



DRAWN BY	CHECKED BY
BGR	AAD
INITIAL SUBMITTAL	12/8/2017
REVISED	N/A
DRAWING SIZE	8.5" X 11"
JOB NO.	EXT01S68W10-03
SHEET	11 OF 11

BASLINE
Engineering - Planning - Surveying

4007 S. LINCOLN AVENUE, SUITE 405 • LOVELAND, COLORADO 80537
P: 970.363.7800 • F: 970.363.7801 • www.baselinescorp.com