

Directional Services

Company: Petroleum Development Corp.

Well Name: McGlothin Farms 4W-234

API: 051234400300

County/Parish: Weld

State: Colorado

Country: United States

Job number: 16-43

Field: Waineburg

Rd Id: Ensign 161

Survey Company: Ensign Directional Services

Operator: Petroleum Development Corp.

Company Man: Brady Sharp, Joan Fallon

Daylight DD: Zach Gentry

Swing Shift DD: Chris Smiley

NPH DD: Tony Calbow

Daylight MWD: Justin Kirt

Nicks MWD: Tomalak

Log measurements: Gamma, ROP

Maximum temperature:

Depth measured from:

Start: 0 ft

End: 1386 ft

Date: 9-27-2017

10-03-2017

Emulsions

WT: 4833 ft

DT: 4833 ft

Intermediate:

Surface: 9.56"

ROP:

Rate:

Run:

Run:

Run:

Run:

Run:

Run:

Run:

Run:

Run:

Run:

Run:

Run:

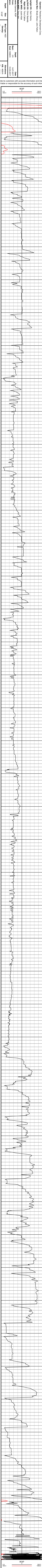
Run:

Run:

Run:

Run:

Run:



Company: Perichon Development Corp.	
Well Name: McGoethlin Farms 4W-234	
API #: 03-12344-00300	
County: Perth, WI-DC	
State: Colorado	
Country: United States	
Job Number: 15-353	
Field: Wandering	
Rig: Epsilon 161	
Army: Epsilon Direction Services	
McGoethlin Farms 4W-234	
2'-100'	
TVD	
Interpretations in notation or interpretation.	