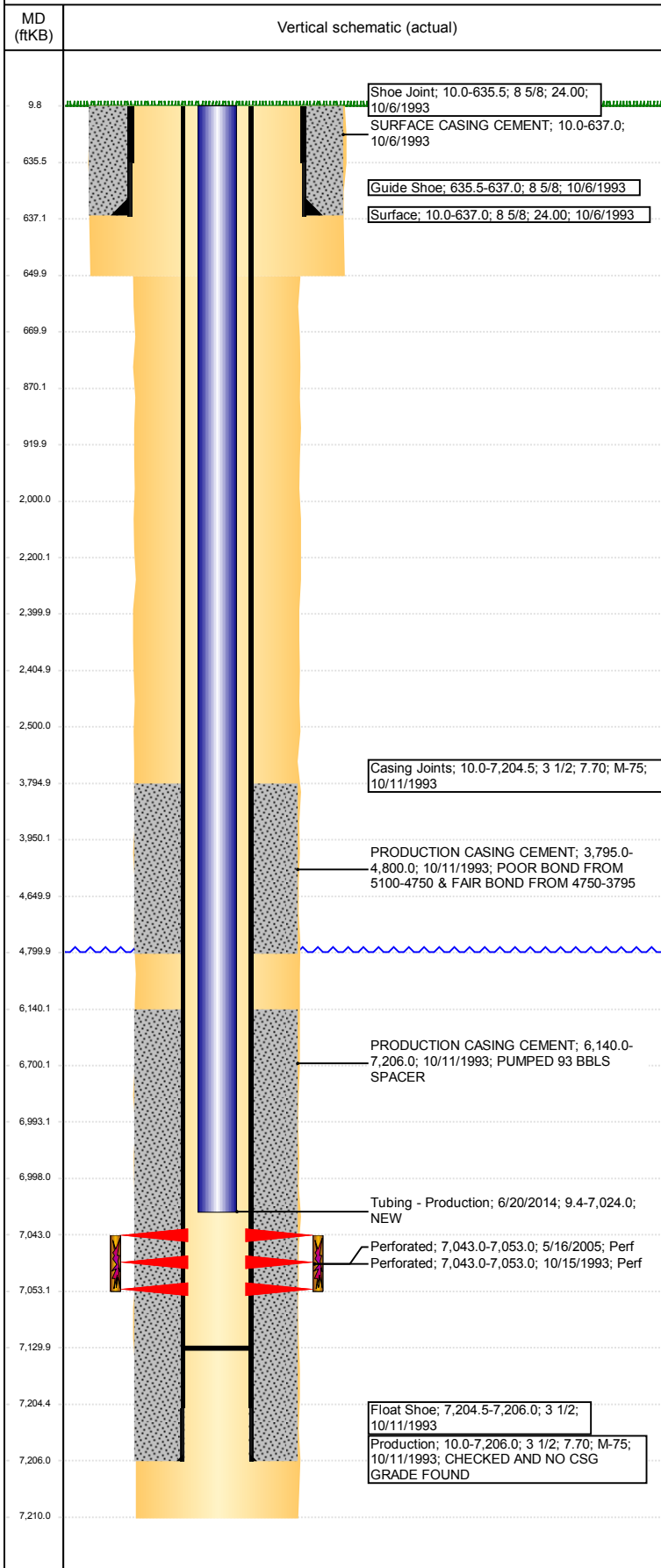


Wellbore Schematic Input Report

Well Name: HETTINGER D30-05

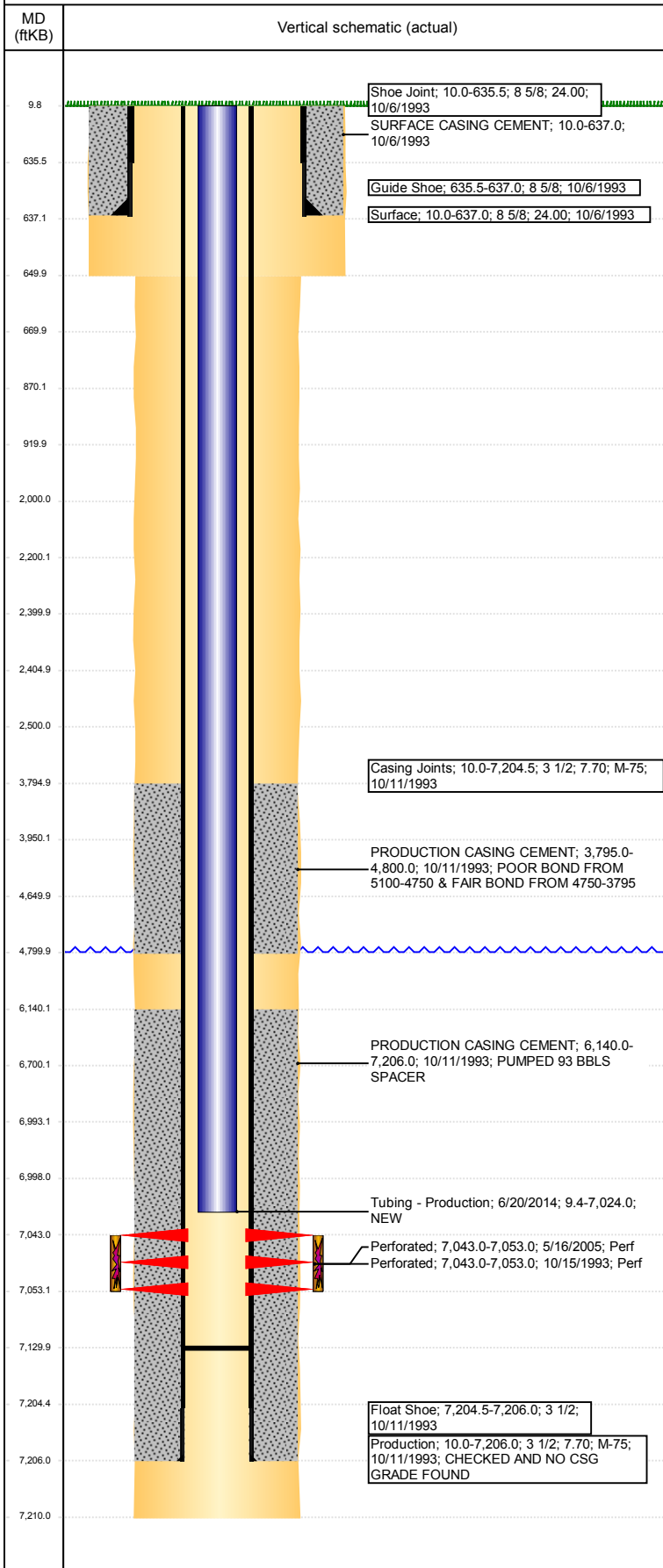
VERTICAL - ORIGINAL HOLE, 1/22/2018 12:56:10 PM



Well Header							
API 05-123-17345		Business Unit DJ BASIN		District 15	Well Config VERTICAL		
Original KB Elevation (ft) 4,796		KB - GL / MSL (ftKB) 10.00		Spud Date 10/6/1993		P & A Date	
Comment DESCREPCANCY - STATE REPORT TD IS 7200, DRILLING REPORT TD IS 7210							
Directions To Well WCR 30 & WCR 49, SOUTH 0.5, EAST 0.1, NOURTH INTO							
Congressional Location							
Quarter 3 SW	Quarter 4 NW	Section 30	Township 3	Twntshp N/S Dir N	Range 64	Range E/W Dir W	
Bottom Hole Location							
North-South Distance (ft)		From N or S Line		East-West Distance (ft)		From E or W Line	
Plug Back Total Depths							
Date	Depth (ftKB)	Method		Com			
10/14/1993	7,198.0	CASED HOLE LOG		DEPTH LOGGER ON CBL			
6/15/2005	7,151.0	TAG					
6/19/2014	7,130.0	WIRELINE TAG					
Wellbore Sections							
Section Des		Size (in)		Act Top, MD (ftKB)		Act Btm, MD (ftKB)	
SURFACE		12 1/4		10		650	
PRODUCTION		7 7/8		650		7,210	
Zone Statuses							
Zone Name	Status Date	Status	Fluid Type	Job	Prod Method		
CODELL	11/17/1993	PR		DRILLING/CO...			
CODELL	6/22/2005	PR		RE-FRAC & R...			
Casing Strings							
Surface, 637.0ftKB							
Casing Description Surface		Run Date 10/6/1993	OD (in) 8 5/8	Wt/Len (l... 24.00	Grade	Top, MD (ft... 10.0	
						MD (ftKB) 637.0	
Production, 7,206.0ftKB							
Casing Description Production		Run Date 10/11/1993	OD (in) 3 1/2	Wt/Len (l... 7.70	Grade M-75	Top, MD (ft... 10.0	
						MD (ftKB) 7,206.0	
Cement							
Description SURFACE CASING CEMENT				Top Depth (ftKB) 10.0		Bottom Depth (ftKB) 637.0	
Description PRODUCTION CASING CEMENT				Top Depth (ftKB) 3,795.0		Bottom Depth (ftKB) 4,800.0	
Description PRODUCTION CASING CEMENT				Top Depth (ftKB) 6,140.0		Bottom Depth (ftKB) 7,206.0	
Description				Top Depth (ftKB) 6,700.0		Bottom Depth (ftKB) 6,993.0	
Description Balance Plug				Top Depth (ftKB) 3,950.0		Bottom Depth (ftKB) 4,650.0	
Description Balance Plug				Top Depth (ftKB) 2,200.0		Bottom Depth (ftKB) 2,400.0	
Description Balance Plug				Top Depth (ftKB) 2,405.0		Bottom Depth (ftKB) 2,500.0	
Description Cement Squeeze				Top Depth (ftKB) 2,000.0		Bottom Depth (ftKB) 2,500.0	
Description Balance Plug				Top Depth (ftKB) 870.0		Bottom Depth (ftKB) 920.0	
Description Balance Plug				Top Depth (ftKB) 670.0		Bottom Depth (ftKB) 870.0	
Description Balance Plug				Top Depth (ftKB) 10.0		Bottom Depth (ftKB) 670.0	
Tubing Strings							
Tubing Description Tubing		Run Date 6/14/2005	String... 1.9	ID (in) 1.61	Wt (lb/ft) 2.76	Grade	Len (ft) 7,022.00
							Set De...
Tubing Components							
Item Des		OD (in)	Wt (lb/ft)	Grade	Jts	Len (ft)	Btm (ftKB)
Tubing		1.9	2.76		217	7,020.40	7,030.4
Seal Nipple		1.9			1	1.10	7,031.5
Notched collar		1.9			1	0.50	7,032.0
Tubing Description Tubing - Production		Run Date 6/20/2014	String... 1.9	ID (in) 1.61	Wt (lb/ft) 2.76	Grade J-55	Len (ft) 7,014.63
							Set De...

Well Name: HETTINGER D30-05

VERTICAL - ORIGINAL HOLE, 1/22/2018 12:56:11 PM



Tubing Components							
Item Des	OD (in)	Wt (lb/ft)	Grade	Jts	Len (ft)	Btm (ftKB)	Btm (TVD) (ftKB)
Cross Over	1 1/2			1	0.45	9.8	
Tubing	1.9	2.76	J-55	214	7,013.08	7,022.9	
Pump Seating Nipple	1 1/2			1	1.10	7,024.0	

Other In Hole				
Run Date	Des	OD (in)	Top (ftKB)	Btm (ftKB)
1/17/2018	Cement Retainer	4	2,400.0	2,405.0
1/17/2018	Cast Iron Bridge Plug	4	6,993.0	6,998.0

Logs			
Date	Type	Top, MD (ftKB)	Btm, MD (ftKB)
10/11/1993	COMPENSATED DENSITY	3,950.0	7,233.0
10/11/1993	INDUCTION	3,950.0	7,233.0
10/14/1993	CEMENT BOND	3,700.0	7,191.0
9/29/2014	GYRO	10.0	6,950.0

Perforation Data					
Linked Zone	Bnch/St g	Sum of Entered Shot Total	Top (ftKB)	Btm (ftKB)	Date
CODELL, ORIGINAL HOLE		0	2,500.00	2,500.00	1/17/2018
CODELL, ORIGINAL HOLE		48	7,043.00	7,053.00	5/16/2005
CODELL, ORIGINAL HOLE		40	7,043.00	7,053.00	10/15/1993
Total (Sum)		88			

Stimulation Intervals		
Start Date	Primary Job Type	
10/20/1993	DRILLING/COMPLETION - ORIGINAL	
Technical Result	Tech Result Details	Tech Result Note
Comment		
Start Date	Primary Job Type	
6/9/2005	RE-FRAC & RECOMPLETE	
Technical Result	Tech Result Details	Tech Result Note
Comment		