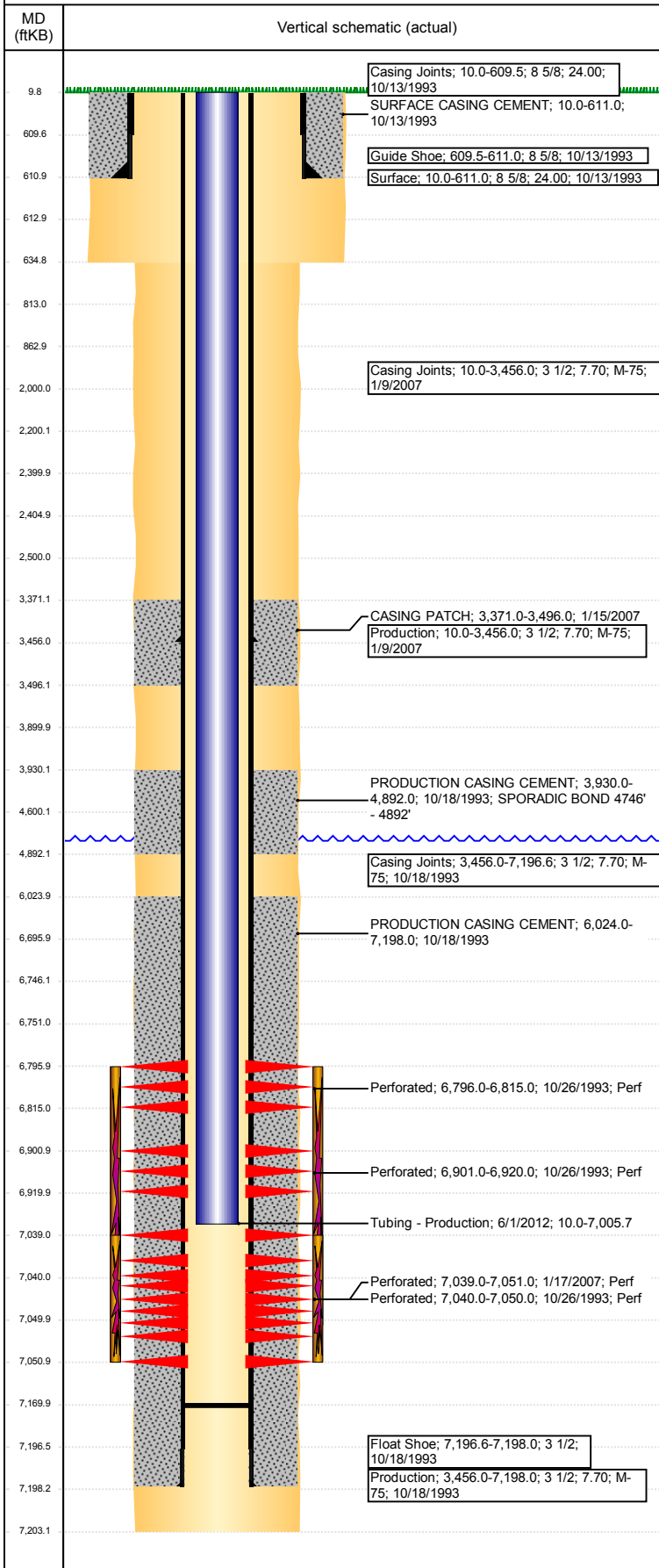


Well Name: HETTINGER D30-04

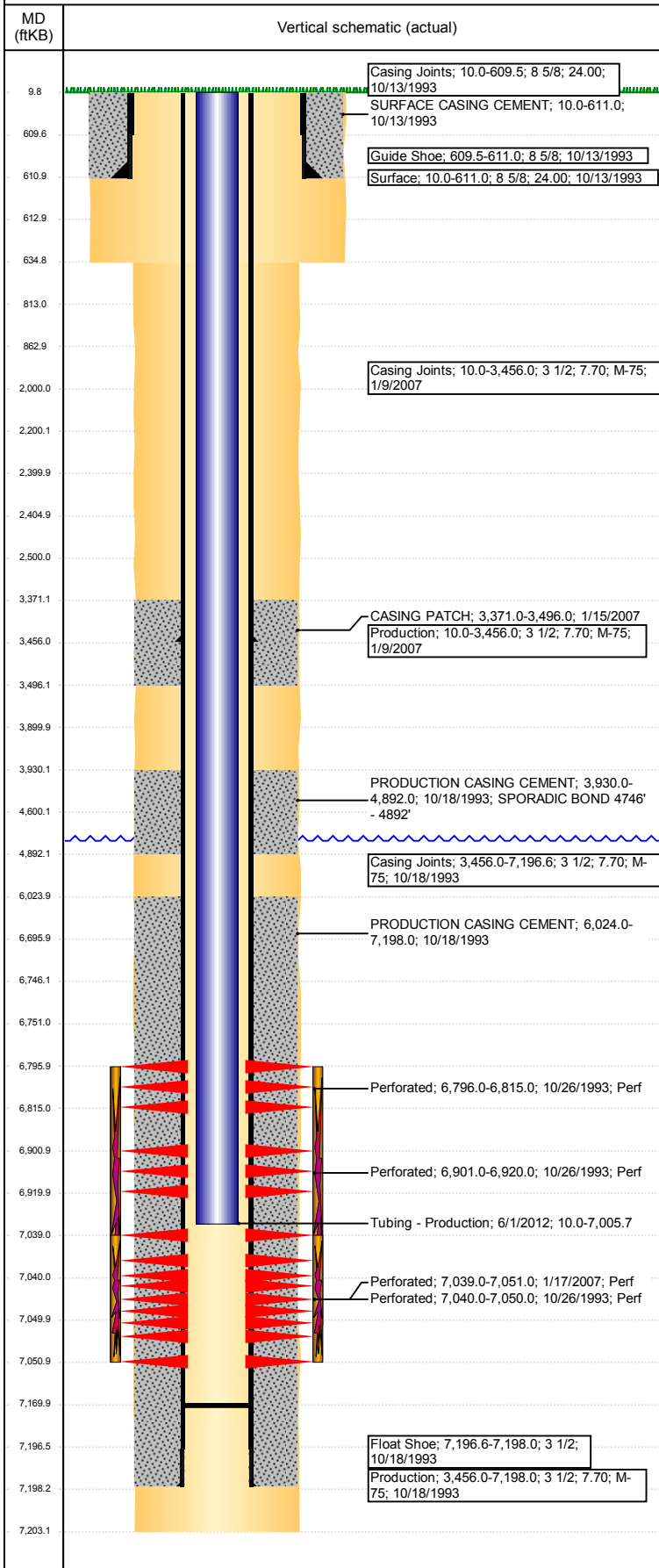
VERTICAL - ORIGINAL HOLE, 1/22/2018 12:55:00 PM



Well Header							
API 05-123-17343	Business Unit DJ BASIN		District 15		Well Config VERTICAL		
Original KB Elevation (ft) 4,792	KB - GL / MSL (ftKB) 10.00		Spud Date 10/12/1993		P & A Date		
Comment CASING PATCH @ 3454'; TIGHT 900'							
Directions To Well RD 30 & 49, E 1/10, S INTO.							
Congressional Location							
Quarter 3 NW	Quarter 4 NW	Section 30	Township 3	Twntshp N/S Dir N	Range 64	Range E/W Dir W	
Bottom Hole Location							
North-South Distance (ft)		From N or S Line		East-West Distance (ft)		From E or W Line	
Plug Back Total Depths							
Date	Depth (ftKB)	Method		Com			
10/18/1993	7,195.0	CASING TALLY		ORIGINAL PBTD			
10/23/1993	7,185.0	CASED HOLE LOG		DEPTH LOGGER			
5/31/2012	7,170.0	TAG		TAGGED FILL			
Wellbore Sections							
Section Des		Size (in)		Act Top, MD (ftKB)		Act Btm, MD (ftKB)	
SURFACE		12 1/4		10		635	
PRODUCTION		7 7/8		635		7,203	
Zone Statuses							
Zone Name	Status Date	Status	Fluid Type	Job	Prod Method		
CODELL	11/17/1993	PR		DRILLING/CO...			
CODELL	2/15/2007	PR		CASING REPA...			
NIOBRARA	11/17/1993	PR		DRILLING/CO...			
Casing Strings							
Surface, 611.0ftKB							
Casing Description Surface	Run Date 10/13/1993	OD (in) 8 5/8	Wt/Len (l...) 24.00	Grade	Top, MD (ft...) 10.0	MD (ftKB) 611.0	
Production, 3,456.0ftKB							
Casing Description Production	Run Date 1/9/2007	OD (in) 3 1/2	Wt/Len (l...) 7.70	Grade M-75	Top, MD (ft...) 10.0	MD (ftKB) 3,456.0	
Production, 7,198.0ftKB							
Casing Description Production	Run Date 10/18/1993	OD (in) 3 1/2	Wt/Len (l...) 7.70	Grade M-75	Top, MD (ft...) 10.0	MD (ftKB) 7,198.0	
Cement							
Description SURFACE CASING CEMENT				Top Depth (ftKB) 10.0	Bottom Depth (ftKB) 611.0		
Description PRODUCTION CASING CEMENT				Top Depth (ftKB) 3,930.0	Bottom Depth (ftKB) 4,892.0		
Description PRODUCTION CASING CEMENT				Top Depth (ftKB) 6,024.0	Bottom Depth (ftKB) 7,198.0		
Description CASING PATCH				Top Depth (ftKB) 3,371.0	Bottom Depth (ftKB) 3,496.0		
Description Dump Bail				Top Depth (ftKB) 6,696.0	Bottom Depth (ftKB) 6,746.0		
Description Balance Plug				Top Depth (ftKB) 3,900.0	Bottom Depth (ftKB) 4,600.0		
Description Balance Plug				Top Depth (ftKB) 2,405.0	Bottom Depth (ftKB) 2,500.0		
Description Balance Plug				Top Depth (ftKB) 2,200.0	Bottom Depth (ftKB) 2,400.0		
Description Cement Squeeze				Top Depth (ftKB) 2,000.0	Bottom Depth (ftKB) 2,500.0		
Description Balance Plug				Top Depth (ftKB) 813.0	Bottom Depth (ftKB) 863.0		
Description Balance Plug				Top Depth (ftKB) 613.0	Bottom Depth (ftKB) 813.0		
Description Balance Plug				Top Depth (ftKB) 10.0	Bottom Depth (ftKB) 613.0		
Tubing Strings							
Tubing Description Tubing	Run Date 2/9/2007	String...	ID (in)	Wt (lb/ft)	Grade	Len (ft)	Set De...
Tubing Components							
Item Des	OD (in)	Wt (lb/ft)	Grade	Jts	Len (ft)	Btm (ftKB)	Btm (TVD) (ftKB)
	1 1/2	2.75	J55	212		7,002.0	

Well Name: HETTINGER D30-04

VERTICAL - ORIGINAL HOLE, 1/22/2018 12:55:01 PM



Tubing Strings

Tubing Description	Run Date	String...	ID (in)	Wt (lb/ft)	Grade	Len (ft)	Set De...
Tubing - Production	6/1/2012	2 1/16	1.75	3.25	J-55	6,995.67	

Tubing Components

Item Des	OD (in)	Wt (lb/ft)	Grade	Jts	Len (ft)	Btm (ftKB)	Btm (TVD) (ftKB)
Tubing	2 1/16	3.25	J-55	217	6,994.47	7,004.5	
Collar	2 1/16	3.25	J-55	1	0.40	7,004.9	
Pump Seating Nipple	2 1/16	3.25	N-80	1	0.80	7,005.7	

Other In Hole

Run Date	Des	OD (in)	Top (ftKB)	Btm (ftKB)
1/17/2018	Cement Retainer	2.992	2,400.0	2,405.0
1/17/2018	Cast Iron Bridge Plug	2.992	6,746.0	6,751.0

Logs

Date	Type	Top, MD (ftKB)	Btm, MD (ftKB)
10/18/1993	COMPENSATED DENSITY	3,900.0	7,230.0
10/18/1993	INDUCTION	3,900.0	4,650.0
10/23/1993	CBL/CCL/GR	3,850.0	7,178.0
3/5/1994	TEMPERATURE SURVEY	0.0	7,178.0
3/24/1994	TEMPERATURE SURVEY	3,850.0	7,178.0
5/31/2012	GYRO	0.0	7,160.0

Perforation Data

Linked Zone	Bnch/St g	Sum of Entered Shot Total	Top (ftKB)	Btm (ftKB)	Date
CODELL, ORIGINAL HOLE		0	2,500.00	2,500.00	1/17/2018
NIOBRARA, ORIGINAL HOLE		3	6,796.00	6,815.00	10/26/1993
NIOBRARA, ORIGINAL HOLE		3	6,901.00	6,920.00	10/26/1993
CODELL, ORIGINAL HOLE		48	7,039.00	7,051.00	1/17/2007
CODELL, ORIGINAL HOLE		8	7,040.00	7,050.00	10/26/1993

Total (Sum)

	62			
--	----	--	--	--

Stimulation Intervals

Start Date	10/26/1993	Primary Job Type	DRILLING/COMPLETION - ORIGINAL
Technical Result		Tech Result Details	Tech Result Note
Comment			
Start Date	1/30/2007	Primary Job Type	CASING REPAIR
Technical Result		Tech Result Details	Tech Result Note
Comment	Possible Nio break thru		