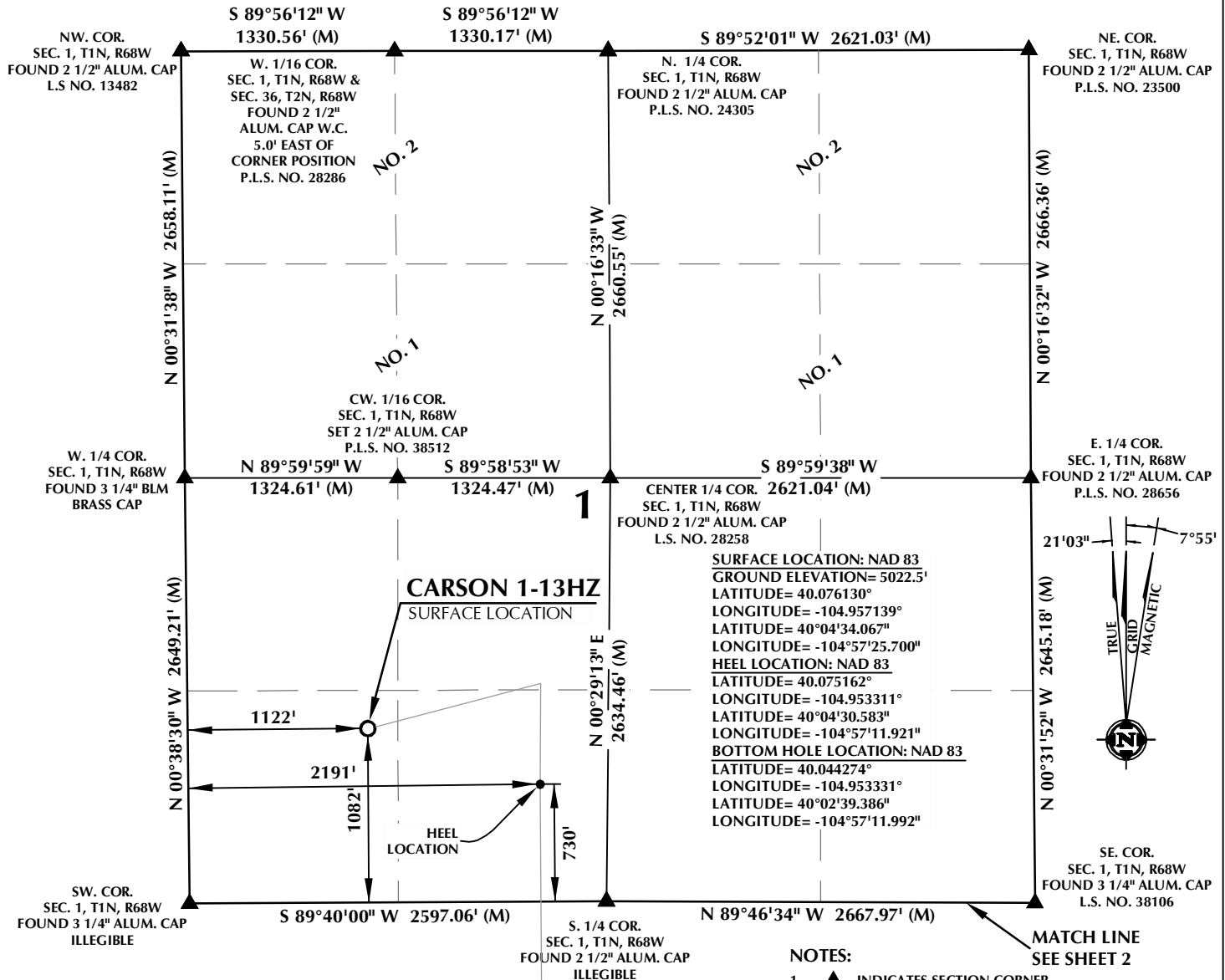


T1N, R68W



CERTIFICATE OF SURVEYOR:

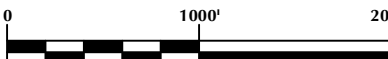
THIS IS TO CERTIFY THAT THE ABOVE PLAT WAS PREPARED FROM FIELD NOTES OF ACTUAL SURVEYS MADE BY ME OR UNDER MY SUPERVISION AND THAT THE SAME ARE TRUE AND CORRECT TO THE BEST OF MY KNOWLEDGE AND BELIEF. THIS CERTIFICATE DOES NOT REPRESENT A LAND SURVEY PLAT OR IMPROVEMENT SURVEY PLAT AS DEFINED BY C.R.S. 24-5-102 AND CANNOT BE RELIED UPON TO DETERMINE OWNERSHIP.

Randall K. French
 RANDALL K. FRENCH
 PROFESSIONAL LAND SURVEYOR
 COLORADO REGISTRATION NUMBER 38512
 8/31/17

NOTICE: ACCORDING TO COLORADO STATE LAW YOU MUST RECORD THIS PLAT WITHIN 90 DAYS OF THE DATE OF THE CERTIFICATION SHOWN HEREON. UPON ANY DEFECT IN THIS SURVEY WITHIN THREE YEARS AFTER YOU FIRST DISCOVER SUCH DEFECT, IN NO EVENT MAY ANY ACTION BASED UPON ANY DEFECT IN THIS SURVEY BE COMMENCED MORE THAN TEN YEARS FROM THE DATE ON THE CERTIFICATION SHOWN HEREON.

WELLBORE CONTINUES INTO SECTION 12

NOTE: MAGNETIC NORTH IS CURRENT AS OF 7/27/2017. MAGNETIC NORTH CHANGES WEST 0°06' PER YEAR.



SCALE: 1" = 1000'

NOTES:

- ▲ INDICATES SECTION CORNER
- INDICATES CALCULATED CORNER
- ELEVATION BASED ON NAVD88 (GEOID12B)
- BASIS OF BEARING DERIVED FROM COLORADO COORDINATE SYSTEM OF 1983 NORTH ZONE.
- ALL MEASURED DISTANCES ARE GRID. COMBINED SCALE FACTOR: .99972361 CALCULATED FROM THE S. 1/4 CORNER OF SECTION 1, T1N, R68W
- OPERATOR: TRAVIS HOLLAND / PDOP = 1.5
- SEE ADDENDUM TO WELL LOCATION CERTIFICATE FOR EXISTING IMPROVEMENTS WITHIN 500' OF THE WELL PAD.
- WELL FOOTAGES ARE MEASURED AT RIGHT ANGLES TO THE SECTION LINES.
- THE BOTTOM OF HOLE BEARS S00°19'31"E, 11252' FROM THE HEEL LOCATION.
- NO. 1 & NO. 2 AS SHOWN HEREON ARE GOVERNMENT LOTS 1 & 2 PER THE ORIGINAL GLO SURVEY

WELL PAD - CARSON 1-15HZ

CARSON 1-13HZ
 WELL LOCATION CERTIFICATE
 1082' FSL & 1122' FWL SWSW (SURFACE)
 730' FSL & 2191' FWL SESW (HEEL)
 LOCATED IN SECTION 1
 50' FSL & 2194' FWL SESW (BOTTOM)
 LOCATED IN SECTION 13
 T1N, R68W, 6TH P.M.
 WELD COUNTY, COLORADO

**Kerr-McGee Oil &
 Gas Onshore L.P.**
 1099 18th Street
 Denver, Colorado 80202



CONSULTING, LLC

SHERIDAN OFFICE
 1095 Saberton Avenue
 Sheridan, Wyoming 82801
 Phone 307-674-0609

LOVELAND OFFICE
 1635 Foxtrail Drive, Suite 204
 Loveland, Colorado 80538
 Phone 970-776-4331

| | | | | |
|---------------|---------|----------------|---------|-----------|
| DRAFTED BY: | LMO | CHECKED BY: | RKF | SHEET NO: |
| DATE DRAFTED: | 8/11/17 | DATE SURVEYED: | 6/28/17 | 1 |
| REVISED: | 8/31/17 | FILE NAME: | 16-182 | 1 OF 3 |

T1N, R68W

N. 1/4 COR.
SEC. 12, T1N, R68W
FOUND 2 1/2" ALUM. CAP
ILLEGIBLE

MATCH LINE
SEE SHEET 1

NW. COR.
SEC. 12, T1N, R68W
FOUND 3 1/4" ALUM. CAP
ILLEGIBLE

S 89°40'00" W 2597.06' (M)

N 89°46'34" W 2667.97' (M)

NE. COR.
SEC. 12, T1N, R68W
FOUND 3 1/4" ALUM. CAP
L.S. NO. 38106

N. 1/16 COR.
SEC. 11 & SEC. 12
T1N, R68W
FOUND 2" ALUM. CAP
P.L.S. NO. 20673

N 00°02'21" E
1332.16' (M)

N 00°20'06" W
2672.00' (M)

N 00°02'15" E
1328.78' (M)

N. 1/16 COR.
SEC. 7, T1N, R67W
SEC. 12, T1N, R68W
FOUND 3 1/4" ALUM. CAP
L.S. NO. 34990

N 00°00'11" E
1329.93' (M)

N 00°03'04" E
1327.29' (M)

W. 1/4 COR.
SEC. 12, T1N, R68W
FOUND 2 1/2" ALUM. CAP
P.L.S. NO. 23519

S 89°53'06" W
2613.62' (M)

CENTER 1/4 COR.
SEC. 12, T1N, R68W
FOUND 2 1/2" ALUM. CAP
P.L.S. NO. 24305

S 89°52'55" W
2650.28' (M)

E. 1/4 COR.
SEC. 12, T1N, R68W
FOUND 3 1/4" ALUM. CAP
L.S. NO. 38106

N 00°02'06" W 2665.90' (M)

N 00°20'14" W
2649.57' (M)

N 00°03'03" E 2626.54' (M)

21'03" 7°55'



SURFACE LOCATION: NAD 83
GROUND ELEVATION= 5022.5'
LATITUDE= 40.076130°
LONGITUDE= -104.957139°
LATITUDE= 40°04'34.067"
LONGITUDE= -104°57'25.700"
HEEL LOCATION: NAD 83
LATITUDE= 40.075162°
LONGITUDE= -104.953311°
LATITUDE= 40°04'30.583"
LONGITUDE= -104°57'11.921"
BOTTOM HOLE LOCATION: NAD 83
LATITUDE= 40.044274°
LONGITUDE= -104.953331°
LATITUDE= 40°02'39.386"
LONGITUDE= -104°57'11.992"

12

S 00°19'31" E 11252' GRID
S 00°01'32" W TRUE
S 08°14'31" E MAGNETIC

SW. COR.
SEC. 12, T1N, R68W
FOUND 2 1/2" ALUM. CAP
L.S. NO. 24305

S 89°31'43" W 2627.67' (M)

S. 1/4 COR.
SEC. 12, T1N, R68W
FOUND 2" ALUM. CAP
L.S. NO. 29425

S 89°22'51" W 2632.50' (M)

SE. COR.
SEC. 12, T1N, R68W
FOUND 3 1/4" ALUM. CAP
L.S. NO. 16406

MATCH LINE
SEE SHEET 3

CERTIFICATE OF SURVEYOR:

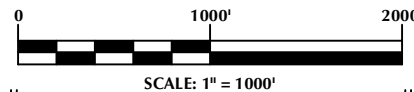
THIS IS TO CERTIFY THAT THE ABOVE PLAT WAS PREPARED FROM FIELD NOTES OF ACTUAL SURVEYS MADE BY ME OR UNDER MY SUPERVISION AND THAT THE SAME ARE TRUE AND CORRECT TO THE BEST OF MY KNOWLEDGE AND BELIEF. THIS CERTIFICATE DOES NOT REPRESENT A LAND SURVEY PLAT OR IMPROVEMENT SURVEY PLAT AS DEFINED BY C.R.S. 38-5-102 AND CANNOT BE RELIED UPON TO DETERMINE OWNERSHIP.

Randall K. French
38512
PROFESSIONAL LAND SURVEYOR
8/31/17
COLORADO REGISTRATION NUMBER 38512

NOTICE:
ACCORDING TO COLORADO STATE LAW YOU MUST RECORD THIS PLAT WITHIN THREE YEARS AFTER YOU FIRST DISCOVER SUCH DEFECT. IN NO EVENT MAY ANY ACTION BASED UPON ANY DEFECT IN THIS SURVEY BE COMMENCED MORE THAN TEN YEARS FROM THE DATE ON THE CERTIFICATION SHOWN HEREON.

WELLBORE CONTINUES
INTO SECTION 13

NOTE:
MAGNETIC NORTH IS CURRENT AS OF 7/27/2017.
MAGNETIC NORTH CHANGES WEST 0°06' PER YEAR.



SCALE: 1" = 1000'

NOTES:

- ▲ INDICATES SECTION CORNER
- INDICATES CALCULATED CORNER
- ELEVATION BASED ON NAVD88 (GEOID12B)
- BASIS OF BEARING DERIVED FROM COLORADO COORDINATE SYSTEM OF 1983 NORTH ZONE.
- ALL MEASURED DISTANCES ARE GRID.
COMBINED SCALE FACTOR: .99972361 CALCULATED FROM THE S. 1/4 CORNER OF SECTION 1, T1N, R68W
- OPERATOR: TRAVIS HOLLAND / PDOP = 1.5
- SEE ADDENDUM TO WELL LOCATION CERTIFICATE FOR EXISTING IMPROVEMENTS WITHIN 500' OF THE WELL PAD.
- WELL FOOTAGES ARE MEASURED AT RIGHT ANGLES TO THE SECTION LINES.
- THE BOTTOM OF HOLE BEARS S00°19'31"E, 11252' FROM THE HEEL LOCATION.

WELL PAD - CARSON 1-15HZ

CARSON 1-13HZ
WELL LOCATION CERTIFICATE
1082' FSL & 1122' FWL SWSW (SURFACE)
730' FSL & 2191' FWL SESW (HEEL)
LOCATED IN SECTION 1
50' FSL & 2194' FWL SESW (BOTTOM)
LOCATED IN SECTION 13
T1N, R68W, 6TH P.M.
WELD COUNTY, COLORADO

**Kerr-McGee Oil &
Gas Onshore L.P.**
1099 18th Street
Denver, Colorado 80202



CONSULTING, LLC

SHERIDAN OFFICE
1095 Saberton Avenue
Sheridan, Wyoming 82801
Phone 307-674-0609

LOVELAND OFFICE
1635 Foxtrail Drive, Suite 204
Loveland, Colorado 80538
Phone 970-776-4331

| | | | | |
|---------------|---------|----------------|---------|-----------|
| DRAFTED BY: | LMO | CHECKED BY: | RKF | SHEET NO: |
| DATE DRAFTED: | 8/11/17 | DATE SURVEYED: | 6/28/17 | 2 |
| REVISED: | 8/31/17 | FILE NAME: | 16-182 | 2 OF 3 |

T1N, R68W

NW. COR.
SEC. 13, T1N, R68W
FOUND 2 1/2" ALUM. CAP
L.S. NO. 24305

N. 1/4 COR.
SEC. 13, T1N, R68W
FOUND 2" ALUM. CAP
L.S. NO. 29425

NE. COR.
SEC. 13, T1N, R68W
FOUND 3 1/4" ALUM. CAP
L.S. NO. 16406

SURFACE LOCATION: NAD 83
GROUND ELEVATION= 5022.5'
LATITUDE= 40.076130°
LONGITUDE= -104.957139°
LATITUDE= 40°04'34.067"
LONGITUDE= -104°57'25.700"
HEEL LOCATION: NAD 83
LATITUDE= 40.075162°
LONGITUDE= -104.953311°
LATITUDE= 40°04'30.583"
LONGITUDE= -104°57'11.921"
BOTTOM HOLE LOCATION: NAD 83
LATITUDE= 40.044274°
LONGITUDE= -104.953331°
LATITUDE= 40°02'39.386"
LONGITUDE= -104°57'11.992"

W. 1/4 COR.
SEC. 13, T1N, R68W
FOUND 2 1/2" ALUM. CAP
P.L.S. NO. 24305

S 89°58'22" W
2622.48' (M)

S 89°58'07" W
2622.77' (M)

CENTER 1/4 COR.
SEC. 13, T1N, R68W
FOUND 3 1/4" ALUM. CAP
P.L.S. NO. 28258

E. 1/4 COR.
SEC. 13, T1N, R68W
FOUND 3 1/4" ALUM. CAP
L.S. NO. 38106

CS. 1/16 COR.
SEC. 13, T1N, R68W
FOUND 3 1/4" ALUM. CAP
P.L.S. NO. 28258

S. 1/4 COR.
SEC. 13, T1N, R68W
FOUND 2 1/2" ALUM. CAP
ILLEGIBLE

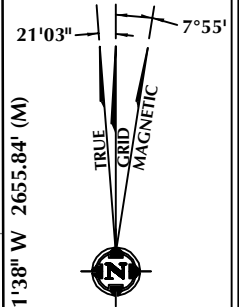
SW. COR.
SEC. 13, T1N, R68W
FOUND 3 1/4" ALUM. CAP
P.L.S. NO. 13155

N 89°25'29" W 2612.69' (M)

N 89°25'55" W 2613.03' (M)

SE. COR.
SEC. 13, T1N, R68W
FOUND 3 1/4" ALUM. CAP
P.L.S. NO. 36053

BOTTOM OF HOLE:
50' FSL & 2194' FWL



CERTIFICATE OF SURVEYOR:

THIS IS TO CERTIFY THAT THE ABOVE PLAT WAS PREPARED FROM FIELD NOTES OF ACTUAL SURVEYS MADE BY ME OR UNDER MY SUPERVISION AND THAT THE SAME ARE TRUE AND CORRECT TO THE BEST OF MY KNOWLEDGE AND BELIEF. THIS CERTIFICATE DOES NOT REPRESENT A LAND SURVEY PLAT OR IMPROVEMENT SURVEY PLAT AS DEFINED BY C.R.S. 38-5-102 AND CANNOT BE RELIED UPON TO DETERMINE OWNERSHIP.

Randall K. French
38512
PROFESSIONAL LAND SURVEYOR
8/31/17
COLORADO REGISTRATION NUMBER 38512

NOTICE:
ACCORDING TO COLORADO STATE LAW YOU MUST TAKE LEGAL ACTION BASED UPON ANY DEFECT IN THIS SURVEY WITHIN THREE YEARS AFTER YOU FIRST DISCOVER SUCH DEFECT. IN NO EVENT MAY ANY ACTION BASED UPON ANY DEFECT IN THIS SURVEY BE COMMENCED MORE THAN TEN YEARS FROM THE DATE ON THE CERTIFICATION SHOWN HEREON.

NOTE:
MAGNETIC NORTH IS CURRENT AS OF 7/27/2017.
MAGNETIC NORTH CHANGES WEST 0°06' PER YEAR.



SCALE: 1" = 1000'

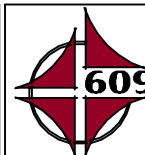
NOTES:

- ▲ INDICATES SECTION CORNER
- INDICATES CALCULATED CORNER
- ELEVATION BASED ON NAVD88 (GEOID12B)
- BASIS OF BEARING DERIVED FROM COLORADO COORDINATE SYSTEM OF 1983 NORTH ZONE.
- ALL MEASURED DISTANCES ARE GRID.
COMBINED SCALE FACTOR: .99972361 CALCULATED FROM THE S. 1/4 CORNER OF SECTION 1, T1N, R68W
OPERATOR: TRAVIS HOLLAND / PDOP = 1.5
- SEE ADDENDUM TO WELL LOCATION CERTIFICATE FOR EXISTING IMPROVEMENTS WITHIN 500' OF THE WELL PAD.
- WELL FOOTAGES ARE MEASURED AT RIGHT ANGLES TO THE SECTION LINES.
- THE BOTTOM OF HOLE BEARS S00°19'31"E, 11252' FROM THE HEEL LOCATION.

WELL PAD - CARSON 1-15HZ

CARSON 1-13HZ
WELL LOCATION CERTIFICATE
1082' FSL & 1122' FWL SWSW (SURFACE)
730' FSL & 2191' FWL SESW (HEEL)
LOCATED IN SECTION 1
50' FSL & 2194' FWL SESW (BOTTOM)
LOCATED IN SECTION 13
T1N, R68W, 6TH P.M.
WELD COUNTY, COLORADO

**Kerr-McGee Oil &
Gas Onshore L.P.**
1099 18th Street
Denver, Colorado 80202



CONSULTING, LLC

SHERIDAN OFFICE
1095 Saberton Avenue
Sheridan, Wyoming 82801
Phone 307-674-0609

LOVELAND OFFICE
1635 Foxtrail Drive, Suite 204
Loveland, Colorado 80538
Phone 970-776-4331

| | | | | |
|---------------|---------|----------------|---------|-----------|
| DRAFTED BY: | LMO | CHECKED BY: | RKF | SHEET NO: |
| DATE DRAFTED: | 8/11/17 | DATE SURVEYED: | 6/28/17 | 3 |
| REVISED: | 8/31/17 | FILE NAME: | 16-182 | 3 OF 3 |