



Kerr-McGee Oil & Gas Onshore LP

A subsidiary of Anadarko Petroleum Corporation

1099 18th Street
Denver, CO 80202
720-929-6000

December 6, 2017

Matt Lepore
Director, Colorado Oil and Gas Conservation Commission
Department of Natural Resources
The Chancery Building
1120 Lincoln Street, Suite 801
Denver, CO 80203

Re: **30 Day Certification Letter - 318A.e**
Carson 1-13HZ (Doc #401431008)
Township 1 North, Range 68 West
Section 1: SWSW
Unit Acreage: 800
Unit Spacing: 1N-68W-Sec. 1: SESW, SWSE;
1N-68W-Sec. 12: E2W2, W2E2;
1N-68W-Sec. 13: E2W2, W2E2;
1N-68W-Sec. 24: NENW, NWNE
Weld County, Colorado

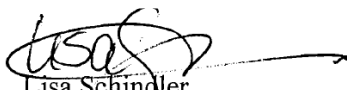
Dear Director Lepore:

Kerr-McGee Oil and Gas Onshore LP ("KMG") hereby certifies that a thirty (30) day notice has been given by certified mail to all mineral owners in the proposed wellbore spacing unit. We have not received any objections to such well location, proposed spacing unit, or additional producing formation. KMG hereby respectfully requests approval of this boundary well.

If there are any questions or issues regarding this permit, please contact Lisa Schindler at (720) 929-3091.

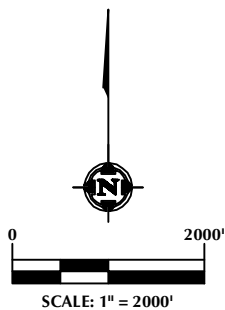
Very truly yours,

KERR-McGEE OIL AND GAS ONSHORE LP


Lisa Schindler
Sr. Regulatory Analyst

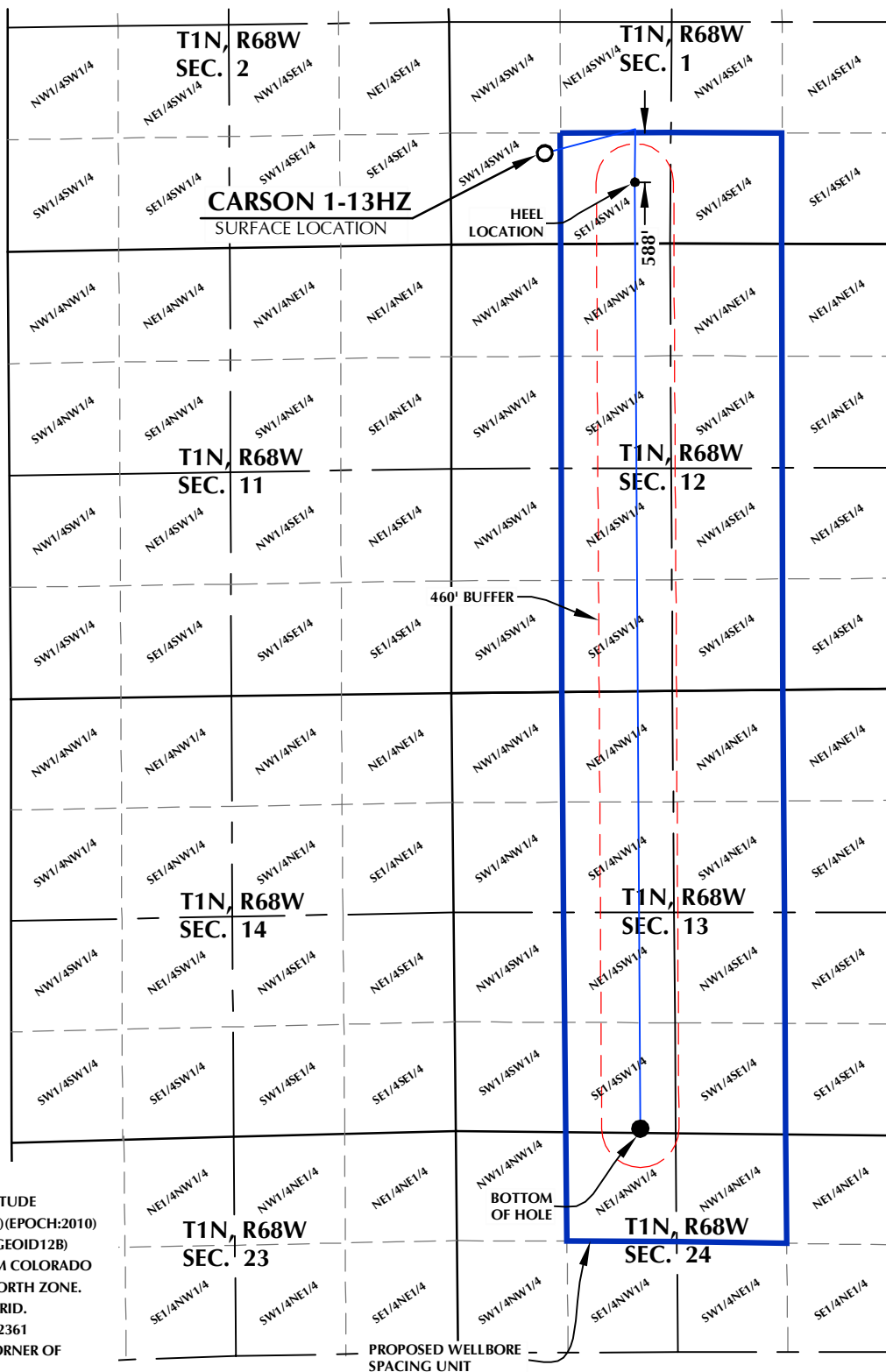
**CARSON 1-13HZ
WELLBORE SPACING UNIT**

SURFACE LOCATION: NAD 83
GROUND ELEVATION= 5022.5'
LATITUDE= 40.076130°
LONGITUDE= -104.957139°
LATITUDE= 40°04'34.067"
LONGITUDE= -104°57'25.700"
HEEL LOCATION: NAD 83
LATITUDE= 40.075162°
LONGITUDE= -104.953311°
LATITUDE= 40°04'30.583"
LONGITUDE= -104°57'11.921"
BOTTOM HOLE LOCATION: NAD 83
LATITUDE= 40.044274°
LONGITUDE= -104.953331°
LATITUDE= 40°02'39.386"
LONGITUDE= -104°57'11.992"



NOTES:

1. DRAWING LATITUDE AND LONGITUDE COORDINATES ARE NAD 83 (2011)(EPOCH:2010)
2. ELEVATION BASED ON NAVD88 (GEOID12B)
3. BASIS OF BEARING DERIVED FROM COLORADO COORDINATE SYSTEM OF 1983 NORTH ZONE.
4. ALL MEASURED DISTANCES ARE GRID. COMBINED SCALE FACTOR: .99972361 CALCULATED FROM THE S. 1/4 CORNER OF SECTION 1, T1N, R68W



WELL PAD - CARSON 1-15HZ

CARSON 1-13HZ
WELLBORE SPACING UNIT
1082' FSL & 1122' FWL SWSW (SURFACE)
730' FSL & 2191' FWL SESW (HEEL)
LOCATED IN SECTION 1
50' FSL & 2194' FWL SESW (BOTTOM)
LOCATED IN SECTION 13
T1N, R68W, 6TH P.M.
WELD COUNTY, COLORADO

**Kerr-McGee Oil &
Gas Onshore L.P.**
1099 18th Street
Denver, Colorado 80202



CONSULTING, LLC

SHERIDAN OFFICE
1095 Saberton Avenue
Sheridan, Wyoming 82801
Phone 307-674-0609

LOVELAND OFFICE
1635 Foxtrail Drive, Suite 204
Loveland, Colorado 80538
Phone 970-776-4331

DRAFTED BY:

LMO

CKED BY:

RKF

DATE DRAFTED:

8/11/17

DATE SURVEYED:

6/28/17

REVISÉ:

8/31/17

FILE NAME:

16-182