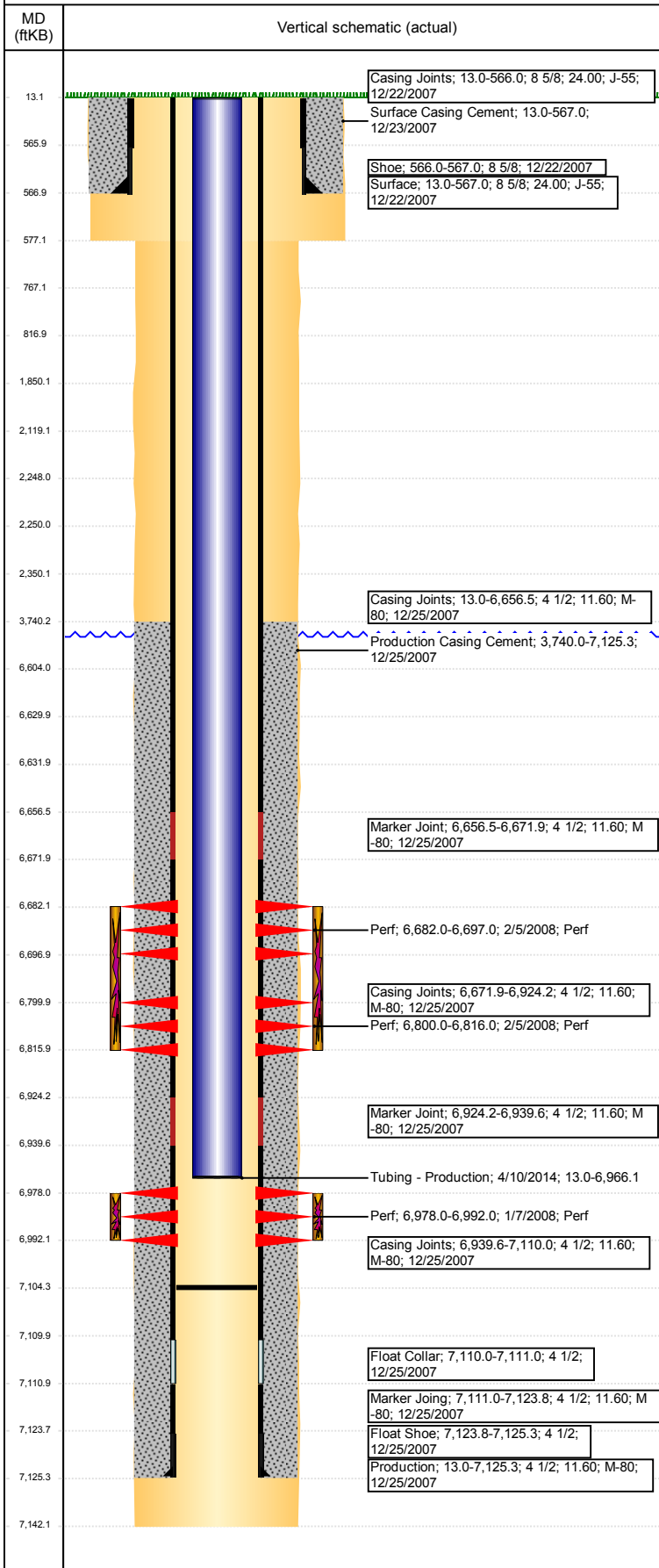


Wellbore Schematic Input Report

Well Name: HAMILTON F25-21

VERTICAL - ORIGINAL HOLE, 1/18/2018 2:50:29 PM



Well Header

API 05-123-26656	Business Unit DJ BASIN	District 15	Well Config VERTICAL
Original KB Elevation (ft) 4,697	KB - GL / MSL (ftKB) 13.00	Spud Date 12/22/2007	P & A Date

Comment

4/9/14- DRILLED CEMENT & CBP OUT & PUSHED REMNANTS TO BOTTOM. STATE SHOWS SHUT IN SINCE MAY 2017.

Directions To Well

RD 49 AND RD 54 W 300 YARDS SOUTH INTO TANK BATTERY W ALONG EDGE OF FIELD 6/10 TO Y TAKE LEFT FORK 3/10 SOUTHEAST EAST INTO.

Congressional Location

Quarter 3 NW	Quarter 4 SE	Section 25	Township 5	Twntshp N/S Dir N	Range 65	Range E/W Dir W
-----------------	-----------------	---------------	---------------	----------------------	-------------	--------------------

Bottom Hole Location

North-South Distance (ft)	From N or S Line	East-West Distance (ft)	From E or W Line
---------------------------	------------------	-------------------------	------------------

Plug Back Total Depths

Date	Depth (ftKB)	Method	Com
12/25/2007	7,111.0	CASING TALLY	TOP OF FLOAT COLLAR
1/3/2008	7,093.0	CASED HOLE LOG	DEPTH LOGGER ON CBL
12/18/2008	7,142.0	TAG	
4/9/2014	7,104.2	TAG	TBG TALLY/ 112' OF RAT HOLE

Wellbore Sections

Section Des	Size (in)	Act Top, MD (ftKB)	Act Btm, MD (ftKB)
SURFACE	12 1/4	13	577
PRODUCTION	7 7/8	577	7,142

Zone Statuses

Zone Name	Status Date	Status	Fluid Type	Job	Prod Method
CODELL	3/20/2008	PR	Water	DRILLING/CO...	Flowing
CODELL	2/1/2010	PR			
NIOBRARA	3/20/2008	PR	Water	DRILLING/CO...	Flowing
NIOBRARA	2/1/2010	PR			
NIOBRARA	12/21/2011	PR			
NIOBRARA	10/27/2016	SI			

Casing Strings

Surface, 567.0ftKB

Casing Description	Run Date	OD (in)	Wt/Len (l...)	Grade	Top, MD (ft...)	MD (ftKB)
Surface	12/22/2007	8 5/8	24.00	J-55	13.0	567.0

Production, 7,125.3ftKB

Casing Description	Run Date	OD (in)	Wt/Len (l...)	Grade	Top, MD (ft...)	MD (ftKB)
Production	12/25/2007	4 1/2	11.60	M-80	13.0	7,125.3

Cement

Description	Top Depth (ftKB)	Bottom Depth (ftKB)
Surface Casing Cement	13.0	567.0
Production Casing Cement	3,740.0	7,125.3
DUMP BAIL	6,604.0	6,630.0
SHOE PLUG	767.0	817.0
SHOE PLUG	13.1	767.0
COURTESY PLUG	2,250.0	2,350.0
COURTESY PLUG	2,119.0	2,248.0
COURTESY PLUG	1,850.0	2,350.0

Tubing Strings

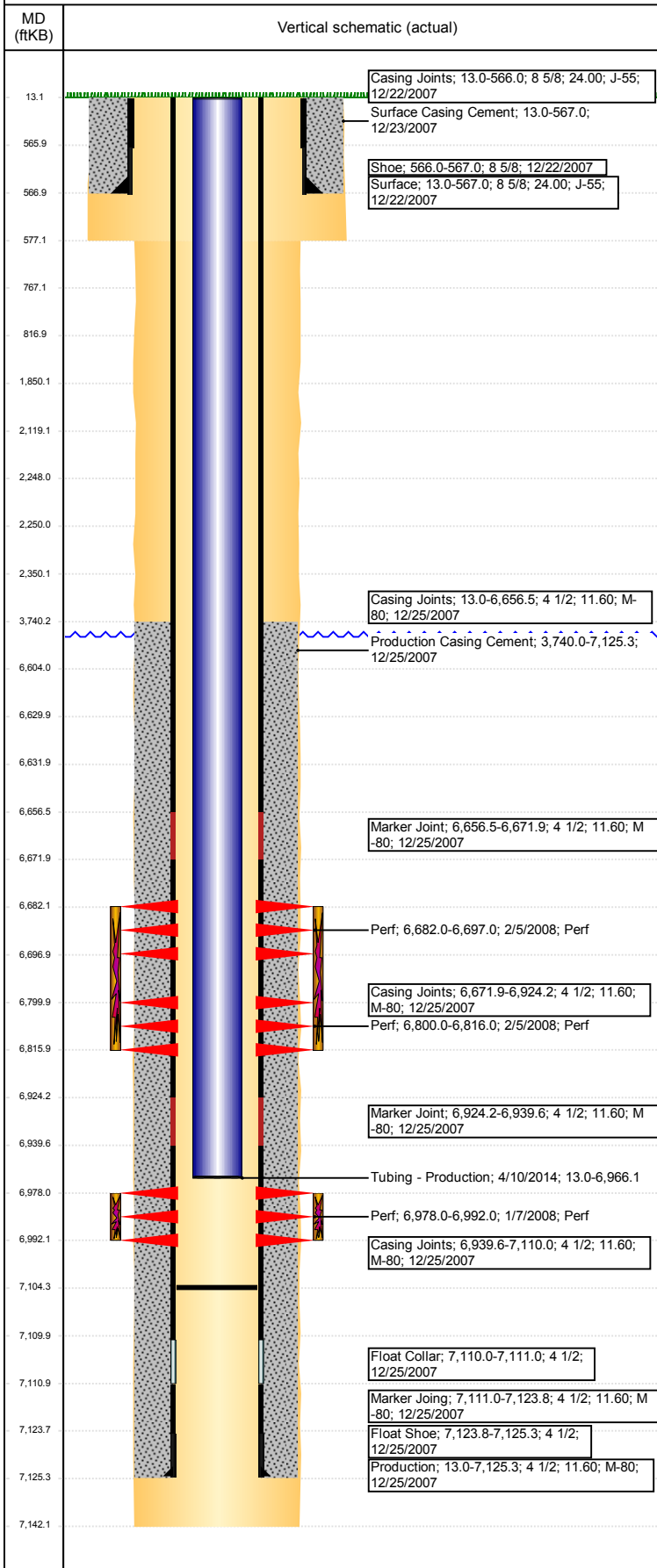
Tubing Description	Run Date	String...	ID (in)	Wt (lb/ft)	Grade	Len (ft)	Set De...
Tubing - Production	12/18/2008	2 3/8	2.00	4.70	J-55	6,947.15	

Tubing Components

Item Des	OD (in)	Wt (lb/ft)	Grade	Jts	Len (ft)	Btm (ftKB)	Btm (TVD) (ftKB)
Tubing Pup Joint	2 3/8	4.70	J-55	3	26.00	37.0	
Tubing	2 3/8	4.70	J-55	225	6,919.05	6,956.1	
Pump Seating	2 3/8			1	1.20	6,957.3	
Nipple							
Blade Bit	3 7/8			1	0.90	6,958.2	

Well Name: HAMILTON F25-21

VERTICAL - ORIGINAL HOLE, 1/18/2018 2:50:29 PM



Tubing Strings							
Tubing Description Tubing - Production	Run Date 1/30/2014	String... 2 3/8	ID (in) 2.00	Wt (lb/ft) 4.70	Grade J-55	Len (ft) 5,981.60	Set De...
Tubing Components							
Item Des	OD (in)	Wt (lb/ft)	Grade	Jts	Len (ft)	Btm (ftKB)	Btm (TVD) (ftKB)
EUE 8rd Tubing	2 3/8	4.70	J-55	195	5,979.60	5,989.6	
Seal Nipple	2 3/8			1	1.00	5,990.6	
Blade Bit	2 3/8			1	1.00	5,991.6	
Tubing Description Tubing - Production	Run Date 4/10/2014	String... 2 3/8	ID (in) 2.00	Wt (lb/ft) 4.70	Grade J-55	Len (ft) 6,953.06	Set De...
Tubing Components							
Item Des	OD (in)	Wt (lb/ft)	Grade	Jts	Len (ft)	Btm (ftKB)	Btm (TVD) (ftKB)
Pup Joint	2 3/8	4.70	J-55	1	10.10	23.1	
EUE 8rd Tubing	2 3/8	4.70	J-55	226	6,941.43	6,964.5	
Pump Seating Nipple	2 3/8	4.70	N-80	1	1.13	6,965.7	
Notched collar	2 3/8	4.70	J-55	1	0.40	6,966.1	
Other In Hole							
Run Date	Des			OD (in)	Top (ftKB)	Btm (ftKB)	
11/13/2017	Cast Iron Bridge Plug			4	6,630.0	6,632.0	
1/11/2018	CICR			4	2,248.0	2,250.0	
Logs							
Date	Type				Top, MD (ftKB)	Btm, MD (ftKB)	
12/25/2007	Caliper/Comp.Density/Neutron/GR/SP /ML				2,550.0	7,117.0	
12/25/2007	DIL/GR/SP/Caliper				567.0	7,137.0	
1/3/2008	CBL/CCL/GR				3,630.0	7,086.0	
1/22/2013	GYRO				13.0	6,900.0	
Perforation Data							
Linked Zone	Bnch/St g	Sum of Entered Shot Total	Top (ftKB)	Btm (ftKB)	Date		
		0	2,350.00	2,350.00	1/11/2018		
NIOBRARA, ORIGINAL HOLE	A	60	6,682.00	6,697.00	2/5/2008		
NIOBRARA, ORIGINAL HOLE	B	64	6,800.00	6,816.00	2/5/2008		
CODELL, ORIGINAL HOLE		56	6,978.00	6,992.00	1/7/2008		
Total (Sum)		180					
Stimulation Intervals							
Start Date 2/5/2008	Primary Job Type DRILLING/COMPLETION - ORIGINAL						
Technical Result Success		Tech Result Details According to Plan			Tech Result Note		
Comment (CODELL) TREATMENT WENT WELL NO ISSUES TO REPORT							
Start Date 2/5/2008	Primary Job Type DRILLING/COMPLETION - ORIGINAL						
Technical Result Success		Tech Result Details According to Plan			Tech Result Note		
Comment (NIOBRARA) TREATMENT WENT WELL NO ISSUES TO REPORT							