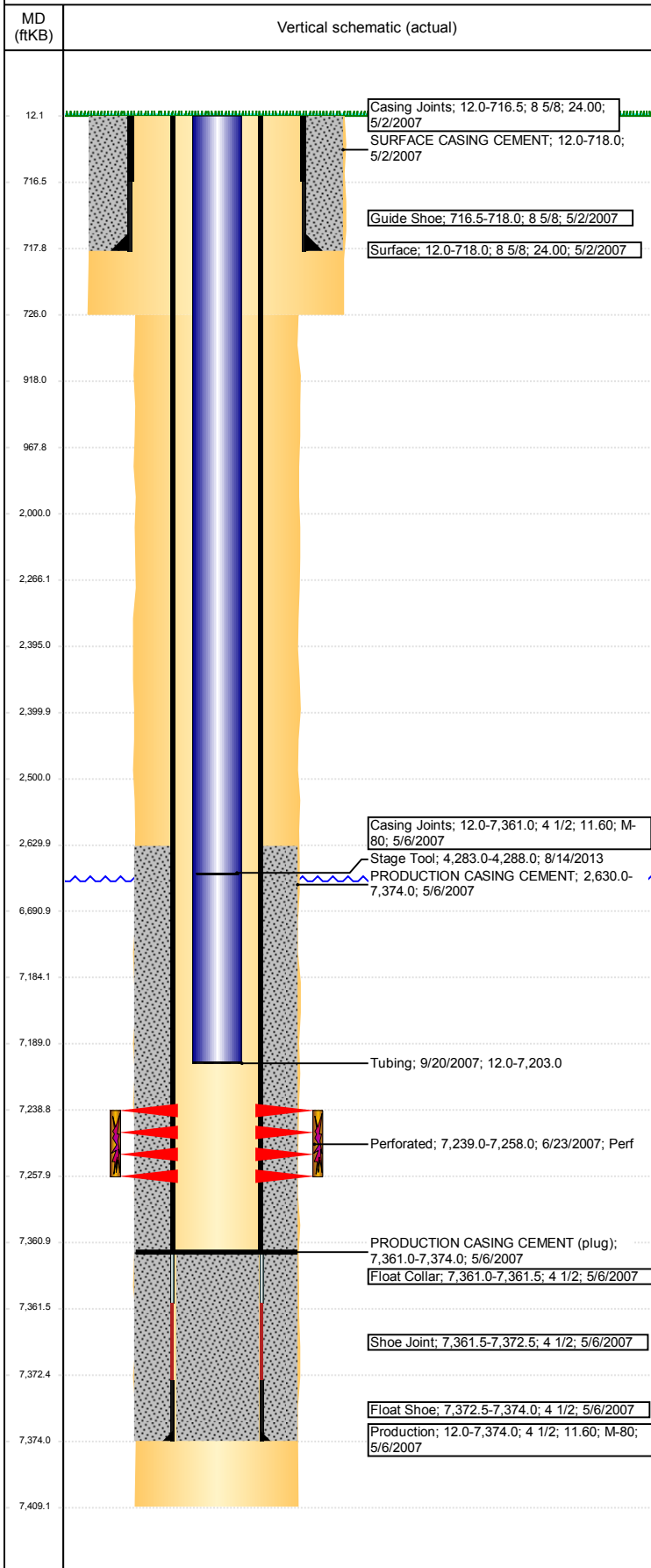


**Well Name: BURBACH 15-22**

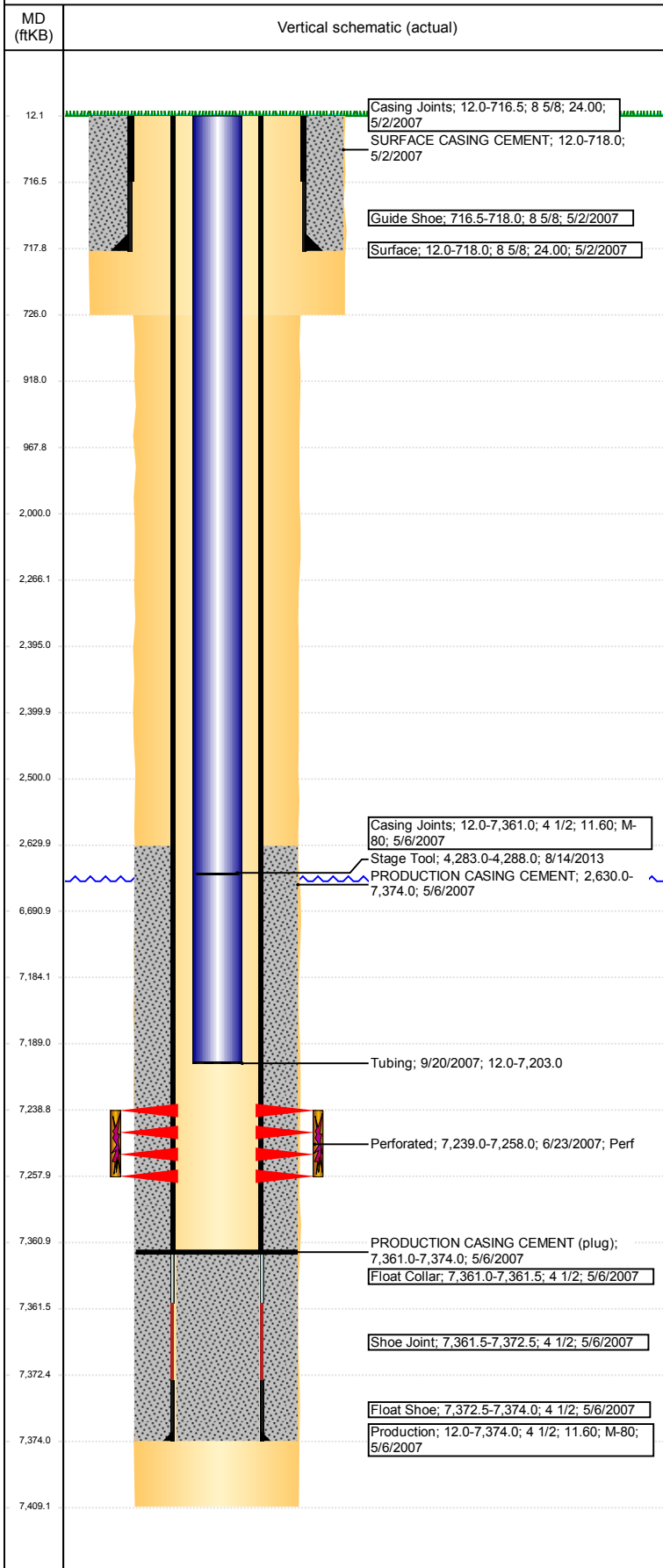
VERTICAL - ORIGINAL HOLE, 1/17/2018 2:47:37 PM



Well Header							
API 05-123-24936	Business Unit DJ BASIN		District 15		Well Config VERTICAL		
Original KB Elevation (ft) 4,812	KB - GL / MSL (ftKB) 12.00		Spud Date 5/2/2007		P & A Date		
Comment							
Directions To Well							
Congressional Location							
Quarter 3 NW	Quarter 4 NW	Section 15	Township 6	Twntshp N/S Dir N	Range 66	Range E/W Dir W	
Bottom Hole Location							
North-South Distance (ft)		From N or S Line		East-West Distance (ft)		From E or W Line	
Plug Back Total Depths							
Date	Depth (ftKB)	Method		Com			
5/6/2007	7,361.0	CASING TALLY		TOP OF FLOAT COLLAR			
6/19/2007	7,326.0	CASED HOLE LOG		CBL DEPTH LOGGER			
9/20/2007	7,361.0	TAG		MOST RECENT C/O			
Wellbore Sections							
Section Des		Size (in)		Act Top, MD (ftKB)		Act Btm, MD (ftKB)	
SURFACE		12 1/4		12		726	
PRODUCTION		7 7/8		726		7,409	
Zone Statuses							
Zone Name	Status Date	Status	Fluid Type	Job	Prod Method		
CODELL	8/8/2007	PR	Water	DRILLING/CO...	Flowing		
CODELL	5/23/2011	PR					
CODELL	6/4/2015	PR					
Casing Strings							
Surface, 718.0ftKB							
Casing Description Surface	Run Date 5/2/2007	OD (in) 8 5/8	Wt/Len (l... 24.00	Grade	Top, MD (ft... 12.0	MD (ftKB) 718.0	
Production, 7,374.0ftKB							
Casing Description Production	Run Date 5/6/2007	OD (in) 4 1/2	Wt/Len (l... 11.60	Grade M-80	Top, MD (ft... 12.0	MD (ftKB) 7,374.0	
Cement							
Description SURFACE CASING CEMENT				Top Depth (ftKB) 12.0		Bottom Depth (ftKB) 718.0	
Description PRODUCTION CASING CEMENT				Top Depth (ftKB) 2,630.0		Bottom Depth (ftKB) 7,374.0	
Description Cement Plug				Top Depth (ftKB) 6,691.0		Bottom Depth (ftKB) 7,184.0	
Description Cement Squeeze				Top Depth (ftKB) 2,000.0		Bottom Depth (ftKB) 2,500.0	
Description Balance Plug				Top Depth (ftKB) 2,400.0		Bottom Depth (ftKB) 2,500.0	
Description Cement Plug				Top Depth (ftKB) 2,266.0		Bottom Depth (ftKB) 2,395.0	
Description Shoe Plug				Top Depth (ftKB) 918.0		Bottom Depth (ftKB) 968.0	
Description Shoe Plug				Top Depth (ftKB) 12.0		Bottom Depth (ftKB) 918.0	
Tubing Strings							
Tubing Description Tubing	Run Date 9/20/2007	String... 2 3/8	ID (in)	Wt (lb/ft)	Grade	Len (ft) 7,191.00	Set De...
Tubing Components							
Item Des	OD (in)	Wt (lb/ft)	Grade	Jts	Len (ft)	Btm (ftKB)	Btm (TVD) (ftKB)
Tubing	2 3/8			234	7,189.50	7,201.5	
Seat Nipple	2 3/8			1	1.00	7,202.5	
Notched collar	2 3/8			1	0.50	7,203.0	
Other In Hole							
Run Date	Des				OD (in)	Top (ftKB)	Btm (ftKB)
1/15/2018	Cast Iron Bridge Plug				3.99	7,184.0	7,189.0
1/15/2018	Cement Retainer				3.99	2,395.0	2,400.0
Logs							
Date	Type				Top, MD (ftKB)		Btm, MD (ftKB)

**Well Name: BURBACH 15-22**

VERTICAL - ORIGINAL HOLE, 1/17/2018 2:47:38 PM



## Perforation Data

Linked Zone	Bnch/St g	Sum of Entered Shot Total	Top (ftKB)	Btm (ftKB)	Date
CODELL, ORIGINAL HOLE		0	2,500.00	2,500.00	1/15/2018
		76	7,239.00	7,258.00	6/23/2007
<b>Total (Sum)</b>		<b>76</b>			

## Stimulation Intervals

Start Date <b>6/26/2007</b>	Primary Job Type <b>DRILLING/COMPLETION - ORIGINAL</b>	
Technical Result	Tech Result Details	Tech Result Note

Comment