

Inspection Photos  
Location Name: Ridgeview 32-16-1  
API: 05-081-07747



**Photo 1. Fluid in flare pit.**  
**11/15/2017**

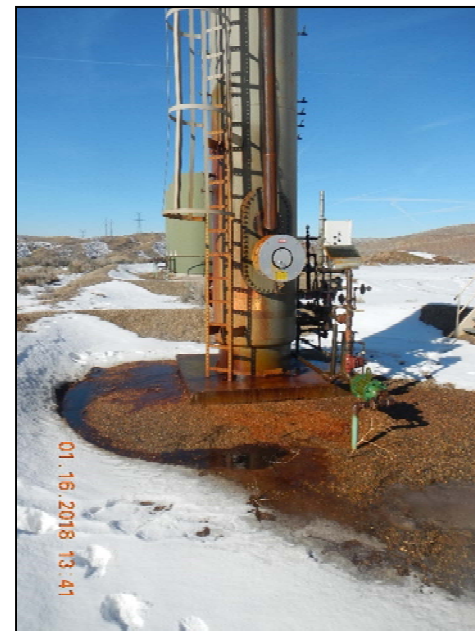


**Photo 2. Current pit conditions unable to see fluid due to snow cover.**  
**1/16/2018**

Inspection Photos  
Location Name: Ridgeview 32-16-1  
API: 05-081-07747



**Photo 3. Fluid in separator berm.**  
**11/15/2017**



**Photo 4. Fluid in separator berm.**  
**1/16/2018**



Inspection Photos  
Location Name: Ridgeview 32-16-1  
API: 05-081-07747



**Photo 5. Fluid in separator berm.**  
**11/15/2017**



**Photo 6. Fluid in separator berm.**  
**1/16/2018**

Inspection Photos  
Location Name: Ridgeview 32-16-1  
API: 05-081-07747



**Photo 7. Fluid at pump jack motor, no containment.**  
**11/15/2017**



**Photo 8. Fluid at pump jack motor, no containment.**  
**1/16/2018**



Inspection Photos  
Location Name: Ridgeview 32-16-1  
API: 05-081-07747



**Photo 9. Fluid at pump jack motor, no containment.**  
**11/15/2017**



**Photo 10. Fluid at pump jack motor, no containment.**  
**1/16/2018**