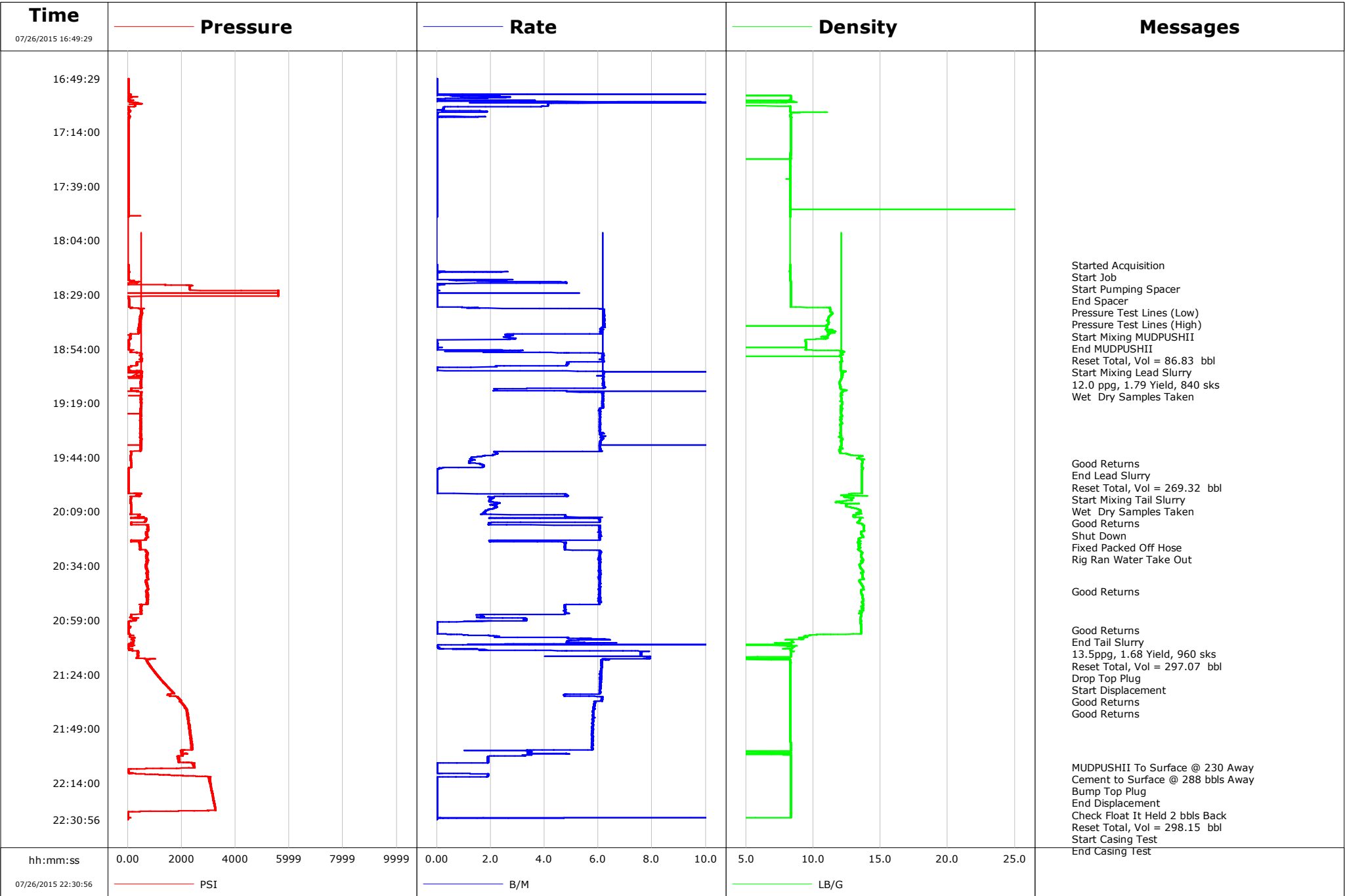


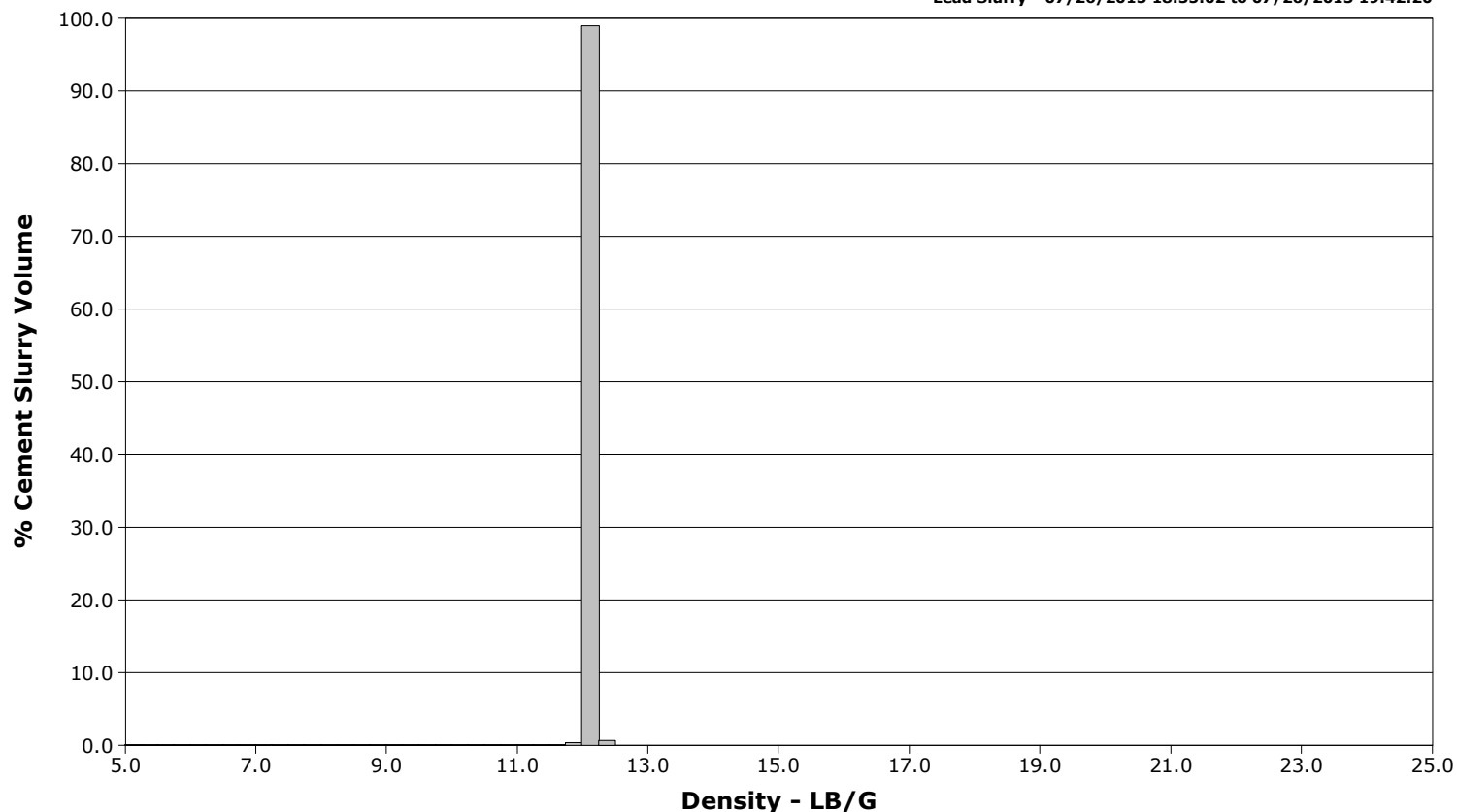
Well	Viper Pyro State 16N2-10HZ	Client	Anadarko
Field	Wattenberg	SIR No.	D5VO-00706
Engineer	Wayne Silvester/Luis Evans	Job Type	Monobore
Country	United States	Job Date	07-26-2015



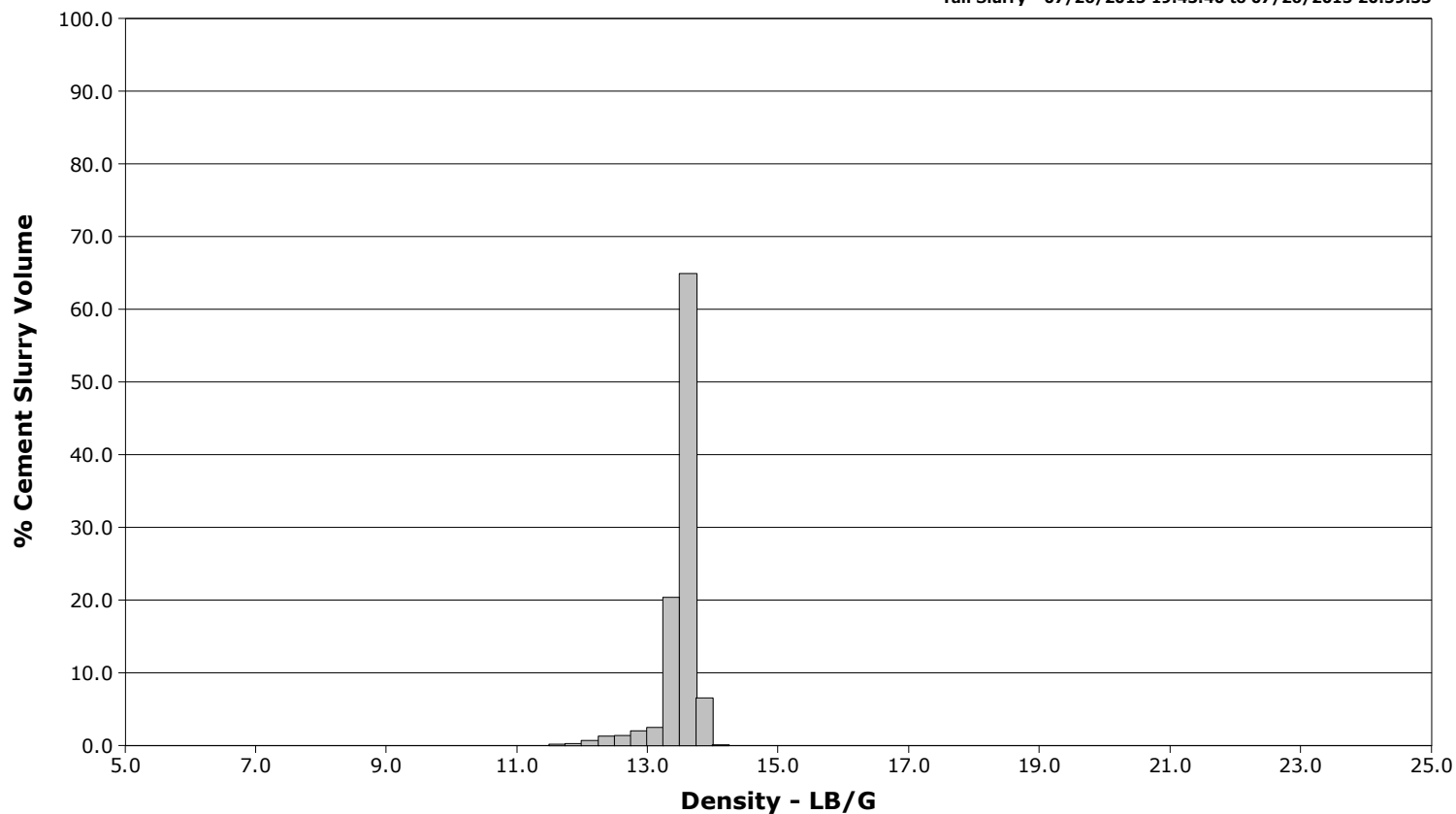
Well Viper Pyro
Field Wattenberg
Engineer Wayne Silvester/Luis Evans
Country United States

Client Anadarko
SIR No. D5VO-00706
Job Type Monobore
Job Date 07-26-2015

Lead Slurry - 07/26/2015 18:55:02 to 07/26/2015 19:42:20



Tail Slurry - 07/26/2015 19:43:40 to 07/26/2015 20:59:33



Cementing Service Report

				Customer Anadarko			Job Number D5VO-00706				
Well Viper Pyro 16N2-10HZ			Location (legal) 217304			Schlumberger Location Cheyenne			Job Start Jul/26/2015		
Field Wattenberg		Formation Name/Type Shale		Deviation deg 2957 psi		Bit Size 8.5 in		Well MD 12566.3 ft		Well TVD 12659.0 ft	
County Weld		State/Province Colorado		BHP		BHST 228 degF		BHCT 223 degF		Pore Press. Gradient lb/gal	
Well Master 0631633578		API/UWI 05123414310000									
Rig Name P462		Drilled For Oil & Gas		Service Via Land		Casing/ Liner					
						Depth, ft		Size, in		Weight, lb/ft	
Offshore Zone		Well Class New		Well Type Re-entry		12659.0		5.5		17.0	
						0.0		0.0		0.0	
Drilling Fluid Type LT OBM		Max. Density 8.90 lb/gal		Plastic Viscosity cP		Tubing/Drill Pipe					
						T/D		Depth, ft		Size, in	
Service Line Cementing		Job Type Monobore									
Max. Allowed Tub. Press psi		Max. Allowed Ann. Press psi		WH Connection 5 1/2		Perforations/Open Hole					
						Top, ft		Bottom, ft		shot/ft	
						ft		ft		Total Interval ft	
						ft		ft		Diameter in	
						ft		ft			
						Treat Down Casing		Displacement 298.0 bbl		Packer Type ft	
						Tubing Vol. bbl		Casing Vol. 300.0 bbl		Annular Vol. bbl	
										Openhole Vol. bbl	
Casing/Tubing Secured <input checked="" type="checkbox"/>		1 Hole Vol. Circulated prior to Cement <input checked="" type="checkbox"/>				Casing Tools		Squeeze Job			
Lift Pressure 2500 psi						Shoe Type Float		Squeeze Type			
Pipe Rotated <input type="checkbox"/>		Pipe Reciprocated <input type="checkbox"/>				Shoe Depth 12659.0 ft		Tool Type			
No. Centralizers		Top Plugs 1		Bottom Plugs 1		Stage Tool Type		Tool Depth ft			
Cement Head Type Single						Stage Tool Depth ft		Tail Pipe Size in			
Job Scheduled For Jul/26/2015		Arrived on Location Jul/26/2015		Leave Location Jul/26/2015		Collar Type Float		Tail Pipe Depth ft			
						Collar Depth 12566.3 ft		Sqz. Total Vol. bbl			
Date	Time 24-hr clock	Flow Rate B/M	Density LB/G	Volume BBL	CPF1_PRESS PSI	Message					
07/26/2015	16:49:29	0.0	-0.03	0.0	21	Water Test Complete					
07/26/2015	16:54:30	0.0	-0.03	0.0	21						
07/26/2015	16:59:31	1.8	1.17	0.0	85						
07/26/2015	17:04:32	1.8	8.32	0.0	91						
07/26/2015	17:09:33	0.0	8.33	0.0	23						
07/26/2015	17:14:34	0.0	8.33	0.0	24						
07/26/2015	17:19:35	0.0	8.33	0.0	25						
07/26/2015	17:24:36	0.0	8.32	0.0	25						
07/26/2015	17:29:37	0.0	8.32	0.0	23						
07/26/2015	17:34:38	0.0	8.32	0.0	25						
07/26/2015	17:39:39	0.0	8.32	0.0	25						
07/26/2015	17:44:40	0.0	8.32	0.0	23						
07/26/2015	17:49:41	0.0	8.32	0.0	24						
07/26/2015	18:17:37	0.0	8.32	0.0	20	Start Job					
07/26/2015	18:18:05	0.0	8.32	0.0	21	Start Pumping Spacer					
07/26/2015	18:19:47	0.0	8.31	0.8	27						
07/26/2015	18:22:43	2.5	8.31	0.9	213	End Spacer					
07/26/2015	18:24:48	0.0	8.33	5.3	2398						
07/26/2015	18:25:14	0.0	8.33	5.3	2299	Pressure Test Lines (Low)					
07/26/2015	18:27:22	0.0	8.33	5.3	5585	Pressure Test Lines (High)					
07/26/2015	18:29:49	0.0	8.33	5.3	806						

Well			Field		Job Start		Customer		Job Number	
Viper Pyro 16N2-10HZ			Wattenberg		Jul/26/2015		Anadarko		D5VO-00706	
Date	Time 24-hr clock	Flow Rate B/M	Density LB/G	Volume BBL	CPF1_PRESS PSI	Message				
07/26/2015	18:36:27	6.2	11.25	7.2	516	Start Mixing MUDPUSHII				
07/26/2015	18:39:51	6.2	11.13	28.3	465					
07/26/2015	18:44:52	6.1	10.98	59.4	417					
07/26/2015	18:50:25	0.0	9.42	0.2	24	End MUDPUSHII				
07/26/2015	18:50:38	0.0	9.44	0.2	31	Reset Total, Vol = 86.83 bbl				
07/26/2015	18:54:54	3.1	12.02	1.3	118					
07/26/2015	18:55:02	2.6	12.16	1.7	117	Start Mixing Lead Slurry				
07/26/2015	18:56:15	6.2	12.12	6.0	503	Wet Dry Samples Taken				
07/26/2015	18:59:55	6.2	12.13	28.6	516					
07/26/2015	19:09:57	6.2	11.95	75.3	487					
07/26/2015	19:14:58	6.1	12.08	101.4	503					
07/26/2015	19:25:00	6.1	12.13	162.8	503					
07/26/2015	19:30:01	6.0	12.04	193.2	485					
07/26/2015	19:35:02	6.1	12.07	223.8	476					
07/26/2015	19:40:03	6.1	12.09	254.3	504					
07/26/2015	19:41:28	2.1	11.98	262.3	121	Good Returns				
07/26/2015	19:42:20	2.2	12.45	264.2	116	End Lead Slurry				
07/26/2015	19:42:26	2.2	12.49	264.4	118	Reset Total, Vol = 269.32 bbl				
07/26/2015	19:43:40	1.6	13.43	266.8	97	Start Mixing Tail Slurry				
07/26/2015	19:43:43	1.6	13.43	266.9	95	Wet Dry Samples Taken				
07/26/2015	19:45:04	1.3	13.67	268.7	108					
07/26/2015	19:45:22	1.4	13.64	269.1	110	Good Returns				
07/26/2015	19:50:05	0.0	13.63	3.5	21					
07/26/2015	19:50:56	0.0	13.62	3.5	22	Shut Down				
07/26/2015	19:55:06	0.0	13.61	3.5	33					
07/26/2015	20:00:07	0.0	13.61	3.5	30					
07/26/2015	20:02:49	2.1	12.96	11.1	115	Fixed Packed Off Hose				
07/26/2015	20:05:08	2.3	12.10	15.9	108					
07/26/2015	20:10:09	1.7	13.51	25.9	109					
07/26/2015	20:14:54	2.0	13.64	46.9	133	Rig Ran Water Take Out				
07/26/2015	20:15:10	2.0	13.68	47.4	419					
07/26/2015	20:20:11	6.1	13.66	77.5	703					
07/26/2015	20:25:12	4.7	13.38	102.0	467					
07/26/2015	20:30:13	6.0	13.59	130.4	720					
07/26/2015	20:35:14	6.1	13.55	160.7	679					
07/26/2015	20:40:07	6.1	13.74	190.3	762	Good Returns				
07/26/2015	20:40:15	6.0	13.75	191.1	750					
07/26/2015	20:45:16	6.1	13.52	221.4	698					
07/26/2015	20:50:17	6.0	13.69	251.7	720					
07/26/2015	20:55:18	4.8	13.58	277.6	481					
07/26/2015	20:57:58	1.9	13.50	285.5	416	Good Returns				
07/26/2015	20:59:33	1.7	13.51	290.4	102	End Tail Slurry				
07/26/2015	21:00:19	0.0	13.52	0.0	21					
07/26/2015	21:00:50	0.0	13.53	0.0	21	Reset Total, Vol = 297.07 bbl				
07/26/2015	21:00:54	0.0	13.53	0.0	21	Drop Top Plug				
07/26/2015	21:00:56	0.0	13.53	0.0	22	Start Displacement				
07/26/2015	21:05:20	0.0	13.53	0.0	32					
07/26/2015	21:10:21	21.7	0.55	21.4	48					
07/26/2015	21:15:22	7.6	8.33	18.3	389					
07/26/2015	21:17:03	6.4	-0.04	31.1	802	Good Returns				
07/26/2015	21:20:23	6.1	8.31	51.6	849					
07/26/2015	21:25:24	6.1	8.31	82.2	1149					
07/26/2015	21:28:44	6.1	8.31	102.5	1408	Good Returns				
07/26/2015	21:30:25	6.1	8.31	112.7	1526					

Well			Field		Job Start	Customer		Job Number
Viper Pyro 16N2-10HZ			Wattenberg		Jul/26/2015	Anadarko		D5VO-00706
Date	Time 24-hr clock	Flow Rate B/M	Density LB/G	Volume BBL	CPF1_PRESS PSI	Message		
07/26/2015	21:40:27	5.8	8.31	171.5	2202			
07/26/2015	21:45:28	5.8	8.31	200.6	2260			
07/26/2015	21:50:29	5.8	8.31	229.6	2319			
07/26/2015	21:55:30	5.8	8.33	258.6	2373			
07/26/2015	21:55:43	5.8	8.33	259.9	2376	MUDPUSHII To Surface @ 230 Away		
07/26/2015	22:00:00	3.4	8.27	282.0	2009	Cement to Surface @ 288 bbls Away		
07/26/2015	22:00:31	4.5	6.46	283.7	2162			
07/26/2015	22:04:54	0.4	8.34	294.1	2443	Bump Top Plug		
07/26/2015	22:04:55	0.2	8.34	294.1	2404	End Displacement		
07/26/2015	22:04:56	0.1	8.34	294.1	2443	Check Float It Held 2 bbls Back		
07/26/2015	22:05:03	0.0	8.34	294.1	2471	Reset Total, Vol = 298.15 bbl		
07/26/2015	22:05:32	0.0	8.34	294.1	2417			
07/26/2015	22:10:33	1.9	8.33	295.6	1720			
07/26/2015	22:11:26	0.0	8.33	297.0	3002	Start Casing Test		
07/26/2015	22:15:34	0.0	8.34	297.0	3080			
07/26/2015	22:20:35	0.0	8.33	297.0	3164			
07/26/2015	22:25:36	0.0	8.33	297.0	3243			
07/26/2015	22:27:39	0.0	8.33	297.0	13	End Casing Test		
07/26/2015	22:30:37	0.0	-0.02	298.2	14			

Post Job Summary

Average Pump Rates, bbl/min					Volume of Fluid Injected, bbl					
Slurry 4.8	N2	Mud	Maximum Rate 7.6		Total Slurry 0.0	Mud 0.0	Spacer 0.0	N2		
Treating Pressure Summary, psi					Breakdown Fluid					
Maximum 5592	Final 8	Average 733	Bump Plug to 3000	Breakdown	Type	Volume bbl	Density lb/gal			
Avg. N2 Percent %		Designed Slurry Volume 549.0 bbl		Displacement 0.0 bbl	Mix Water Temp 65 degF	Cement Circulated to Surface? <input checked="" type="checkbox"/>	Volume 10.0 bbl			
						Washed Thru Perfs <input type="checkbox"/>	To ft			
Customer or Authorized Representative Joe Wallen			Schlumberger Supervisor Wayne Silvester/Luis Evans			Circulation Lost <input type="checkbox"/>	Job Completed <input checked="" type="checkbox"/>			
						-	-			