

\\ANADARKO\2017\2017_119_ENGLISH_FARMS_TIN_R65W_SEC_8\PLATS\8-10HZ\ENGLISH FARMS 8-10HZ PLATS.dwg, 11/20/2017 8:03:42 PM, ethan

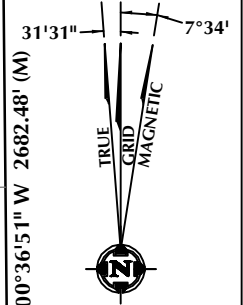
T1N, R65W

N. 1/4 COR.
SEC. 20, T1N, R65W
FOUND 2" ALUM. CAP
L.S. NO. 25937

MATCH LINE
SEE SHEET 1

NE. COR.
SEC. 20, T1N, R65W
FOUND 2 1/2" ALUM. CAP
L.S. NO. 19585

SURFACE LOCATION: NAD 83
GROUND ELEVATION= 4945.1'
LATITUDE= 40.059649°
LONGITUDE= -104.686831°
LATITUDE= 40°03'34.735"
LONGITUDE= -104°41'12.592"
HEEL LOCATION: NAD 83
LATITUDE= 40.058618°
LONGITUDE= -104.689502°
LATITUDE= 40°03'31.025"
LONGITUDE= -104°41'22.206"
BOTTOM HOLE LOCATION: NAD 83
LATITUDE= 40.023643°
LONGITUDE= -104.689890°
LATITUDE= 40°01'25.115"
LONGITUDE= -104°41'23.604"



20

CENTER 1/4 COR.
SEC. 20, T1N, R65W
FOUND 2" ALUM. CAP
L.S. NO. 25937

CS. 1/16 COR.
SEC. 20, T1N, R65W
FOUND 2" ALUM. CAP
P.L.S. NO. 23519

S. 1/4 COR.
SEC. 20, T1N, R65W
FOUND 2 1/2" ALUM. CAP
L.S. NO. 30462

E. 1/4 COR.
SEC. 20, T1N, R65W
FOUND 2" ALUM. CAP
L.S. NO. 25937

N 00°36'12" W 2676.57' (M)

MATCH LINE
SEE SHEET 3

SE. COR.
SEC. 20, T1N, R65W
FOUND 2" ALUM. CAP
ILLEGIBLE

NW. COR.
SEC. 20, T1N, R65W
FOUND 2" ALUM. CAP
L.S. NO. 25937

N. 1/16 COR.
SEC. 19 & SEC. 20
T1N, R65W
FOUND 2 1/2" ALUM. CAP
ILLEGIBLE

W. 1/4 COR.
SEC. 20, T1N, R65W
FOUND 2" ALUM. CAP
L.S. NO. 25937

SW. COR.
SEC. 20, T1N, R65W
FOUND 2" ALUM. CAP
ILLEGIBLE

CERTIFICATE OF SURVEYOR:

THIS IS TO CERTIFY THAT THE ABOVE PLAT WAS PREPARED FROM FIELD NOTES OF ACTUAL SURVEYS MADE BY ME OR UNDER MY SUPERVISION AND THAT THE SAME ARE TRUE AND CORRECT TO THE BEST OF MY KNOWLEDGE AND BELIEF. THIS CERTIFICATE DOES NOT REPRESENT A LAND SURVEY PLAT OR IMPROVEMENT SURVEY PLAT AS DEFINED BY C.R.S. 38-5-102 AND CANNOT BE RELIED UPON TO DETERMINE OWNERSHIP.

Randall K. French
38512
PROFESSIONAL LAND SURVEYOR
11/21/17
COLORADO REGISTRATION NUMBER 38512

NOTICE:
ACCORDING TO COLORADO STATE LAW YOU MUST TAKE LEGAL ACTION BASED UPON ANY DEFECT IN THIS SURVEY WITHIN THREE YEARS AFTER YOU FIRST DISCOVER SUCH DEFECT. IN NO EVENT MAY ANY ACTION BASED UPON ANY DEFECT IN THIS SURVEY BE COMMENCED MORE THAN TEN YEARS FROM THE DATE ON THE CERTIFICATION SHOWN HEREON.

NOTE:
MAGNETIC NORTH IS CURRENT AS OF 10/27/2017.
MAGNETIC NORTH CHANGES WEST 0°06' PER YEAR.



SCALE: 1" = 1000'

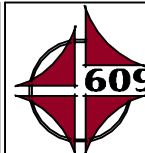
NOTES:

- ▲ INDICATES SECTION CORNER.
- INDICATES CALCULATED CORNER.
- ELEVATION BASED ON NAVD88 (GEOID 12B).
- BASIS OF BEARING DERIVED FROM COLORADO COORDINATE SYSTEM OF 1983 NORTH ZONE.
- ALL MEASURED DISTANCES ARE GRID.
- COMBINED SCALE FACTOR: .99972920 CALCULATED FROM THE S. 1/4 CORNER OF SECTION 8, T1N, R65W.
- OPERATOR: MARC RITT / PDOP = 1.6.
- SEE ADDENDUM TO WELL LOCATION CERTIFICATE FOR EXISTING IMPROVEMENTS WITHIN 500' OF THE WELL PAD.
- WELL FOOTAGES ARE MEASURED AT RIGHT ANGLES TO THE SECTION LINES.
- THE BOTTOM OF HOLE BEARS S00°02'05"E, 12741' FROM THE HEEL LOCATION.

WELL PAD - ENGLISH FARMS 8-10HZ

ENGLISH FARMS 8-9HZ
WELL LOCATION CERTIFICATE
326' FSL & 2335' FEL SWSE (SURFACE)
LOCATED IN SECTION 8
50' FNL & 2111' FWL NENW (HEEL)
LOCATED IN SECTION 17
2183' FNL & 2084' FWL SENW (BOTTOM)
LOCATED IN SECTION 29
T1N, R65W, 6TH P.M.
WELD COUNTY, COLORADO

Kerr-McGee Oil &
Gas Onshore L.P.
1099 18th Street
Denver, Colorado 80202



CONSULTING, LLC

SHERIDAN OFFICE
1095 Saberton Avenue
Sheridan, Wyoming 82801
Phone 307-674-0609

LOVELAND OFFICE
1635 Foxtrail Drive, Suite 204
Loveland, Colorado 80538
Phone 970-776-4331

DRAFTED BY:	LMO	CHECKED BY:	RKF	SHEET NO:
DATE DRAFTED:	11/21/17	DATE SURVEYED:	7/24/17	2
REVISED:		FILE NAME:	17-119	2 OF 3

T1N, R65WN. 1/4 COR.
SEC. 29, T1N, R65W
FOUND 2 1/2" ALUM. CAP
L.S. NO. 30462MATCH LINE
SEE SHEET 2NE. COR.
SEC. 29, T1N, R65W
FOUND 2" ALUM. CAP
ILLEGIBLENW. COR.
SEC. 29, T1N, R65W
FOUND 2" ALUM. CAP
ILLEGIBLE

S 89°39'07" W 2629.84' (M)

S 89°39'36" W 2628.63' (M)

N 00°13'34" E 2653.16' (M)

2183'

N 00°01'17" W 2651.70' (C)

SURFACE LOCATION: NAD 83
GROUND ELEVATION= 4945.1'
LATITUDE= 40.059649°
LONGITUDE= -104.686831°
LATITUDE= 40°03'34.735"
LONGITUDE= -104°41'12.592"
HEEL LOCATION: NAD 83
LATITUDE= 40.058618°
LONGITUDE= -104.689502°
LATITUDE= 40°03'31.025"
LONGITUDE= -104°41'22.206"
BOTTOM HOLE LOCATION: NAD 83
LATITUDE= 40.023643°
LONGITUDE= -104.689890°
LATITUDE= 40°01'25.115"
LONGITUDE= -104°41'23.604"

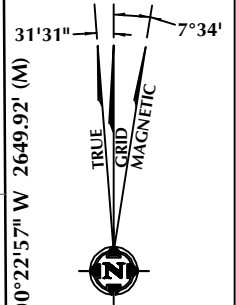
BOTTOM OF HOLE:
2183' FNL & 2084' FWL

2084'

765'

555'

469'

S 89°37'20" W
2641.31' (C)S 89°37'20" W
2645.33' (C)**29**

N 00°22'57" W 2649.92' (M)

N 00°22'53" W 2649.93' (M)

SE. COR.
SEC. 29, T1N, R65W
FOUND 3 1/4" ALUM. CAP
L.S. NO. 23520W. 1/4 COR.
SEC. 29, T1N, R65W
FOUND 2 1/2" ALUM. CAP
P.L.S. NO. 36060E. 1/4 COR.
SEC. 29, T1N, R65W
FOUND 2" ALUM. CAP
L.S. NO. 25937SW. COR.
SEC. 29, T1N, R65W
FOUND 2 1/2" ALUM. CAP
L.S. NO. 23027S 89°41'23" W
1326.46' (M)S 89°41'22" W
1326.52' (M)S 89°29'10" W
1331.04' (M)S 89°29'13" W
1330.99' (M)W. 1/16 COR.
SEC. 29 & SEC. 32, T1N, R65W
FOUND 2 1/2" ALUM. CAP
L.S. NO. 27269S. 1/4 COR.
SEC. 29, T1N, R65W
FOUND 3 1/4" ALUM. CAP
L.S. NO. 22098E. 1/16 COR.
SECS. 29 & 32, T1N, R65W
FOUND 2 1/2" ALUM. CAP
L.S. NO. 23520**CERTIFICATE OF SURVEYOR:**

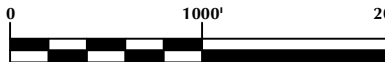
THIS IS TO CERTIFY THAT THE ABOVE PLAT WAS PREPARED FROM FIELD NOTES OF ACTUAL SURVEYS MADE BY ME OR UNDER MY SUPERVISION AND THAT THE SAME ARE TRUE AND CORRECT TO THE BEST OF MY KNOWLEDGE AND BELIEF. THIS CERTIFICATE DOES NOT REPRESENT A LAND SURVEY PLAT OR IMPROVEMENT SURVEY PLAT AS DEFINED BY C.R.S. 38-5-102 AND CANNOT BE RELIED UPON TO DETERMINE OWNERSHIP.

Randall K. French
38512
PROFESSIONAL LAND SURVEYOR
11/21/17
COLORADO REGISTRATION NUMBER 38512

NOTICE:
ACCORDING TO COLORADO STATE LAW YOU MUST TAKE LEGAL ACTION BASED UPON ANY DEFECT IN THIS SURVEY WITHIN THREE YEARS AFTER YOU FIRST DISCOVER SUCH DEFECT. IN NO EVENT MAY ANY ACTION BASED UPON ANY DEFECT IN THIS SURVEY BE COMMENCED MORE THAN TEN YEARS FROM THE DATE ON THE CERTIFICATION SHOWN HEREON.

NOTE:

MAGNETIC NORTH IS CURRENT AS OF 10/27/2017.
MAGNETIC NORTH CHANGES WEST 0°06' PER YEAR.



SCALE: 1" = 1000'

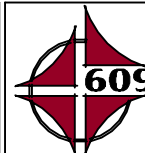
NOTES:

- ▲ INDICATES SECTION CORNER.
- INDICATES CALCULATED CORNER.
- ELEVATION BASED ON NAVD88 (GEOID 12B).
- BASIS OF BEARING DERIVED FROM COLORADO COORDINATE SYSTEM OF 1983 NORTH ZONE.
- ALL MEASURED DISTANCES ARE GRID.
- COMBINED SCALE FACTOR: .99972920 CALCULATED FROM THE S. 1/4 CORNER OF SECTION 8, T1N, R65W.
- OPERATOR: MARC RITT / PDOP = 1.6.
- SEE ADDENDUM TO WELL LOCATION CERTIFICATE FOR EXISTING IMPROVEMENTS WITHIN 500' OF THE WELL PAD.
- WELL FOOTAGES ARE MEASURED AT RIGHT ANGLES TO THE SECTION LINES.
- THE BOTTOM OF HOLE BEARS S00°02'05"E, 12741' FROM THE HEEL LOCATION.

WELL PAD - ENGLISH FARMS 8-10H2

ENGLISH FARMS 8-9H2
WELL LOCATION CERTIFICATE
326' FSL & 2335' FEL SWSE (SURFACE)
LOCATED IN SECTION 8
50' FNL & 2111' FWL NENW (HEEL)
LOCATED IN SECTION 17
2183' FNL & 2084' FWL SENW (BOTTOM)
LOCATED IN SECTION 29
T1N, R65W, 6TH P.M.
WELD COUNTY, COLORADO

**Kerr-McGee Oil &
Gas Onshore L.P.**
1099 18th Street
Denver, Colorado 80202

**CONSULTING, LLC**

SHERIDAN OFFICE
1095 Saberton Avenue
Sheridan, Wyoming 82801
Phone 307-674-0609

LOVELAND OFFICE
1635 Foxtrail Drive, Suite 204
Loveland, Colorado 80538
Phone 970-776-4331

DRAFTED BY:	LMO	CHECKED BY:	RKF	SHEET NO:
DATE DRAFTED:	11/21/17	DATE SURVEYED:	7/24/17	3
REVISED:		FILE NAME:	17-119	3 OF 3