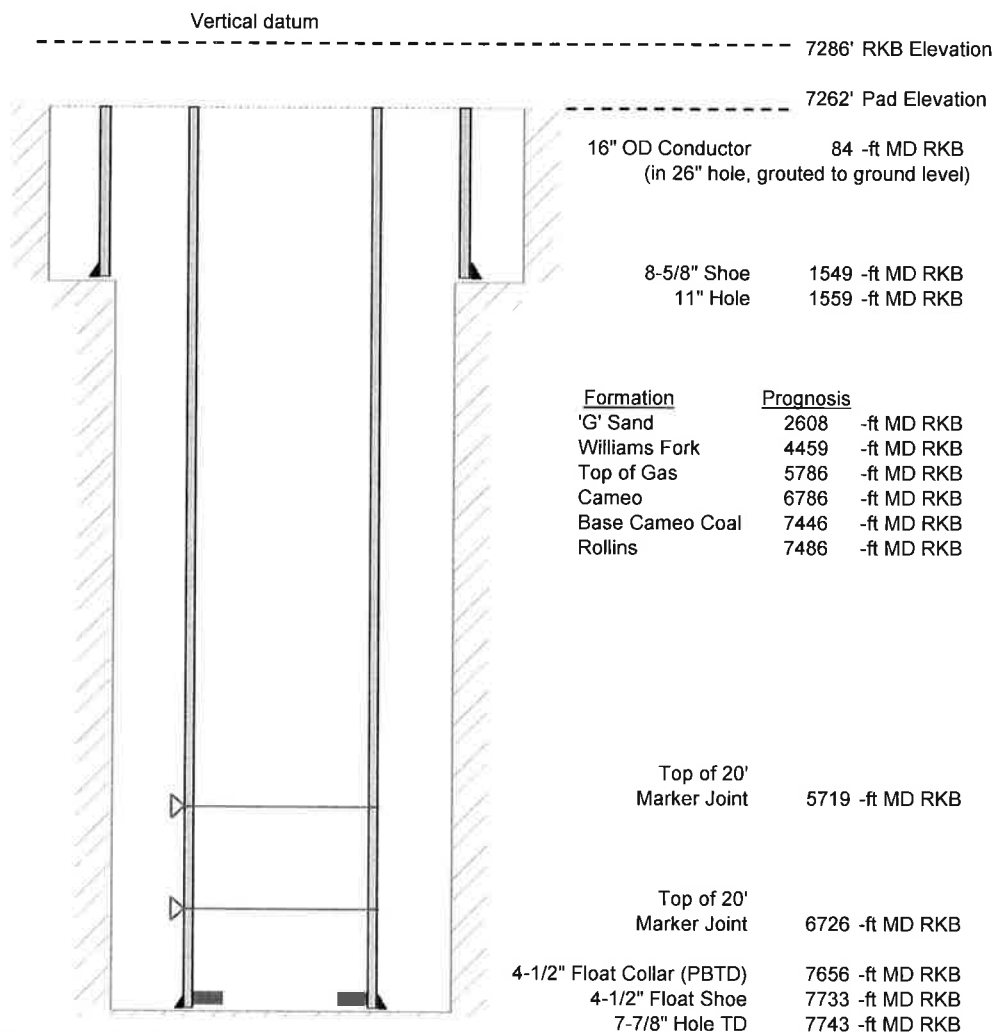


Laramie Energy, LLC
 Bruton 19-06W
 Slot A-7
 H&P 290 (24-ft KB)

API #: 077-10426-00
 SE/4 NW/4 S19/T9S/R93W/6th PM
 Mesa County, CO
 Date of diagram: 10/3/2017



Cementing details

8-5/8" 24# J55 STC Surface Csg	Lead	Tail
Density (ppg)	12.0	12.5
Volume (sx)	168	120
Yield (cf/sx)	2.52	2.22
Top (ft RKB)	24	1024
Bottom (ft RKB)	1024	1549
Returns (full or partial)	full	full

4-1/2" 11.6# L-80 LTC Prod Csg	Lead	Tail
Density (ppg)	12.7	13.5
Volume (sx)	783	402
Yield (cf/sx)	1.97	1.90
Est Top (ft RKB)	1024	5586
Est Bottom (ft RKB)	5586	7733
Returns (full or partial)	full	full

Displacement
8.3 ppg
119 bbls

Other Remarks: Surface-15 bbls cement to surface Production-40
 bbls spacer to surface