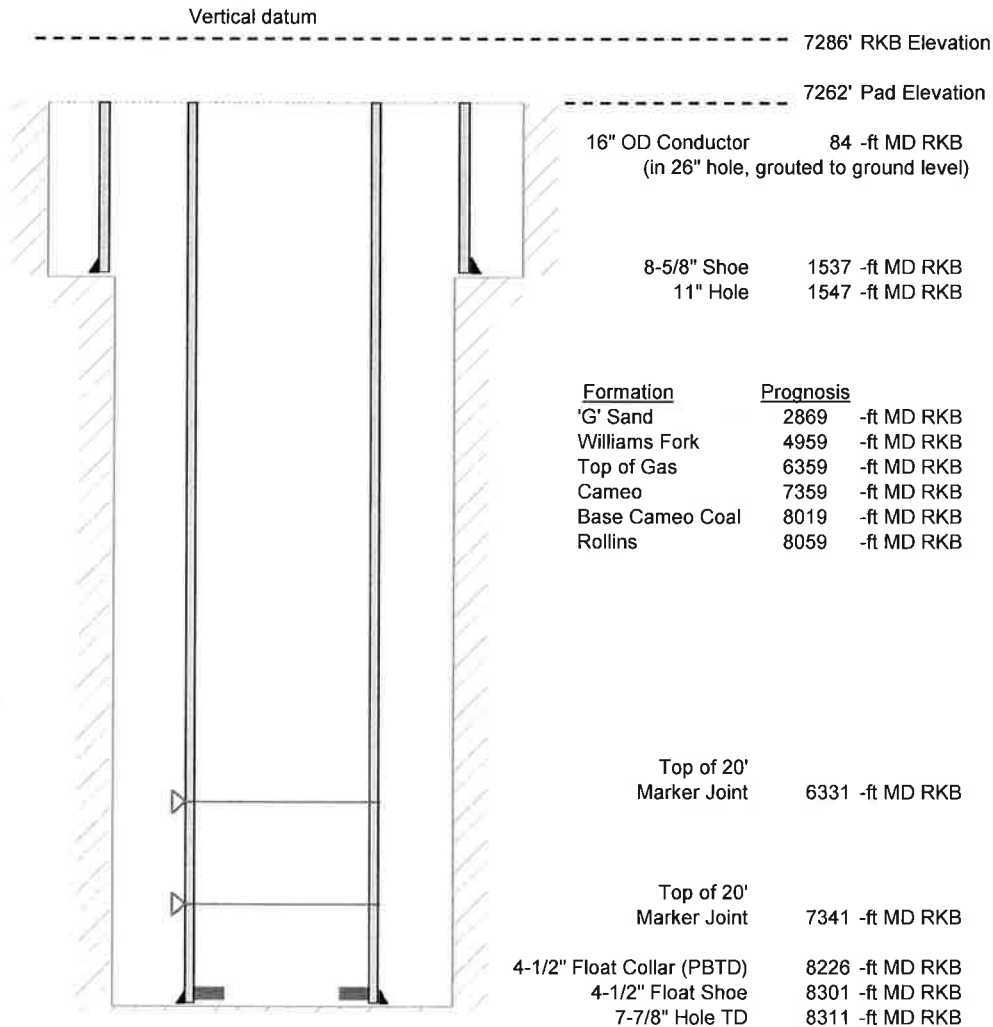


Laramie Energy, LLC  
 Bruton 19-05E  
 Slot B-9  
 H&P 290 (24-ft KB)

API # : 077-10438-00  
 SE/4 NW/4 S19/T9S/R93W/6th PM  
 Mesa County, CO  
 Date of diagram : 9/17/2017



#### Cementing details

8-5/8" 24# J55 STC Surface Csg	Lead	Tail
Density (ppg)	Lead	Tail
Volume (sx)	12.0	12.5
Yield (cf/sx)	171	124
Top (ft RKB)	2.52	2.22
Bottom (ft RKB)	24	1024
Returns (full or partial)	1024	1537
	full	full
4-1/2" 11.6# L-80 LTC Prod Csg	Lead	Tail
Density (ppg)	12.7	13.5
Volume (sx)	885	402
Yield (cf/sx)	1.97	1.90
Est Top (ft RKB)	1024	6159
Est Bottom (ft RKB)	6159	8301
Returns (full or partial)	full	Full

Displacement
8.3 ppg
128 bbls

Other Remarks : Surface-16 bbls cement to surface Production- 17  
 bbls spacer to surface