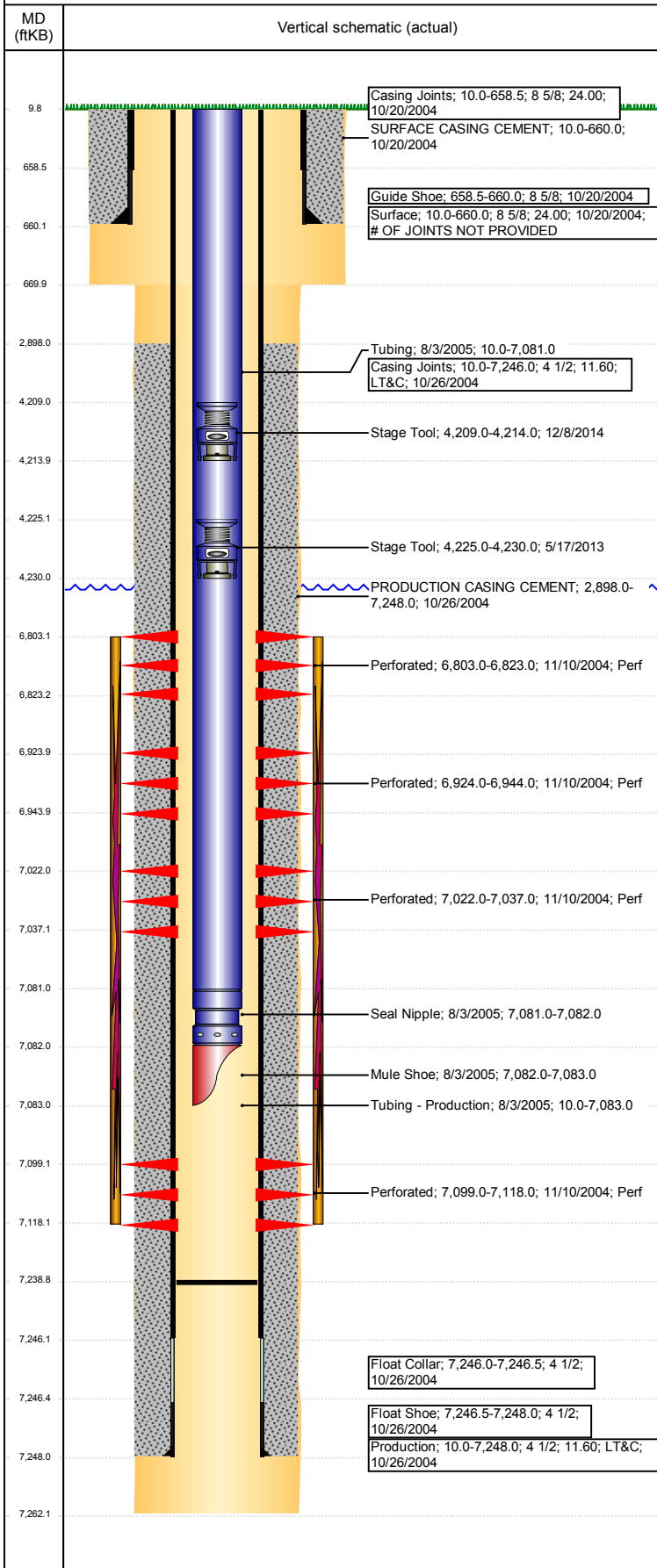


Well Name: THAYER 19-31

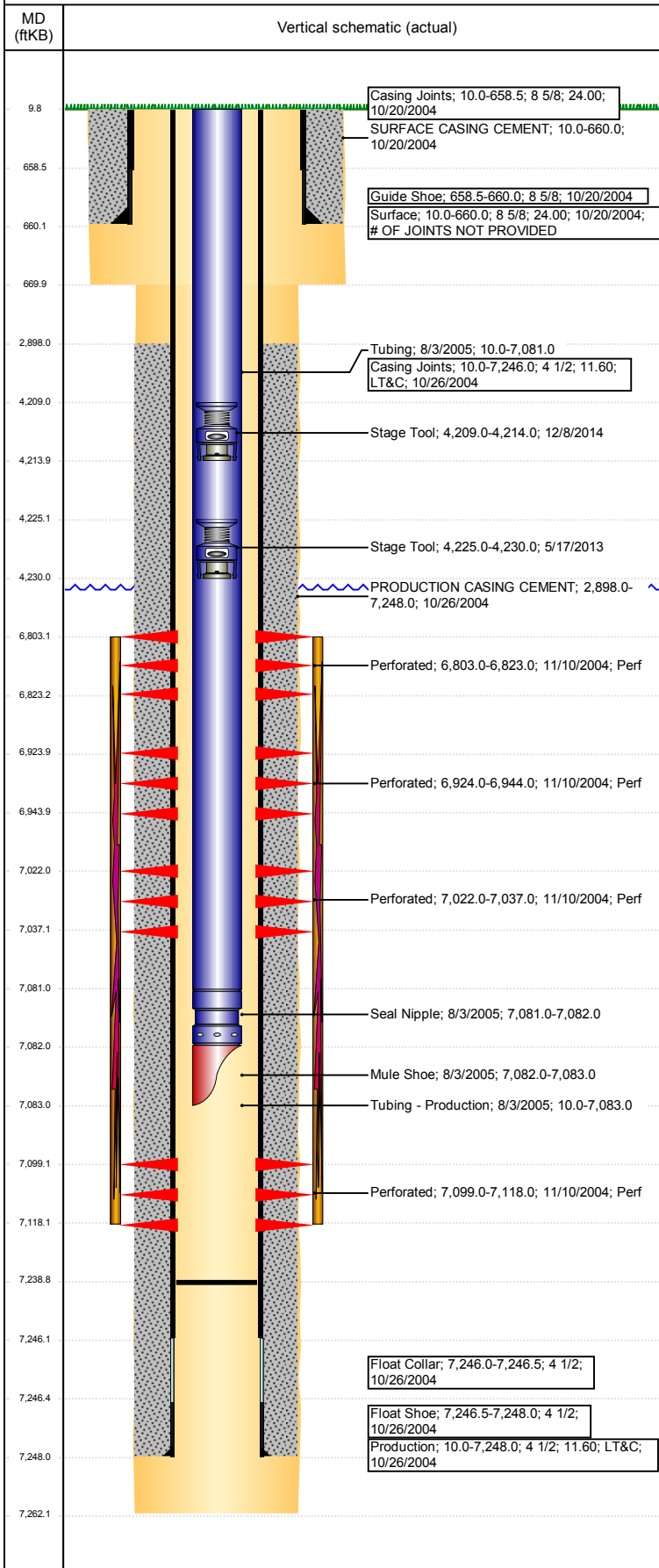
VERTICAL - ORIGINAL HOLE, 1/9/2018 3:33:22 PM



Well Header						
API 05-123-22385	Business Unit DJ BASIN		District 15		Well Config VERTICAL	
Original KB Elevation (ft) 4,762	KB - GL / MSL (ftKB) 10.00		Spud Date 10/19/2004		P & A Date	
Comment						
Directions To Well						
Congressional Location						
Quarter 3	Quarter 4 SW	Section 19	Township 6	Twntshp N/S Dir N	Range 66	Range E/W Dir W
Bottom Hole Location						
North-South Distance (ft)		From N or S Line		East-West Distance (ft)		From E or W Line
Plug Back Total Depths						
Date	Depth (ftKB)	Method		Com		
10/26/2004	7,234.0	CASING TALLY		FLOAT COLLAR ON CASING TALLY		
11/3/2004	7,225.0	CASED HOLE LOG		DEPTH LOGGER ON CBL		
8/3/2005	7,239.0	TAG		CLEANOUT TO LAND TUBING		
Wellbore Sections						
Section Des		Size (in)		Act Top, MD (ftKB)		Act Btm, MD (ftKB)
SURFACE		12 1/4		10		670
PRODUCTION		7 7/8		670		7,262
Zone Statuses						
Zone Name	Status Date	Status	Fluid Type	Job	Prod Method	
CODELL	12/13/2004	PR	Water	DRILLING/CO...	Flowing	
CODELL	12/13/2010	PR		DRILLING/CO...	Flowing	
NIOBRARA-C...	12/13/2004	PR	Water			Flowing
NIOBRARA-C...	12/13/2010	PR		Water		
NIOBRARA	12/13/2010	PR				
NIOBRARA	2/20/2015	PR				
Casing Strings						
Surface, 660.0ftKB						
Casing Description Surface	Run Date 10/20/2004	OD (in) 8 5/8	Wt/Len (l... 24.00	Grade	Top, MD (ft... 10.0	MD (ftKB) 660.0
Production, 7,248.0ftKB						
Casing Description Production	Run Date 10/26/2004	OD (in) 4 1/2	Wt/Len (l... 11.60	Grade LT&C	Top, MD (ft... 10.0	MD (ftKB) 7,248.0
Cement						
Description SURFACE CASING CEMENT				Top Depth (ftKB) 10.0	Bottom Depth (ftKB) 660.0	
Description PRODUCTION CASING CEMENT				Top Depth (ftKB) 2,898.0	Bottom Depth (ftKB) 7,248.0	
Tubing Strings						
Tubing Description Tubing - Production	Run Date 8/3/2005	String... 2 3/8	ID (in)	Wt (lb/ft)	Grade	Len (ft) 7,073.00
Tubing Components						
Item Des	OD (in)	Wt (lb/ft)	Grade	Jts	Len (ft)	Btm (ftKB) Btm (TVD) (ftKB)
Tubing	2 3/8			214	7,071.00	7,081.0
Seal Nipple	2 3/8			1	1.00	7,082.0
Mule Shoe	2 3/8			1	1.00	7,083.0
Other In Hole						
Run Date	Des			OD (in)	Top (ftKB)	Btm (ftKB)
5/17/2013	Stage Tool			2	4,225.0	4,230.0
12/8/2014	Stage Tool			2	4,209.0	4,214.0
Logs						
Date	Type				Top, MD (ftKB)	Btm, MD (ftKB)
10/25/2004	COMPENSATED DENSITY				3,000.0	7,242.0
10/25/2004	INDUCTION				6,600.0	7,262.0
11/3/2004	CEMENT BOND				2,800.0	7,223.0
11/14/2017	GYRO				12.0	7,000.0
Perforation Data						
Linked Zone	Bnch/St g	Sum of Entered Shot Total	Top (ftKB)	Btm (ftKB)	Date	
NIOBRARA, ORIGINAL HOLE	A	80	6,803.00	6,823.00	11/10/2004	

Well Name: THAYER 19-31

VERTICAL - ORIGINAL HOLE, 1/9/2018 3:33:23 PM



Perforation Data

Linked Zone	Bnch/St g	Sum of Entered Shot Total	Top (ftKB)	Btm (ftKB)	Date
NIOBRARA, ORIGINAL HOLE	B	80	6,924.00	6,944.00	11/10/2004
NIOBRARA, ORIGINAL HOLE	C	60	7,022.00	7,037.00	11/10/2004
CODELL, ORIGINAL HOLE		76	7,099.00	7,118.00	11/10/2004
Total (Sum)		296			

Stimulation Intervals

Start Date 11/12/2004	Primary Job Type DRILLING/COMPLETION - ORIGINAL	
Technical Result	Tech Result Details	Tech Result Note

Comment
LIMITED ENTRY FRAC