



CRESTONE PEAK
RESOURCES

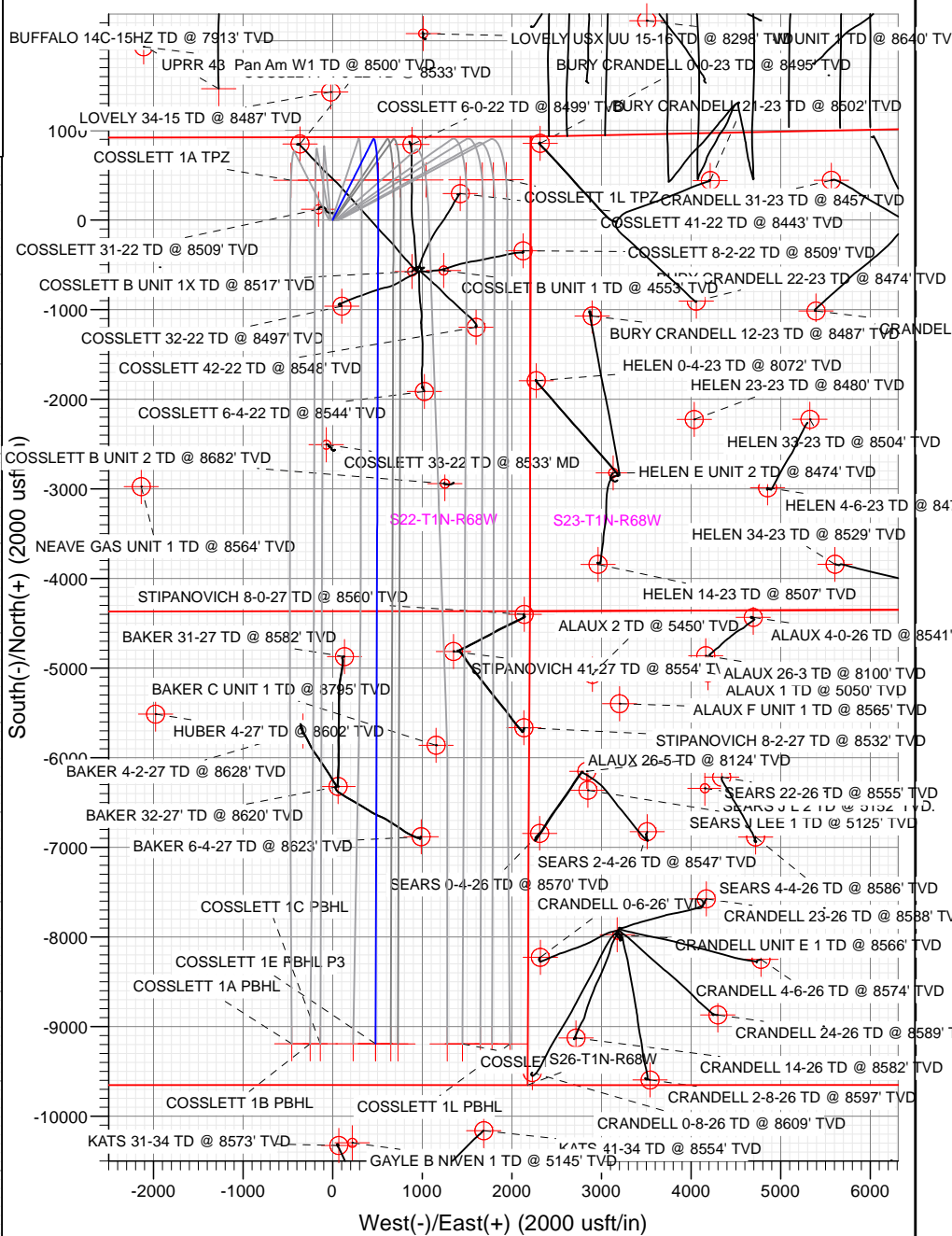
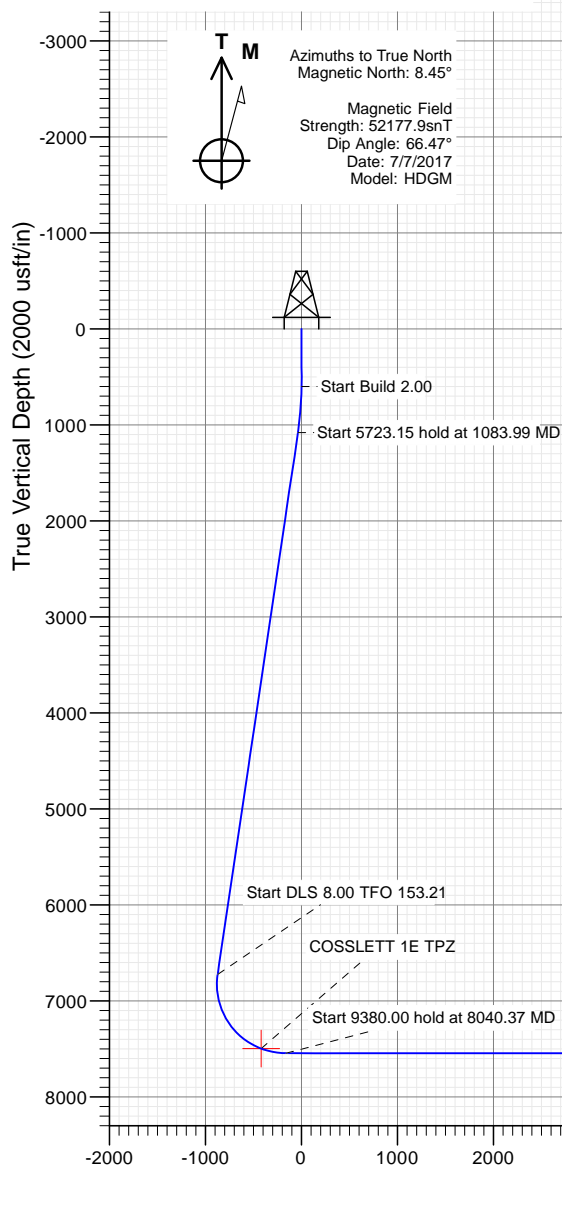
SECTION DETAILS

Sec	MD	Inc	Azi	TVD	+N/-S	+E/-W	Dleg	TFace	VSecl	Target
1	0.00	0.00	0.00	0.00	0.00	0.00	0.00	0.00	0.00	
2	600.00	0.00	0.00	600.00	0.00	0.00	0.00	0.00	0.00	
3	1083.99	9.68	26.65	1081.70	36.45	18.30	2.00	26.65	-35.45	
4	6807.15	9.68	26.65	6723.37	896.52	449.95	0.00	0.00	-871.89	
5	8040.37	90.00	180.19	7545.00	188.28	510.05	8.00	153.21	-161.48	
6	17420.37	90.00	180.19	7545.00	-9191.67	478.95	0.00	0.00	9204.14	COSSLETT 1E PBHL P3

PLAN #4
COSSLETT 1E-22H-B168
17000' LR
23 KB @ 5197.00usft
Ground Level @ 5174.00
North American Datum 1983
Well COSSLETT 1E-22H-B168, True North

Type	Target	No Target (Freehand)	Azimuth	Origin Type	Slot	N/S	E/W	From TVD
Name	TVD	+N/-S	+E/-W	Latitude	Longitude			
COSSLETT 1E TPZ	7497.04	446.32	510.96	40.042616	-104.986115			
COSSLETT 1E PBHL P3	7545.00	-9191.67	478.95	40.016158	-104.986230			
COSSLETT 1E PBHL	7550.00	-9191.67	478.95	40.016158	-104.986230			

Project: DJ BASIN
Site: S22-T1N-R68W
Well: COSSLETT 1E-22H-B168
Wellbore: OH
Design: PLAN #4



WELL DETAILS: COSSLETT 1E-22H-B168

+N/-S	+E/-W	Northing	Easting	Latitude	Longitude
0.00	0.00	1258338.39	3143367.58	40.041391	-104.987940

CATHEDRAL



Cathedral Energy Services

Planning Report

Database:	USA EDM 5000 Multi Users DB	Local Co-ordinate Reference:	Well COSSLETT 1E-22H-B168
Company:	Crestone Peak Resources	TVD Reference:	23' KB @ 5197.00usft
Project:	DJ BASIN	MD Reference:	23' KB @ 5197.00usft
Site:	S22-T1N-R68W	North Reference:	True
Well:	COSSLETT 1E-22H-B168	Survey Calculation Method:	Minimum Curvature
Wellbore:	OH		
Design:	PLAN #4		

Project	DJ BASIN		
Map System:	US State Plane 1983	System Datum:	Mean Sea Level
Geo Datum:	North American Datum 1983		
Map Zone:	Colorado Northern Zone		

Site		S22-T1N-R68W			
Site Position:		Northing:	1,258,338.24 usft	Latitude:	40.041391
From:	Lat/Long	Easting:	3,143,327.55 usft	Longitude:	-104.988083
Position Uncertainty:	0.00 usft	Slot Radius:	13-3/16 "	Grid Convergence:	0.33 °

Well	COSSLETT 1E-22H-B168					
Well Position	+N/-S	0.00 usft	Northing:	1,258,338.39 usft	Latitude:	40.041391
	+E/-W	0.00 usft	Easting:	3,143,367.58 usft	Longitude:	-104.987940
Position Uncertainty		0.00 usft	Wellhead Elevation:	usft	Ground Level:	5,174.00 usft

Wellbore		OH			
Magnetics	Model Name	Sample Date	Declination (°)	Dip Angle (°)	Field Strength (nT)
	HDGM	7/7/2017	8.45	66.47	52,177.90000000

Design	PLAN #4			
Audit Notes:				
Version:	Phase:	PLAN	Tie On Depth:	0.00
Vertical Section:	Depth From (TVD) (usft)	+N/-S (usft)	+E/-W (usft)	Direction (°)
	0.00	0.00	0.00	177.02

Plan Sections										
Measured Depth (usft)	Inclination (°)	Azimuth (°)	Vertical Depth (usft)	+N/-S (usft)	+E/-W (usft)	Dogleg Rate (°/100usft)	Build Rate (°/100usft)	Turn Rate (°/100usft)	TFO (°)	Target
0.00	0.00	0.00	0.00	0.00	0.00	0.00	0.00	0.00	0.00	
600.00	0.00	0.00	600.00	0.00	0.00	0.00	0.00	0.00	0.00	
1,083.99	9.68	26.65	1,081.70	36.45	18.30	2.00	2.00	0.00	26.65	
6,807.15	9.68	26.65	6,723.37	896.52	449.95	0.00	0.00	0.00	0.00	
8,040.37	90.00	180.19	7,545.00	188.28	510.05	8.00	6.51	12.45	153.21	
17,420.37	90.00	180.19	7,545.00	-9,191.67	478.95	0.00	0.00	0.00	0.00	COSSLETT 1E PBHL

Cathedral Energy Services

Planning Report

Database:	USA EDM 5000 Multi Users DB	Local Co-ordinate Reference:	Well COSSLETT 1E-22H-B168
Company:	Crestone Peak Resources	TVD Reference:	23' KB @ 5197.00usft
Project:	DJ BASIN	MD Reference:	23' KB @ 5197.00usft
Site:	S22-T1N-R68W	North Reference:	True
Well:	COSSLETT 1E-22H-B168	Survey Calculation Method:	Minimum Curvature
Wellbore:	OH		
Design:	PLAN #4		

Planned Survey

Measured Depth (usft)	Inclination (°)	Azimuth (°)	Vertical Depth (usft)	+N/-S (usft)	+E/-W (usft)	Vertical Section (usft)	Dogleg Rate (°/100usft)	Build Rate (°/100u)	Comments / Formations
0.00	0.00	0.00	0.00	0.00	0.00	0.00	0.00	0.00	
100.00	0.00	0.00	100.00	0.00	0.00	0.00	0.00	0.00	
200.00	0.00	0.00	200.00	0.00	0.00	0.00	0.00	0.00	
300.00	0.00	0.00	300.00	0.00	0.00	0.00	0.00	0.00	
400.00	0.00	0.00	400.00	0.00	0.00	0.00	0.00	0.00	
500.00	0.00	0.00	500.00	0.00	0.00	0.00	0.00	0.00	
600.00	0.00	0.00	600.00	0.00	0.00	0.00	0.00	0.00	
700.00	2.00	26.65	699.98	1.56	0.78	-1.52	2.00	2.00	
800.00	4.00	26.65	799.84	6.24	3.13	-6.07	2.00	2.00	
900.00	6.00	26.65	899.45	14.03	7.04	-13.64	2.00	2.00	
1,000.00	8.00	26.65	998.70	24.92	12.51	-24.23	2.00	2.00	
1,083.99	9.68	26.65	1,081.70	36.45	18.30	-35.45	2.00	2.00	
1,100.00	9.68	26.65	1,097.47	38.86	19.50	-37.79	0.00	0.00	
1,200.00	9.68	26.65	1,196.05	53.89	27.05	-52.41	0.00	0.00	
1,300.00	9.68	26.65	1,294.63	68.91	34.59	-67.02	0.00	0.00	
1,400.00	9.68	26.65	1,393.20	83.94	42.13	-81.64	0.00	0.00	
1,500.00	9.68	26.65	1,491.78	98.97	49.67	-96.25	0.00	0.00	
1,600.00	9.68	26.65	1,590.35	114.00	57.21	-110.87	0.00	0.00	
1,700.00	9.68	26.65	1,688.93	129.03	64.76	-125.48	0.00	0.00	
1,800.00	9.68	26.65	1,787.51	144.05	72.30	-140.10	0.00	0.00	
1,900.00	9.68	26.65	1,886.08	159.08	79.84	-154.71	0.00	0.00	
2,000.00	9.68	26.65	1,984.66	174.11	87.38	-169.33	0.00	0.00	
2,100.00	9.68	26.65	2,083.24	189.14	94.93	-183.94	0.00	0.00	
2,200.00	9.68	26.65	2,181.81	204.17	102.47	-198.56	0.00	0.00	
2,300.00	9.68	26.65	2,280.39	219.19	110.01	-213.17	0.00	0.00	
2,400.00	9.68	26.65	2,378.96	234.22	117.55	-227.79	0.00	0.00	
2,500.00	9.68	26.65	2,477.54	249.25	125.10	-242.40	0.00	0.00	
2,600.00	9.68	26.65	2,576.12	264.28	132.64	-257.02	0.00	0.00	
2,700.00	9.68	26.65	2,674.69	279.30	140.18	-271.63	0.00	0.00	
2,800.00	9.68	26.65	2,773.27	294.33	147.72	-286.25	0.00	0.00	
2,900.00	9.68	26.65	2,871.85	309.36	155.26	-300.86	0.00	0.00	
3,000.00	9.68	26.65	2,970.42	324.39	162.81	-315.48	0.00	0.00	
3,100.00	9.68	26.65	3,069.00	339.42	170.35	-330.09	0.00	0.00	
3,200.00	9.68	26.65	3,167.57	354.44	177.89	-344.71	0.00	0.00	
3,300.00	9.68	26.65	3,266.15	369.47	185.43	-359.32	0.00	0.00	
3,400.00	9.68	26.65	3,364.73	384.50	192.98	-373.94	0.00	0.00	
3,500.00	9.68	26.65	3,463.30	399.53	200.52	-388.55	0.00	0.00	
3,600.00	9.68	26.65	3,561.88	414.55	208.06	-403.17	0.00	0.00	
3,700.00	9.68	26.65	3,660.46	429.58	215.60	-417.78	0.00	0.00	
3,800.00	9.68	26.65	3,759.03	444.61	223.15	-432.40	0.00	0.00	
3,900.00	9.68	26.65	3,857.61	459.64	230.69	-447.01	0.00	0.00	
4,000.00	9.68	26.65	3,956.18	474.67	238.23	-461.63	0.00	0.00	
4,100.00	9.68	26.65	4,054.76	489.69	245.77	-476.24	0.00	0.00	
4,200.00	9.68	26.65	4,153.34	504.72	253.31	-490.86	0.00	0.00	
4,300.00	9.68	26.65	4,251.91	519.75	260.86	-505.47	0.00	0.00	
4,400.00	9.68	26.65	4,350.49	534.78	268.40	-520.09	0.00	0.00	
4,500.00	9.68	26.65	4,449.07	549.81	275.94	-534.70	0.00	0.00	
4,600.00	9.68	26.65	4,547.64	564.83	283.48	-549.32	0.00	0.00	
4,700.00	9.68	26.65	4,646.22	579.86	291.03	-563.93	0.00	0.00	
4,800.00	9.68	26.65	4,744.79	594.89	298.57	-578.55	0.00	0.00	
4,900.00	9.68	26.65	4,843.37	609.92	306.11	-593.16	0.00	0.00	
5,000.00	9.68	26.65	4,941.95	624.94	313.65	-607.78	0.00	0.00	

Cathedral Energy Services

Planning Report

Database:	USA EDM 5000 Multi Users DB	Local Co-ordinate Reference:	Well COSSLETT 1E-22H-B168
Company:	Crestone Peak Resources	TVD Reference:	23' KB @ 5197.00usft
Project:	DJ BASIN	MD Reference:	23' KB @ 5197.00usft
Site:	S22-T1N-R68W	North Reference:	True
Well:	COSSLETT 1E-22H-B168	Survey Calculation Method:	Minimum Curvature
Wellbore:	OH		
Design:	PLAN #4		

Planned Survey

Measured Depth (usft)	Inclination (°)	Azimuth (°)	Vertical Depth (usft)	+N/-S (usft)	+E/-W (usft)	Vertical Section (usft)	Dogleg Rate (°/100usft)	Build Rate (°/100u)	Comments / Formations
5,100.00	9.68	26.65	5,040.52	639.97	321.19	-622.39	0.00	0.00	
5,200.00	9.68	26.65	5,139.10	655.00	328.74	-637.01	0.00	0.00	
5,300.00	9.68	26.65	5,237.68	670.03	336.28	-651.62	0.00	0.00	
5,400.00	9.68	26.65	5,336.25	685.06	343.82	-666.24	0.00	0.00	
5,500.00	9.68	26.65	5,434.83	700.08	351.36	-680.85	0.00	0.00	
5,600.00	9.68	26.65	5,533.40	715.11	358.91	-695.47	0.00	0.00	
5,700.00	9.68	26.65	5,631.98	730.14	366.45	-710.08	0.00	0.00	
5,800.00	9.68	26.65	5,730.56	745.17	373.99	-724.70	0.00	0.00	
5,900.00	9.68	26.65	5,829.13	760.19	381.53	-739.31	0.00	0.00	
6,000.00	9.68	26.65	5,927.71	775.22	389.08	-753.93	0.00	0.00	
6,100.00	9.68	26.65	6,026.29	790.25	396.62	-768.54	0.00	0.00	
6,200.00	9.68	26.65	6,124.86	805.28	404.16	-783.16	0.00	0.00	
6,300.00	9.68	26.65	6,223.44	820.31	411.70	-797.77	0.00	0.00	
6,400.00	9.68	26.65	6,322.01	835.33	419.24	-812.39	0.00	0.00	
6,500.00	9.68	26.65	6,420.59	850.36	426.79	-827.00	0.00	0.00	
6,600.00	9.68	26.65	6,519.17	865.39	434.33	-841.62	0.00	0.00	
6,700.00	9.68	26.65	6,617.74	880.42	441.87	-856.23	0.00	0.00	
6,800.00	9.68	26.65	6,716.32	895.45	449.41	-870.85	0.00	0.00	
6,807.15	9.68	26.65	6,723.37	896.52	449.95	-871.89	0.00	0.00	
6,900.00	4.52	74.38	6,815.54	904.49	456.99	-879.49	8.00	-5.56	
7,000.00	8.04	147.64	6,915.06	899.64	464.53	-874.25	8.00	3.52	
7,100.00	15.38	164.15	7,012.93	880.94	471.91	-855.19	8.00	7.34	
7,200.00	23.16	169.96	7,107.27	848.76	478.97	-822.69	8.00	7.78	
7,300.00	31.05	172.94	7,196.22	803.74	485.59	-777.38	8.00	7.89	
7,400.00	38.98	174.80	7,278.06	746.73	491.62	-720.14	8.00	7.93	
7,500.00	46.93	176.11	7,351.20	678.86	496.95	-652.08	8.00	7.95	
7,600.00	54.89	177.13	7,414.21	601.45	501.48	-574.54	8.00	7.96	
7,700.00	62.86	177.96	7,465.86	516.00	505.13	-489.01	8.00	7.97	
7,776.52	68.96	178.51	7,497.08	446.21	507.27	-419.21	8.00	7.97	COSSLETT 1E TPZ
7,800.00	70.83	178.68	7,505.16	424.17	507.81	-397.17	8.00	7.97	
7,900.00	78.80	179.33	7,531.33	327.75	509.48	-300.80	8.00	7.98	
8,000.00	86.78	179.95	7,543.87	228.62	510.10	-201.77	8.00	7.98	
8,040.37	90.00	180.19	7,545.00	188.28	510.05	-161.48	8.00	7.98	
8,100.00	90.00	180.19	7,545.00	128.65	509.86	-101.94	0.00	0.00	
8,200.00	90.00	180.19	7,545.00	28.65	509.52	-2.09	0.00	0.00	
8,300.00	90.00	180.19	7,545.00	-71.35	509.19	97.75	0.00	0.00	
8,400.00	90.00	180.19	7,545.00	-171.35	508.86	197.60	0.00	0.00	
8,500.00	90.00	180.19	7,545.00	-271.35	508.53	297.45	0.00	0.00	
8,600.00	90.00	180.19	7,545.00	-371.35	508.20	397.29	0.00	0.00	
8,700.00	90.00	180.19	7,545.00	-471.35	507.87	497.14	0.00	0.00	
8,800.00	90.00	180.19	7,545.00	-571.35	507.54	596.99	0.00	0.00	
8,900.00	90.00	180.19	7,545.00	-671.35	507.20	696.83	0.00	0.00	
9,000.00	90.00	180.19	7,545.00	-771.35	506.87	796.68	0.00	0.00	
9,100.00	90.00	180.19	7,545.00	-871.35	506.54	896.53	0.00	0.00	
9,200.00	90.00	180.19	7,545.00	-971.35	506.21	996.37	0.00	0.00	
9,300.00	90.00	180.19	7,545.00	-1,071.35	505.88	1,096.22	0.00	0.00	
9,400.00	90.00	180.19	7,545.00	-1,171.35	505.55	1,196.07	0.00	0.00	
9,500.00	90.00	180.19	7,545.00	-1,271.35	505.21	1,295.91	0.00	0.00	
9,600.00	90.00	180.19	7,545.00	-1,371.35	504.88	1,395.76	0.00	0.00	
9,700.00	90.00	180.19	7,545.00	-1,471.35	504.55	1,495.61	0.00	0.00	
9,800.00	90.00	180.19	7,545.00	-1,571.34	504.22	1,595.45	0.00	0.00	
9,900.00	90.00	180.19	7,545.00	-1,671.34	503.89	1,695.30	0.00	0.00	

Cathedral Energy Services

Planning Report

Database:	USA EDM 5000 Multi Users DB	Local Co-ordinate Reference:	Well COSSLETT 1E-22H-B168
Company:	Crestone Peak Resources	TVD Reference:	23' KB @ 5197.00usft
Project:	DJ BASIN	MD Reference:	23' KB @ 5197.00usft
Site:	S22-T1N-R68W	North Reference:	True
Well:	COSSLETT 1E-22H-B168	Survey Calculation Method:	Minimum Curvature
Wellbore:	OH		
Design:	PLAN #4		

Planned Survey

Measured Depth (usft)	Inclination (°)	Azimuth (°)	Vertical Depth (usft)	+N/-S (usft)	+E/-W (usft)	Vertical Section (usft)	Dogleg Rate (°/100usft)	Build Rate (°/100u)	Comments / Formations
10,000.00	90.00	180.19	7,545.00	-1,771.34	503.56	1,795.15	0.00	0.00	
10,100.00	90.00	180.19	7,545.00	-1,871.34	503.22	1,894.99	0.00	0.00	
10,200.00	90.00	180.19	7,545.00	-1,971.34	502.89	1,994.84	0.00	0.00	
10,300.00	90.00	180.19	7,545.00	-2,071.34	502.56	2,094.69	0.00	0.00	
10,400.00	90.00	180.19	7,545.00	-2,171.34	502.23	2,194.53	0.00	0.00	
10,500.00	90.00	180.19	7,545.00	-2,271.34	501.90	2,294.38	0.00	0.00	
10,600.00	90.00	180.19	7,545.00	-2,371.34	501.57	2,394.23	0.00	0.00	
10,700.00	90.00	180.19	7,545.00	-2,471.34	501.23	2,494.07	0.00	0.00	
10,800.00	90.00	180.19	7,545.00	-2,571.34	500.90	2,593.92	0.00	0.00	
10,900.00	90.00	180.19	7,545.00	-2,671.34	500.57	2,693.77	0.00	0.00	
11,000.00	90.00	180.19	7,545.00	-2,771.34	500.24	2,793.61	0.00	0.00	
11,100.00	90.00	180.19	7,545.00	-2,871.34	499.91	2,893.46	0.00	0.00	
11,200.00	90.00	180.19	7,545.00	-2,971.34	499.58	2,993.31	0.00	0.00	
11,300.00	90.00	180.19	7,545.00	-3,071.34	499.25	3,093.15	0.00	0.00	
11,400.00	90.00	180.19	7,545.00	-3,171.34	498.91	3,193.00	0.00	0.00	
11,500.00	90.00	180.19	7,545.00	-3,271.34	498.58	3,292.85	0.00	0.00	
11,600.00	90.00	180.19	7,545.00	-3,371.33	498.25	3,392.69	0.00	0.00	
11,700.00	90.00	180.19	7,545.00	-3,471.33	497.92	3,492.54	0.00	0.00	
11,800.00	90.00	180.19	7,545.00	-3,571.33	497.59	3,592.39	0.00	0.00	
11,900.00	90.00	180.19	7,545.00	-3,671.33	497.26	3,692.23	0.00	0.00	
12,000.00	90.00	180.19	7,545.00	-3,771.33	496.92	3,792.08	0.00	0.00	
12,100.00	90.00	180.19	7,545.00	-3,871.33	496.59	3,891.93	0.00	0.00	
12,200.00	90.00	180.19	7,545.00	-3,971.33	496.26	3,991.77	0.00	0.00	
12,300.00	90.00	180.19	7,545.00	-4,071.33	495.93	4,091.62	0.00	0.00	
12,400.00	90.00	180.19	7,545.00	-4,171.33	495.60	4,191.47	0.00	0.00	
12,500.00	90.00	180.19	7,545.00	-4,271.33	495.27	4,291.32	0.00	0.00	
12,600.00	90.00	180.19	7,545.00	-4,371.33	494.93	4,391.16	0.00	0.00	
12,700.00	90.00	180.19	7,545.00	-4,471.33	494.60	4,491.01	0.00	0.00	
12,800.00	90.00	180.19	7,545.00	-4,571.33	494.27	4,590.86	0.00	0.00	
12,900.00	90.00	180.19	7,545.00	-4,671.33	493.94	4,690.70	0.00	0.00	
13,000.00	90.00	180.19	7,545.00	-4,771.33	493.61	4,790.55	0.00	0.00	
13,100.00	90.00	180.19	7,545.00	-4,871.33	493.28	4,890.40	0.00	0.00	
13,200.00	90.00	180.19	7,545.00	-4,971.33	492.94	4,990.24	0.00	0.00	
13,300.00	90.00	180.19	7,545.00	-5,071.33	492.61	5,090.09	0.00	0.00	
13,400.00	90.00	180.19	7,545.00	-5,171.33	492.28	5,189.94	0.00	0.00	
13,500.00	90.00	180.19	7,545.00	-5,271.32	491.95	5,289.78	0.00	0.00	
13,600.00	90.00	180.19	7,545.00	-5,371.32	491.62	5,389.63	0.00	0.00	
13,700.00	90.00	180.19	7,545.00	-5,471.32	491.29	5,489.48	0.00	0.00	
13,800.00	90.00	180.19	7,545.00	-5,571.32	490.95	5,589.32	0.00	0.00	
13,900.00	90.00	180.19	7,545.00	-5,671.32	490.62	5,689.17	0.00	0.00	
14,000.00	90.00	180.19	7,545.00	-5,771.32	490.29	5,789.02	0.00	0.00	
14,100.00	90.00	180.19	7,545.00	-5,871.32	489.96	5,888.86	0.00	0.00	
14,200.00	90.00	180.19	7,545.00	-5,971.32	489.63	5,988.71	0.00	0.00	
14,300.00	90.00	180.19	7,545.00	-6,071.32	489.30	6,088.56	0.00	0.00	
14,400.00	90.00	180.19	7,545.00	-6,171.32	488.97	6,188.40	0.00	0.00	
14,500.00	90.00	180.19	7,545.00	-6,271.32	488.63	6,288.25	0.00	0.00	
14,600.00	90.00	180.19	7,545.00	-6,371.32	488.30	6,388.10	0.00	0.00	
14,700.00	90.00	180.19	7,545.00	-6,471.32	487.97	6,487.94	0.00	0.00	
14,800.00	90.00	180.19	7,545.00	-6,571.32	487.64	6,587.79	0.00	0.00	
14,900.00	90.00	180.19	7,545.00	-6,671.32	487.31	6,687.64	0.00	0.00	
15,000.00	90.00	180.19	7,545.00	-6,771.32	486.98	6,787.48	0.00	0.00	
15,100.00	90.00	180.19	7,545.00	-6,871.32	486.64	6,887.33	0.00	0.00	

Cathedral Energy Services

Planning Report

Database:	USA EDM 5000 Multi Users DB	Local Co-ordinate Reference:	Well COSSLETT 1E-22H-B168
Company:	Crestone Peak Resources	TVD Reference:	23' KB @ 5197.00usft
Project:	DJ BASIN	MD Reference:	23' KB @ 5197.00usft
Site:	S22-T1N-R68W	North Reference:	True
Well:	COSSLETT 1E-22H-B168	Survey Calculation Method:	Minimum Curvature
Wellbore:	OH		
Design:	PLAN #4		

Planned Survey

Measured Depth (usft)	Inclination (°)	Azimuth (°)	Vertical Depth (usft)	+N/-S (usft)	+E/-W (usft)	Vertical Section (usft)	Dogleg Rate (°/100usft)	Build Rate (°/100u)	Comments / Formations
15,200.00	90.00	180.19	7,545.00	-6,971.32	486.31	6,987.18	0.00	0.00	
15,300.00	90.00	180.19	7,545.00	-7,071.31	485.98	7,087.02	0.00	0.00	
15,400.00	90.00	180.19	7,545.00	-7,171.31	485.65	7,186.87	0.00	0.00	
15,500.00	90.00	180.19	7,545.00	-7,271.31	485.32	7,286.72	0.00	0.00	
15,600.00	90.00	180.19	7,545.00	-7,371.31	484.99	7,386.56	0.00	0.00	
15,700.00	90.00	180.19	7,545.00	-7,471.31	484.65	7,486.41	0.00	0.00	
15,800.00	90.00	180.19	7,545.00	-7,571.31	484.32	7,586.26	0.00	0.00	
15,900.00	90.00	180.19	7,545.00	-7,671.31	483.99	7,686.10	0.00	0.00	
16,000.00	90.00	180.19	7,545.00	-7,771.31	483.66	7,785.95	0.00	0.00	
16,100.00	90.00	180.19	7,545.00	-7,871.31	483.33	7,885.80	0.00	0.00	
16,200.00	90.00	180.19	7,545.00	-7,971.31	483.00	7,985.64	0.00	0.00	
16,300.00	90.00	180.19	7,545.00	-8,071.31	482.66	8,085.49	0.00	0.00	
16,400.00	90.00	180.19	7,545.00	-8,171.31	482.33	8,185.34	0.00	0.00	
16,500.00	90.00	180.19	7,545.00	-8,271.31	482.00	8,285.18	0.00	0.00	
16,600.00	90.00	180.19	7,545.00	-8,371.31	481.67	8,385.03	0.00	0.00	
16,700.00	90.00	180.19	7,545.00	-8,471.31	481.34	8,484.88	0.00	0.00	
16,800.00	90.00	180.19	7,545.00	-8,571.31	481.01	8,584.72	0.00	0.00	
16,900.00	90.00	180.19	7,545.00	-8,671.31	480.67	8,684.57	0.00	0.00	
17,000.00	90.00	180.19	7,545.00	-8,771.31	480.34	8,784.42	0.00	0.00	
17,100.00	90.00	180.19	7,545.00	-8,871.30	480.01	8,884.26	0.00	0.00	
17,200.00	90.00	180.19	7,545.00	-8,971.30	479.68	8,984.11	0.00	0.00	
17,300.00	90.00	180.19	7,545.00	-9,071.30	479.35	9,083.96	0.00	0.00	
17,400.00	90.00	180.19	7,545.00	-9,171.30	479.02	9,183.80	0.00	0.00	
17,420.37	90.00	180.19	7,545.00	-9,191.67	478.95	9,204.14	0.00	0.00	COSSLETT 1E PBHL - COSSLETT 1E PBHL P

Targets

Target Name

- hit/miss target - Shape	Dip Angle (°)	Dip Dir. (°)	TVD (usft)	+N/-S (usft)	+E/-W (usft)	Northing (usft)	Easting (usft)	Latitude	Longitude
COSSLETT 1E TPZ - plan misses target center by 3.69usft at 7776.50usft MD (7497.08 TVD, 446.22 N, 507.27 E) - Point	0.00	0.00	7,497.04	446.32	510.96	1,258,787.65	3,143,875.96	40.042616	-104.986115
COSSLETT 1E PBHL - plan misses target center by 5.00usft at 17420.37usft MD (7545.00 TVD, -9191.67 N, 478.95 E) - Point	0.00	0.00	7,550.00	-9,191.67	478.95	1,249,149.64	3,143,899.60	40.016158	-104.986230
COSSLETT 1E PBHL P: - plan hits target center - Point	0.00	0.00	7,545.00	-9,191.67	478.95	1,249,149.64	3,143,899.60	40.016158	-104.986230