

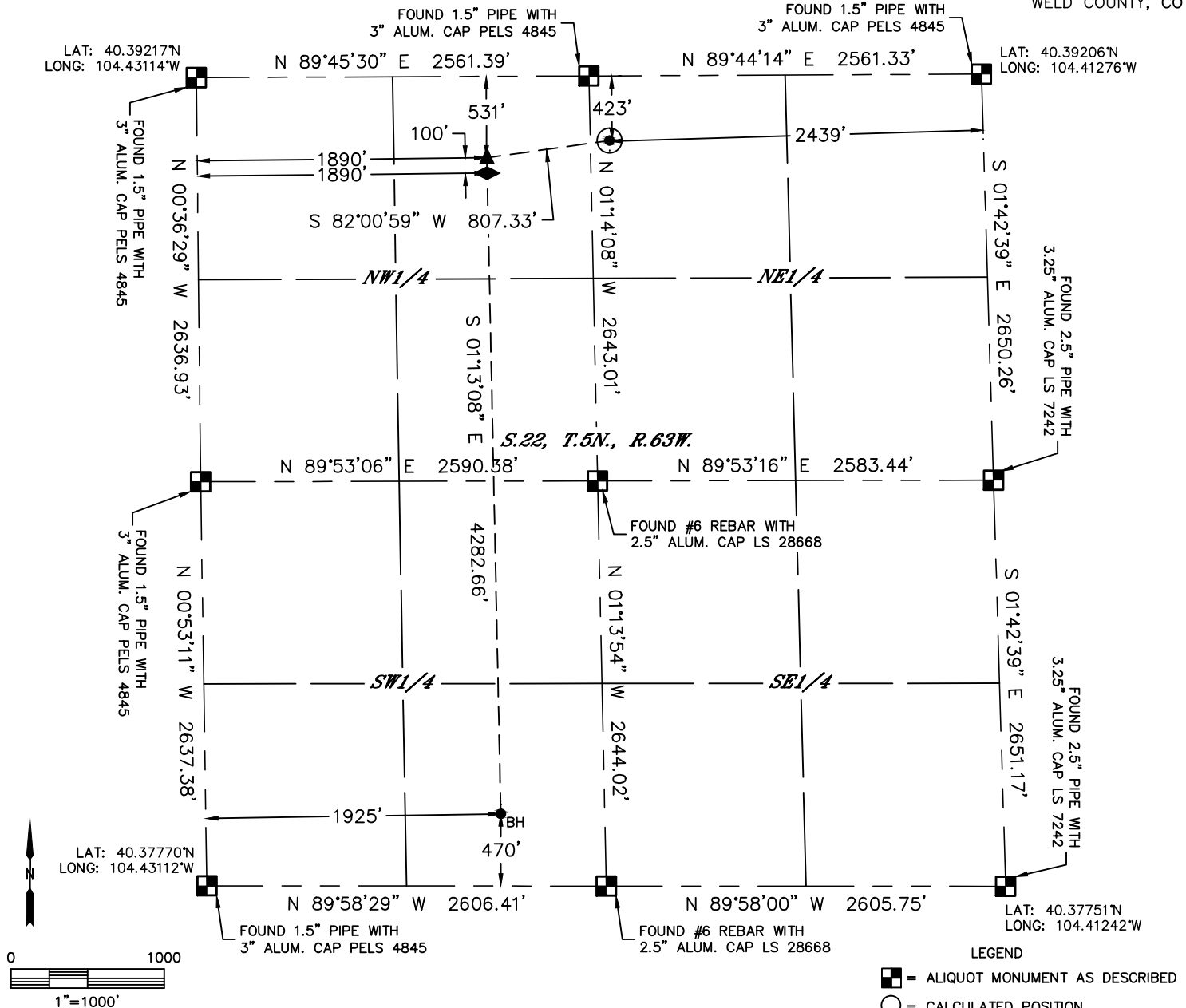


Lat40°, Inc. 6250 W. 10th Street, Unit 2, Greeley, CO 970-515-5294

# WELL LOCATION CERTIFICATE

NORTH PLATTE FEDERAL 21-24-22HC

SECTION: 22  
TOWNSHIP: 5N  
RANGE: 63W  
6TH. P.M.  
WELD COUNTY, CO



CLIENT: BONANZA CREEK ENERGY				LANDMAN: JULIE VIGIL		
INSTRUMENT OPERATOR: CHASE MILLER				SURVEY DATE: 8/10/2015		SURFACE USE: EX. PAD/RANGELAND
SHL FOOTAGE	SHL LAT°	SHL LONG°	SHL PDOP	SHL ELEV	SHL 1/4/1/4	SHL S-T-R
423 FNL 2439 FEL	40.39095	-104.42149	1.8	4648	NWNE	22-5-63

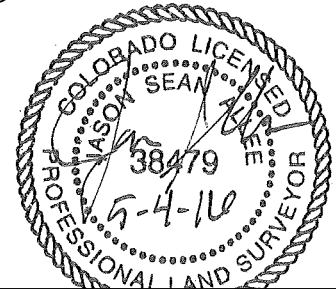
BHL FOOTAGE	BHL LAT°	BHL LONG°	BHL S-T-R	EP LAT°	EP LONG°	EP S-T-R
470 FSL 1925 FWL	40.37892	-104.42422	22-5-63	40.39067	-104.42436	22-5-63

NEAREST CULTURAL ITEMS	
BUILDING	±4053' SE
BUILDING UNIT	±4053' SE
HIGH OCCUPANCY BUILDING UNIT	+5280'
DESIGNATED OUTSIDE ACTIVITY AREA	+5280'
PUBLIC ROAD	+5280'
ABOVE GROUND UTILITY	±3862' SE
RAILROAD	+5280'
PROPERTY LINE	±423' N

## NOTE:

- 1) Bearings shown are Grid Bearings of the Colorado State Plane Coordinate System, North Zone, North American Datum 1983. The lineal dimensions as contained herein are based upon the "U.S. Survey Foot."
- 2) Distances to section lines measured at 90 degrees from said section lines.
- 3) Ground elevations are based on an observed GPS elevation (NAVD 1988 DATUM).
- 4) Latitude and Longitude shown are (NAD 83 DATUM).
- 5) IMPROVEMENTS: See LOCATION DRAWING for all visible improvements within 500' of oil and gas location.

- LEGEND
- = ALIQUOT MONUMENT AS DESCRIBED
  - = CALCULATED POSITION
  - ⊙ = SURFACE HOLE LOCATION (SHL)
  - ▲ = ENTRY POINT LOCATION (EP)
  - ◆ = TOP OF PRODUCTION ZONE (TPZ)
  - = BOTTOM HOLE LOCATION (BHL)
  - ⊕ = EXISTING WELL
  - ⊖ = ABANDONED WELL



Jason S. Allee-On behalf of Lat40°, Inc.  
Colorado Licensed Professional Land Surveyor No. 38479  
DATE: rev5/4/2016  
PROJECT#: 2015005