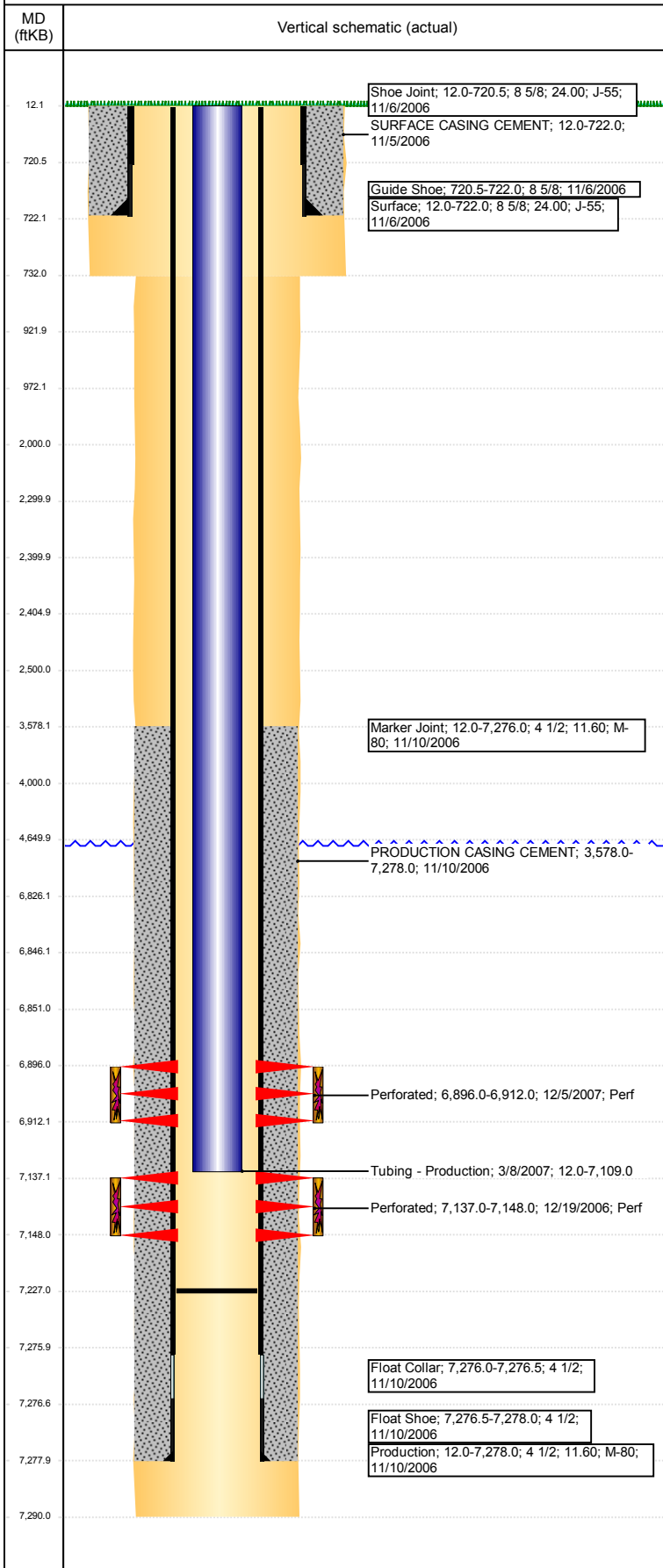


Well Name: LAMP H25-31

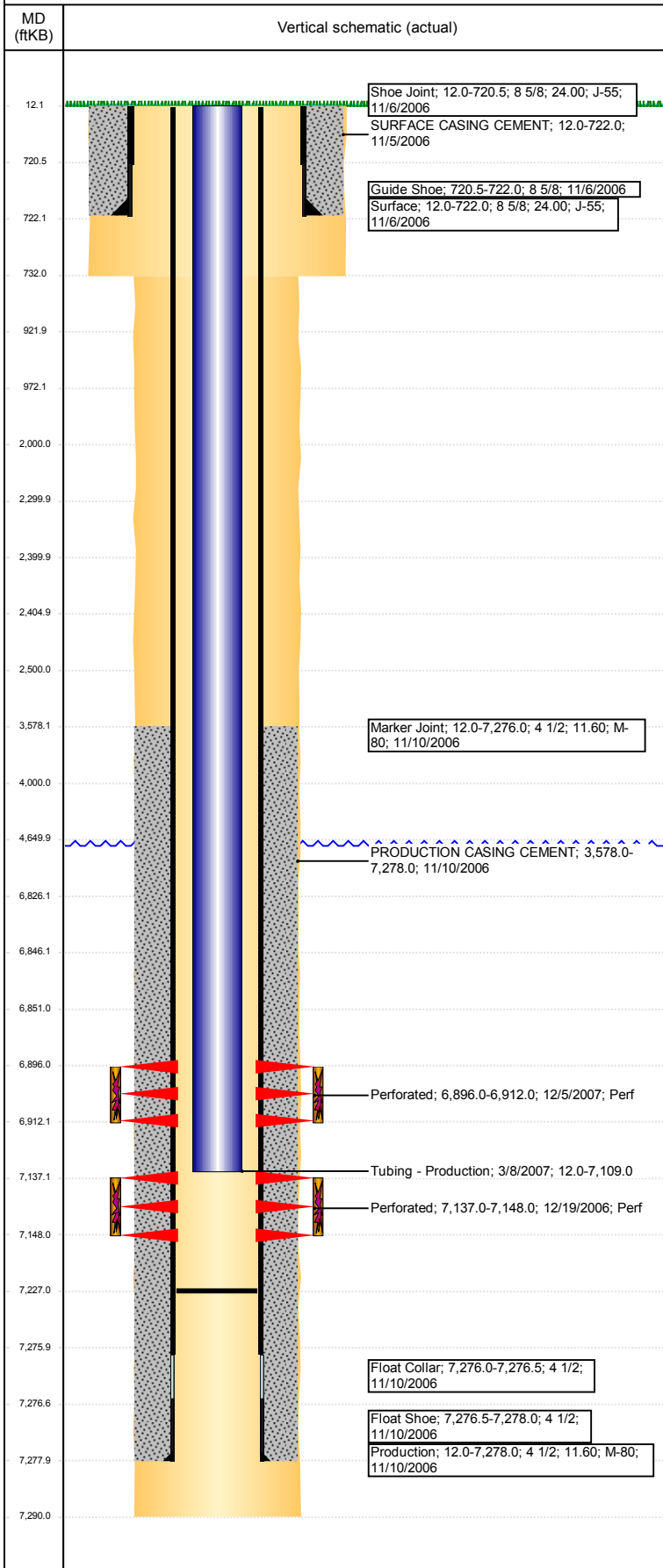
VERTICAL - ORIGINAL HOLE, 1/8/2018 11:21:30 AM



Well Header							
API 05-123-24353	Business Unit DJ BASIN		District 15		Well Config VERTICAL		
Original KB Elevation (ft) 4,867	KB - GL / MSL (ftKB) 12.00		Spud Date 11/5/2006		P & A Date		
Comment CIPF PUSHED TO 7227'							
Directions To Well							
Congressional Location							
Quarter 3 NE	Quarter 4 NE	Section 26	Township 3	Twntshp N/S Dir N	Range 65	Range E/W Dir W	
Bottom Hole Location							
North-South Distance (ft)		From N or S Line		East-West Distance (ft)		From E or W Line	
Plug Back Total Depths							
Date	Depth (ftKB)	Method		Com			
11/29/2006	7,204.0	CASED HOLE LOG		DEPTH LOGGER ON CBL			
3/8/2007	7,227.0	TAG		CLEAN OUT & TAG.			
Wellbore Sections							
Section Des		Size (in)		Act Top, MD (ftKB)		Act Btm, MD (ftKB)	
SURFACE		12 1/4		12		732	
PRODUCTION		7 7/8		732		7,290	
Zone Statuses							
Zone Name	Status Date	Status	Fluid Type	Job	Prod Method		
CODELL	1/8/2007	PR	Oil	DRILLING/CO...	Flowing		
CODELL	12/7/2010	PR	Water				
NIOBRARA	1/8/2007	PR	Oil	DRILLING/CO...	Flowing		
NIOBRARA	12/7/2010	PR	Water				
NIOBRARA	3/22/2017	SI					
Casing Strings							
Surface, 722.0ftKB							
Casing Description	Run Date	OD (in)	Wt/Len (l...	Grade	Top, MD (ft...	MD (ftKB)	
Surface	11/6/2006	8 5/8	24.00	J-55	12.0	722.0	
Production, 7,278.0ftKB							
Casing Description	Run Date	OD (in)	Wt/Len (l...	Grade	Top, MD (ft...	MD (ftKB)	
Production	11/10/2006	4 1/2	11.60	M-80	12.0	7,278.0	
Cement							
Description				Top Depth (ftKB)		Bottom Depth (ftKB)	
SURFACE CASING CEMENT				12.0		722.0	
Description				Top Depth (ftKB)		Bottom Depth (ftKB)	
PRODUCTION CASING CEMENT				3,578.0		7,278.0	
Description				Top Depth (ftKB)		Bottom Depth (ftKB)	
Dump Bail				6,826.0		6,846.0	
Description				Top Depth (ftKB)		Bottom Depth (ftKB)	
Balance Plug				4,000.0		4,650.0	
Description				Top Depth (ftKB)		Bottom Depth (ftKB)	
Balance Plug				2,300.0		2,400.0	
Description				Top Depth (ftKB)		Bottom Depth (ftKB)	
Balance Plug				2,405.0		2,500.0	
Description				Top Depth (ftKB)		Bottom Depth (ftKB)	
Cement Squeeze				2,000.0		2,500.0	
Description				Top Depth (ftKB)		Bottom Depth (ftKB)	
Balance Plug				922.0		972.0	
Description				Top Depth (ftKB)		Bottom Depth (ftKB)	
Balance Plug				722.0		922.0	
Description				Top Depth (ftKB)		Bottom Depth (ftKB)	
Balance Plug				12.0		722.0	
Tubing Strings							
Tubing Description	Run Date	String...	ID (in)	Wt (lb/ft)	Grade	Len (ft)	Set De...
Tubing - Production	3/8/2007	2 3/8	2.00	4.70	J-55	7,097.00	
Tubing Components							
Item Des	OD (in)	Wt (lb/ft)	Grade	Jts	Len (ft)	Btm (ftKB)	Btm (TVD) (ftKB)
EUE 8rd Tubing	2 3/8	4.70	J-55	231	7,095.50	7,107.5	
Seating Nipple	2 3/8			1	1.00	7,108.5	
Notched collar	2 3/8			1	0.50	7,109.0	
Other In Hole							
Run Date	Des			OD (in)	Top (ftKB)	Btm (ftKB)	
1/4/2018	Cement Retainer			4	2,400.0	2,405.0	

Well Name: LAMP H25-31

VERTICAL - ORIGINAL HOLE, 1/8/2018 11:21:31 AM



Other In Hole				
Run Date	Des	OD (in)	Top (ftKB)	Btm (ftKB)
1/4/2018	Cast Iron Bridge Plug	4	6,846.0	6,851.0

Logs				
Date	Type	Top, MD (ftKB)	Btm, MD (ftKB)	
11/10/2006	COMPENSATED DENSITY	2,600.0	7,266.0	
11/10/2006	INDUCTION	12.0	7,286.0	
11/29/2006	CBL/CCL/GR	2,886.0	7,202.0	
10/13/2014	GYRO	10.0	7,000.0	

Perforation Data					
Linked Zone	Bnch/St g	Sum of Entered Shot Total	Top (ftKB)	Btm (ftKB)	Date
CODELL, ORIGINAL HOLE		0	2,500.00	2,500.00	1/4/2018
NIOBRARA, ORIGINAL HOLE		64	6,896.00	6,912.00	12/5/2007
CODELL, ORIGINAL HOLE		44	7,137.00	7,148.00	12/19/2006
Total (Sum)		108			

Stimulation Intervals		
Start Date 1/5/2007	Primary Job Type DRILLING/COMPLETION - ORIGINAL	
Technical Result	Tech Result Details	Tech Result Note
Comment PUT A 14 CHOKE IN FOR TANK ROOM		
Start Date 1/5/2007	Primary Job Type DRILLING/COMPLETION - ORIGINAL	
Technical Result	Tech Result Details	Tech Result Note
Comment PUT A 14 CHOKE IN FOR TANK ROOM		