



SRC ENERGY

Operator: SRC Energy
Well Name: Lindblad #20-25X
Legal: NENW, Section 20, Township 6N, Range 66W
Location: Weld County, CO
API: 05-123-26734

Deepest Water Well
Within 1 Mile = 600'





Wellbore History

Spud Date: 1/27/2011
Surf Csg: 8.625", 24# @ 698' – 277 sx
Prod Csg: 4.5", 11.6# @ 7323' – 650 sx
TOC: 1984' (CBL)
Perfs: NB-CD: 6910' – 7172'

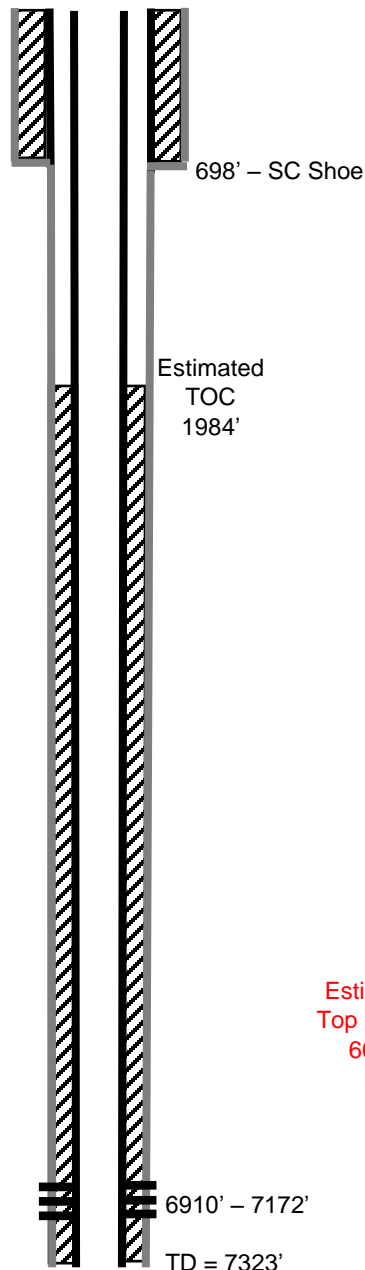
P&A Procedure

Set CIBP @ 6835'
Set 17 sx on top of CIBP (173' plug)
Pmp 29 sx @ 2500' (300' plug)
Cut Casing @ 798'
Pmp 325 sx @ 848' to surface

Key

-  Existing Cement Coverage
-  CICR
-  Cement Pumped
-  CIBP

Current



Proposed

