

Location:	COLORADO	Slot:	SLOT#24 STATE NORTH PLATTE J24-F21-26HNC (WELL 5, STATE NORTH PLATTE 1-26 PAD)
Field:	WELD COUNTY	Well:	STATE NORTH PLATTE J24-F21-26HNC
Facility:	SEC.26-T5N-R63W	Wellbore:	STATE NORTH PLATTE J24-F21-26HNC PWB

Location:	COLORADO	Slot:	SLOT#24 STATE NORTH PLATTE J24-F21-26HNC (WELL 5, STATE NORTH PLATTE I-26 PAD)
Field:	WELD COUNTY	Well:	STATE NORTH PLATTE J24-F21-26HNC
Facility:	SEC.26-T5N-R63W	Wellbore:	STATE NORTH PLATTE J24-F21-26HNC PWB

Grid System: NAD83 / Lambert Colorado SP, Northern Zone (501), US feet

True vertical depths are referenced to RIG (4555'GL + 17'RKB) (RKB)

\* = Wellpath was transformed from a different geodetic datum

Measured depths are referenced to RIG (4555'GL + 17'RKB) (RKB)

North Reference: True north

RIG (4555'GL + 17'RKB) (RKB) to Mean Sea Level: 4572 feet

Scale: True distance

Mean Sea Level to Mud line (At Slot: SLOT#24 STATE NORTH PLATTE J24-F21-20HNC (WELL 5, STATE NORTH PLATTE I-26 PAD)): 0 feet

Depths are in feet

Coordinates are in feet referenced to Slot

Created by: ingmjmr on 2017-11-02

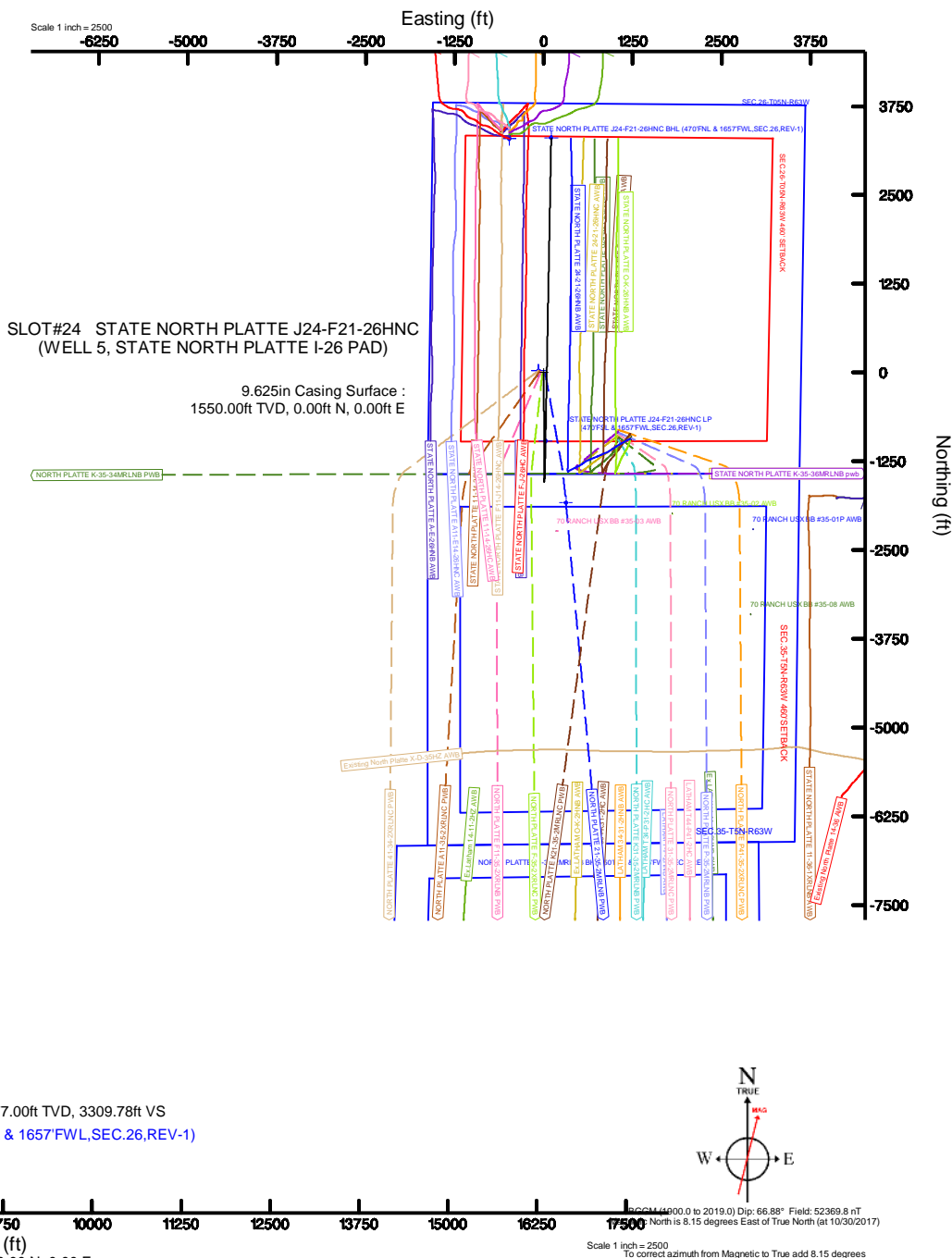
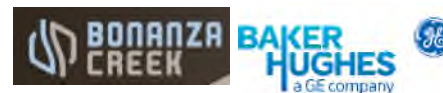
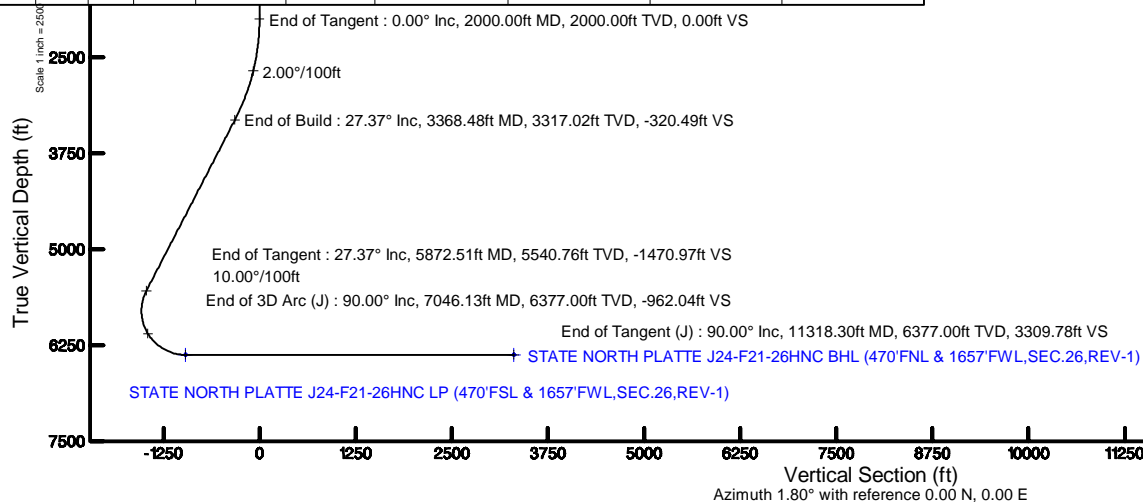
Facility Name				Grid East (US 1)	Grid North (US 1)	Latitude	Longitude
SEC 35-T0N-R25W				3303550.838	1301774.535	40°22'34.464"N	104°24'32.436"W
Site	Local N (ft)	Local E (ft)	Grid East (US 1)	Grid North (US 1)	Latitude	Longitude	
SLOT624 STATE NORTH PLATE .204-F21-289INC (WELL 5, STATE NORTH PLATE 1-26 PAD)	-636.71	610.54	3304602.354	1308465.732	40°22'01.462"N	104°24'34.546"W	
(US 10555.02 ± 17.906) (R0K) to Mud line (A) Site: SLOT624 STATE NORTH PLATE .204-F21-289INC (WELL 5, STATE NORTH PLATE 1-26 PAD)							45721
(Mean Sea Level to Mud line (A) Site: SLOT624 STATE NORTH PLATE .204-F21-289INC (WELL 5, STATE NORTH PLATE 1-26 PAD))							01
(US 10555.02 ± 17.906) (R0K) to Mean Sea Lev							45721

Design Comment	MD (ft)	Inc (°)	Az (°)	TVD (ft)	Local N (ft)	Local E (ft)	DLS (°/100ft)	VS (ft)
Tie On	17.00	0.000	179.809	17.00	0.00	0.00	0.00	0.00
End of Tangent	2000.00	0.000	179.809	2000.00	0.00	0.00	0.00	0.00
End of Build	3368.48	27.370	179.809	3317.02	-320.68	1.07	2.00	-320.49
End of Tangent	5872.51	27.370	179.809	5540.76	-1471.85	4.91	0.00	-1470.97
End of 3D Arc (J)	7046.13	90.000	1.070	6377.00	-963.26	23.94	10.00	-962.04
End of Tangent (J)	11318.30	90.000	1.070	6377.00	3308.16	103.72	0.00	3309.78

Name	Start MD (R)	End MD (R)	Interval (R)	Start TVD (R)	End TVD (R)	Start Local N (R)	Start Local E (R)	End Local N (R)	End Local E (R)	Wellbore
9.625in Casing Surface	17.00	1550.00	1533.00	17.00	1550.00	0.00	0.00	0.00	0.00	STATE NORTH PLATTE J24-F21-26HNC PWB

Start MD (ft)	End MD (ft)	Tool	Model	Log Name/Comment	Wellbore
17.00	1550.00	BHI NavTrak	BHI NavTrak (Rotating+Axial Corr)		STATE NORTH PLATTE J24-F21-26HNC PWB
1550.00	11318.30	BHI AutoTrak Curve	BHI AutoTrak Curve (Axial Corr, Short spacing)		STATE NORTH PLATTE J24-F21-26HNC PWB

MD (ft)	Inc (°)	Az (°)	TVD (ft)	Local N (ft)	Local E (ft)	Grid East (US ft)	Grid North (US ft)	Latitude	Longitude
11318.30	90.000	1.070	6377.00	3308.16	103.72	3304665.28	1381754.77	40°22'34.182"N	104°24'23.208"W





# Planned Wellpath Report

STATE NORTH PLATTE J24-F21-26HNC (REV-A.0) PWP

Page 1 of 7



## REFERENCE WELLPATH IDENTIFICATION

Operator	BONANZA CREEK OIL COMPANY	Slot	SLOT#23 STATE NORTH PLATTE J24-F21-26HNC (WELL 5, STATE NORTH PLATTE I-26 PAD)
Area	COLORADO	Well	STATE NORTH PLATTE J24-F21-26HNC
Field	WELD COUNTY	Wellbore	STATE NORTH PLATTE J24-F21-26HNC PWB
Facility	SEC.26-T5N-R63W		

## REPORT SETUP INFORMATION

Projection System	NAD83 / Lambert Colorado SP, Northern Zone (501), US feet	Software System	WellArchitect® 5.0
North Reference	True	User	Ingmjmr
Scale	0.999959	Report Generated	11/2/2017 at 11:11:59 AM
Convergence at slot	0.71° East	Database/Source file	Denver/STATE_NORTH_PLATTE_J24-F21-26HNC__REV-A.0__PWP.xml

## WELLPATH LOCATION

	Local coordinates		Grid coordinates		Geographic coordinates	
	North[ft]	East[ft]	Easting[US ft]	Northing[US ft]	Latitude	Longitude
Slot Location	-3336.71	610.54	3304602.35	1378445.73	40°22'01.492"N	104°24'24.548"W
Facility Reference Pt			3303950.84	1381774.54	40°22'34.464"N	104°24'32.436"W
Field Reference Pt			3224525.77	1254425.87	40°01'44.400"N	104°41'53.556"W

## WELLPATH DATUM

Calculation method	Minimum curvature	RIG (4555'GL + 17'RKB) (RKB) to Facility Vertical Datum	4572.00ft
Horizontal Reference Pt	Slot	RIG (4555'GL + 17'RKB) (RKB) to Mean Sea Level	4572.00ft
Vertical Reference Pt	RIG (4555'GL + 17'RKB) (RKB)	RIG (4555'GL + 17'RKB) (RKB) to Mud Line at Slot (SLOT#23 STATE NORTH PLATTE J24-F21-26HNC (WELL 5, STATE NORTH PLATTE I-26 PAD))	4572.00ft
MD Reference Pt	RIG (4555'GL + 17'RKB) (RKB)	Section Origin	N 0.00, E 0.00 ft
Field Vertical Reference	Mean Sea Level	Section Azimuth	1.80°



# Planned Wellpath Report

## STATE NORTH PLATTE J24-F21-26HNC (REV-A.0) PWP

Page 2 of 7



REFERENCE WELLPATH IDENTIFICATION			
Operator	BONANZA CREEK OIL COMPANY	Slot	SLOT#23 STATE NORTH PLATTE J24-F21-26HNC (WELL 5, STATE NORTH PLATTE I-26 PAD)
Area	COLORADO	Well	STATE NORTH PLATTE J24-F21-26HNC
Field	WELD COUNTY	Wellbore	STATE NORTH PLATTE J24-F21-26HNC PWB
Facility	SEC.26-T5N-R63W		

WELLPATH DATA (120 stations) † = interpolated/extrapolated station										
MD [ft]	Inclination [°]	Azimuth [°]	TVD [ft]	Vert Sect [ft]	North [ft]	East [ft]	Latitude	Longitude	DLS [°/100ft]	Comments
0.00†	0.000	179.809	0.00	0.00	0.00	0.00	40°22'01.492"N	104°24'24.548"W	0.00	
17.00	0.000	179.809	17.00	0.00	0.00	0.00	40°22'01.492"N	104°24'24.548"W	0.00	Tie On
117.00†	0.000	179.809	117.00	0.00	0.00	0.00	40°22'01.492"N	104°24'24.548"W	0.00	
217.00†	0.000	179.809	217.00	0.00	0.00	0.00	40°22'01.492"N	104°24'24.548"W	0.00	
317.00†	0.000	179.809	317.00	0.00	0.00	0.00	40°22'01.492"N	104°24'24.548"W	0.00	
417.00†	0.000	179.809	417.00	0.00	0.00	0.00	40°22'01.492"N	104°24'24.548"W	0.00	
517.00†	0.000	179.809	517.00	0.00	0.00	0.00	40°22'01.492"N	104°24'24.548"W	0.00	
617.00†	0.000	179.809	617.00	0.00	0.00	0.00	40°22'01.492"N	104°24'24.548"W	0.00	
717.00†	0.000	179.809	717.00	0.00	0.00	0.00	40°22'01.492"N	104°24'24.548"W	0.00	
817.00†	0.000	179.809	817.00	0.00	0.00	0.00	40°22'01.492"N	104°24'24.548"W	0.00	
917.00†	0.000	179.809	917.00	0.00	0.00	0.00	40°22'01.492"N	104°24'24.548"W	0.00	
1017.00†	0.000	179.809	1017.00	0.00	0.00	0.00	40°22'01.492"N	104°24'24.548"W	0.00	
1117.00†	0.000	179.809	1117.00	0.00	0.00	0.00	40°22'01.492"N	104°24'24.548"W	0.00	
1217.00†	0.000	179.809	1217.00	0.00	0.00	0.00	40°22'01.492"N	104°24'24.548"W	0.00	
1317.00†	0.000	179.809	1317.00	0.00	0.00	0.00	40°22'01.492"N	104°24'24.548"W	0.00	
1417.00†	0.000	179.809	1417.00	0.00	0.00	0.00	40°22'01.492"N	104°24'24.548"W	0.00	
1517.00†	0.000	179.809	1517.00	0.00	0.00	0.00	40°22'01.492"N	104°24'24.548"W	0.00	
1617.00†	0.000	179.809	1617.00	0.00	0.00	0.00	40°22'01.492"N	104°24'24.548"W	0.00	
1717.00†	0.000	179.809	1717.00	0.00	0.00	0.00	40°22'01.492"N	104°24'24.548"W	0.00	
1817.00†	0.000	179.809	1817.00	0.00	0.00	0.00	40°22'01.492"N	104°24'24.548"W	0.00	
1917.00†	0.000	179.809	1917.00	0.00	0.00	0.00	40°22'01.492"N	104°24'24.548"W	0.00	
2000.00	0.000	179.809	2000.00	0.00	0.00	0.00	40°22'01.492"N	104°24'24.548"W	0.00	End of Tangent
2017.00†	0.340	179.809	2017.00	-0.05	-0.05	0.00	40°22'01.491"N	104°24'24.548"W	2.00	
2117.00†	2.340	179.809	2116.97	-2.39	-2.39	0.01	40°22'01.468"N	104°24'24.548"W	2.00	
2217.00†	4.340	179.809	2216.79	-8.21	-8.21	0.03	40°22'01.410"N	104°24'24.548"W	2.00	
2317.00†	6.340	179.809	2316.35	-17.51	-17.52	0.06	40°22'01.318"N	104°24'24.548"W	2.00	
2417.00†	8.340	179.809	2415.53	-30.28	-30.30	0.10	40°22'01.192"N	104°24'24.547"W	2.00	
2517.00†	10.340	179.809	2514.20	-46.50	-46.52	0.16	40°22'01.032"N	104°24'24.546"W	2.00	
2617.00†	12.340	179.809	2612.24	-66.15	-66.19	0.22	40°22'00.838"N	104°24'24.546"W	2.00	
2717.00†	14.340	179.809	2709.54	-89.20	-89.26	0.30	40°22'00.610"N	104°24'24.545"W	2.00	



# Planned Wellpath Report

STATE NORTH PLATTE J24-F21-26HNC (REV-A.0) PWP

Page 3 of 7



REFERENCE WELLPATH IDENTIFICATION			
Operator	BONANZA CREEK OIL COMPANY	Slot	SLOT#23 STATE NORTH PLATTE J24-F21-26HNC (WELL 5, STATE NORTH PLATTE I-26 PAD)
Area	COLORADO	Well	STATE NORTH PLATTE J24-F21-26HNC
Field	WELD COUNTY	Wellbore	STATE NORTH PLATTE J24-F21-26HNC PWB
Facility	SEC.26-T5N-R63W		

WELLPATH DATA (120 stations) † = interpolated/extrapolated station										
MD [ft]	Inclination [°]	Azimuth [°]	TVD [ft]	Vert Sect [ft]	North [ft]	East [ft]	Latitude	Longitude	DLS [°/100ft]	Comments
2817.00†	16.340	179.809	2805.97	-115.64	-115.71	0.39	40°22'00.348"N	104°24'24.543"W	2.00	
2917.00†	18.340	179.809	2901.42	-145.43	-145.51	0.49	40°22'00.054"N	104°24'24.542"W	2.00	
3017.00†	20.340	179.809	2995.77	-178.52	-178.63	0.60	40°21'59.726"N	104°24'24.541"W	2.00	
3117.00†	22.340	179.809	3088.91	-214.89	-215.02	0.72	40°21'59.367"N	104°24'24.539"W	2.00	
3217.00†	24.340	179.809	3180.72	-254.48	-254.63	0.85	40°21'58.975"N	104°24'24.537"W	2.00	
3317.00†	26.340	179.809	3271.10	-297.25	-297.43	0.99	40°21'58.552"N	104°24'24.536"W	2.00	
3368.48	27.370	179.809	3317.02	-320.49	-320.68	1.07	40°21'58.323"N	104°24'24.535"W	2.00	End of Build
3417.00†	27.370	179.809	3360.11	-342.79	-342.99	1.15	40°21'58.102"N	104°24'24.534"W	0.00	
3517.00†	27.370	179.809	3448.92	-388.73	-388.96	1.30	40°21'57.648"N	104°24'24.532"W	0.00	
3617.00†	27.370	179.809	3537.73	-434.68	-434.94	1.45	40°21'57.194"N	104°24'24.530"W	0.00	
3717.00†	27.370	179.809	3626.53	-480.62	-480.91	1.61	40°21'56.739"N	104°24'24.528"W	0.00	
3817.00†	27.370	179.809	3715.34	-526.57	-526.88	1.76	40°21'56.285"N	104°24'24.526"W	0.00	
3917.00†	27.370	179.809	3804.14	-572.51	-572.85	1.91	40°21'55.831"N	104°24'24.524"W	0.00	
4017.00†	27.370	179.809	3892.95	-618.46	-618.83	2.07	40°21'55.377"N	104°24'24.522"W	0.00	
4117.00†	27.370	179.809	3981.76	-664.40	-664.80	2.22	40°21'54.922"N	104°24'24.520"W	0.00	
4217.00†	27.370	179.809	4070.56	-710.35	-710.77	2.37	40°21'54.468"N	104°24'24.518"W	0.00	
4317.00†	27.370	179.809	4159.37	-756.29	-756.74	2.53	40°21'54.014"N	104°24'24.516"W	0.00	
4417.00†	27.370	179.809	4248.17	-802.24	-802.72	2.68	40°21'53.559"N	104°24'24.514"W	0.00	
4517.00†	27.370	179.809	4336.98	-848.18	-848.69	2.83	40°21'53.105"N	104°24'24.512"W	0.00	
4617.00†	27.370	179.809	4425.79	-894.13	-894.66	2.99	40°21'52.651"N	104°24'24.510"W	0.00	
4717.00†	27.370	179.809	4514.59	-940.07	-940.63	3.14	40°21'52.197"N	104°24'24.508"W	0.00	
4817.00†	27.370	179.809	4603.40	-986.02	-986.61	3.29	40°21'51.742"N	104°24'24.506"W	0.00	
4917.00†	27.370	179.809	4692.20	-1031.96	-1032.58	3.45	40°21'51.288"N	104°24'24.504"W	0.00	
5017.00†	27.370	179.809	4781.01	-1077.91	-1078.55	3.60	40°21'50.834"N	104°24'24.502"W	0.00	
5117.00†	27.370	179.809	4869.82	-1123.85	-1124.52	3.75	40°21'50.379"N	104°24'24.500"W	0.00	
5217.00†	27.370	179.809	4958.62	-1169.80	-1170.50	3.91	40°21'49.925"N	104°24'24.498"W	0.00	
5317.00†	27.370	179.809	5047.43	-1215.74	-1216.47	4.06	40°21'49.471"N	104°24'24.496"W	0.00	
5417.00†	27.370	179.809	5136.23	-1261.69	-1262.44	4.22	40°21'49.017"N	104°24'24.494"W	0.00	
5517.00†	27.370	179.809	5225.04	-1307.63	-1308.41	4.37	40°21'48.562"N	104°24'24.492"W	0.00	
5617.00†	27.370	179.809	5313.85	-1353.58	-1354.39	4.52	40°21'48.108"N	104°24'24.490"W	0.00	



# Planned Wellpath Report

STATE NORTH PLATTE J24-F21-26HNC (REV-A.0) PWP

Page 4 of 7



REFERENCE WELLPATH IDENTIFICATION			
Operator	BONANZA CREEK OIL COMPANY	Slot	SLOT#23 STATE NORTH PLATTE J24-F21-26HNC (WELL 5, STATE NORTH PLATTE I-26 PAD)
Area	COLORADO	Well	STATE NORTH PLATTE J24-F21-26HNC
Field	WELD COUNTY	Wellbore	STATE NORTH PLATTE J24-F21-26HNC PWB
Facility	SEC.26-T5N-R63W		

WELLPATH DATA (120 stations) † = interpolated/extrapolated station										
MD [ft]	Inclination [°]	Azimuth [°]	TVD [ft]	Vert Sect [ft]	North [ft]	East [ft]	Latitude	Longitude	DLS [°/100ft]	Comments
5717.00†	27.370	179.809	5402.65	-1399.52	-1400.36	4.68	40°21'47.654"N	104°24'24.488"W	0.00	
5817.00†	27.370	179.809	5491.46	-1445.47	-1446.33	4.83	40°21'47.199"N	104°24'24.486"W	0.00	
5872.51	27.370	179.809	5540.76	-1470.97	-1471.85	4.91	40°21'46.947"N	104°24'24.485"W	0.00	End of Tangent
5917.00†	22.922	179.526	5581.02	-1489.86	-1490.75	5.02	40°21'46.760"N	104°24'24.484"W	10.00	
6017.00†	12.930	178.225	5676.04	-1520.56	-1521.48	5.53	40°21'46.457"N	104°24'24.477"W	10.00	
6117.00†	2.986	168.451	5774.96	-1534.30	-1535.25	6.40	40°21'46.321"N	104°24'24.466"W	10.00	
6217.00†	7.116	6.307	5874.76	-1530.65	-1531.64	7.60	40°21'46.356"N	104°24'24.450"W	10.00	
6317.00†	17.099	3.193	5972.41	-1509.72	-1510.75	9.11	40°21'46.563"N	104°24'24.431"W	10.00	
6417.00†	27.094	2.346	6064.95	-1472.16	-1473.22	10.86	40°21'46.934"N	104°24'24.408"W	10.00	
6517.00†	37.091	1.933	6149.56	-1419.10	-1420.20	12.82	40°21'47.458"N	104°24'24.383"W	10.00	
6617.00†	47.090	1.677	6223.68	-1352.15	-1353.29	14.91	40°21'48.119"N	104°24'24.356"W	10.00	
6717.00†	57.089	1.492	6285.04	-1273.36	-1274.52	17.08	40°21'48.897"N	104°24'24.328"W	10.00	
6817.00†	67.088	1.346	6331.79	-1185.10	-1186.29	19.26	40°21'49.769"N	104°24'24.300"W	10.00	
6917.00†	77.087	1.220	6362.51	-1090.08	-1091.28	21.39	40°21'50.708"N	104°24'24.272"W	10.00	
7017.00†	87.087	1.103	6376.26	-991.16	-992.38	23.39	40°21'51.685"N	104°24'24.246"W	10.00	
7046.13	90.000	1.070	6377.00†	-962.04	-963.26	23.94	40°21'51.973"N	104°24'24.239"W	10.00	End of 3D Arc (J)
7117.00†	90.000	1.070	6377.00	-891.18	-892.41	25.27	40°21'52.673"N	104°24'24.222"W	0.00	
7217.00†	90.000	1.070	6377.00	-791.19	-792.43	27.13	40°21'53.661"N	104°24'24.198"W	0.00	
7317.00†	90.000	1.070	6377.00	-691.20	-692.44	29.00	40°21'54.649"N	104°24'24.174"W	0.00	
7417.00†	90.000	1.070	6377.00	-591.20	-592.46	30.87	40°21'55.637"N	104°24'24.150"W	0.00	
7517.00†	90.000	1.070	6377.00	-491.21	-492.48	32.74	40°21'56.625"N	104°24'24.125"W	0.00	
7617.00†	90.000	1.070	6377.00	-391.22	-392.50	34.60	40°21'57.613"N	104°24'24.101"W	0.00	
7717.00†	90.000	1.070	6377.00	-291.23	-292.51	36.47	40°21'58.601"N	104°24'24.077"W	0.00	
7817.00†	90.000	1.070	6377.00	-191.24	-192.53	38.34	40°21'59.589"N	104°24'24.053"W	0.00	
7917.00†	90.000	1.070	6377.00	-91.24	-92.55	40.20	40°22'00.577"N	104°24'24.029"W	0.00	
8017.00†	90.000	1.070	6377.00	8.75	7.43	42.07	40°22'01.565"N	104°24'24.005"W	0.00	
8117.00†	90.000	1.070	6377.00	108.74	107.42	43.94	40°22'02.553"N	104°24'23.981"W	0.00	
8217.00†	90.000	1.070	6377.00	208.73	207.40	45.81	40°22'03.541"N	104°24'23.957"W	0.00	
8317.00†	90.000	1.070	6377.00	308.72	307.38	47.67	40°22'04.529"N	104°24'23.932"W	0.00	
8417.00†	90.000	1.070	6377.00	408.72	407.36	49.54	40°22'05.517"N	104°24'23.908"W	0.00	





# Planned Wellpath Report

STATE NORTH PLATTE J24-F21-26HNC (REV-A.0) PWP

Page 5 of 7



REFERENCE WELLPATH IDENTIFICATION			
Operator	BONANZA CREEK OIL COMPANY	Slot	SLOT#23 STATE NORTH PLATTE J24-F21-26HNC (WELL 5, STATE NORTH PLATTE I-26 PAD)
Area	COLORADO	Well	STATE NORTH PLATTE J24-F21-26HNC
Field	WELD COUNTY	Wellbore	STATE NORTH PLATTE J24-F21-26HNC PWB
Facility	SEC.26-T5N-R63W		

WELLPATH DATA (120 stations) † = interpolated/extrapolated station										
MD [ft]	Inclination [°]	Azimuth [°]	TVD [ft]	Vert Sect [ft]	North [ft]	East [ft]	Latitude	Longitude	DLS [°/100ft]	Comments
8517.00†	90.000	1.070	6377.00	508.71	507.35	51.41	40°22'06.505"N	104°24'23.884"W	0.00	
8617.00†	90.000	1.070	6377.00	608.70	607.33	53.28	40°22'07.493"N	104°24'23.860"W	0.00	
8717.00†	90.000	1.070	6377.00	708.69	707.31	55.14	40°22'08.481"N	104°24'23.836"W	0.00	
8817.00†	90.000	1.070	6377.00	808.68	807.29	57.01	40°22'09.469"N	104°24'23.812"W	0.00	
8917.00†	90.000	1.070	6377.00	908.68	907.28	58.88	40°22'10.457"N	104°24'23.788"W	0.00	
9017.00†	90.000	1.070	6377.00	1008.67	1007.26	60.75	40°22'11.445"N	104°24'23.764"W	0.00	
9117.00†	90.000	1.070	6377.00	1108.66	1107.24	62.61	40°22'12.433"N	104°24'23.739"W	0.00	
9217.00†	90.000	1.070	6377.00	1208.65	1207.22	64.48	40°22'13.421"N	104°24'23.715"W	0.00	
9317.00†	90.000	1.070	6377.00	1308.64	1307.21	66.35	40°22'14.409"N	104°24'23.691"W	0.00	
9417.00†	90.000	1.070	6377.00	1408.64	1407.19	68.21	40°22'15.397"N	104°24'23.667"W	0.00	
9517.00†	90.000	1.070	6377.00	1508.63	1507.17	70.08	40°22'16.385"N	104°24'23.643"W	0.00	
9617.00†	90.000	1.070	6377.00	1608.62	1607.15	71.95	40°22'17.373"N	104°24'23.619"W	0.00	
9717.00†	90.000	1.070	6377.00	1708.61	1707.14	73.82	40°22'18.361"N	104°24'23.595"W	0.00	
9817.00†	90.000	1.070	6377.00	1808.60	1807.12	75.68	40°22'19.349"N	104°24'23.571"W	0.00	
9917.00†	90.000	1.070	6377.00	1908.60	1907.10	77.55	40°22'20.337"N	104°24'23.546"W	0.00	
10017.00†	90.000	1.070	6377.00	2008.59	2007.08	79.42	40°22'21.325"N	104°24'23.522"W	0.00	
10117.00†	90.000	1.070	6377.00	2108.58	2107.07	81.29	40°22'22.313"N	104°24'23.498"W	0.00	
10217.00†	90.000	1.070	6377.00	2208.57	2207.05	83.15	40°22'23.301"N	104°24'23.474"W	0.00	
10317.00†	90.000	1.070	6377.00	2308.56	2307.03	85.02	40°22'24.289"N	104°24'23.450"W	0.00	
10417.00†	90.000	1.070	6377.00	2408.56	2407.01	86.89	40°22'25.277"N	104°24'23.426"W	0.00	
10517.00†	90.000	1.070	6377.00	2508.55	2507.00	88.75	40°22'26.265"N	104°24'23.402"W	0.00	
10617.00†	90.000	1.070	6377.00	2608.54	2606.98	90.62	40°22'27.253"N	104°24'23.378"W	0.00	
10717.00†	90.000	1.070	6377.00	2708.53	2706.96	92.49	40°22'28.241"N	104°24'23.353"W	0.00	
10817.00†	90.000	1.070	6377.00	2808.52	2806.94	94.36	40°22'29.229"N	104°24'23.329"W	0.00	
10917.00†	90.000	1.070	6377.00	2908.52	2906.93	96.22	40°22'30.217"N	104°24'23.305"W	0.00	
11017.00†	90.000	1.070	6377.00	3008.51	3006.91	98.09	40°22'31.205"N	104°24'23.281"W	0.00	
11117.00†	90.000	1.070	6377.00	3108.50	3106.89	99.96	40°22'32.193"N	104°24'23.257"W	0.00	
11217.00†	90.000	1.070	6377.00	3208.49	3206.88	101.83	40°22'33.181"N	104°24'23.233"W	0.00	
11317.00†	90.000	1.070	6377.00	3308.48	3306.86	103.69	40°22'34.169"N	104°24'23.209"W	0.00	
11318.30	90.000	1.070	6377.00 <sup>2</sup>	3309.78	3308.16	103.72	40°22'34.182"N	104°24'23.208"W	0.00	End of Tangent (J)

HOLE & CASING SECTIONS									
- Ref Wellbore: STATE NORTH PLATTE J24-F21-26HNC PWB					Ref Wellpath: STATE NORTH PLATTE J24-F21-26HNC (REV-A.0) PWP				
String/Diameter	Start MD [ft]	End MD [ft]	Interval [ft]	Start TVD [ft]	End TVD [ft]	Start N/S [ft]	Start E/W [ft]	End N/S [ft]	End E/W [ft]
9.625in Casing Surface	17.00	1550.00	1533.00	17.00	1550.00	0.00	0.00	0.00	0.00

TARGETS									
Name	MD [ft]	TVD [ft]	North [ft]	East [ft]	Grid East [US ft]	Grid North [US ft]	Latitude	Longitude	Shape
SEC.26-T05N-R63W		-14.00	3296.06	-486.22	3304075.56	1381735.41	40°22'34.062"N	104°24'30.831"W	polygon
SEC.02-T4N-R63W		0.00	25.14	-76.07	3304525.98	1378469.93	40°22'01.740"N	104°24'25.531"W	polygon
SEC.35-T5N-R63W		0.00	25.14	-76.07	3304525.98	1378469.93	40°22'01.740"N	104°24'25.531"W	polygon
NORTH PLATTE 21-35-2MRLNB BHL (50'FNL & 2395'FWL,SEC.2,REV-1)		6302.00	-6666.54	747.33	3305431.77	1371789.20	40°20'55.615"N	104°24'14.896"W	point
NORTH PLATTE 21-35-2MRLNB LP (400'FNL & 1944'FWL,SEC.35,REV-1)		6302.00	-1833.26	310.94	3304935.86	1376616.52	40°21'43.376"N	104°24'20.532"W	point
2) STATE NORTH PLATTE J24-F21-26HNC BHL (470'FNL & 1657'FWL,SEC.26,REV-1)	11318.30	6377.00	3308.16	103.72	3304665.28	1381754.77	40°22'34.182"N	104°24'23.208"W	point
1) STATE NORTH PLATTE J24-F21-26HNC LP (470'FSL & 1657'FWL,SEC.26,REV-1)	7046.13	6377.00	-963.26	23.94	3304638.17	1377482.88	40°21'51.973"N	104°24'24.239"W	point
SEC.02-T4N-R63W 460'SETBACK		6544.00	25.14	-76.07	3304525.98	1378469.93	40°22'01.740"N	104°24'25.531"W	polygon
SEC.26-T05N-R63W 460' SETBACK		6544.00	3296.06	-486.22	3304075.56	1381735.41	40°22'34.062"N	104°24'30.831"W	polygon
SEC.35-T5N-R63W 460'SETBACK		6544.00	25.14	-76.07	3304525.98	1378469.93	40°22'01.740"N	104°24'25.531"W	polygon



# Planned Wellpath Report

STATE NORTH PLATTE J24-F21-26HNC (REV-A.0) PWP

Page 6 of 7



REFERENCE WELLPATH IDENTIFICATION			
Operator	BONANZA CREEK OIL COMPANY	Slot	SLOT#23 STATE NORTH PLATTE J24-F21-26HNC (WELL 5, STATE NORTH PLATTE I-26 PAD)
Area	COLORADO	Well	STATE NORTH PLATTE J24-F21-26HNC
Field	WELD COUNTY	Wellbore	STATE NORTH PLATTE J24-F21-26HNC PWB
Facility	SEC.26-T5N-R63W		

SURVEY PROGRAM -				
Ref Wellbore: STATE NORTH PLATTE J24-F21-26HNC PWB      Ref Wellpath: STATE NORTH PLATTE J24-F21-26HNC (REV-A.0) PWP				
Start MD [ft]	End MD [ft]	Positional Uncertainty Model	Log Name/Comment	Wellbore
17.00	1550.00	BHI NaviTrak (Rotating+Axial Corr)		STATE NORTH PLATTE J24-F21-26HNC PWB
1550.00	11318.30	BHI AutoTrak Curve (Axial Corr, Short spacing)		STATE NORTH PLATTE J24-F21-26HNC PWB





# Planned Wellpath Report

STATE NORTH PLATTE J24-F21-26HNC (REV-A.0) PWP

Page 7 of 7



REFERENCE WELLPATH IDENTIFICATION			
Operator	BONANZA CREEK OIL COMPANY	Slot	SLOT#23 STATE NORTH PLATTE J24-F21-26HNC (WELL 5, STATE NORTH PLATTE I-26 PAD)
Area	COLORADO	Well	STATE NORTH PLATTE J24-F21-26HNC
Field	WELD COUNTY	Wellbore	STATE NORTH PLATTE J24-F21-26HNC PWB
Facility	SEC.26-T5N-R63W		

DESIGN COMMENTS				
MD [ft]	Inclination [°]	Azimuth [°]	TVD [ft]	Comment
17.00	0.000	179.809	17.00	Tie On
2000.00	0.000	179.809	2000.00	End of Tangent
3368.48	27.370	179.809	3317.02	End of Build
5872.51	27.370	179.809	5540.76	End of Tangent
7046.13	90.000	1.070	6377.00	End of 3D Arc (J)
11318.30	90.000	1.070	6377.00	End of Tangent (J)