



410 17th Street, Suite 1400
Denver, CO 80202
(720) 440-6100 phone
(720) 305-0804 fax

Bonanzacrk.com

December 12, 2017

State of Colorado
Oil and Gas Conservation Commission
1120 Lincoln Street, Suite 801
Denver, CO 80203

RE: Proposed Wellbore Spacing Unit
State North Platte U41-35-1XRLNB
Niobrara New Drill
SWSE Section 26, Township 5N, Range 63W, 6th PM
Weld County, Colorado

Dear Director Lepore,

Bonanza Creek Energy Operating Company, LLC. ("Bonanza Creek") is planning to drill the above captioned well in accordance with the provisions of Colorado Oil and Gas Conservation Commission (COGCC) Rule 318A.e.

Bonanza Creek's proposed wellbore spacing unit consists of:

Township 5N, Range 63W (Weld County):
Section 35: E2E2
Section 36: W2W2

Township 4N, Range 63W (Weld County):
Section 1: W2W2
Section 2: E2E2

Total acres: 651ac

The 30 day notification time period has passed and we have not yet received any objections to such well locations or proposed spacing unit, therefore Bonanza Creek hereby requests the Director to approve the above mentioned well. Bonanza Creek respectfully requests the COGCC review the enclosed map illustrating the proposed wellbore spacing unit.

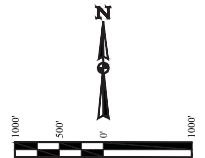
Regards,
Bonanza Creek Energy Operating Company, LLC.

Brian Dodek, P.G.
Manager – Environmental & Regulatory Compliance

LEGEND:

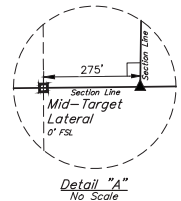
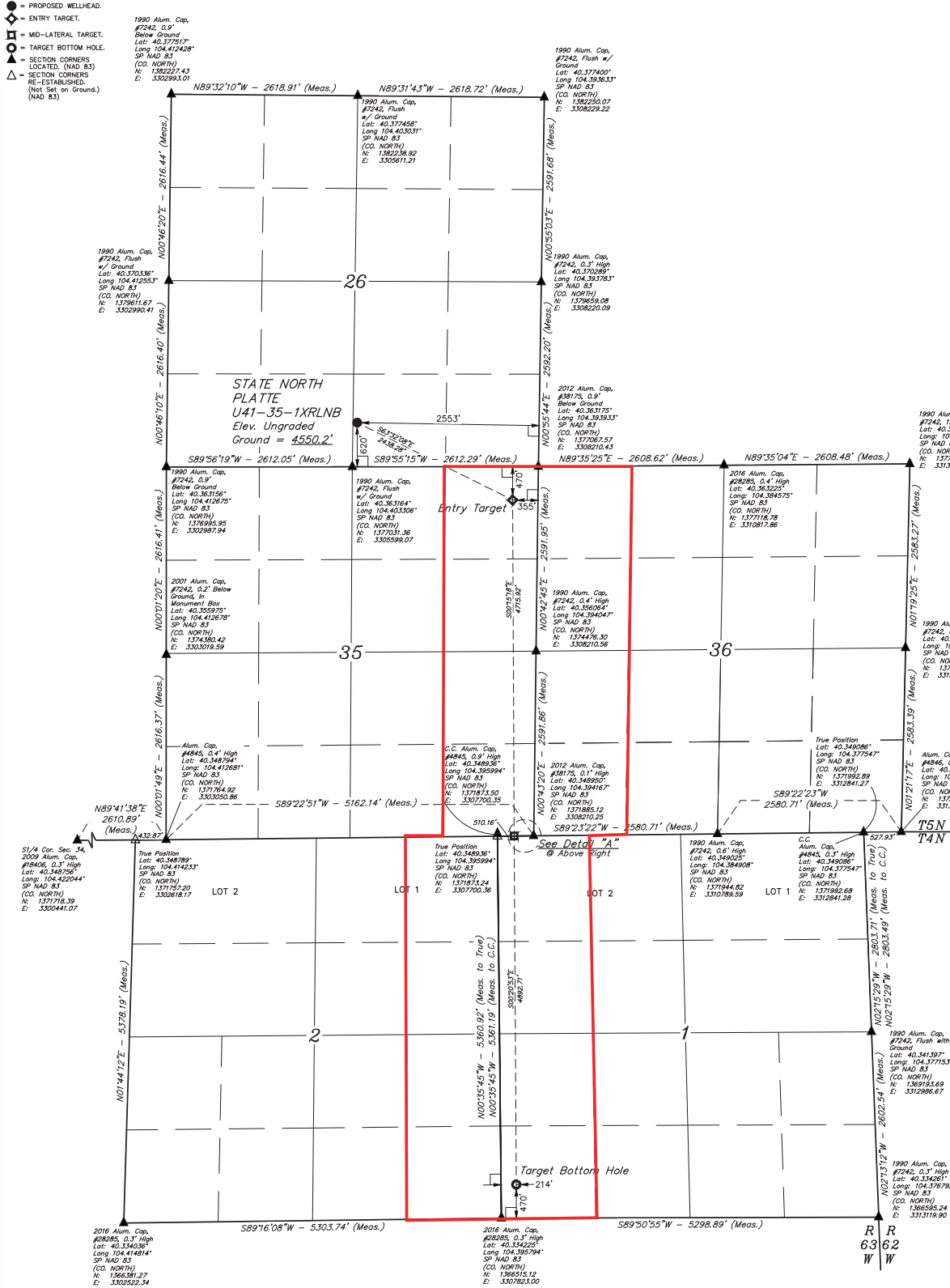
- 90° SYMBOL
- PROPOSED WELLHEAD
- ENTRY TARGET
- MID-LATERAL TARGET
- TARGET BOTTOM HOLE
- SECTION CORNERS LOCATED (NAD 83)
- SECTION CORNERS RE-ESTABLISHED (Not Set on Ground) (NAD 83)

T5N, R63W, 6th P.M.



BASIS OF BEARINGS

USGS COOPERATIVE BASIC NETWORK CONTROL STATION DESIGNATION M44-NGS DATA SHEET LISTS THE NAVD 88 ELEVATION AS BEING 4606.58 FEET



THIS IS TO CERTIFY THAT THE ABOVE IS A TRUE AND CORRECT COPY OF THE ORIGINAL SURVEY RECORD AND THAT THE SAME ARE TRUE AND CORRECT TO THE BEST OF MY KNOWLEDGE AND BELIEF.

RECEIVED LAND SURVEYOR
RECEIVED LAND SURVEYOR
RECEIVED LAND SURVEYOR
RECEIVED LAND SURVEYOR

REV: 1 11-14-17 K.B. (NAME, ET, ML & TBH CHANGE)

BONANZA CREEK ENERGY OPERATING COMPANY, LLC
STATE NORTH PLATTE U41-35-1XRLNB
SW 1/4 SE 1/4, SECTION 26, T5N, R63W, 6th P.M.
WELD COUNTY, COLORADO

U.S. LAND SURVEYING
Corporate Office • 85 South 200 East
Vernal, UT 84078 • (435) 789-1017

U.S. LAND SURVEYING
Corporate Office • 85 South 200 East
Vernal, UT 84078 • (435) 789-1017

PDOP = 1.4

NAD 83 (SURFACE LOCATION)	NAD 83 (ENTRY TARGET)	NAD 83 (MID-LATERAL TARGET)	NAD 83 (TARGET BOTTOM HOLE)
LATITUDE = 40°21'53.52" (40.364867)	LATITUDE = 40°21'42.78" (40.361884)	LATITUDE = 40°20'56.19" (40.348942)	LATITUDE = 40°20'07.86" (40.335515)
LONGITUDE = 104°24'11.01" (104.403058)	LONGITUDE = 104°23'42.82" (104.395228)	LONGITUDE = 104°23'42.55" (104.395152)	LONGITUDE = 104°23'42.16" (104.395045)
STATE PLANE NAD 83 (CO. NORTH)	STATE PLANE NAD 83 (CO. NORTH)	STATE PLANE NAD 83 (CO. NORTH)	STATE PLANE NAD 83 (CO. NORTH)
N: 1377651.72 E: 330659.95	N: 1376592.73 E: 3307855.55	N: 1371878.71 E: 3307935.40	N: 1366988.12 E: 3308026.18