



410 17th Street, Suite 1400  
Denver, CO 80202  
(720) 440-6100 phone  
(720) 305-0804 fax

[Bonanzacrk.com](http://Bonanzacrk.com)

December 12, 2017

State of Colorado  
Oil and Gas Conservation Commission  
1120 Lincoln Street, Suite 801  
Denver, CO 80203

**RE: Proposed Wellbore Spacing Unit**  
North Platte 31-35-2MRLNC  
Niobrara New Drill  
SWSE Section 26, Township 5N, Range 63W, 6<sup>th</sup> PM  
Weld County, Colorado

Dear Director Lepore,

Bonanza Creek Energy Operating Company, LLC. ("Bonanza Creek") is planning to drill the above captioned well in accordance with the provisions of Colorado Oil and Gas Conservation Commission (COGCC) Rule 318A.e.

Bonanza Creek's proposed wellbore spacing unit consists of:

Township 5N, Range 63W (Weld County):  
Section 35: W2NE, SE

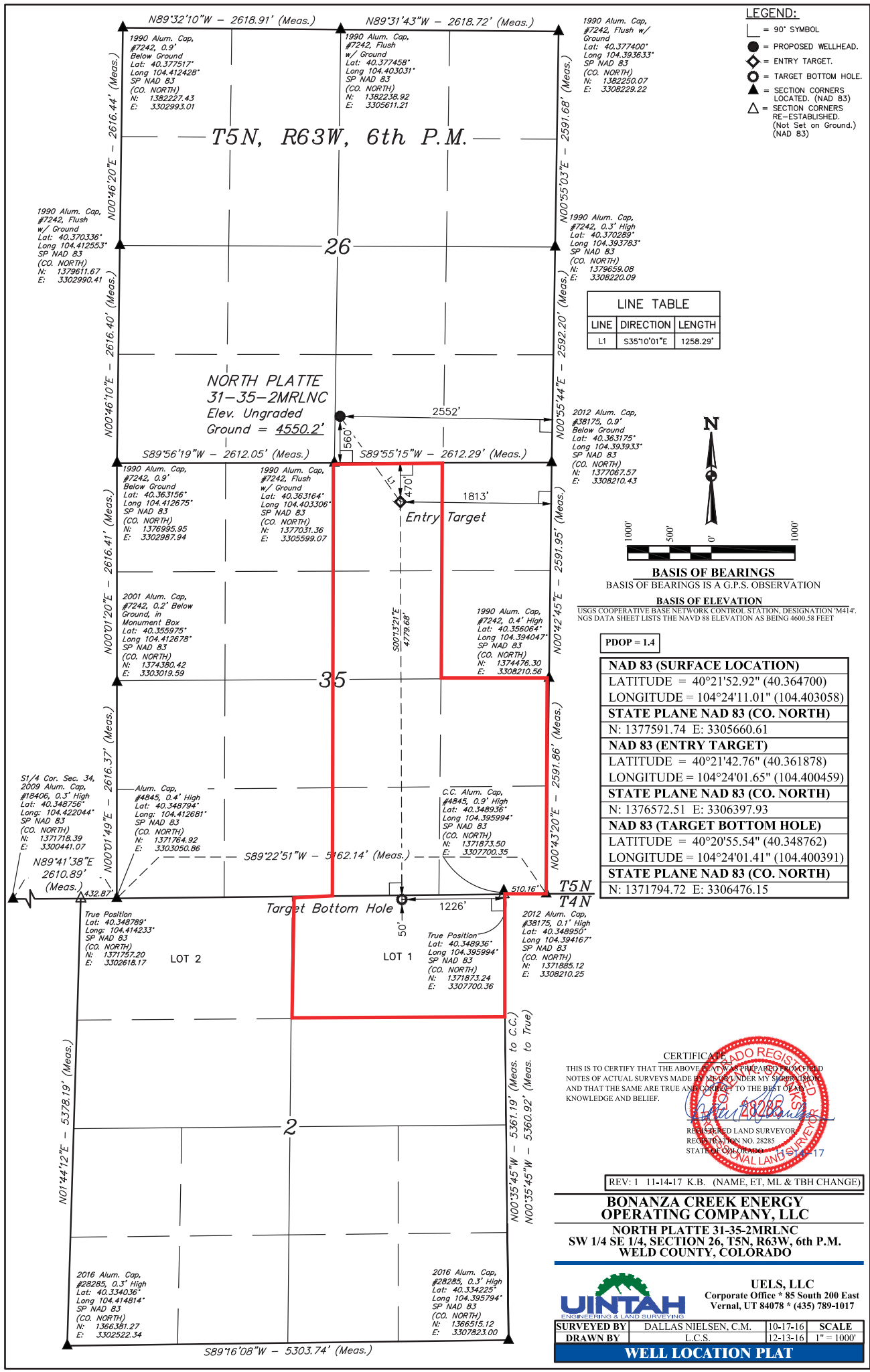
Township 4N, Range 63W (Weld County):  
Section 2: Lot 1

Total acres: 331ac

The 30 day notification time period has passed and we have not yet received any objections to such well locations or proposed spacing unit, therefore Bonanza Creek hereby requests the Director to approve the above mentioned well. Bonanza Creek respectfully requests the COGCC review the enclosed map illustrating the proposed wellbore spacing unit.

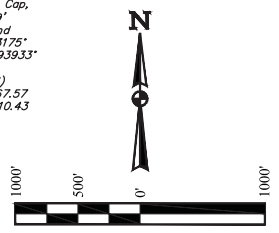
Regards,  
Bonanza Creek Energy Operating Company, LLC.

Brian Dodek, P.G.  
Manager – Environmental & Regulatory Compliance



- LEGEND:**
- 90° SYMBOL
  - PROPOSED WELLHEAD.
  - ENTRY TARGET.
  - TARGET BOTTOM HOLE.
  - SECTION CORNERS LOCATED. (NAD 83)
  - SECTION CORNERS RE-ESTABLISHED. (Not Set on Ground.) (NAD 83)

LINE TABLE		
LINE	DIRECTION	LENGTH
L1	S35°10'01"E	1258.29'



**BASIS OF BEARINGS**  
BASIS OF BEARINGS IS A G.P.S. OBSERVATION

**BASIS OF ELEVATION**  
USGS COOPERATIVE BASE NETWORK CONTROL STATION, DESIGNATION "M4T4";  
NGS DATA SHEET LISTS THE NAVD 88 ELEVATION AS BEING 4600.58 FEET

PDOP = 1.4

NAD 83 (SURFACE LOCATION)	
LATITUDE = 40°21'52.92" (40.364700)	
LONGITUDE = 104°24'11.01" (104.403058)	
STATE PLANE NAD 83 (CO. NORTH)	
N: 1377591.74 E: 3305660.61	
NAD 83 (ENTRY TARGET)	
LATITUDE = 40°21'42.76" (40.361878)	
LONGITUDE = 104°24'01.65" (104.400459)	
STATE PLANE NAD 83 (CO. NORTH)	
N: 1376572.51 E: 3306397.93	
NAD 83 (TARGET BOTTOM HOLE)	
LATITUDE = 40°20'55.54" (40.348762)	
LONGITUDE = 104°24'01.41" (104.400391)	
STATE PLANE NAD 83 (CO. NORTH)	
N: 1371794.72 E: 3306476.15	

THIS IS TO CERTIFY THAT THE ABOVE PLAT WAS PREPARED FROM FIELD NOTES OF ACTUAL SURVEYS MADE BY ME OR UNDER MY SUPERVISION AND THAT THE SAME ARE TRUE AND CORRECT TO THE BEST OF MY KNOWLEDGE AND BELIEF.



REV: 1 11-14-17 K.B. (NAME, ET, ML & TBH CHANGE)

**BONANZA CREEK ENERGY  
OPERATING COMPANY, LLC**  
NORTH PLATTE 31-35-2MRLNC  
SW 1/4 SE 1/4, SECTION 26, T5N, R63W, 6th P.M.  
WELD COUNTY, COLORADO



**UELS, LLC**  
Corporate Office \* 85 South 200 East  
Vernal, UT 84078 \* (435) 789-1017

SURVEYED BY	DALLAS NIELSEN, C.M.	10-17-16	SCALE
DRAWN BY	L.C.S.	12-13-16	1" = 1000'

**WELL LOCATION PLAT**