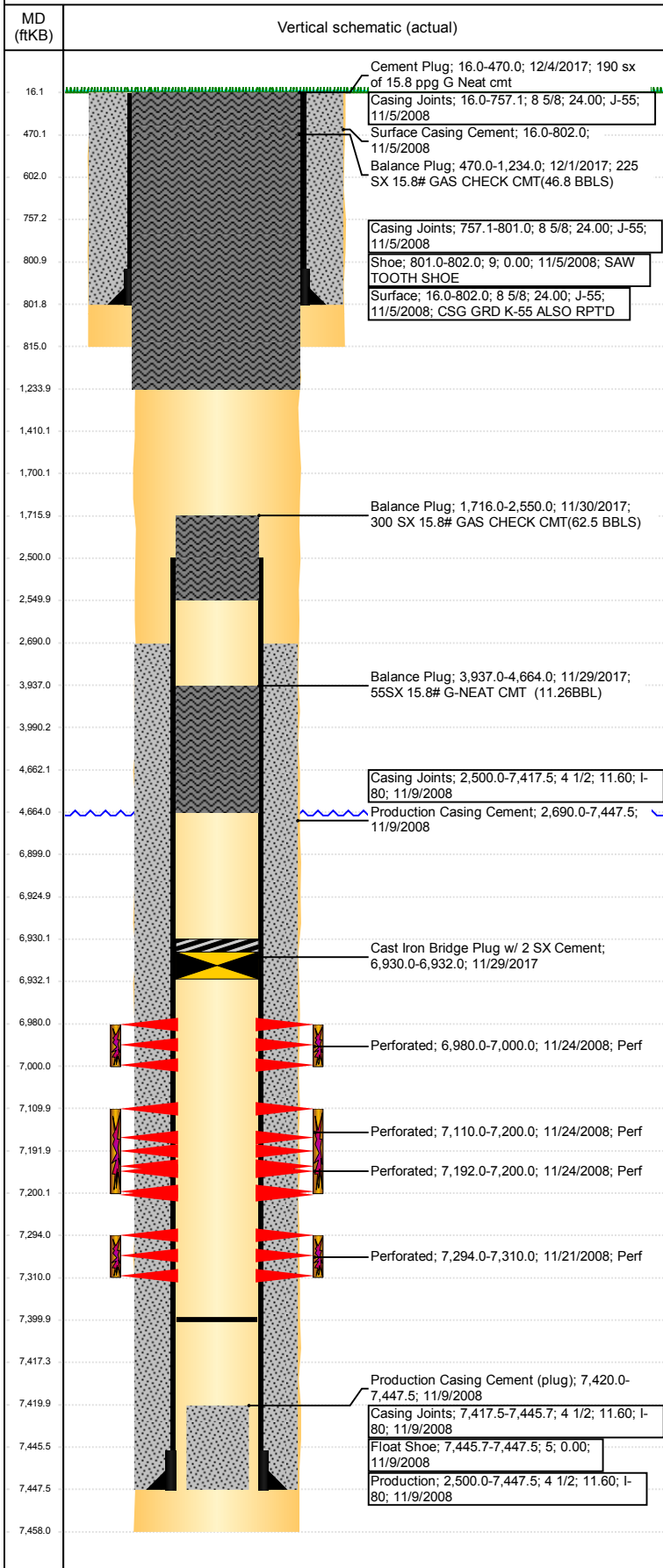


**Well Name: ISHIGURO 21-36**

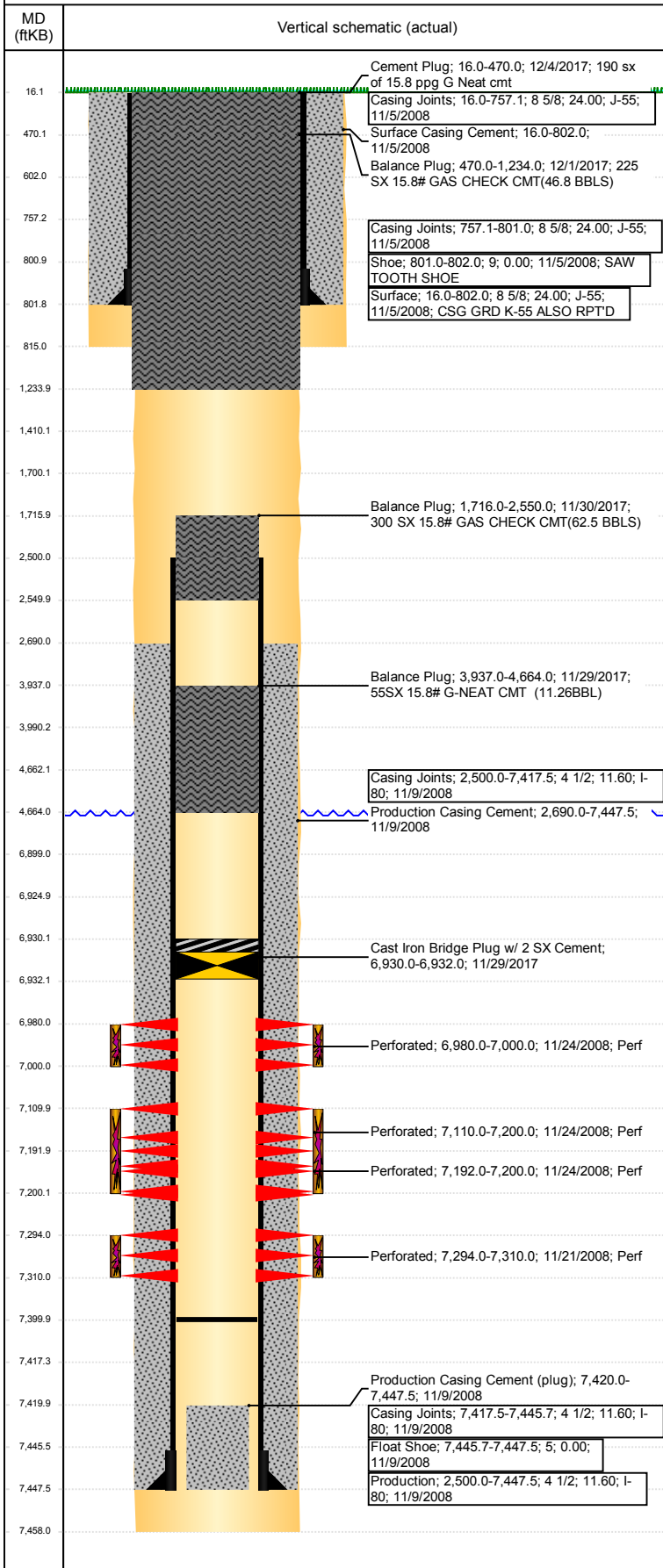
DEVIATED - ORIGINAL HOLE, 12/21/2017 4:52:47 PM



| Well Header   |                               |                         |                        |                                    |                         |                                |  |
|---|-------------------------------|-------------------------|------------------------|------------------------------------|-------------------------|--------------------------------|--|
| API<br>05-123-28121   | Business Unit<br>DJ BASIN     |                         | District<br>15         | Well Config<br>DEVIATED            |                         |                                |  |
| Original KB Elevation (ft)<br>4,676                                 | KB - GL / MSL (ftKB)<br>16.00 |                         | Spud Date<br>11/4/2008 |                                    | P & A Date<br>12/4/2017 |                                |  |
| Comment   |                               |                         |                        |                                    |                         |                                |  |
| Directions To Well<br>49TH ST & 35TH AVE, EAST 3/4, SSW 1/4, E INTO |                               |                         |                        |                                    |                         |                                |  |
| Congressional Location  |                               |                         |                        |                                    |                         |                                |  |
| Quarter 3<br>NW   | Quarter 4<br>NE               | Section<br>36           | Township<br>5          | Twnshp N/S Dir<br>N                | Range<br>66             | Range E/W Dir<br>W             |  |
| Bottom Hole Location  |                               |                         |                        |                                    |                         |                                |  |
| North-South Distance (ft)<br>1,247.0                                |                               | From N or S Line<br>FNL |                        | East-West Distance (ft)<br>2,622.0 |                         | From E or W Line<br>FEL        |  |
| Plug Back Total Depths  |                               |                         |                        |                                    |                         |                                |  |
| Date  | Depth (ftKB)                  | Method                  |                        | Com                                |                         |                                |  |
| 11/9/2008   | 7,417.0                       | CASING TALLY            |                        | TOP OF LATCH DOWN BAFFLE           |                         |                                |  |
| 11/19/2008  | 7,420.0                       | CASED HOLE LOG          |                        | DEPTH LOGGER ON CBL                |                         |                                |  |
| 3/3/2009  | 7,400.0                       | TAG                     |                        | TAGGED FILL                        |                         |                                |  |
| Wellbore Sections   |                               |                         |                        |                                    |                         |                                |  |
| Section Des   |                               | Size (in)               |                        | Act Top, MD (ftKB)                 |                         | Act Btm, MD (ftKB)             |  |
| SURFACE   |                               | 12 1/4                  |                        | 16                                 |                         | 815                            |  |
| PRODUCTION  |                               | 7 7/8                   |                        | 815                                |                         | 7,458                          |  |
| Zone Statuses   |                               |                         |                        |                                    |                         |                                |  |
| Zone Name   | Status Date                   | Status                  | Fluid Type             | Job                                | Prod Method             |                                |  |
| NIOBRARA  | 1/6/2009                      | PR                      | Water                  | DRILLING/CO...                     | Flowing                 |                                |  |
| NIOBRARA  | 4/4/2014                      | PR                      |                        | Water                              | ABANDON WE...           | Flowing                        |  |
| NIOBRARA  | 1/19/2015                     | PR                      |                        |                                    | DRILLING/CO...          | Flowing                        |  |
| NIOBRARA  | 11/29/2017                    | P&A                     | Water                  |                                    | ABANDON WE...           | Flowing                        |  |
| CODELL  | 1/6/2009                      | PR                      |                        | DRILLING/CO...                     | Flowing                 |                                |  |
| CODELL  | 4/4/2014                      | PR                      |                        |                                    | Flowing                 |                                |  |
| CODELL  | 1/19/2015                     | PR                      |                        |                                    | Flowing                 |                                |  |
| CODELL  | 2/9/2017                      | SI                      |                        |                                    | Flowing                 |                                |  |
| CODELL  | 3/16/2017                     | PR                      |                        |                                    | Flowing                 |                                |  |
| CODELL  | 11/29/2017                    | P&A                     |                        | ABANDON WE...                      | Flowing                 |                                |  |
| Casing Strings  |                               |                         |                        |                                    |                         |                                |  |
| Surface, 802.0ftKB  |                               |                         |                        |                                    |                         |                                |  |
| Casing Description<br>Surface                                       | Run Date<br>11/5/2008         | OD (in)<br>8 5/8        | Wt/Len (l...<br>24.00  | Grade<br>J-55                      | Top, MD (ft...<br>16.0  | MD (ftKB)<br>802.0             |  |
| Production, 7,447.5ftKB   |                               |                         |                        |                                    |                         |                                |  |
| Casing Description<br>Production                                    | Run Date<br>11/9/2008         | OD (in)<br>4 1/2        | Wt/Len (l...<br>11.60  | Grade<br>I-80                      | Top, MD (ft...<br>16.0  | MD (ftKB)<br>7,447.5           |  |
| Cement  |                               |                         |                        |                                    |                         |                                |  |
| Description<br>Surface Casing Cement                                |                               |                         |                        | Top Depth (ftKB)<br>16.0           |                         | Bottom Depth (ftKB)<br>802.0   |  |
| Description<br>Production Casing Cement                             |                               |                         |                        | Top Depth (ftKB)<br>2,690.0        |                         | Bottom Depth (ftKB)<br>7,447.5 |  |
| Description<br>Dump Bail  |                               |                         |                        | Top Depth (ftKB)<br>6,899.0        |                         | Bottom Depth (ftKB)<br>6,925.0 |  |
| Description<br>Balance Plug   |                               |                         |                        | Top Depth (ftKB)<br>3,990.0        |                         | Bottom Depth (ftKB)<br>4,662.0 |  |
| Description<br>Cement Plug  |                               |                         |                        | Top Depth (ftKB)<br>2,500.0        |                         | Bottom Depth (ftKB)<br>2,550.0 |  |
| Description<br>Cement Plug  |                               |                         |                        | Top Depth (ftKB)<br>1,700.0        |                         | Bottom Depth (ftKB)<br>2,500.0 |  |
| Description<br>Cement Plug  |                               |                         |                        | Top Depth (ftKB)<br>802.0          |                         | Bottom Depth (ftKB)<br>1,234.0 |  |
| Description<br>Cement Plug  |                               |                         |                        | Top Depth (ftKB)<br>602.0          |                         | Bottom Depth (ftKB)<br>802.0   |  |
| Description<br>Cement Plug  |                               |                         |                        | Top Depth (ftKB)<br>16.0           |                         | Bottom Depth (ftKB)<br>602.0   |  |
| Description<br>Balance Plug   |                               |                         |                        | Top Depth (ftKB)<br>3,937.0        |                         | Bottom Depth (ftKB)<br>4,664.0 |  |
| Description<br>Balance Plug   |                               |                         |                        | Top Depth (ftKB)<br>1,716.0        |                         | Bottom Depth (ftKB)<br>2,550.0 |  |
| Description<br>Balance Plug   |                               |                         |                        | Top Depth (ftKB)<br>470.0          |                         | Bottom Depth (ftKB)<br>1,234.0 |  |
| Description<br>Cement Plug  |                               |                         |                        | Top Depth (ftKB)<br>16.0           |                         | Bottom Depth (ftKB)<br>470.0   |  |

**Well Name: ISHIGURO 21-36**

DEVIATED - ORIGINAL HOLE, 12/21/2017 4:52:48 PM



| Tubing Strings     |            |           |         |            |       |          |           |
|--------------------|------------|-----------|---------|------------|-------|----------|-----------|
| Tubing Description | Run Date   | String... | ID (in) | Wt (lb/ft) | Grade | Len (ft) | Set De... |
| FRAC PLUG          | 11/24/2008 | 4 1/2     |         |            |       | 1.00     |           |

| Tubing Components                               |         |            |       |     |          |            |                  |
|---|---------|------------|-------|-----|----------|------------|------------------|
| Item Des  | OD (in) | Wt (lb/ft) | Grade | Jts | Len (ft) | Btm (ftKB) | Btm (TVD) (ftKB) |
| Wellbore Equipment, Composite Flow Thru Plug, , | 4 1/2   |            |       | 1   | 1.00     | 7,261.0    |                  |

|                     |          |           |         |            |       |          |           |
|---------------------|----------|-----------|---------|------------|-------|----------|-----------|
| Tubing Description  | Run Date | String... | ID (in) | Wt (lb/ft) | Grade | Len (ft) | Set De... |
| Tubing - Production | 3/3/2009 | 2 3/8     | 2.00    | 4.70       | J-55  | 7,231.25 |           |

| Tubing Components |         |            |       |     |          |            |                  |
|-------------------|---------|------------|-------|-----|----------|------------|------------------|
| Item Des          | OD (in) | Wt (lb/ft) | Grade | Jts | Len (ft) | Btm (ftKB) | Btm (TVD) (ftKB) |
| EUE 8rd Tubing    | 2 3/8   | 4.70       | J-55  | 231 | 7,229.60 | 7,245.6    |                  |
| Seal Nipple       | 2 3/8   | 0.00       |       | 1   | 1.65     | 7,247.3    |                  |

| Other In Hole |                                      |         |            |            |
|---------------|--------------------------------------|---------|------------|------------|
| Run Date      | Des                                  | OD (in) | Top (ftKB) | Btm (ftKB) |
| 9/14/2017     | Cast Iron Bridge Plug                | 3.99    | 6,925.0    | 6,930.0    |
| 11/29/2017    | Cast Iron Bridge Plug w/ 2 SX Cement | 3.99    | 6,930.0    | 6,932.0    |

| Logs       |                     |                |                |
|------------|---------------------|----------------|----------------|
| Date       | Type                | Top, MD (ftKB) | Btm, MD (ftKB) |
| 11/8/2008  | COMPENSATED DENSITY | 800.0          | 7,458.0        |
| 11/8/2008  | GAMMA RAY           | 800.0          | 7,458.0        |
| 11/8/2008  | INDUCTION           | 800.0          | 7,458.0        |
| 11/19/2008 | CBL/CCL/GR          | 2,500.0        | 7,409.0        |
| 10/3/2017  | GYRO                | 0.0            | 7,150.0        |

| Perforation Data        |           |                           |            |            |            |
|-------------------------|-----------|---------------------------|------------|------------|------------|
| Linked Zone             | Bnch/St g | Sum of Entered Shot Total | Top (ftKB) | Btm (ftKB) | Date       |
| NIOBRARA, ORIGINAL HOLE | A         | 60                        | 6,980.00   | 7,000.00   | 11/24/2008 |
| NIOBRARA, ORIGINAL HOLE | B         | 42                        | 7,110.00   | 7,200.00   | 11/24/2008 |
| NIOBRARA, ORIGINAL HOLE | C         | 24                        | 7,192.00   | 7,200.00   | 11/24/2008 |
| CODELL, ORIGINAL HOLE   |           | 64                        | 7,294.00   | 7,310.00   | 11/21/2008 |
| Total (Sum)             |           | 190                       |            |            |            |

| Stimulation Intervals |                                |                  |
|-----------------------|--------------------------------|------------------|
| Start Date            | Primary Job Type               |                  |
| 11/24/2008            | DRILLING/COMPLETION - ORIGINAL |                  |
| Technical Result      | Tech Result Details            | Tech Result Note |

|                  |                                |                  |
|------------------|--------------------------------|------------------|
| Comment          |                                |                  |
| B & C BENCH FRAC |                                |                  |
| Start Date       | Primary Job Type               |                  |
| 11/24/2008       | DRILLING/COMPLETION - ORIGINAL |                  |
| Technical Result | Tech Result Details            | Tech Result Note |
| Comment          |                                |                  |

|                  |                                |                  |
|------------------|--------------------------------|------------------|
| Start Date       | Primary Job Type               |                  |
| 11/24/2008       | DRILLING/COMPLETION - ORIGINAL |                  |
| Technical Result | Tech Result Details            | Tech Result Note |
| Comment          |                                |                  |
| A BENCH FRAC     |                                |                  |