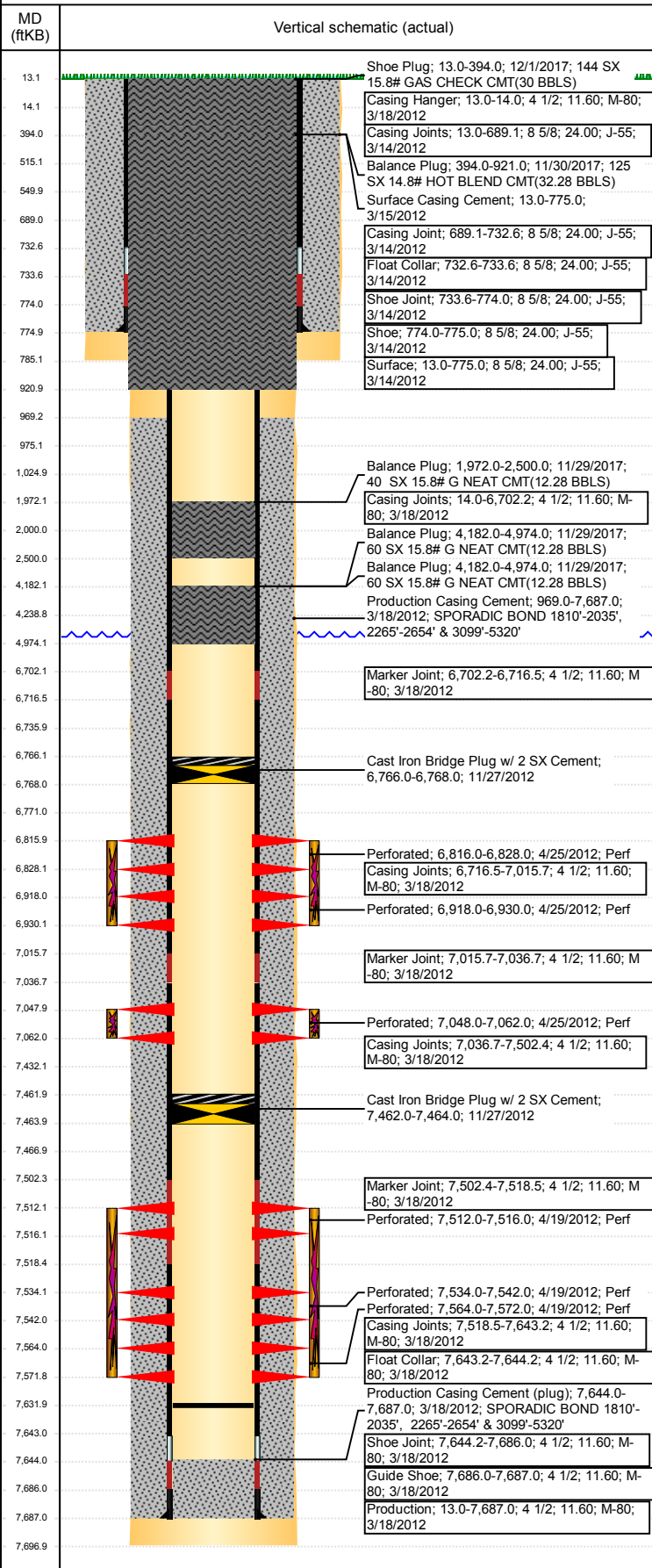


# Wellbore Schematic Input Report

**Well Name: KY BLUE D30-32**

VERTICAL - ORIGINAL HOLE, 12/21/2017 4:50:19 PM



## Well Header

API 05-123-34348	Business Unit DJ BASIN	District 15	Well Config VERTICAL
Original KB Elevation (ft) 4,807	KB - GL / MSL (ftKB) 13.00	Spud Date 3/14/2012	P & A Date 12/1/2017

## Comment

1/2 PUMP OFF SUB BIT /CONE BIT @ 7632.02' KB

## Directions To Well

FROM WCR 30 & 49, GO SOUTH 0.7 MILE, WEST 0.1 MILES, FOLLOW LEASE ROAD NORTHWEST 0.1 MILE INTO LOCATION

## Congressional Location

Quarter 3 NE	Quarter 4 SE	Section 25	Township 3	TwNS Dir N	Range 65	Range E/W Dir W
-----------------	-----------------	---------------	---------------	---------------	-------------	--------------------

## Bottom Hole Location

North-South Distance (ft)	From N or S Line	East-West Distance (ft)	From E or W Line
---------------------------	------------------	-------------------------	------------------

## Plug Back Total Depths

Date	Depth (ftKB)	Method	Com
3/18/2012	7,644.0	CASING TALLY	FLOAT COLLAR
4/4/2012	7,629.0	CASED HOLE LOG	DEPTH LOGGER
7/2/2012	7,632.0	TBG TALLY	7' IN 248JT USING N2/CONE BIT

## Wellbore Sections

Section Des	Size (in)	Act Top, MD (ftKB)	Act Btm, MD (ftKB)
SURFACE	12 1/4	13	785
PRODUCTION	7 7/8	785	7,697

## Zone Statuses

Zone Name	Status Date	Status	Fluid Type	Job	Prod Method
NIOBRARA	4/27/2012	PR	Water	DRILLING - OR...	Flowing
NIOBRARA	4/30/2012	PR		ABANDON WE...	
NIOBRARA	11/27/2012	P&A		ABANDON WE...	
CODELL	4/27/2012	PR	Water	DRILLING - OR...	Flowing
CODELL	4/30/2012	PR		ABANDON WE...	
CODELL	11/27/2012	P&A		ABANDON WE...	
CODELL	12/1/2017	P&A	Water	ABANDON WE...	Flowing
J SAND	4/27/2012	PR		DRILLING - OR...	
J SAND	4/30/2012	PR		ABANDON WE...	
J SAND	11/27/2012	P&A		ABANDON WE...	
J SAND	12/1/2017	P&A		ABANDON WE...	

## Casing Strings

### Surface, 775.0ftKB

Casing Description	Run Date	OD (in)	Wt/Len (l...)	Grade	Top, MD (ft...)	MD (ftKB)
Surface	3/14/2012	8 5/8	24.00	J-55	13.0	775.0

### Production, 7,687.0ftKB

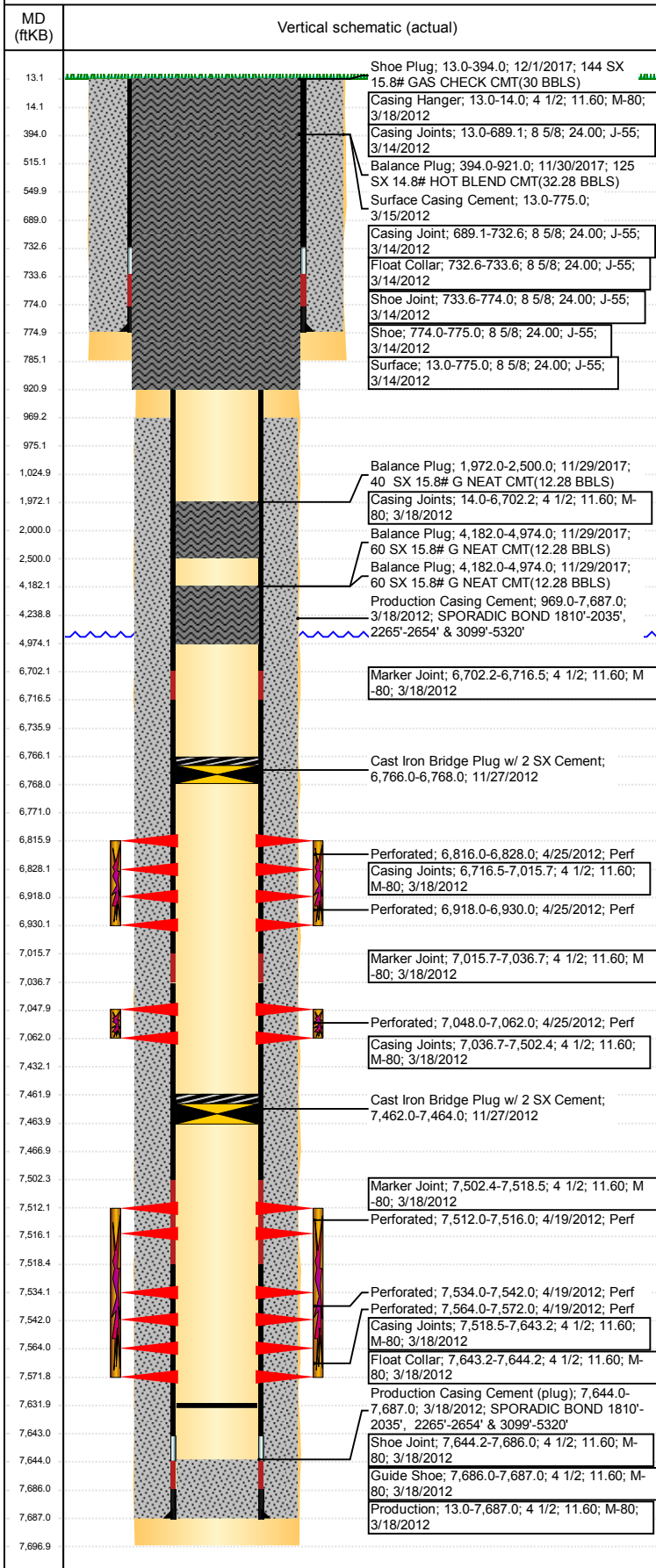
Casing Description	Run Date	OD (in)	Wt/Len (l...)	Grade	Top, MD (ft...)	MD (ftKB)
Production	3/18/2012	4 1/2	11.60	M-80	13.0	7,687.0

## Cement

Description	Top Depth (ftKB)	Bottom Depth (ftKB)
Surface Casing Cement	13.0	775.0
Description	Top Depth (ftKB)	Bottom Depth (ftKB)
Production Casing Cement	969.0	7,687.0
Description	Top Depth (ftKB)	Bottom Depth (ftKB)
Dump Bail	6,736.0	6,766.0
Description	Top Depth (ftKB)	Bottom Depth (ftKB)
Dump Bail	7,432.0	7,462.0
Description	Top Depth (ftKB)	Bottom Depth (ftKB)
Balance Plug	2,000.0	2,500.0
Description	Top Depth (ftKB)	Bottom Depth (ftKB)
Balance Plug	4,239.0	4,974.0
Description	Top Depth (ftKB)	Bottom Depth (ftKB)
Cement Plug	975.0	1,025.0
Description	Top Depth (ftKB)	Bottom Depth (ftKB)
	775.0	785.0
Description	Top Depth (ftKB)	Bottom Depth (ftKB)
Cement Plug	785.0	975.0
Description	Top Depth (ftKB)	Bottom Depth (ftKB)
Cement Plug	550.0	775.0
Description	Top Depth (ftKB)	Bottom Depth (ftKB)
Shoe Plug	13.0	550.0
Description	Top Depth (ftKB)	Bottom Depth (ftKB)
Balance Plug	4,182.0	4,974.0
Description	Top Depth (ftKB)	Bottom Depth (ftKB)
Balance Plug	1,972.0	2,500.0

**Well Name: KY BLUE D30-32**

VERTICAL - ORIGINAL HOLE, 12/21/2017 4:50:20 PM



Cement								
Description Balance Plug				Top Depth (ftKB) 4,182.0		Bottom Depth (ftKB) 4,974.0		
Description Balance Plug				Top Depth (ftKB) 394.0		Bottom Depth (ftKB) 921.0		
Description Shoe Plug				Top Depth (ftKB) 13.0		Bottom Depth (ftKB) 394.0		
Tubing Strings								
Tubing Description Tubing - Production		Run Date 7/2/2012	String... 2 3/8	ID (in) 2.00	Wt (lb/ft) 4.70	Grade J-55	Len (ft) 7,477.07	Set De... 7,486.3
Tubing Components								
Item Des	OD (in)	Wt (lb/ft)	Grade	Jts	Len (ft)	Btm (ftKB)	Btm (TVD) (ftKB)	
Pup Joint	2 3/8	4.70	J-55	1	10.00	21.0	7,484.4	
Tubing	2 3/8	4.70	J-55	242	7,462.17	7,483.2		
Pump Seating Nipple	2 3/8	1.10	N-80	1	3.00	7,486.2		
1/2 PUMP OFF SUB BIT	2 3/8	1.10	N-80	1	1.90	7,488.1		
Tubing Description Tubing - Fiberglass		Run Date 10/9/2017	String... 2 3/8	ID (in) 2.00	Wt (lb/ft)	Grade	Len (ft) 510.00	Set De... 7,486.3
Tubing Components								
Item Des	OD (in)	Wt (lb/ft)	Grade	Jts	Len (ft)	Btm (ftKB)	Btm (TVD) (ftKB)	
Fiberglass	2 3/8			17	510.00	1,025.0		
Other In Hole								
Run Date	Des				OD (in)	Top (ftKB)	Btm (ftKB)	
7/2/2012  11/27/2012 11/27/2012	Cast Iron Bridge Plug				4	6,766.0	6,771.0	
	Cast Iron Bridge Plug				4	7,462.0	7,467.0	
	Cast Iron Bridge Plug w/ 2 SX Cement				4	7,462.0	7,464.0	
	Cast Iron Bridge Plug w/ 2 SX Cement				4	6,766.0	6,768.0	
Logs								
Date	Type				Top, MD (ftKB)		Btm, MD (ftKB)	
3/17/2012	SPECTRAL DENSITY/Pe/DSN NEUTRON/SP/ARRAY COMPENSATED TRUE RESISTIVITY				775.0		7,696.0	
3/17/2012	SPECTRAL GAMMA RAY				775.0		7,696.0	
4/19/2012	CBL/CCL/GR				780.0		7,629.0	
12/10/2014	GYRO				13.0		7,400.0	
Perforation Data								
Linked Zone	Bnch/St g	Sum of Entered Shot Total	Top (ftKB)		Btm (ftKB)		Date	
NIOBRARA, ORIGINAL HOLE	B	24	6,816.00		6,828.00		4/25/2012	
NIOBRARA, ORIGINAL HOLE	C	24	6,918.00		6,930.00		4/25/2012	
CODELL, ORIGINAL HOLE		56	7,048.00		7,062.00		4/25/2012	
J SAND, ORIGINAL HOLE	01	16	7,512.00		7,516.00		4/19/2012	
J SAND, ORIGINAL HOLE	01	32	7,534.00		7,542.00		4/19/2012	
J SAND, ORIGINAL HOLE	01	32	7,564.00		7,572.00		4/19/2012	
Total (Sum)		184						
Stimulation Intervals								
Start Date 4/25/2012		Primary Job Type COMPLETION - ORIGINAL						
Technical Result Success		Tech Result Details According to Plan			Tech Result Note			
Comment (JSAND)- BREAK 2275 @2.6 BBL, ISIP 1583, 5 MIN 1396, 10 MIN 1324, 15 MIN 1282, POST JOB ISIP 2421, 5 MIN 2273.  AVG PRESS 2578, AVG RATE 35.3, MAX PRESS 3862, AVG VISC 22, AVG TEMP 73.6, AVG PH 10.06, MAX RATE 35.9  3 LB SAND BLENDER SCREWS WHERE NOT WORKING ON ATOMATIC WE WENT TO MANUAL AND TRIED TO LINE OUT 3 LB. FINISHED JOB IN MANUAL.  PSI WIRELINE SET PLUG AT 7170'  JOB WENT WELL WITH NOTHING FURTHER TO REPORT.								

**Well Name: KY BLUE D30-32**

VERTICAL - ORIGINAL HOLE, 12/21/2017 4:50:20 PM

## Stimulation Intervals

Start Date 4/25/2012	Primary Job Type COMPLETION - ORIGINAL	
Technical Result Success	Tech Result Details According to Plan	Tech Result Note

Comment  
(CODELL)-BREAK 2415 @ 1.9, ISIP 2828, 5 MIN 1980, POST JOB, ISIP 3509, 5 MIN 3400

AVG PRESS 3677, AVG RATE 25.2, AVG VISC 30, AVG TEMP 75.4, AVG PH 10.1, MAX PRESS 4055, MAX RATE 30.91.

LEAK OFF WAS 1000 PSI CALLED JASON AND WENT TO 25 BBLS MIN AND 30 VISC. HAD TO SHUT DOWN DURING PAD. EMPLOYEES OPENED VALVE AND LET WATER INTO THE HYDRO VISC DROPPED TO A 9 SHUT DOWN AND ROLLED HYDRO UNTIL WE GOT 29 A CONTINUED JOB DOWN FOR 45 MINUTES.

PSI WIRELINE PERFD.  
7048'-7062'  
PLUG @ 7170'

JOB WENT WELL WITH NOTHING FURTHER TO REPORT.

Start Date 4/25/2012	Primary Job Type COMPLETION - ORIGINAL	
Technical Result Success	Tech Result Details According to Plan	Tech Result Note

Comment  
(NIO)- BREAK 3865 @ 1.9 ISIP 3385, POST JOB ISIP 3563, 5 MIN 3480

AVG PRESS 4281, AVG RATE 50.16, AVG VISC 22.7, AVG TEMP 74.8, AVG PH 10.2, MAX PRESS 4669, MAX RATE 51.15.

PSI WIRELINE PERFD.  
6816'-6828'  
6918'-6930'

SET COMPOSITE FLOW THROUGH PLUG AT 7000' HALLIBURTON

JOB WENT ACCORDING TO DESIGN WITH NOTHING FURTHER TO REPORT.

