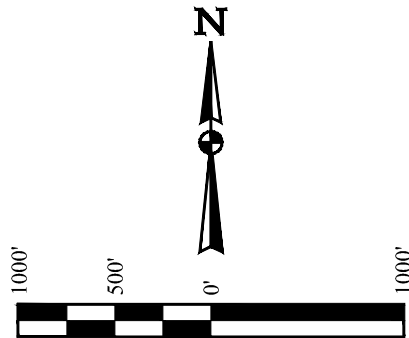


LEGEND:

- = 90° SYMBOL
● = PROPOSED WELLHEAD.
◆ = ENTRY TARGET.
□ = MID-LATERAL TARGET.
○ = TARGET BOTTOM HOLE.
▲ = SECTION CORNERS LOCATED. (NAD 83)
△ = SECTION CORNERS RE-ESTABLISHED. (Not Set on Ground.) (NAD 83)

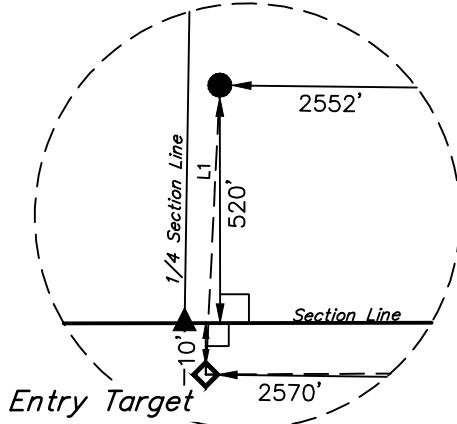
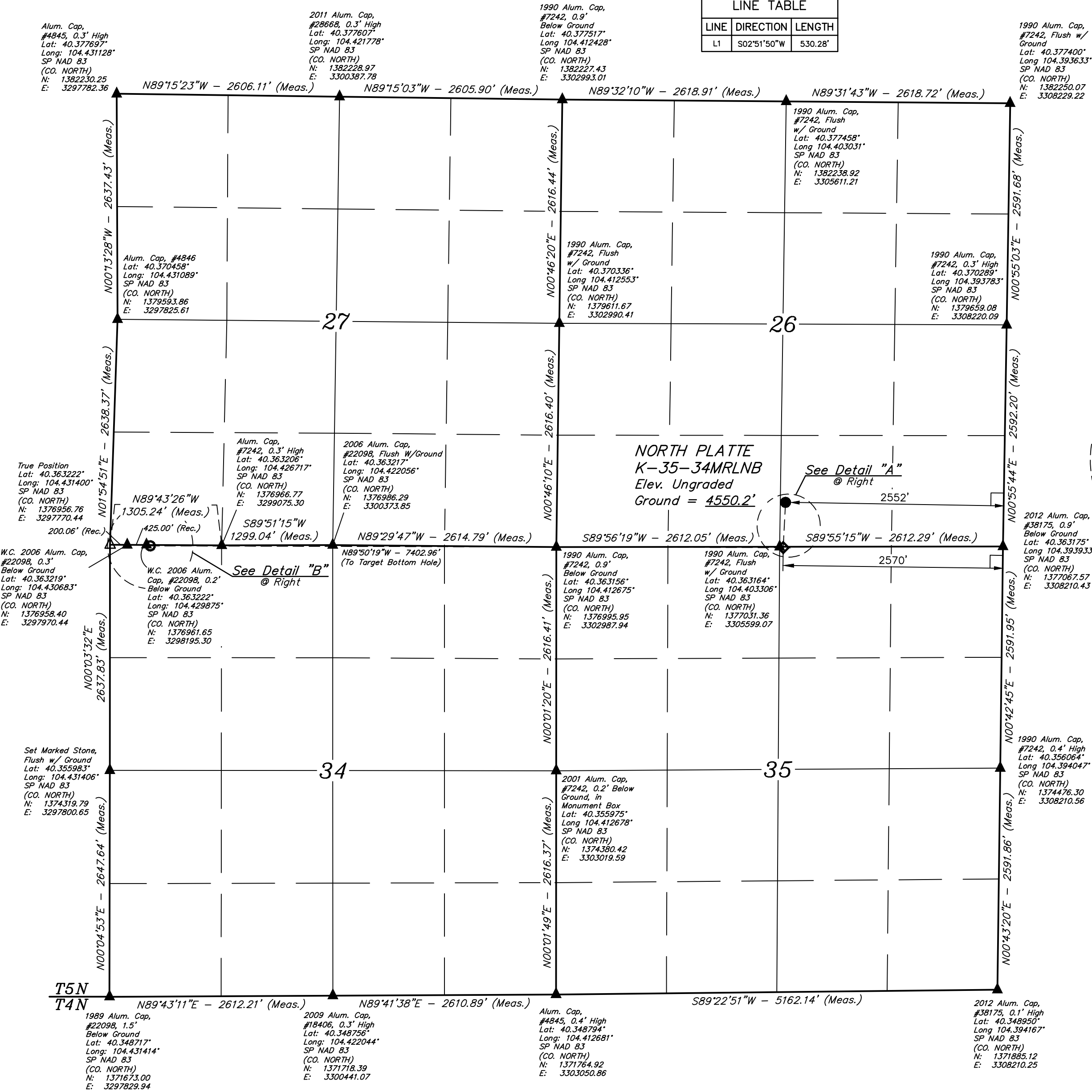
T5N, R63W, 6th P.M.



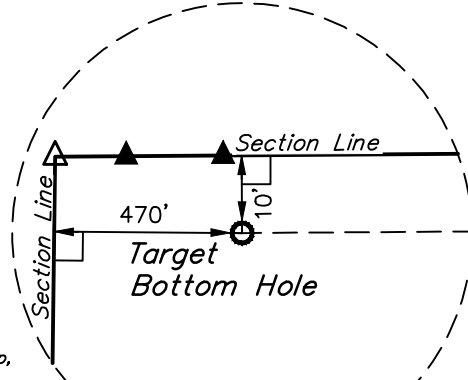
BASIS OF BEARINGS
BASIS OF BEARINGS IS A G.P.S. OBSERVATION

BASIS OF ELEVATION
USGS COOPERATIVE BASE NETWORK CONTROL STATION, DESIGNATION "M414".
NGS DATA SHEET LISTS THE NAVD 88 ELEVATION AS BEING 4600.58 FEET

LINE TABLE		
LINE	DIRECTION	LENGTH
L1	S02°51'50"W	530.28'



Detail "A"
No Scale



Detail "B"
No Scale

CERTIFICATE OF RECORD REGISTRATION
THIS IS TO CERTIFY THAT THE ABOVE IS A TRUE AND CORRECT COPY OF THE NOTES OF ACTUAL SURVEYS MADE BY ME OR UNDER MY SUPERVISION, AND THAT THE SAME ARE TRUE AND CORRECT TO THE BEST OF MY KNOWLEDGE AND BELIEF.

REGISTERED LAND SURVEYOR
RECORDING NO. 28283
STATE OF COLORADO
JULY 17, 2017

REV: 1 11-14-17 K.B. (NAME, ET, ML & TBH CHANGE)

BONANZA CREEK ENERGY
OPERATING COMPANY, LLC
NORTH PLATTE K-35-34MRLNB
SW 1/4 SE 1/4, SECTION 26, T5N, R63W, 6th P.M.
WELD COUNTY, COLORADO

UINTEAH
SURVEYING & MAPPING
DALLAS, TEXAS

UELS, LLC
Corporate Office * 85 South 200 East
Vernal, UT 84078 * (435) 789-1017

SURVEYED BY: DALLAS NIELSEN, C.M.
DRAWN BY: L.C.S.
SCALE: 10-17-16
12-13-16
1" = 1000'

WELL LOCATION PLAT

PDOP = 1.4

NAD 83 (SURFACE LOCATION)	NAD 83 (ENTRY TARGET)	NAD 83 (TARGET BOTTOM HOLE)
LATITUDE = 40°21'52.53" (40.364592)	LATITUDE = 40°21'47.30" (40.363138)	LATITUDE = 40°21'47.48" (40.363190)
LONGITUDE = 104°24'11.02" (104.403061)	LONGITUDE = 104°24'11.36" (104.403155)	LONGITUDE = 104°25'46.97" (104.429714)
STATE PLANE NAD 83 (CO. NORTH)	STATE PLANE NAD 83 (CO. NORTH)	STATE PLANE NAD 83 (CO. NORTH)
N: 1377551.71 E: 3305660.98	N: 1377021.94 E: 3305641.10	N: 1376950.37 E: 3298240.42