



410 17th Street, Suite 1400
Denver, CO 80202
(720) 440-6100 phone
(720) 305-0804 fax

Bonanzacrk.com

December 12, 2017

State of Colorado
Oil and Gas Conservation Commission
1120 Lincoln Street, Suite 801
Denver, CO 80203

RE: Proposed Wellbore Spacing Unit
North Platte K-35-34MRLNB
Niobrara New Drill
SWSE Section 26, Township 5N, Range 63W, 6th PM
Weld County, Colorado

Dear Director Lepore,

Bonanza Creek Energy Operating Company, LLC. ("Bonanza Creek") is planning to drill the above captioned well in accordance with the provisions of Colorado Oil and Gas Conservation Commission (COGCC) Rule 318A.e.

Bonanza Creek's proposed wellbore spacing unit consists of:

Township 5N, Range 63W (Weld County):
Section 26: S2SW, SWSE
Section 27: S2S2
Section 34: N2N2
Section 35: N2NW, NWNE

Total acres: 560ac

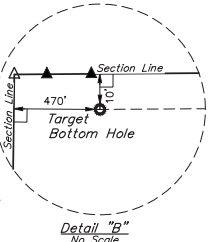
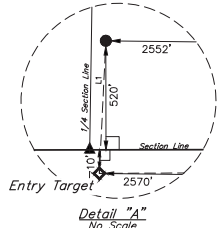
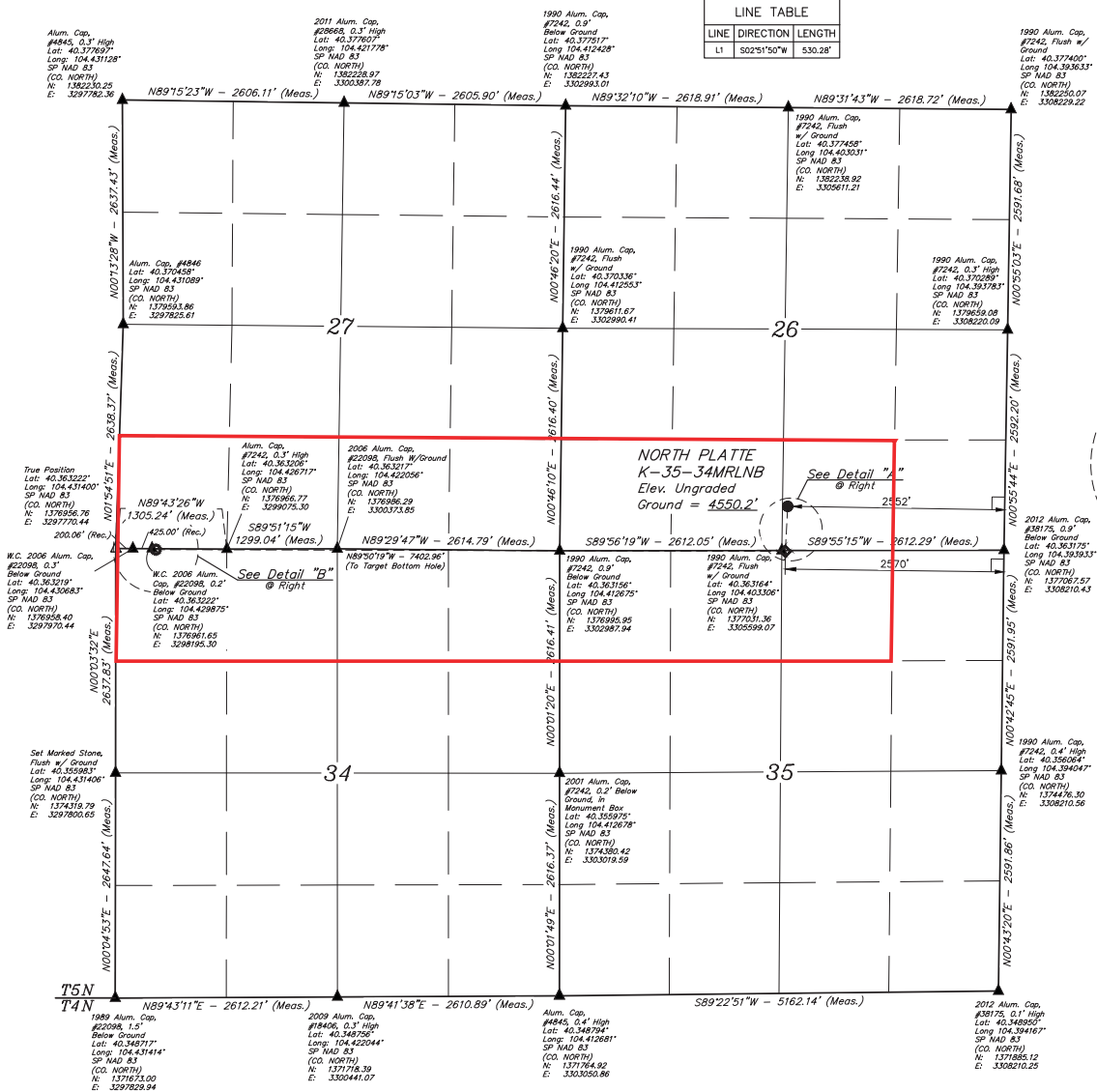
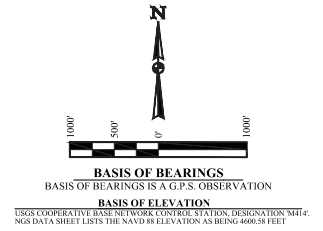
The 30 day notification time period has passed and we have not yet received any objections to such well locations or proposed spacing unit, therefore Bonanza Creek hereby requests the Director to approve the above mentioned well. Bonanza Creek respectfully requests the COGCC review the enclosed map illustrating the proposed wellbore spacing unit.

Regards,
Bonanza Creek Energy Operating Company, LLC.

Brian Dodek, P.G.
Manager – Environmental & Regulatory Compliance

- LEGEND:**
- 90° SYMBOL
 - PROPOSED WELLHEAD
 - ENTRY TARGET
 - MD-LATERAL TARGET
 - TARGET BOTTOM HOLE
 - SECTION CORNERS LOCATED (NAD 83)
 - SECTION CORNERS RE-ESTABLISHED (Not Set on Ground) (NAD 83)

T5N, R63W, 6th P.M.



CERTIFICATE OF RECORD REGISTRATION
THIS IS TO CERTIFY THAT THE ABOVE-NAMED SURVEYOR HAS REVIEWED THE NOTES OF ACTUAL SURVEYS MADE BY SAID SURVEYOR UNDER MY SUPERVISION AND THAT THE SAME ARE TRUE AND CORRECT TO THE BEST OF MY KNOWLEDGE AND BELIEF.

RECORDED LAND SURVEYOR
RECORDING NO. 28263
STATE OF COLORADO
JANUARY 17, 2017

REV: 1 11-14-17 K.B. (NAME, ET, ML & TBH CHANGE)
BONANZA CREEK ENERGY OPERATING COMPANY, LLC
NORTH PLATTE K-35-34MRLNB
SW 1/4 SE 1/4, SECTION 26, T5N, R63W, 6th P.M.
WELD COUNTY, COLORADO

UELS, LLC
Corporate Office • 85 South 200 East
Vernal, UT 84078 • (435) 789-1017

SURVEYED BY DALLAS NIELSEN, CM
DRAWN BY L.C.S.
SCALE 1" = 1000'

WELL LOCATION PLAT

PDOP = 1.4		
NAD 83 (SURFACE LOCATION)	NAD 83 (ENTRY TARGET)	NAD 83 (TARGET BOTTOM HOLE)
LATITUDE = 40°21'52.53" (40.364592)	LATITUDE = 40°21'47.30" (40.363138)	LATITUDE = 40°21'47.48" (40.363190)
LONGITUDE = 104°24'11.02" (104.403061)	LONGITUDE = 104°24'11.36" (104.403155)	LONGITUDE = 104°25'46.97" (104.429714)
STATE PLANE NAD 83 (CO. NORTH)	STATE PLANE NAD 83 (CO. NORTH)	STATE PLANE NAD 83 (CO. NORTH)
N: 1377551.71 E: 3305660.98	N: 1377021.94 E: 3305641.10	N: 1376950.37 E: 3298240.42