



SRC ENERGY

Operator: SRC Energy
Well Name: Buxman 28-15
Legal: NWNE, Section 28, Township 6N, Range 66W
Location: Weld County, CO
API: 05-123-26766

Deepest Water Well
Within 1 Mile = 58'





Wellbore History

Spud Date: 12/21/2008
Surf Csg: 8.625", 24# @ 423' – 175 sx
Prod Csg: 4.5", 11.6# @ 7256' – 1186 sx
TOC: 310' (CBL)
Perfs: NBRR: 6804'-7008'
CODL: 7110'-7128'

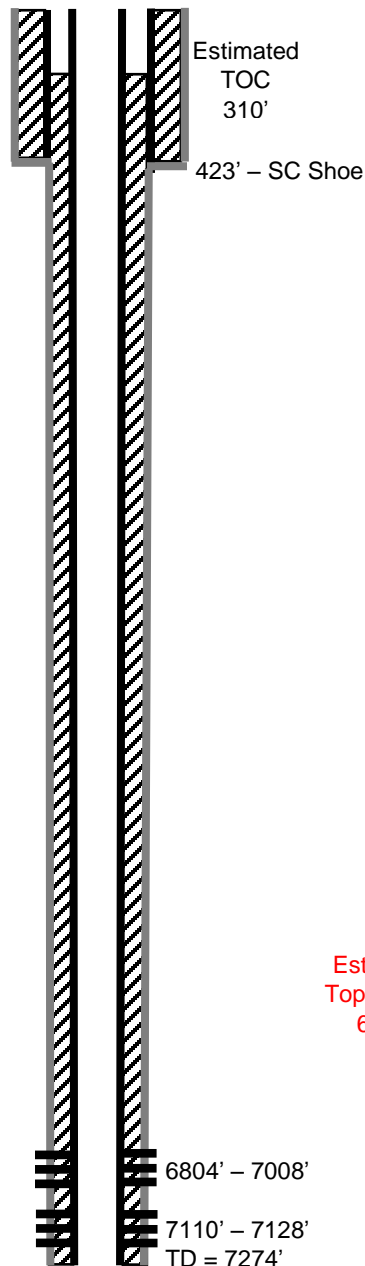
P&A Procedure

Set CIBP @ 6729'
Set 16 sx on top of CIBP (160' plug)
Set 29 sx @ 2500' (300' plug)
Cut casing @ 300'
Pmp 143 sx @ 573' to surface

Key

-  Existing Cement Coverage
-  CICR
-  Cement Pumped
-  CIBP

Current



Proposed

