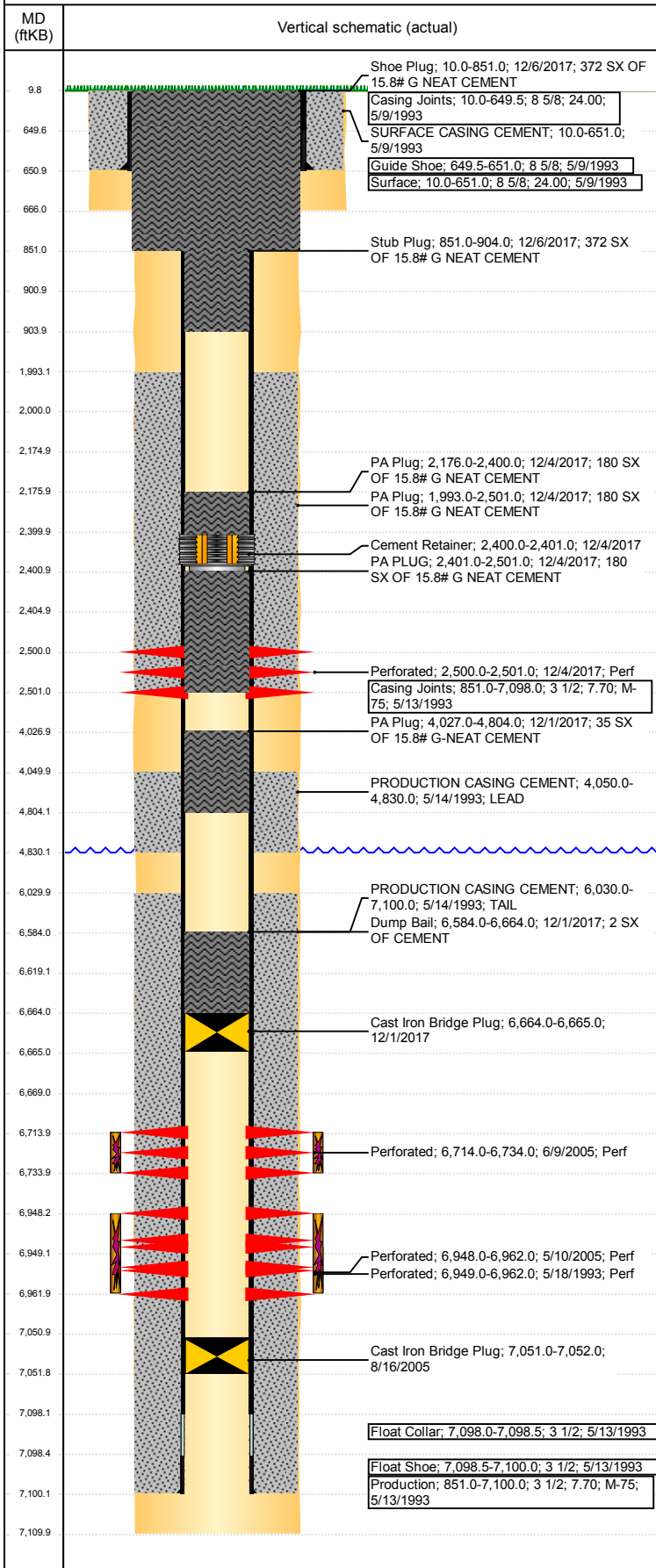


Well Name: PARKER BLUE D23-14

VERTICAL - ORIGINAL HOLE, 12/29/2017 3:30:26 PM



Well Header

API 05-123-17004	Business Unit DJ BASIN	District 15	Well Config VERTICAL
Original KB Elevation (ft) 4,838	KB - GL / MSL (ftKB) 10.00	Spud Date 5/8/1993	P & A Date 12/6/2017

Comment
DISCREPANCIES: STATE REPORT TD 7120', LOGGER DEPTH 7110'. PROD CSG SET DEPTH: STATE REPORT 7116', DRILL REPORT 7100', USED 7100'. DRILL OUT CIBP PUSH TO 7051'. FAIR BOND FROM 4700-4830'. STATE SHOWS SI MARCH 2017. FIELD OPERATIONS NOTICE - FLOWLINES ABANDONED PER RULE 1103, RCVD 6/28/17.

Directions To Well
CR 34 AND 53 EAST THROUGH GATE (COMBO #6969) .1 SOUTH 2.25 MILES TO WINDMILL EAST 2.6 MILES TO WINDMILL NORTH .25 EAST .2 INTO LOCATION

Congressional Location

Quarter 3 SE	Quarter 4 SW	Section 23	Township 3	TwNS Dir N	Range 64	Range E/W Dir W
-----------------	-----------------	---------------	---------------	---------------	-------------	--------------------

Bottom Hole Location

North-South Distance (ft)	From N or S Line	East-West Distance (ft)	From E or W Line
---------------------------	------------------	-------------------------	------------------

Plug Back Total Depths

Date	Depth (ftKB)	Method	Com
5/14/1993	7,100.0	CASING TALLY	TOP OF FLOAT COLLAR
5/17/1993	7,100.0	CASED HOLE LOG	DEPTH LOGGER ON CBL
8/16/2005	7,051.0	TAG	PUSH CIBP TO 7051' ROLL HOLE CLEAN

Wellbore Sections

Section Des	Size (in)	Act Top, MD (ftKB)	Act Btm, MD (ftKB)
SURFACE	12 1/4	10	666
PRODUCTION	7 7/8	666	7,110

Zone Statuses

Zone Name	Status Date	Status	Fluid Type	Job	Prod Method
NIOBRARA	6/23/2005	PR		REFRAC & RE...	Flowing
NIOBRARA	8/22/2005	PR		COMMINGLE...	Flowing
NIOBRARA	12/6/2017	P&A		PLUG AND AB...	
CODELL	6/7/1993	PR		DRILLING/CO...	Flowing
CODELL	6/8/2005	TA		REFRAC & RE...	
CODELL	8/22/2005	PR		COMMINGLE...	Flowing
CODELL	12/6/2017	P&A		PLUG AND AB...	

Casing Strings

Surface, 651.0ftKB

Casing Description	Run Date	OD (in)	Wt/Len (l...)	Grade	Top, MD (ft...)	MD (ftKB)
Surface	5/9/1993	8 5/8	24.00		10.0	651.0

Production, 7,100.0ftKB

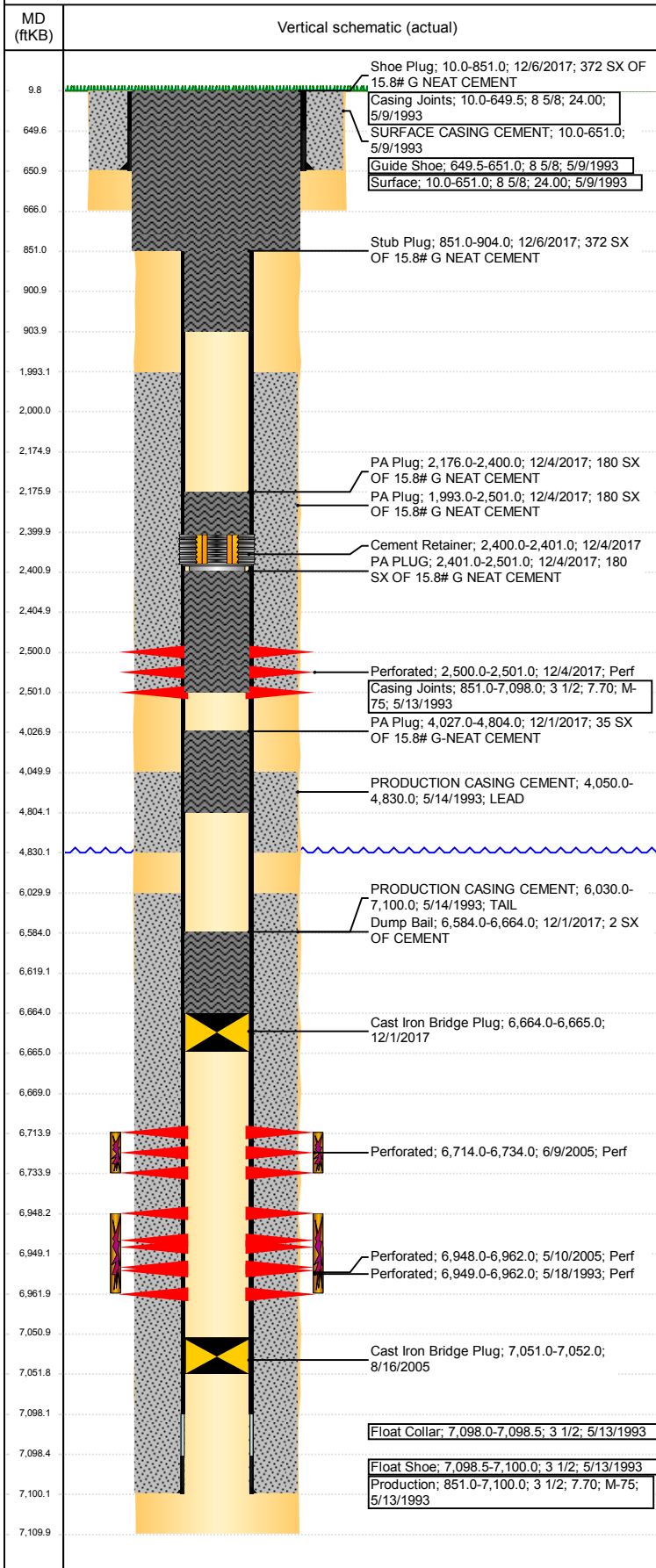
Casing Description	Run Date	OD (in)	Wt/Len (l...)	Grade	Top, MD (ft...)	MD (ftKB)
Production	5/13/1993	3 1/2	7.70	M-75	10.0	7,100.0

Cement

Description	Top Depth (ftKB)	Bottom Depth (ftKB)
SURFACE CASING CEMENT	10.0	651.0
PRODUCTION CASING CEMENT	4,050.0	4,830.0
PRODUCTION CASING CEMENT	6,030.0	7,100.0
Dump Bail	6,619.0	6,664.0
Balance Plug	4,050.0	4,830.0
Courtesy Plug	2,000.0	2,500.0
Courtesy Plug	2,175.0	2,400.0
Courtesy Plug	2,405.0	2,500.0
Shoe Plug	851.0	901.0
Shoe Plug	10.0	851.0
Dump Bail	6,584.0	6,664.0
PA Plug	4,027.0	4,804.0
PA Plug	2,176.0	2,400.0

Well Name: PARKER BLUE D23-14

VERTICAL - ORIGINAL HOLE, 12/29/2017 3:30:26 PM



Cement							
Description	PA PLUG	Top Depth (ftKB)			Bottom Depth (ftKB)		
		2,401.0			2,501.0		
Description	PA Plug	Top Depth (ftKB)			Bottom Depth (ftKB)		
		1,993.0			2,501.0		
Description	Stub Plug	Top Depth (ftKB)			Bottom Depth (ftKB)		
		851.0			904.0		
Description	Shoe Plug	Top Depth (ftKB)			Bottom Depth (ftKB)		
		10.0			851.0		
Tubing Strings							
Tubing Description	Run Date	String...	ID (in)	Wt (lb/ft)	Grade	Len (ft)	Set De...
Tubing - Production	8/16/2005	2 1/16	1.75	3.25	J-55	6,917.00	
Tubing Components							
Item Des	OD (in)	Wt (lb/ft)	Grade	Jts	Len (ft)	Btm (ftKB)	Btm (TVD) (ftKB)
Tubing	2 1/16	3.25	J-55	222	6,916.00	6,926.0	
Notched Seating Nipple	2 1/16			1	1.00	6,927.0	
Other In Hole							
Run Date	Des				OD (in)	Top (ftKB)	Btm (ftKB)
8/16/2005	Cast Iron Bridge Plug				2.99	7,051.0	7,052.0
9/13/2017	Cast Iron Bridge Plug				3.068	6,664.0	6,669.0
9/13/2017	Cement Retainer				3.068	2,400.0	2,405.0
12/1/2017	Cast Iron Bridge Plug				3.068	6,664.0	6,665.0
12/4/2017	Cement Retainer				3.068	2,400.0	2,401.0
Logs							
Date	Type				Top, MD (ftKB)	Btm, MD (ftKB)	
5/13/1993	COMPENSATED DENSITY				3,850.0	7,130.0	
5/13/1993	INDUCTION				3,850.0	7,130.0	
5/17/1993	CEMENT BOND				3,850.0	7,100.0	
11/30/2017	GYRO				12.0	7,100.0	
Perforation Data							
Linked Zone	Bnch/St g	Sum of Entered Shot Total	Top (ftKB)		Btm (ftKB)		Date
CODELL, ORIGINAL HOLE NIOBRARA, ORIGINAL HOLE CODELL, ORIGINAL HOLE CODELL, ORIGINAL HOLE		0	2,500.00		2,500.00		9/13/2017
		6	2,500.00		2,501.00		12/4/2017
		120	6,714.00		6,734.00		6/9/2005
		56	6,948.00		6,962.00		5/10/2005
		53	6,949.00		6,962.00		5/18/1993
Total (Sum)		235					
Stimulation Intervals							
Start Date	Primary Job Type						
5/18/1993	DRILLING/COMPLETION - ORIGINAL						
Technical Result		Tech Result Details			Tech Result Note		
Comment							
CODELL FRAC							
Start Date	Primary Job Type						
6/3/2005	REFRAC & RECOMPLETE						
Technical Result		Tech Result Details			Tech Result Note		
Comment							
CODELL REFRAC							
Start Date	Primary Job Type						
6/22/2005	REFRAC & RECOMPLETE						
Technical Result		Tech Result Details			Tech Result Note		
Comment							
NIOBRARA FRAC							