

BMC A
Looking North



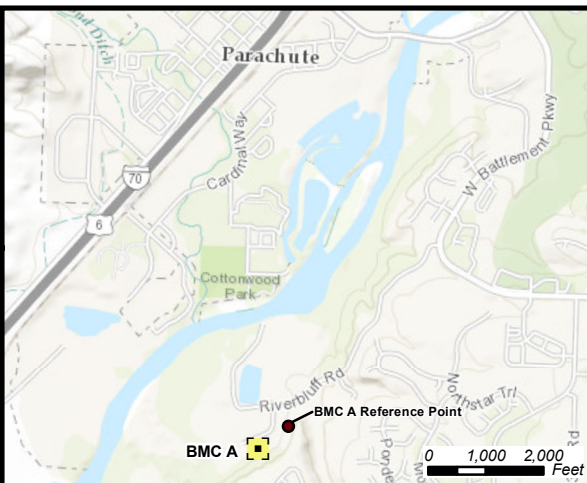
BMC A
Looking East



BMC A
Looking West



BMC A
Looking South



NOTES / COMMENTS:

Color Photographs show the Proposed BMC A pad in the four cardinal directions as noted.

DISCLAIMER: This representation and the Geographic Information System (GIS) used to create it are designed as a source of reference and not intended to replace official records and/or legal surveys. HCSL assumes no responsibility for any risks, dangers, or liabilities that may result from its use and makes no guarantee as to the quality or accuracy of the underlying data.



Ursa | OPERATING COMPANY

Form 2A - Attachment G

Reference Area Pictures

BMC A

39.433489 -108.049693
Section 18, Township 7 South, Range 95 West
Section 13, Township 7 South, Range 96 West



HRL COMPLIANCE SOLUTIONS, INC.
Environmental Consultants

Author: E. Fought
Revision: 0
Date: 6/12/2017