



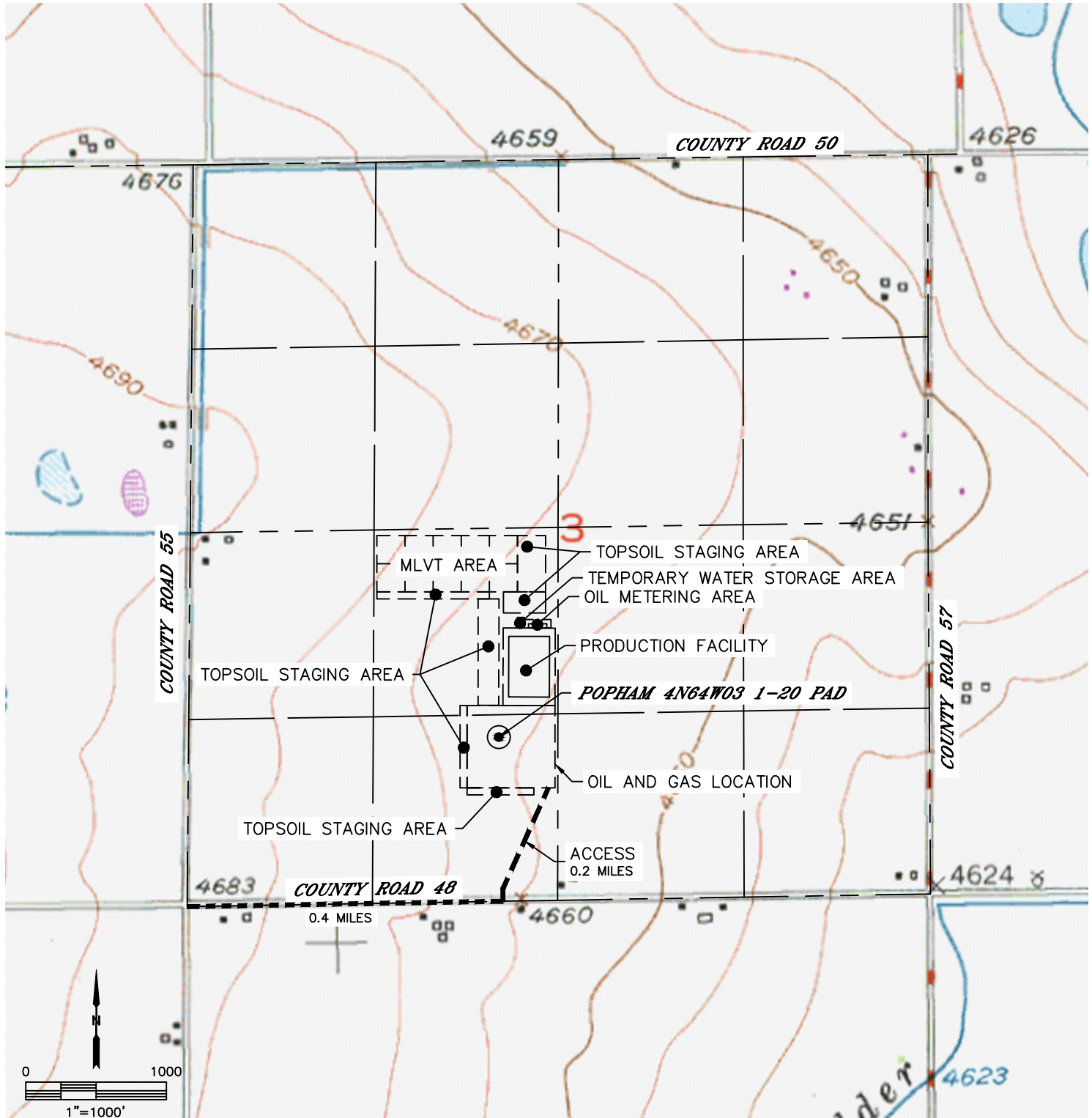
Lat40°, Inc. 6250 W. 10th Street, Unit 2, Greeley, CO 970-515-5294

# ACCESS ROAD MAP

POPHAM 4N64W03 1-20 PAD

SECTION: 3  
TOWNSHIP: 4N  
RANGE: 64W  
6TH. P.M.  
WELD COUNTY, CO

DRIVING DIRECTIONS TO POPHAM 4N64W03 1-20 PAD  
FROM THE INTERSECTION OF COUNTY ROAD 55 AND COUNTY ROAD 48, GO EAST ON COUNTY ROAD 48 FOR 0.4 MILES TO A PROPOSED ACCESS TO THE NORTH. THENCE NORTH, NORTHEAST FOR 0.2 MILES TO THE PROPOSED DRILL PAD AND PRODUCTION FACILITY.





Lat40°, Inc. 6250 W. 10th Street, Unit 2, Greeley, CO 970-515-5294

# ACCESS ROAD MAP

POPHAM 4N64W03 1-20 PAD

SECTION: 3  
TOWNSHIP: 4N  
RANGE: 64W  
6TH. P.M.  
WELD COUNTY, CO

