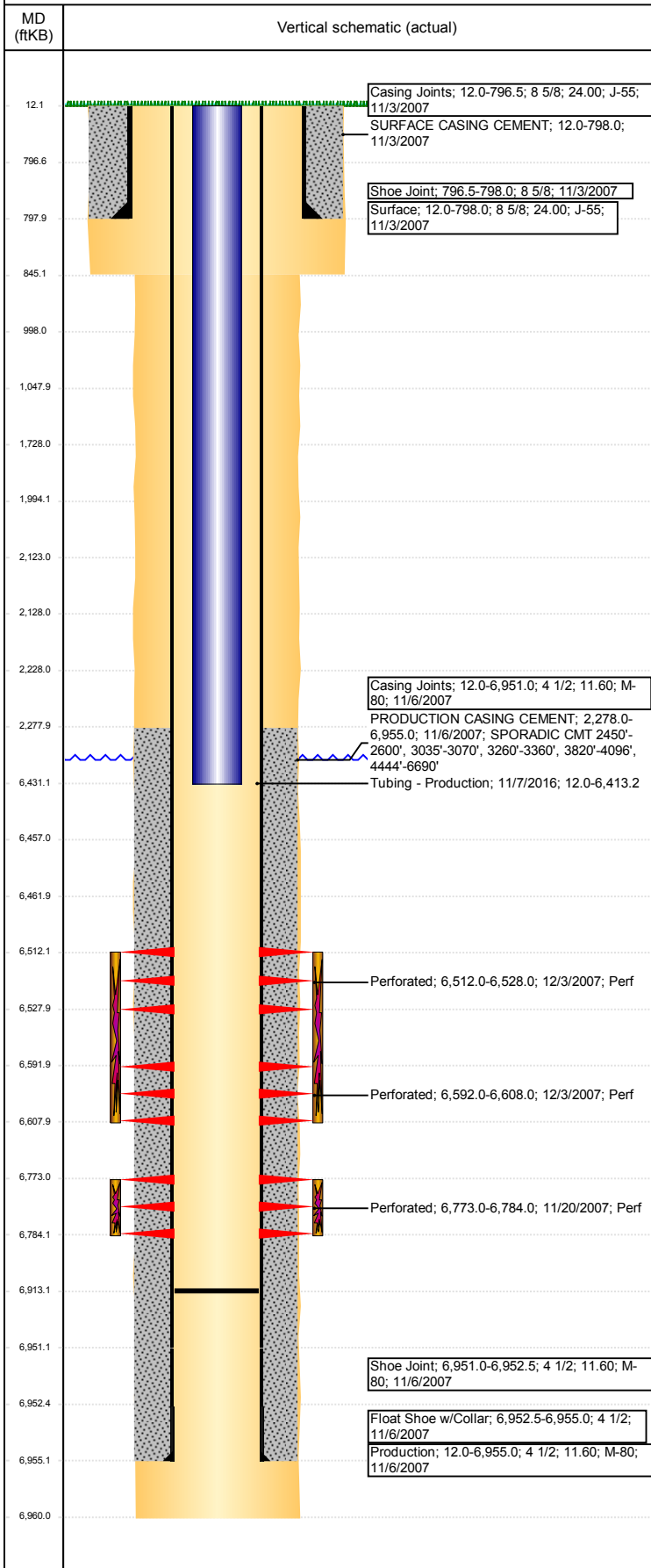


# Wellbore Schematic Input Report

**Well Name: WELLS RANCH USX AA19-16**

VERTICAL - ORIGINAL HOLE, 12/20/2017 4:06:18 PM



## Well Header

API 05-123-26435	Business Unit DJ BASIN	District 15	Well Config VERTICAL
Original KB Elevation (ft) 4,666	KB - GL / MSL (ftKB) 12.00	Spud Date 11/2/2007	P & A Date

## Comment

DISCREPANCY W/TD REPORTING: PATTERSON DAILY DRLG @6932'/NOBLE DAILY DRLG @6960'

## Directions To Well

WCR 61.5 & 66, EAST 0.3, NORTH 0.1 INTO

## Congressional Location

Quarter 3 SE	Quarter 4 SE	Section 19	Township 6	Twntshp N/S Dir N	Range 63	Range E/W Dir W
-----------------	-----------------	---------------	---------------	----------------------	-------------	--------------------

## Bottom Hole Location

North-South Distance (ft)	From N or S Line	East-West Distance (ft)	From E or W Line
---------------------------	------------------	-------------------------	------------------

## Plug Back Total Depths

Date	Depth (ftKB)	Method	Com
11/6/2007	6,936.8	CASING TALLY	FLOAT SHOE W/COLLAR
11/19/2007	6,923.0	CASED HOLE LOG	DEPTH LOGGER ON CBL
2/26/2008	6,913.0	TAG	C/O TO 6913'

## Wellbore Sections

Section Des	Size (in)	Act Top, MD (ftKB)	Act Btm, MD (ftKB)
SURFACE	12 1/4	12	845
PRODUCTION	7 7/8	845	6,960

## Zone Statuses

Zone Name	Status Date	Status	Fluid Type	Job	Prod Method
CODELL	12/5/2007	PR		DRILLING/CO...	
NIOBRARA	12/5/2007	PR		DRILLING/CO...	

## Casing Strings

### Surface, 798.0ftKB

Casing Description	Run Date	OD (in)	Wt/Len (l...)	Grade	Top, MD (ft...)	MD (ftKB)
Surface	11/3/2007	8 5/8	24.00	J-55	12.0	798.0

### Production, 6,955.0ftKB

Casing Description	Run Date	OD (in)	Wt/Len (l...)	Grade	Top, MD (ft...)	MD (ftKB)
Production	11/6/2007	4 1/2	11.60	M-80	12.0	6,955.0

## Cement

Description	Top Depth (ftKB)	Bottom Depth (ftKB)
SURFACE CASING CEMENT	12.0	798.0
PRODUCTION CASING CEMENT	2,278.0	6,955.0
Dump Bail	6,431.0	6,457.0
Cement Squeeze	1,728.0	2,228.0
Cement Squeeze	1,994.0	2,123.0
Cement Squeeze	2,128.0	2,228.0
Cement Squeeze	12.0	998.0
Cement Squeeze	998.0	1,048.0

## Tubing Strings

Tubing Description	Run Date	String...	ID (in)	Wt (lb/ft)	Grade	Len (ft)	Set De...
Tubing	2/27/2008	2 3/8		4.70	J-55	6,749.00	

## Tubing Components

Item Des	OD (in)	Wt (lb/ft)	Grade	Jts	Len (ft)	Btm (ftKB)	Btm (TVD) (ftKB)
EUE 8rd Tubing	2 3/8	4.70	J-55	217	6,747.60	6,759.6	
Notched collar	2 3/8				1.40	6,761.0	

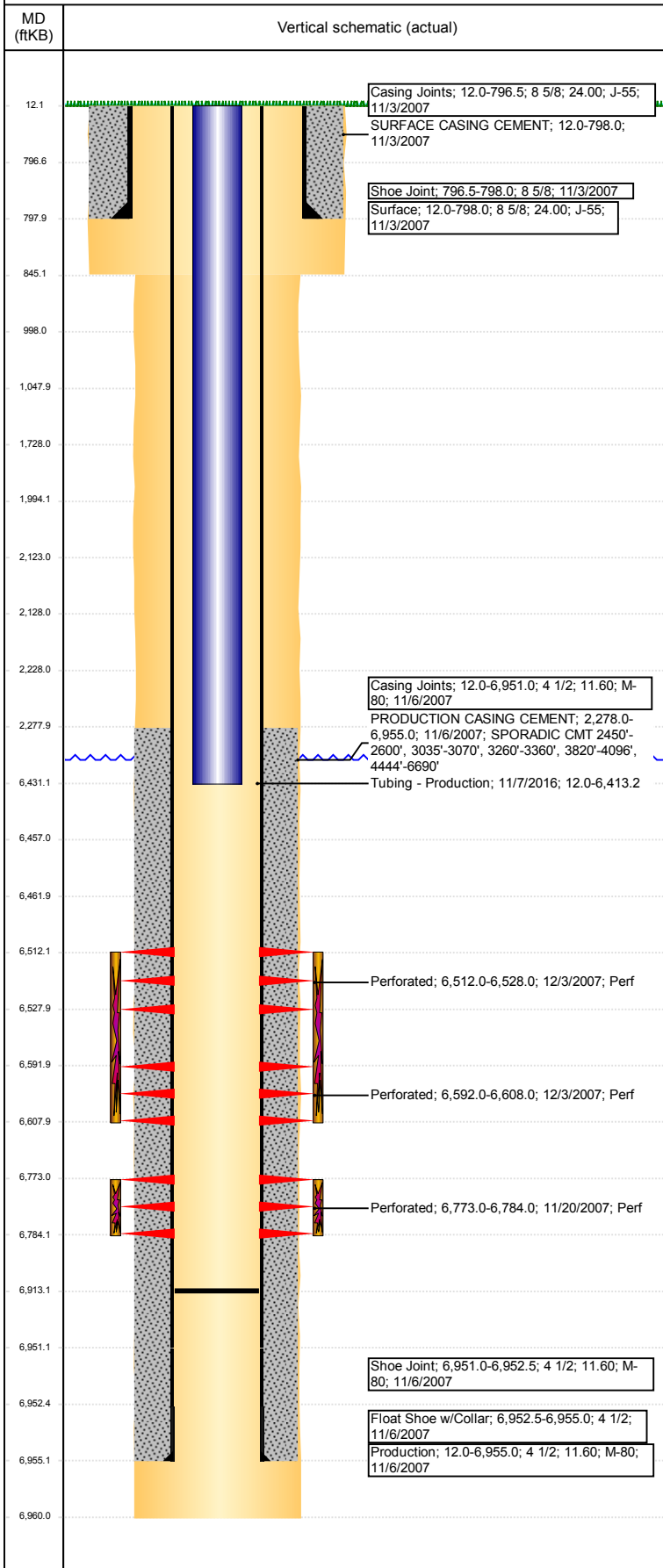
Tubing Description	Run Date	String...	ID (in)	Wt (lb/ft)	Grade	Len (ft)	Set De...
Tubing - Production	11/7/2016	2 3/8	2.00	4.70	J-55	6,401.21	

## Tubing Components

Item Des	OD (in)	Wt (lb/ft)	Grade	Jts	Len (ft)	Btm (ftKB)	Btm (TVD) (ftKB)
Tubing Pup Joint	2 3/8	4.70	J-55	1	8.00	20.0	
EUE 8rd Tubing	2 3/8	4.70	J-55	205	6,381.34	6,401.3	
XN Profile Nipple	2 3/8			1	1.22	6,402.6	
Tubing Pup Joint	2 3/8	4.70	J-55	1	4.00	6,406.6	

**Well Name: WELLS RANCH USX AA19-16**

VERTICAL - ORIGINAL HOLE, 12/20/2017 4:06:19 PM



Tubing Components							
Item Des	OD (in)	Wt (lb/ft)	Grade	Jts	Len (ft)	Btm (ftKB)	Btm (TVD) (ftKB)
RMOR HD PACKER.	3.99			1	6.65	6,413.2	
Other In Hole							
Run Date	Des				OD (in)	Top (ftKB)	Btm (ftKB)
12/19/2017	Cement Retainer				3.99	2,123.0	2,128.0
12/19/2017	Cast Iron Bridge Plug				3.99	6,457.0	6,462.0
Logs							
Date	Type				Top, MD (ftKB)	Btm, MD (ftKB)	
11/6/2007	COMPENSATED DENSITY				2,600.0	6,940.0	
11/6/2007	INDUCTION				12.0	6,960.0	
11/19/2007	CBL/CCL/GR				2,150.0	6,916.0	
10/2/2015	GYRO				10.0	6,650.0	
Perforation Data							
Linked Zone	Bnch/St g	Sum of Entered Shot Total	Top (ftKB)	Btm (ftKB)	Date		
		0	2,228.00	2,228.00	12/19/2017		
NIOBRARA, ORIGINAL HOLE	A	64	6,512.00	6,528.00	12/3/2007		
NIOBRARA, ORIGINAL HOLE	B	64	6,592.00	6,608.00	12/3/2007		
CODELL, ORIGINAL HOLE		44	6,773.00	6,784.00	11/20/2007		
Total (Sum)		172					
Stimulation Intervals							
Start Date		Primary Job Type					
12/3/2007		DRILLING/COMPLETION - ORIGINAL					
Technical Result		Tech Result Details			Tech Result Note		
Comment							
Start Date		Primary Job Type					
12/3/2007		DRILLING/COMPLETION - ORIGINAL					
Technical Result		Tech Result Details			Tech Result Note		
Comment							